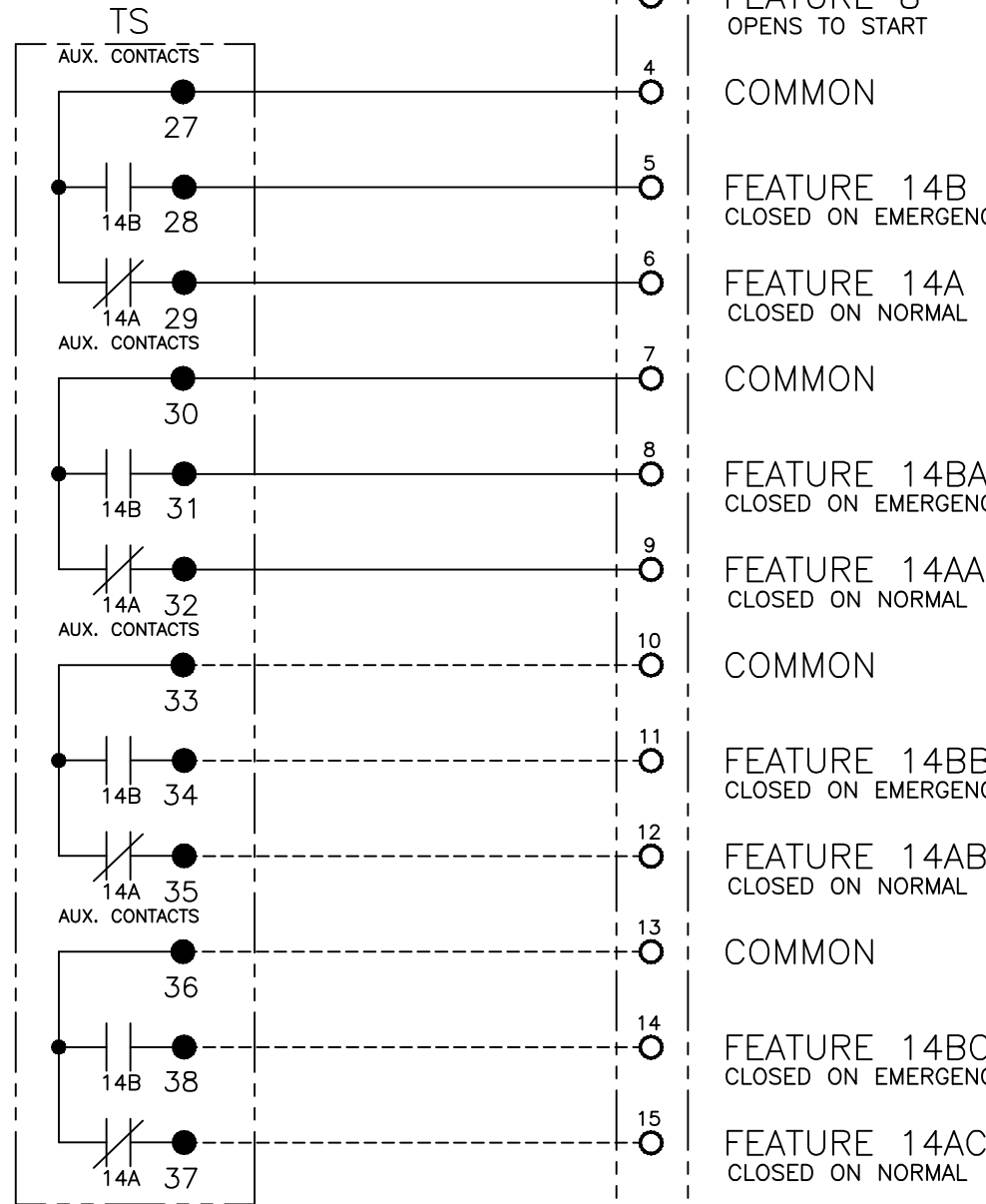


(FIELD CONNECTIONS), WIRE RANGE:
50mm² [#22 AWG] - 3,1mm² [#12 AWG]

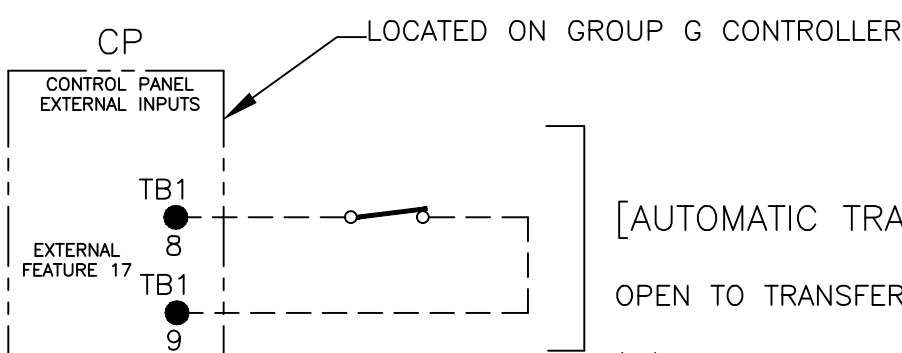
ENGINE STARTING SIGNALS
RATING: 5 AMPS, 30 VDC,
250 VAC (IEC/CE 60947-6-1)



TS AUXILIARY CONTACTS
FEATURE 14AA & 14BA
RATING: 10 AMPS, 32 VDC,
250 VAC (IEC/CE 60947-6-1)
GENERAL PURPOSE

OPTIONAL TS AUXILIARY CONTACTS ACCESSORY
14AC & 14BC
RATING: 10 AMPS, 32 VDC,
250 VAC (IEC/CE 60947-6-1)
GENERAL PURPOSE

CONTROLLER REMOTE CONTROL FEATURES



EXTERNAL FEATURE 17
REMOTE TRANSFER TO EMERGENCY
[AUTOMATIC TRANSFER SWITCHING DEVICE TYPE ONLY]

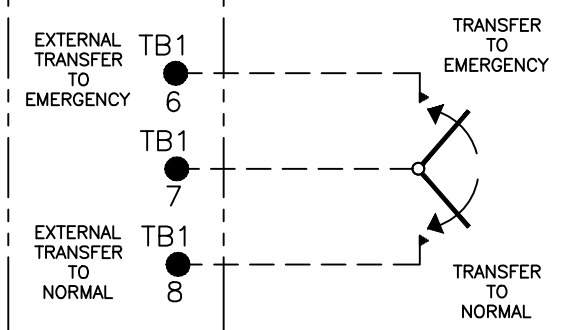
OPEN TO TRANSFER TO EMERGENCY

(N/C CONTACT, 5VDC LOW ENERGY RATING)

REFER TO USER'S GUIDE PN 381333-401
FOR SETTING INFORMATION.

EXTERNAL FEATURE 6B
REMOTE BYPASS OF RETRANSFER
TO NORMAL TIME DELAY
OPEN TO BYPASS TIME DELAY
(MOMENTARY N/C CONTACT,
5VDC LOW ENERGY RATING)

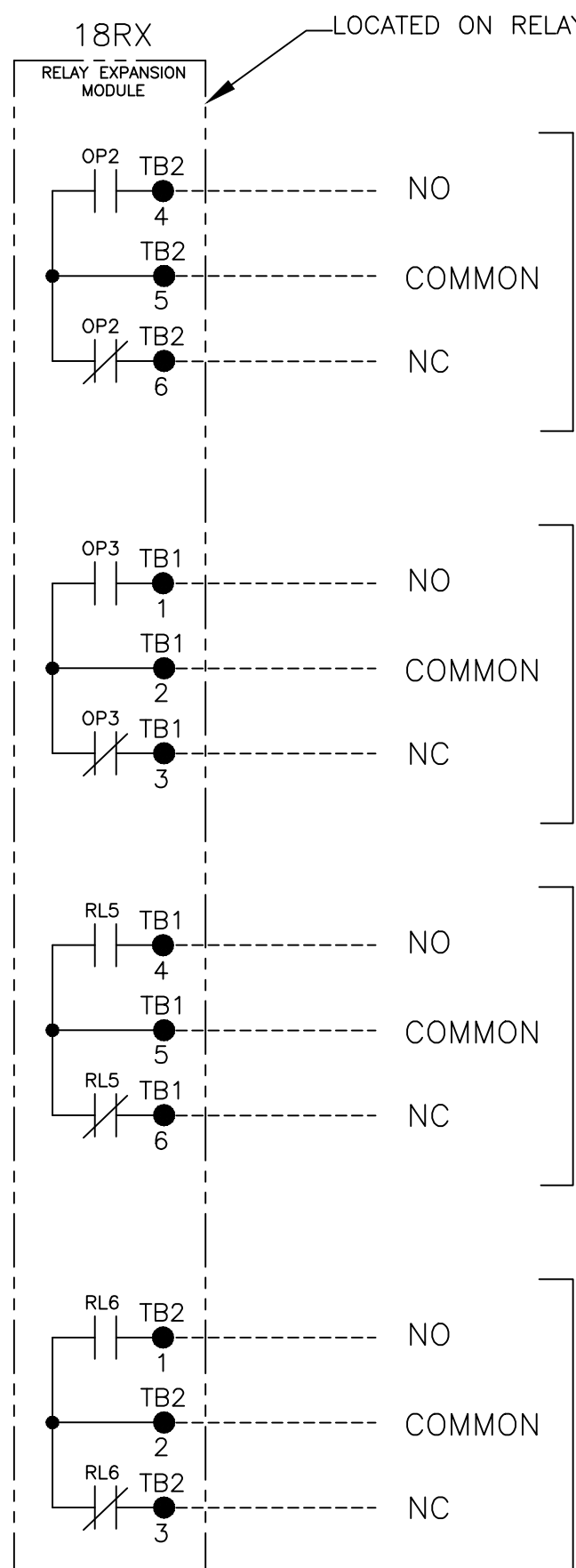
REFER TO USER'S GUIDE PN 381333-401
FOR SETTING INFORMATION.



EXTERNAL MANUAL TRANSFER
REMOTE TRANSFER TO
NORMAL OR EMERGENCY
[NON-AUTOMATIC TRANSFER SWITCHING DEVICE TYPE ONLY]

(MOMENTARY SPDT, CENTER-OFF CONTACTS,
5VDC LOW ENERGY RATING)

OPTIONAL ACCESSORY 18RX (RELAY EXPANSION MODULE)



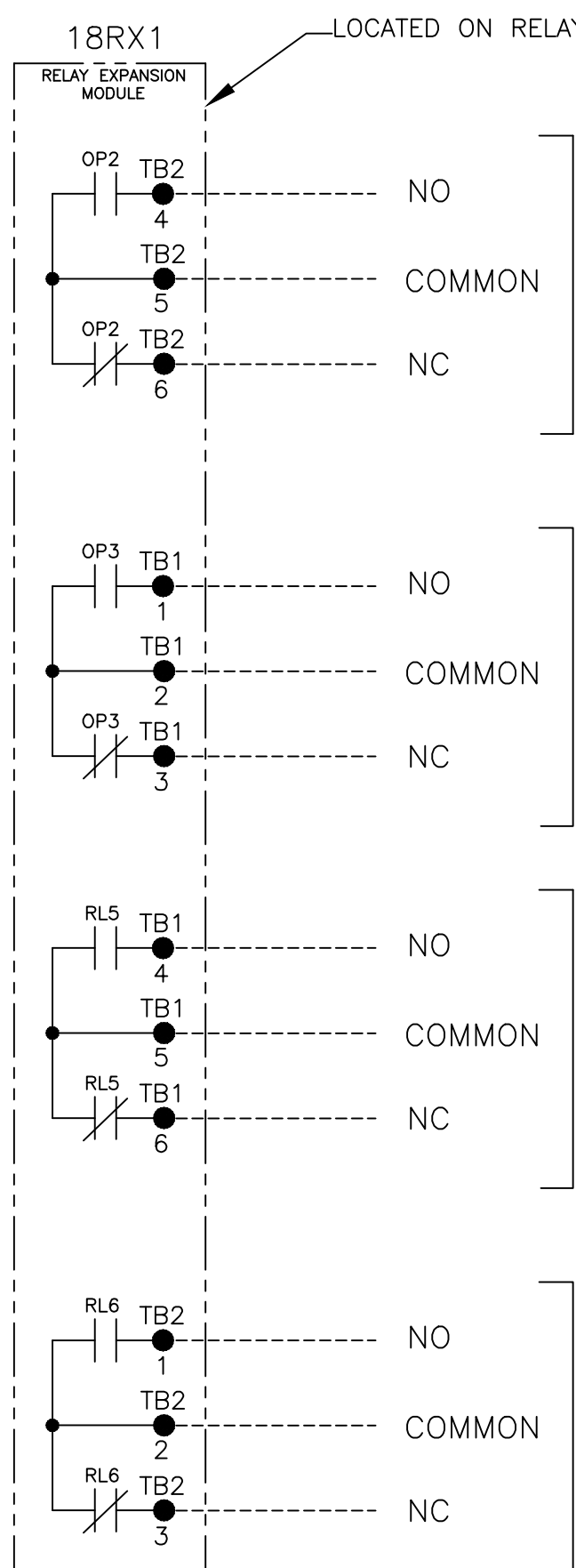
OPTION RELAY "OP2"
AS
OUTPUT RELAY
SET JUMPERS
J1: 1-2 & 3-4
(5 AMPS, 30 VDC MAX.)
(100 mA, 5 VDC MIN.)
(IEC/CE 60947-6-1)
REFER TO USER'S GUIDE
PN 381333-401
FOR SETTING INFORMATION.

OPTION RELAY "OP3"
(5 AMPS, 30 VDC MAX.)
(100 mA, 5 VDC MIN.)
(IEC/CE 60947-6-1)
REFER TO USER'S GUIDE
PN 381333-401
FOR SETTING INFORMATION.

EMERGENCY SOURCE
ACCEPTABLE
SIGNAL
(5 AMPS, 30 VDC MAX.)
(100 mA, 5 VDC MIN.)
(IEC/CE 60947-6-1)

NORMAL SOURCE
ACCEPTABLE
SIGNAL
(5 AMPS, 30 VDC MAX.)
(100 mA, 5 VDC MIN.)
(IEC/CE 60947-6-1)

OPTIONAL ACCESSORY 18RX1 (SECOND RELAY EXPANSION MODULE)



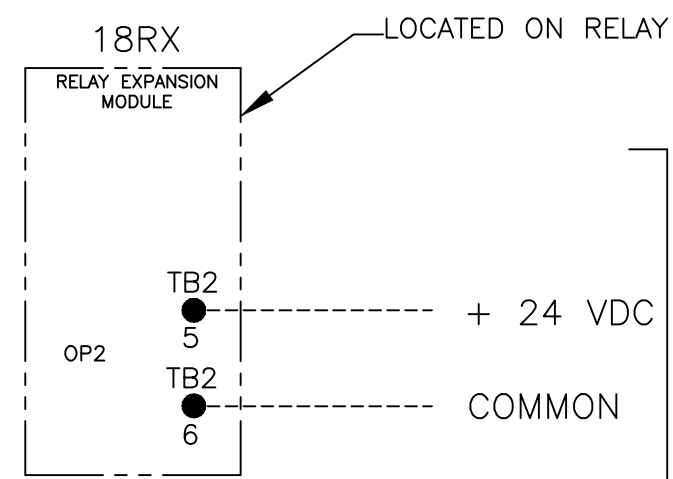
OPTION RELAY "OP2"
SET JUMPERS
J1: 1-2 & 3-4
(5 AMPS, 30 VDC MAX.)
(100 mA, 5 VDC MIN.)
(IEC/CE 60947-6-1)
REFER TO USER'S GUIDE
PN 381333-401
FOR SETTING INFORMATION.

OPTION RELAY "OP3"
(5 AMPS, 30 VDC MAX.)
(100 mA, 5 VDC MIN.)
(IEC/CE 60947-6-1)
REFER TO USER'S GUIDE
PN 381333-401
FOR SETTING INFORMATION.

EMERGENCY SOURCE
ACCEPTABLE
SIGNAL
(5 AMPS, 30 VDC MAX.)
(100 mA, 5 VDC MIN.)
(IEC/CE 60947-6-1)

NORMAL SOURCE
ACCEPTABLE
SIGNAL
(5 AMPS, 30 VDC MAX.)
(100 mA, 5 VDC MIN.)
(IEC/CE 60947-6-1)

"OP2"
OPTIONAL
USES

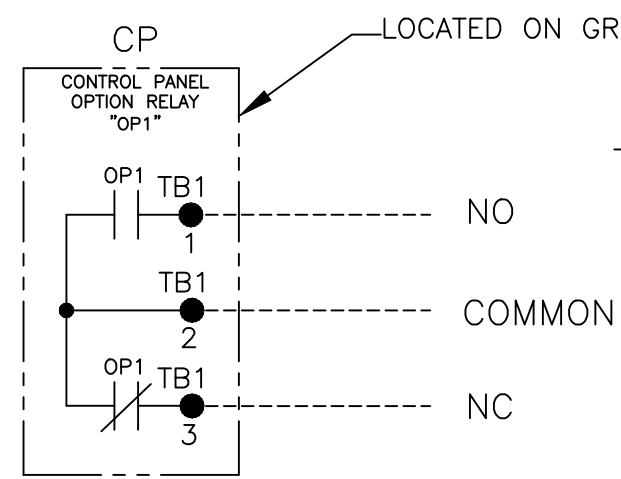


OPTION RELAY "OP2"
AS
EXTERNAL POWER
SUPPLY INPUT
"1G"

SET JUMPERS AS FOLLOWS:
REMOVE JUMPERS "J1" 1-2 & "J1" 3-4
CONNECT JUMPERS "J1" 5-7 & "J1" 6-8
(24 VDC NOM., 15 W MAX.)
INPUT RANGE: 21.6 VDC MIN
27.6 VDC MAX.

REFER TO USER'S GUIDE PN 381333-401
FOR SETTING INFORMATION.

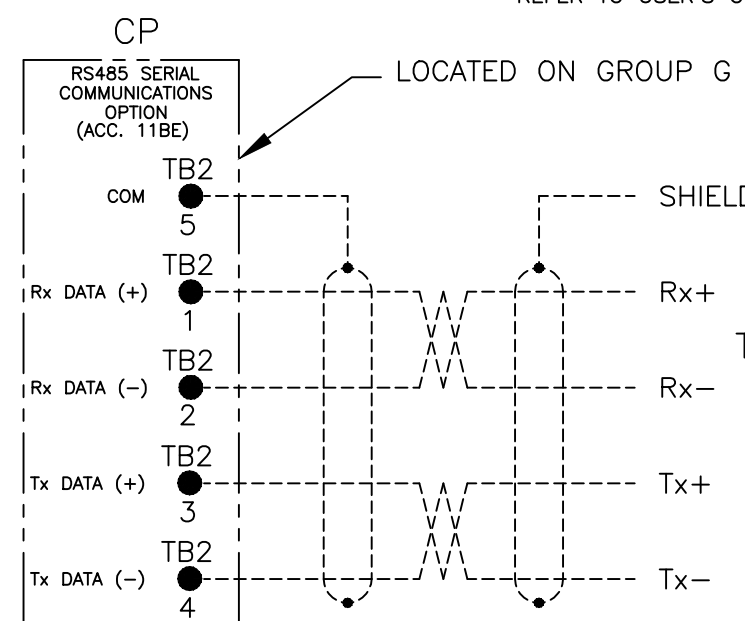
CONTROLLER OPTION RELAY "OP1" (STANDARD)



OPTION RELAY "OP1"

(5 AMPS, 30 VDC MAX.)
(100 mA, 5 VDC MIN.)
(IEC/CE 60947-6-1)
REFER TO USER'S GUIDE
PN 381333-401
FOR SETTING INFORMATION.

RS485 SERIAL COMMUNICATIONS OPTION
AVAILABLE WITH OPTIONAL ACCESSORY 11BE: ADVANCED-FUNCTION SOFTWARE BUNDLE
REFER TO USER'S GUIDE PN 381333-400 FOR SETTING INFORMATION.

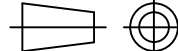
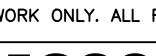


TO OTHER ASCO SERIAL
COMMUNICATIONS
DEVICES

NOTES:
1. EARTH GROUND SHIELD AT HOST DEVICE ONLY.
2. FIELD WIRING: USE UL LISTED, STRANDED,
TWISTED PAIRS, OVERALL FOIL SHIELD WITH
STRANDED DRAIN WIRE SUITABLE FOR RS422
EQUIVALENT TO:

(STANDARD 80°C) BELDEN 9842 OR 9829 OR ALPHA
6202C OR 6222C

(PLENUM RATED) BELDEN 89729 OR 82729 OR
ALPHA 58902

TRANSFER SWITCHING EQUIPMENT (IEC/CE) RATED UP TO 480 VAC MAX.					B		SEE ECN			
					A		275211 TR BK 10/16/18 SEE ECN			
					—		267226 TR BK 5/23/17 ISSUE			
PROJECT NAME:					REV. TO SHEET	ECN NO.	BY	APP.	DATE	
WIRING					DIAGRAM			 THIRD ANGLE PROJECTION		
200 SERIES J2ATS/J2NTS, THREE PHASE 260 & 400 AMPS										
"J" FRAME, GROUP G CONTROLS										
BY		DATE		MANUFACTURING TOLERANCES TO BE IN ACCORDANCE WITH ASQO PROCEDURE MP-I-003. FOR PLASTIC PARTS SEE MP-I-005		ASSEM. REF. NO.			COMPUTER GENERATED DRAWING	
DRAWN BY	TR	5/23/17							SCALE NONE SIZE DS	
CHECKED	BK	5/23/17		PROPERTY OF ASCO POWER TECHNOLOGIES, USE PERMITTED FOR OUR WORK ONLY. ALL RIGHTS OF DESIGN OR INVENTION ARE RESERVED.					DWG. NO. 1192728	
PROJECT APPROVAL	BK	5/23/17							DRAWING REV. B	
FINAL APPROVAL									ECN NO. 280124	
									SHEET 2 OF 6	
 ASCO POWER TECHNOLOGIES, L.P. FLORHAM PARK, NEW JERSEY 07932 U.S.A.										

D

C

B

A

D

C

B

A

MAIN POWER POLES

TS OPERATOR CIRCUIT

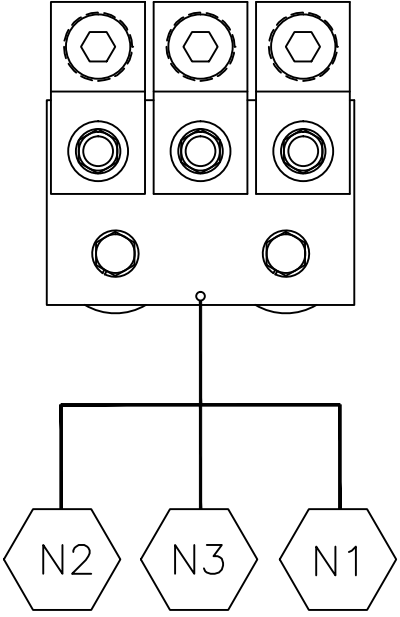
EMERGENCY

NORMAL

EMERGENCY

NORMAL

OPTIONAL SOLID NEUTRAL
FOR 2ATS AND 2NTS



(NTA)

SWITCHED/OVERLAPPING NEUTRAL

OPTIONAL NEUTRAL TYPES

REFER TO "EXPLANATION OF CATALOG NUMBER CODES"
IN CATALOG NUMBER CHART ON SHEET 1.

- SOLID BUS PLATE(NTA)
- SWITCHING CONTACTS
- OVERLAPPING CONTACTS

NOTE:
ATSE SHOWN CLOSED ON NORMAL SOURCE.

TS CONTROL CONTACTS					
TS	SOLENOID POSITION				
	CLOSED BEFORE NORMAL	BEFORE TDC	>	<	BEFORE CLOSED TDC EMERG
13-14					
15-16					
17-18					
19-20					

TDC (TOP DEAD CENTER)
TRANSFER SWITCHING DEVICE TEST & ADJUSTMENT PROCEDURE
SPECIFIES CONTROL CUT-OFF (CONTACT OPENING)
SETTING.

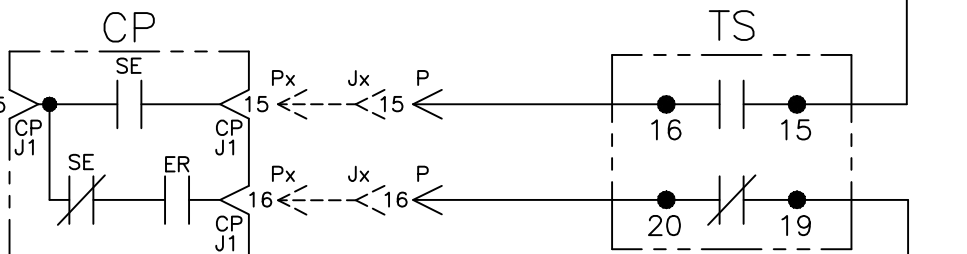
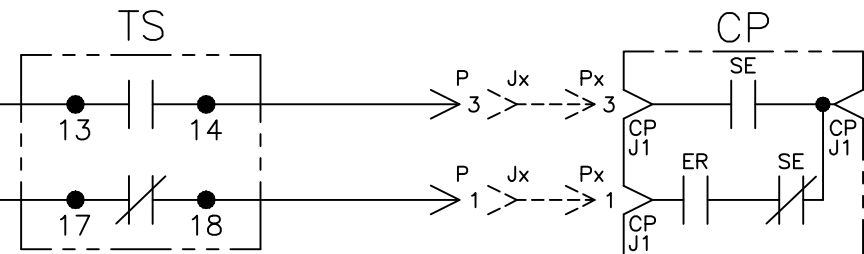
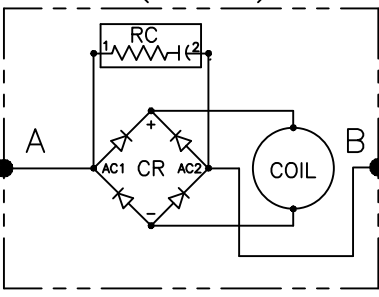
U1

U2

W1

W2

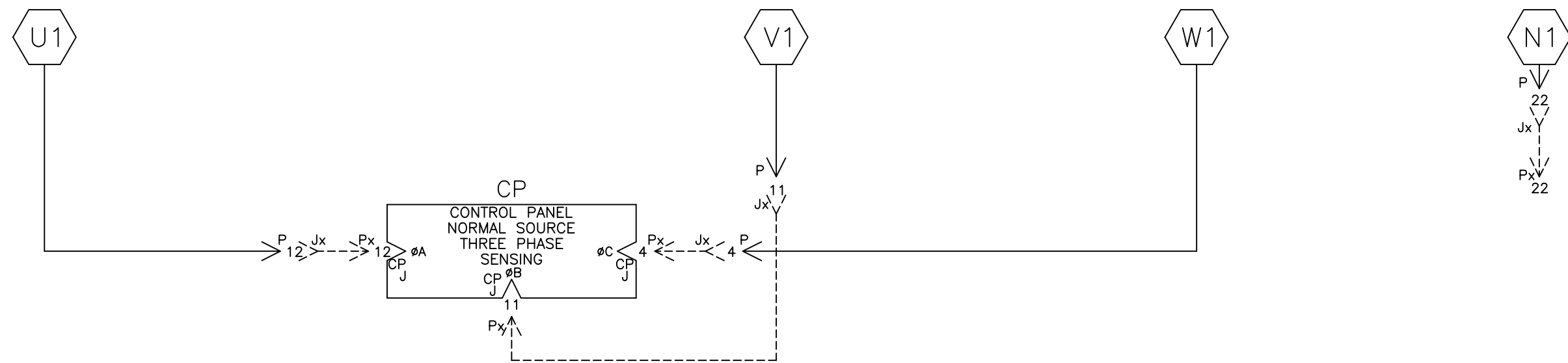
TS
(SOLENOID
ASSEMBLY)



B		280124	TR	BK	8/1/19
A		275211	TR	BK	10/16/18
—		267226	TR	BK	5/23/17
ISSUE		ECN NO.	BY	APP.	DATE
PROJECT NAME:		REV. TO SHEET	ECN NO.	BY	APP.
WIRING		DIAGRAM			
200 SERIES J2ATS/J2NTS, THREE PHASE 260 & 400 AMPS					
"J" FRAME, GROUP G CONTROLS					
DRAWN BY		TR	DATE	5/23/17	MANUFACTURING TOLERANCES TO BE IN ACCORDANCE WITH ASCO PROCEDURE MP-1-003. FOR PLASTIC PARTS SEE MP-1-005.
CHECKED BY		BK	DATE	5/23/17	PROPERTY OF ASCO POWER TECHNOLOGIES, USE PERMITTED FOR OUR WORK ONLY. ALL RIGHTS OF DESIGN OR INVENTION ARE RESERVED.
PROJECT APPROVAL		BK	DATE	5/23/17	ASCO POWER TECHNOLOGIES, L.P. FLORHAM PARK, NEW JERSEY 07932 U.S.A.
FINAL APPROVAL			DATE		
SCALE		NONE	SIZE	DS	
DWG. NO.		1192728			
DRAWING B		ECN NO.	280124	SHEET	3 OF 6

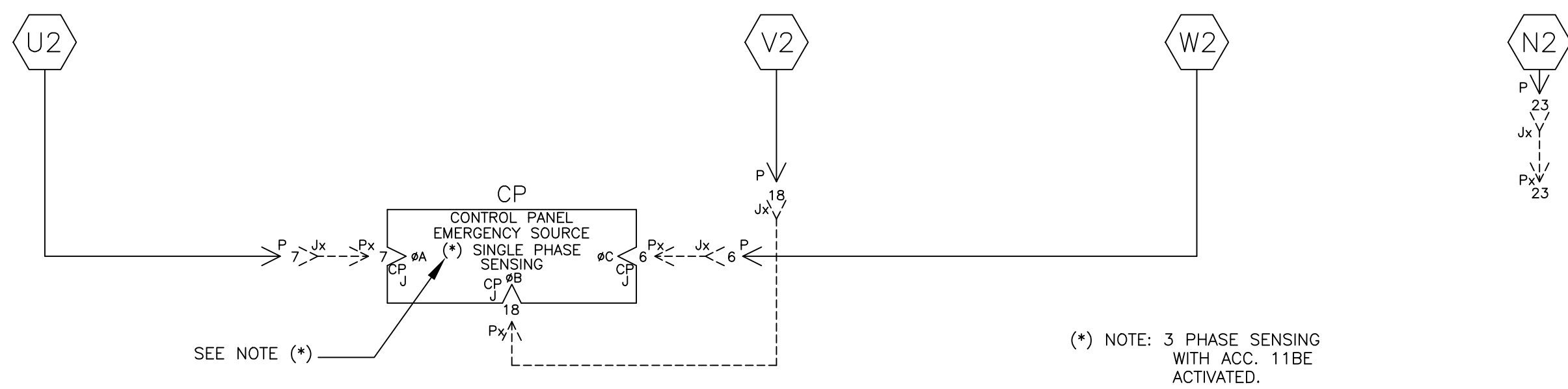
NORMAL SOURCE CIRCUITS

NORMAL



EMERGENCY SOURCE CIRCUITS

EMERGENCY

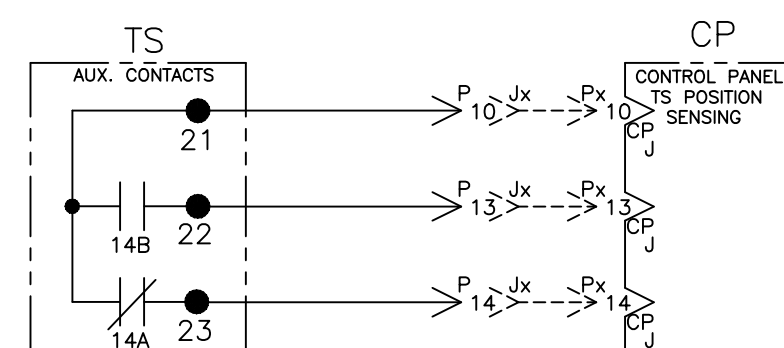


LOAD TERMINAL CIRCUITS

LOAD



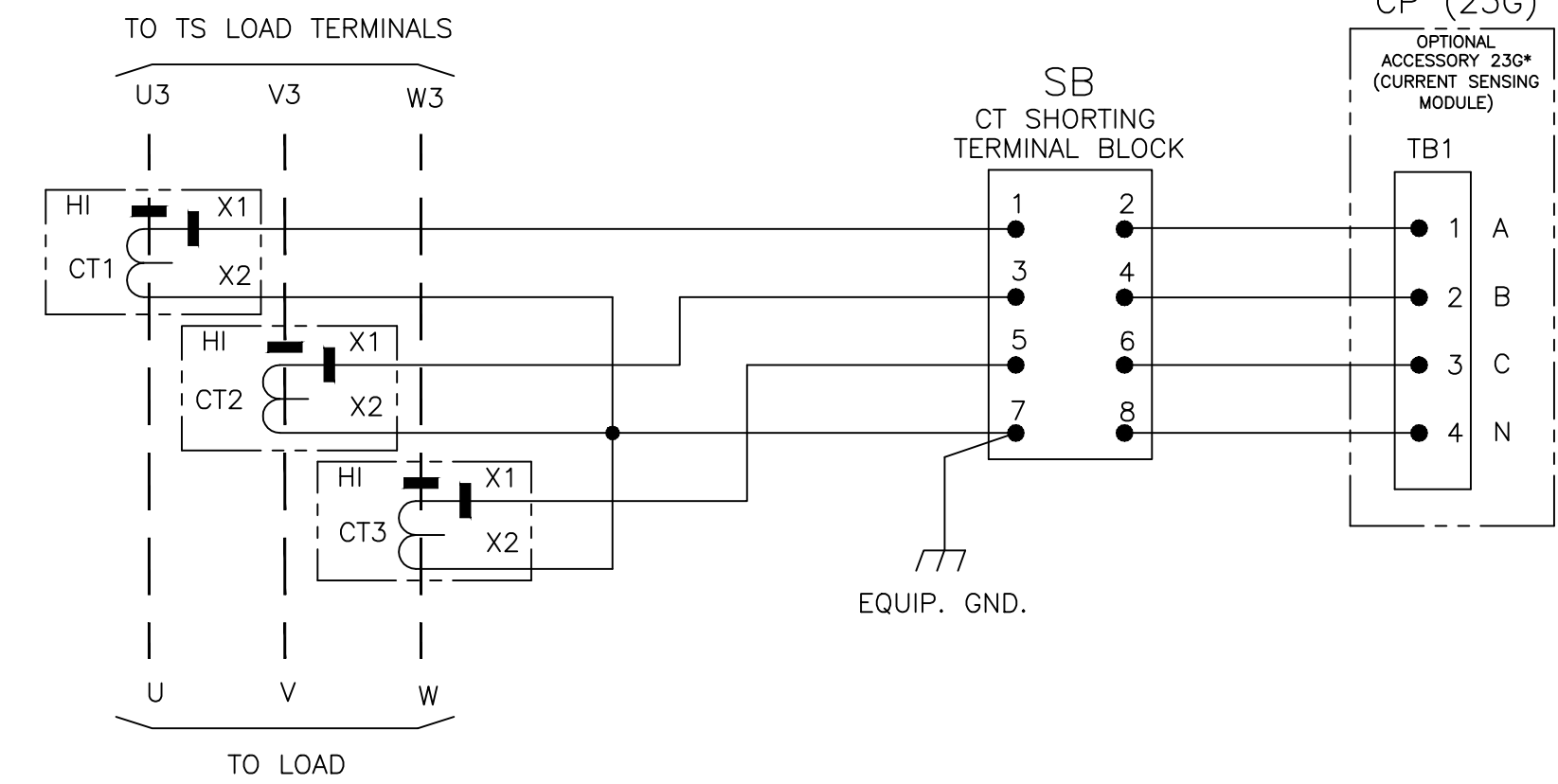
CONTROL SIGNALS & INDICATION

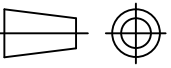


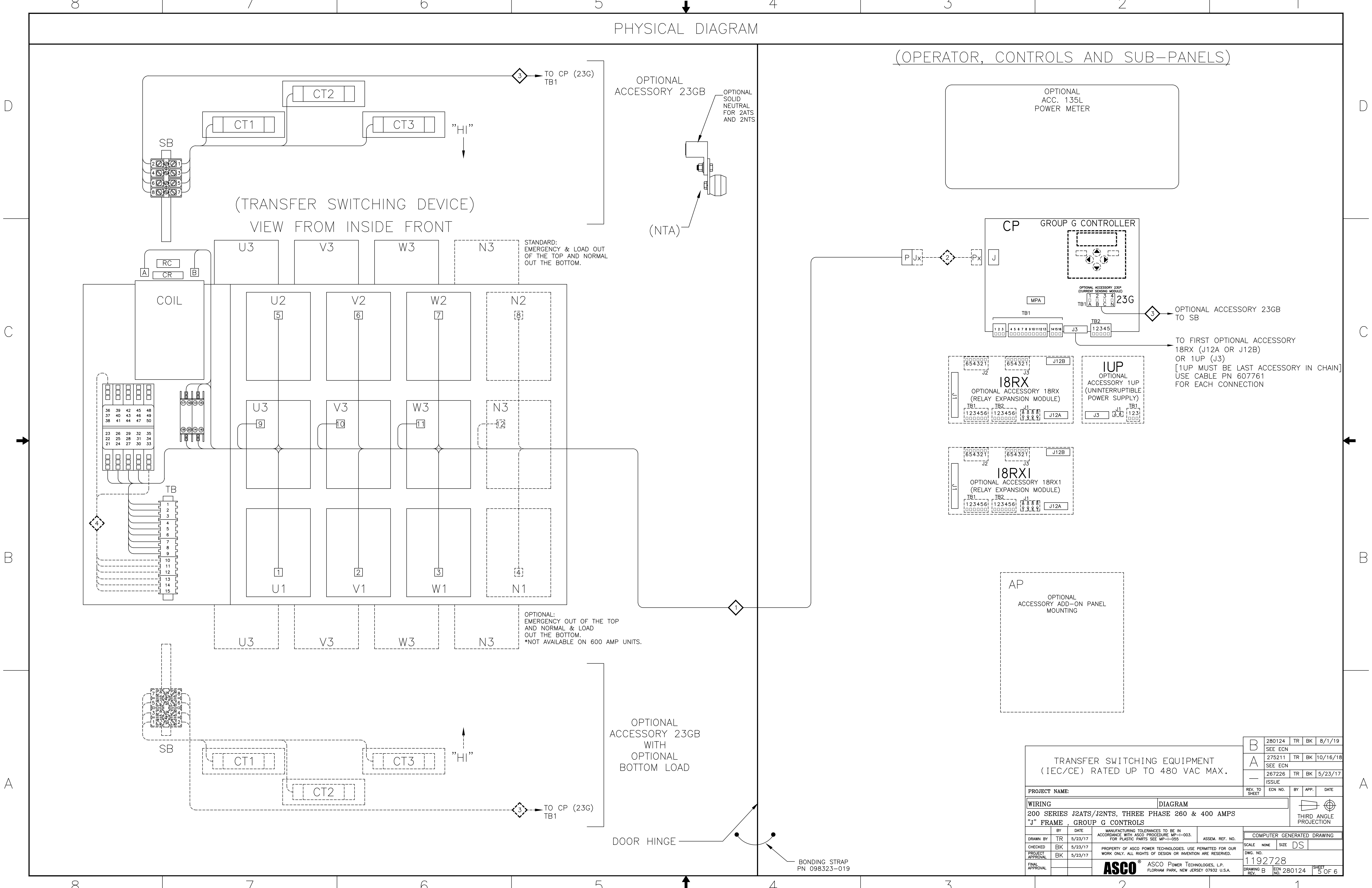
ADDITIONAL CIRCUITS

OPTIONAL ACCESSORY 23GB (LOAD CURRENT METERING)

CURRENT TRANSFORMER RATIO TABLE	
SWITCH RATING	CT RATIO
260A	300:5A
400A	400:5A



TRANSFER SWITCHING EQUIPMENT (IEC/CE) RATED UP TO 480 VAC MAX.				B		280124		TR		BK		8/1/19					
				A		275211		TR		BK		10/16/18					
				—		267226		TR		BK		5/23/17					
				ISSUE													
PROJECT NAME:				REV. TO SHEET		ECN NO.		BY		APP.		DATE					
WIRING				DIAGRAM													
200 SERIES J2ATS/J2NTS, THREE PHASE 260 & 400 AMPS "J" FRAME , GROUP G CONTROLS												THIRD ANGLE PROJECTION					
BY		DATE		MANUFACTURING TOLERANCES TO BE IN ACCORDANCE WITH ASCO PROCEDURE MP-I-003. FOR PLASTIC PARTS SEE MP-I-005				ASSEM. REF. NO.		COMPUTER GENERATED DRAWING							
DRAWN BY		TR		5/23/17						SCALE		NONE		SIZE		DS	
CHECKED		BK		5/23/17		PROPERTY OF ASCO POWER TECHNOLOGIES. USE PERMITTED FOR OUR WORK ONLY. ALL RIGHTS OF DESIGN OR INVENTION ARE RESERVED.				DWG. NO.		1192728					
PROJECT APPROVAL		BK		5/23/17						DRAWING		B		ECN		280124	
FINAL APPROVAL						ASCO® ASCO POWER TECHNOLOGIES, L.P. FLORHAM PARK, NEW JERSEY 07932 U.S.A.				SHEET		4		OF 6			



B	280124	TR	BK	8/1/19
	SEE ECN			
	275211	TR	BK	10/16/18
A	SEE ECN			
	267226	TR	BK	5/23/17
	ISSUE			
PROJECT NAME:				
REV. TO SHEET				
ECN NO.				
BY				
APP.				
DATE				
WIRING				
DIAGRAM				
200 SERIES J2ATS/J2NTS, THREE PHASE 260 & 400 AMPS				
"J" FRAME, GROUP G CONTROLS				
DRAWN BY	TR	DATE	5/23/17	MANUFACTURING TOLERANCES TO BE IN ACCORDANCE WITH ASCO PROCEDURE MP-1-003. FOR PLASTIC PARTS SEE MP-1-005.
CHECKED	BK	DATE	5/23/17	PROPERTY OF ASCO POWER TECHNOLOGIES, L.P. USE PERMITTED FOR OUR WORK ONLY. ALL RIGHTS OF DESIGN OR INVENTION ARE RESERVED.
PROJECT APPROVAL	BK	DATE	5/23/17	ASCO POWER TECHNOLOGIES, L.P. FLORHAM PARK, NEW JERSEY 07932 U.S.A.
FINAL APPROVAL		DATE		
SCALE		NONE		SIZE DS
DWG. NO.		1192728		REV.
ECN NO.		280124		SHEET 5 OF 6

DCDCB

1

AA