

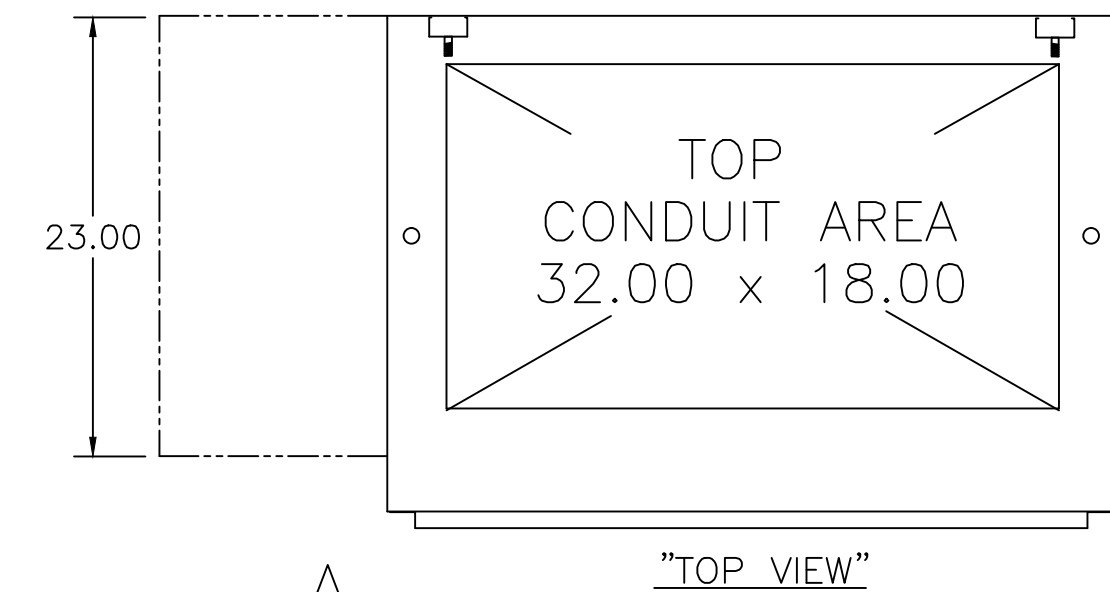
OUTLINE & MOUNTING FOR **ASCO**® 7000 SERIES TRANSFER SWITCH TYPE 7MTS RATED 1000-1200 AMPERES.

D

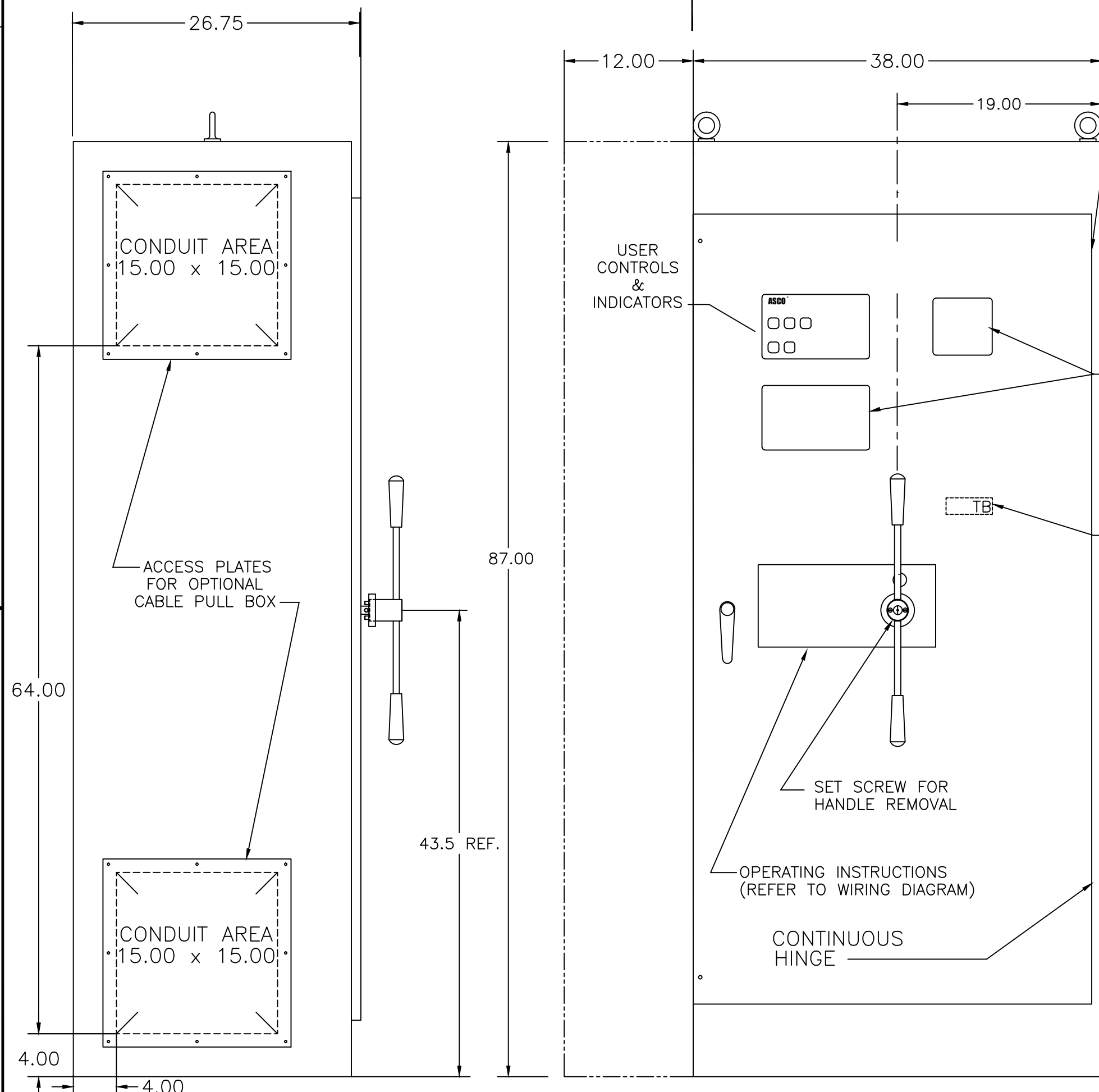
C

B

A

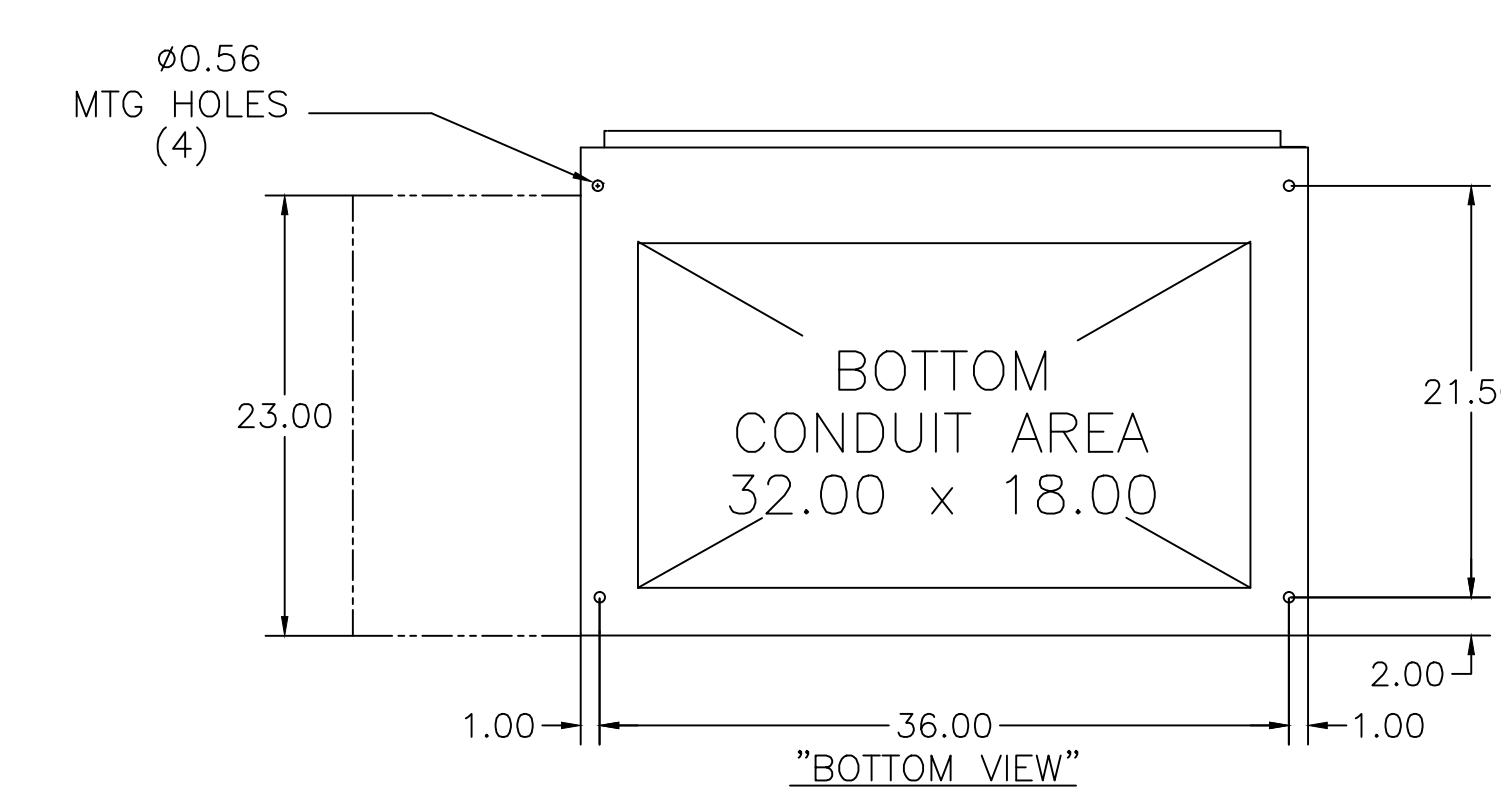


"TOP VIEW"

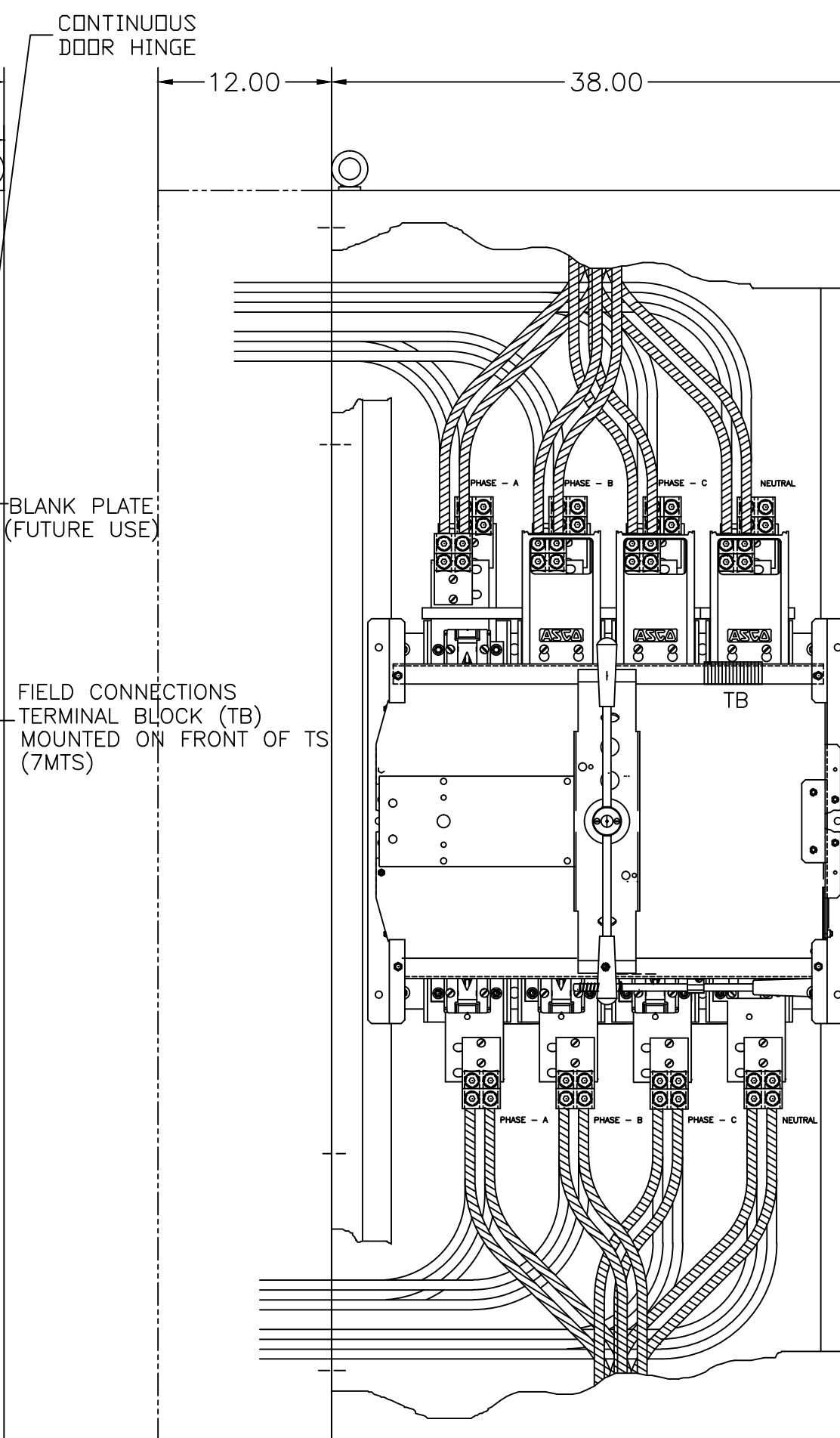


"FRONT VIEW"

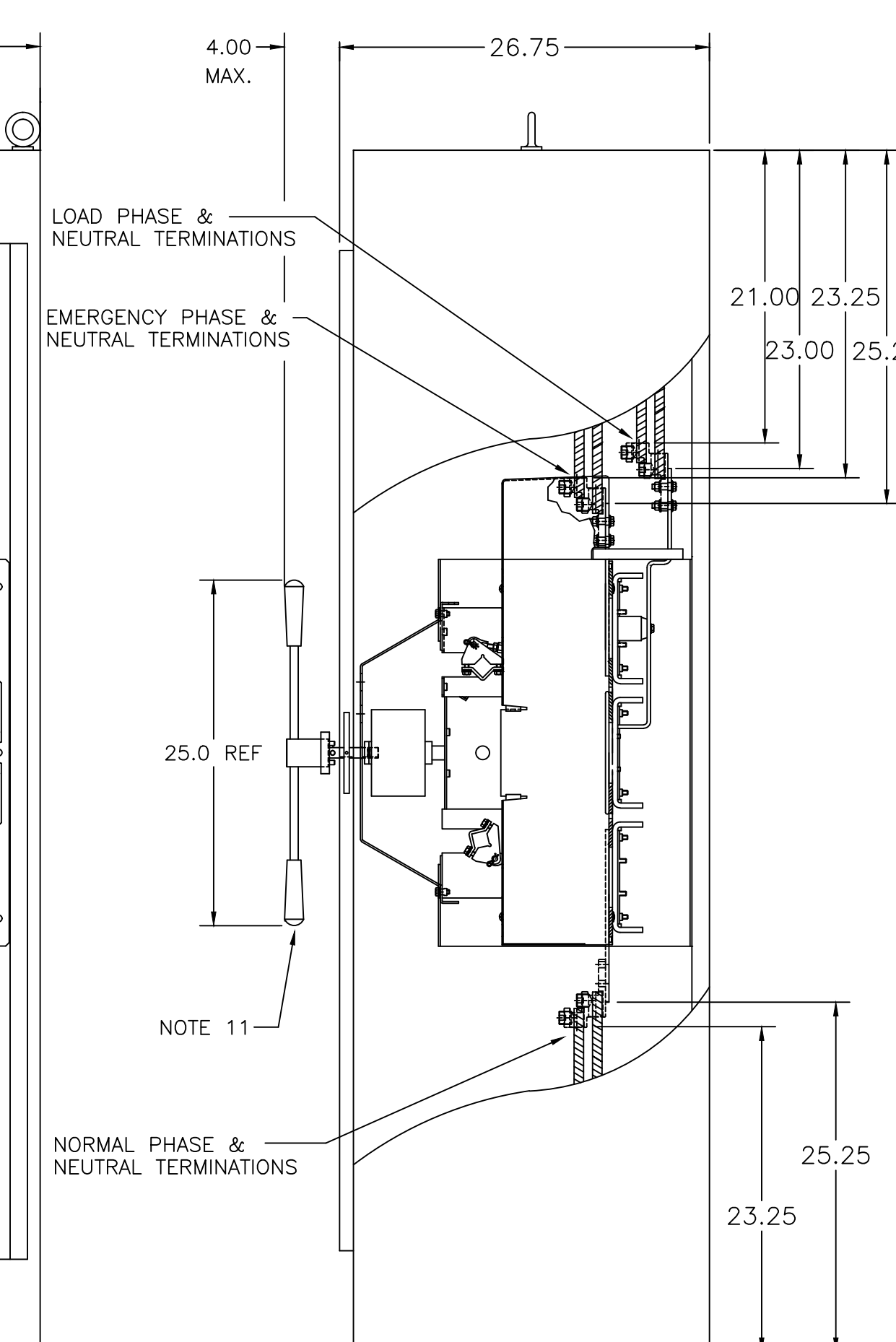
PULL BOX  
OPTIONAL



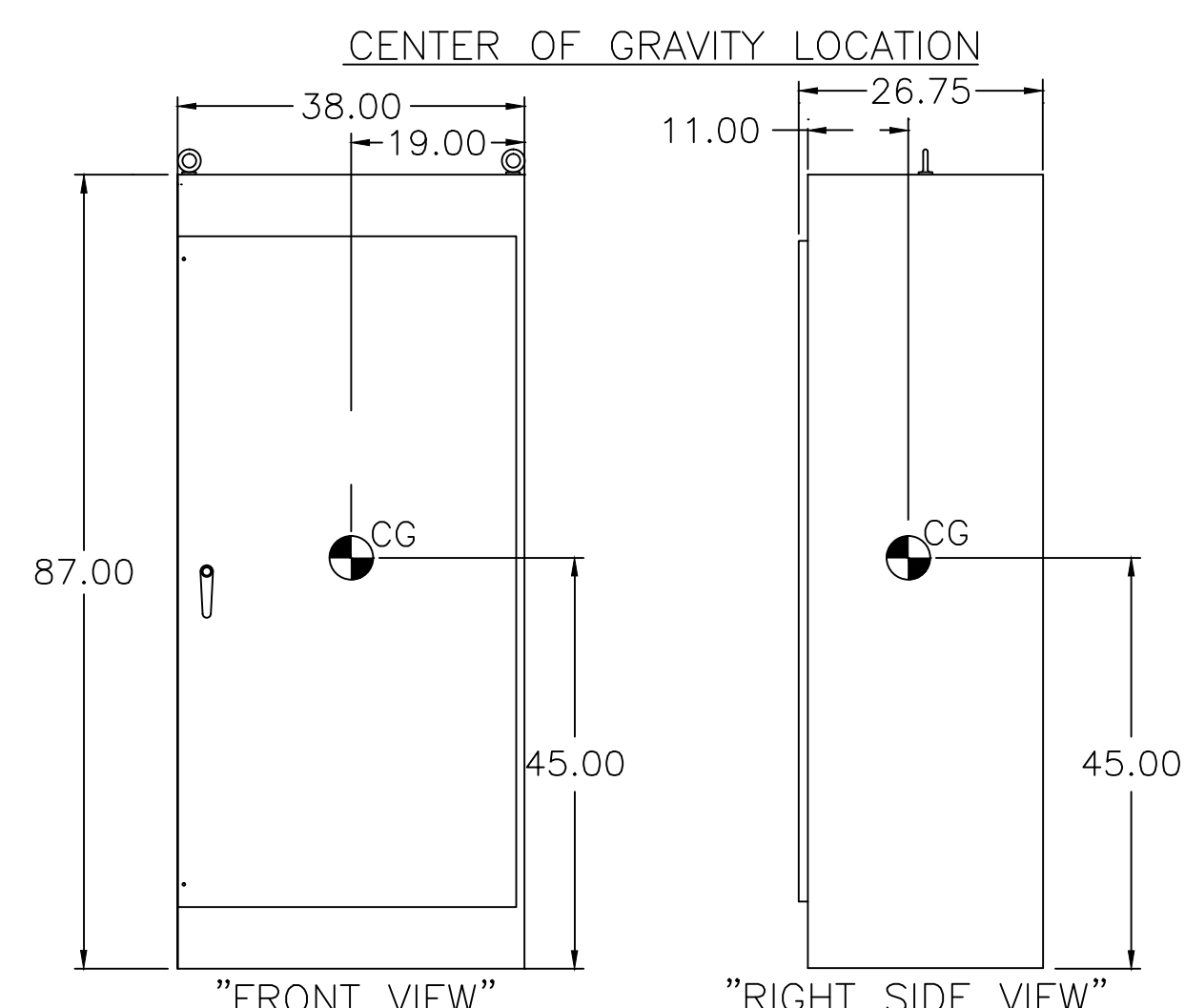
"BOTTOM VIEW"



"FRONT VIEW"  
WITH DOOR REMOVED



"RIGHT SIDE VIEW"



"FRONT VIEW"

"RIGHT SIDE VIEW"

GENERAL NOTES

1. TYPE 1 ENCLOSURE, FREE STANDING, FLOOR MOUNTED, 12 GAUGE FORMED FRAME CONSTRUCTION.
2. NEC STANDARD GAUGE PAN TYPE DOOR WITH LOCKABLE HANDLE.
3. FINISH: ASA 61 GRAY, POLYESTER POWDER. UL RECOGNIZED.
4. CONSTRUCTION IS IN ACCORDANCE WITH APPLICABLE REQUIREMENTS OF UL 891.
5. RECOMMENDED CLEARANCES:  
FRONT: 36.00" INCHES
6. A 20% RATED GROUND BUS IS PROVIDED.
7. UNIT IS DESIGNED FOR COMBINATION TOP AND BOTTOM CABLE ENTRY, THE STANDARD SWITCH CONFIGURATION IS FOR TOP ENTRY EMERGENCY & LOAD AND BOTTOM ENTRY NORMAL. OPTIONALLY, THE SWITCH MAY BE SUPPLIED WITH REVERSE SOURCES AND/OR BOTTOM ENTRY LOAD. (REFER TO THE WIRING DIAGRAM FURNISHED WITH EACH TRANSFER SWITCH TO DETERMINE TERMINATION POSITIONS).  
**IMPORTANT NOTE:**  
UNDER NO CIRCUMSTANCES SHOULD POWER CABLES BE ROUTED ALONG THE SIDES OF THE TRANSFER SWITCH. AN OPTIONAL CABLE PULL BOX WHICH MOUNTS ON THE LEFT SIDE OF THE ENCLOSURE IS AVAILABLE. WHEN CONDITIONS EXIST FOR WHICH CABLES MUST RUN BETWEEN THE TOP AND BOTTOM OF THE UNIT, GROUND CONDUCTORS ONLY MAY BE RUN ALONG THE LEFT SIDEWALL OF THE ENCLOSURE.
8. A FULL RATED NEUTRAL CONNECTION FOR EACH SOURCE AND THE LOAD IS OPTIONAL. WHEN PROVIDED IT IS IN ONE OF THE FOLLOWING FORMATS AS SPECIFIED BY THE CATALOG NO. NEUTRAL TYPE;  
A. SOLID (COPPER BUS) NEUTRAL  
B. SWITCHED NEUTRAL POLE
9. NO KNOCKOUTS ARE PROVIDED.
10. PULL BOX AVAILABLE FOR TOP AND BOTTOM CABLE ACCESS WHEN REQUIRED (OPTIONAL)
11. SHIPPED WITH ACC. 35 QUICK MAKE – QUICK BREAK HANDLE ATTACHED
12. CENTER OF GRAVITY

CABLING NOTES

1. ALL SIZES SUPPLIED STANDARD WITH MECHANICAL (SCREW TYPE) LUGS ON THE NORMAL, EMERGENCY & LOAD BUS STABS. ONE (1) LUG PER PHASE AND NEUTRAL EACH SUITABLE FOR CONNECTION OF FOUR (4) 1/0 – 750MCM CU/AL CABLE (SEE NOTE "E" BELOW).  
A. LUG MATERIAL: ALUMINUM ALLOY 6061-T6 WITH ELECTRO TIN PLATED FINISH.  
B. SCREW MATERIAL: ALUMINUM ALLOY 6262-T9 WITH ELECTRO TIN PLATED FINISH.  
C. UL LISTED, CSA CERTIFIED.  
D. LUG SCREW TIGHTENING TORQUE PER UL 486B: 19 FT-LBS.  
E. SUITABLE WIRE BENDING SPACE IS PROVIDED FOR UP TO FOUR (4) 600MCM CABLES PER TERMINAL PER NEC.
2. OPTIONAL COPPER CRIMP LUGS MAY BE SUPPLIED. UP TO FOUR (4) TWO HOLE, LONG BARREL CU CRIMP LUGS RATED FOR UP TO 600MCM. (REFER TO CRIMP LUG INSTALLATION DATA PROVIDED WITH UNIT FOR FULL INSTALLATION DETAILS).  
A. LUG MATERIAL: HIGH CONDUCTIVITY WROUGHT COPPER FINISH, ELECTRO TIN PLATED.  
B. UL LISTED, CSA CERTIFIED.  
C. LUG MOUNTING HARDWARE TIGHTENING TORQUE: (REFER TO WITHSTAND CURRENT RATING LABEL PROVIDED ON EACH TRANSFER SWITCH).  
D. SUITABLE WIRE BENDING SPACE IS PROVIDED FOR UP TO FOUR (4) 600MCM CABLES PER TERMINAL PER NEC.
3. CONSULT FACTORY FOR OTHER TERMINATION REQUIREMENTS.
4. GROUND LUGS ARE PROVIDED STANDARD AS FOLLOWS;  
(12) 1/0 – 750MCM CU/AL CABLE

|             |         |    |    |          |
|-------------|---------|----|----|----------|
| C<br>B<br>A | 273924  | TR | BK | 08/08/18 |
|             | SEE ECN |    |    |          |
|             | 232612  | TR | WK | 6/24/11  |
|             | SEE ECN |    |    |          |
| —           | 156289  | BK | BK | 3/12/01  |
|             | SEE ECN |    |    |          |
| —           | 156284  | BK | BK | 1/24/01  |
| —           | ISSUE   |    |    |          |

|  |               |   |                 |                            |                |
|--|---------------|---|-----------------|----------------------------|----------------|
| PROJECT NAME:                                      | REV. TO SHEET | ECN NO.   | BY              | APP.                       | DATE           |
| OUTLINE & MOUNTING                                 |               |   |                 |                            |                |
| 7000 SERIES (7MTS) WITH RIGHT SIDE 12.00" PULL BOX |               |   |                 |                            |                |
| 1000-1200 AMPERES                                  |               |   |                 |                            |                |
| DRAWN BY BK  | DATE 1/01     | MANUFACTURING TOLERANCES TO BE IN ACCORDANCE WITH ASCO PROCEDURE MP-1-003. FOR PLASTIC PARTS SEE MP-1-005             | ASSEM. REF. NO. | COMPUTER GENERATED DRAWING |                |
| CHECKED WK   | DATE 2/01     | PROPERTY OF ASCO POWER TECHNOLOGIES, USE PERMITTED FOR OUR WORK ONLY. ALL RIGHTS OF DESIGN OR INVENTION ARE RESERVED. |                 | SCALE                      | NONE           |
| PROJECT APPROVAL                                   |               |   |                 | DWG. NO.                   | SIZE DS        |
| FINAL APPROVAL WK                                  | DATE 2/01     |   |                 | 619413-003                 |                |
|  |               | ASCO® ASCO POWER TECHNOLOGIES, L.P. FLORHAM PARK, NEW JERSEY 07932 U.S.A.   |                 | DRAWING C                  | ECN NO. 273924 |
|  |               |   |                 | REV.                       | SHEET 1 OF 1   |