

D

D

GENERAL NOTES

1. TYPE 4 ENCLOSURE. FREE STANDING. CODE GAUGE STEEL. SEAMWELDED CONSTRUCTION.
2. DOOR CLAMPS ON THREE SIDES. SEAL GASKETED DOOR. HASP AND STAPLE FOR PADLOCKING.
3. FINISH: ANSI 61 GRAY POLYESTER SEMI GLOSS ELECTROSTATIC POWDER.
4. RECOMMENDED CLEARANCES:
FRONT: 38 INCHES
5. ALL BUS IS SILVER-PLATED COPPER, BASED ON 1000A PER SQ. IN. DENSITY.
6. A FULL RATED NEUTRAL CONNECTION FOR EACH SOURCE AND THE LOAD IS OPTIONAL. WHEN PROVIDED IT IS IN ONE OF THE FOLLOWING FORMATS AS SPECIFIED BY THE CATALOG NO. NEUTRAL TYPE;
A. SOLID (COPPER BUS) NEUTRAL (PROVIDED STANDARD ON H3AUS)
B. SWITCHED NEUTRAL POLE (SHOWN)
C. OVERLAPPING NEUTRAL POLE (NOT AVAILABLE ON 7ACUS/7ADUS UNITS)
7. DESIGNED FOR FRONT ACCESS ONLY.
8. FOR SPECIFIED TRANSFER SWITCH, REFER TO OPERATOR'S MANUAL PROVIDED WITH UNIT.

SPECIFICATIONS

1. SERVICE VOLTAGE:
SYSTEM RATING: 150 AMPS, 175 AMPS, 200 AMPS, 225 AMPS, 250 AMPS,
300 AMPS, 350 AMPS, OR 400 AMPS. 3ø, 4W OR 1ø, 3W.
GROUND BUS- 80 AMPS
SHORT CIRCUIT RATING- 35,000 AIC RMS SYM @ 480V, 65,000 AIC RMS SYM @ 240V.
THE EMERGENCY SOURCE INPUT MUST BE PROTECTED BY A REMOTE OVERCURRENT PROTECTION DEVICE AS LISTED ON THE MARKINGS ON THE TRANSFER SWITCH.
2. BATTERY VOLTAGE: N/A
3. NEUTRAL BUS: 400 AMPS
4. APPLICABLE LABELS: U.L. 891- SUITABLE ONLY FOR USE AS SERVICE EQUIPMENT.

CABLING NOTES

1. ALL SIZES SUPPLIED STANDARD WITH MECHANICAL (SCREW TYPE) LUGS. (SEE AMP SIZE BELOW)
A. LUG MATERIAL: ALUMINUM ALLOY 6061-T6 WITH ELECTRO TIN PLATED FINISH.
B. SCREW MATERIAL: ALUMINUM ALLOY 6262-T9 WITH ELECTRO TIN PLATED FINISH.
C. UL LISTED, CSA CERTIFIED.
D. LUG SCREW TIGHTENING TORQUE PER UL 486B: 19 FT-LBS.
E. SUITABLE WIRE BENDING SPACE IS PROVIDED. (SEE AMP SIZE BELOW)
2. CONSULT FACTORY FOR OTHER TERMINATION REQUIREMENTS.

NOTES 150-400 AMPS

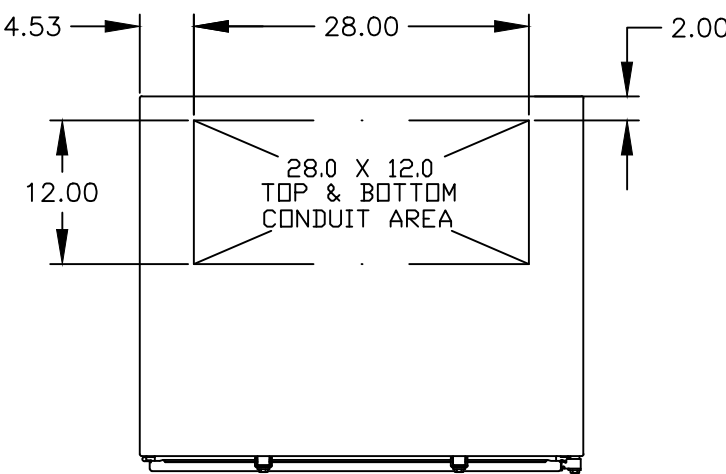
1. SUPPLIED WITH STANDARD MECHANICAL (SCREW TYPE) LUGS ON NORMAL, EMERGENCY & LOAD.
ONE (1) LUG PER PHASE AND NEUTRAL SUITABLE FOR CONNECTION OF TWO (2) 1/0 AWG-250MCM CU/AL CABLE OR ONE (1) #4-600MCM CU/AL CABLE.
A. SUITABLE WIRE BENDING SPACE IS PROVIDED FOR UP TO ONE (1) 600MCM CABLES PER TERMINAL PER NEC.
2. GROUND LUGS ARE PROVIDED STANDARD AS FOLLOWS:
THREE (3) LUGS, EACH SUITABLE FOR CONNECTION OF TWO (2) 1/0 AWG-250MCM CU/AL CABLE OR ONE (1) #4-600MCM CU/AL CABLE.

CIRCUIT BREAKER: ITEM 52U 52G

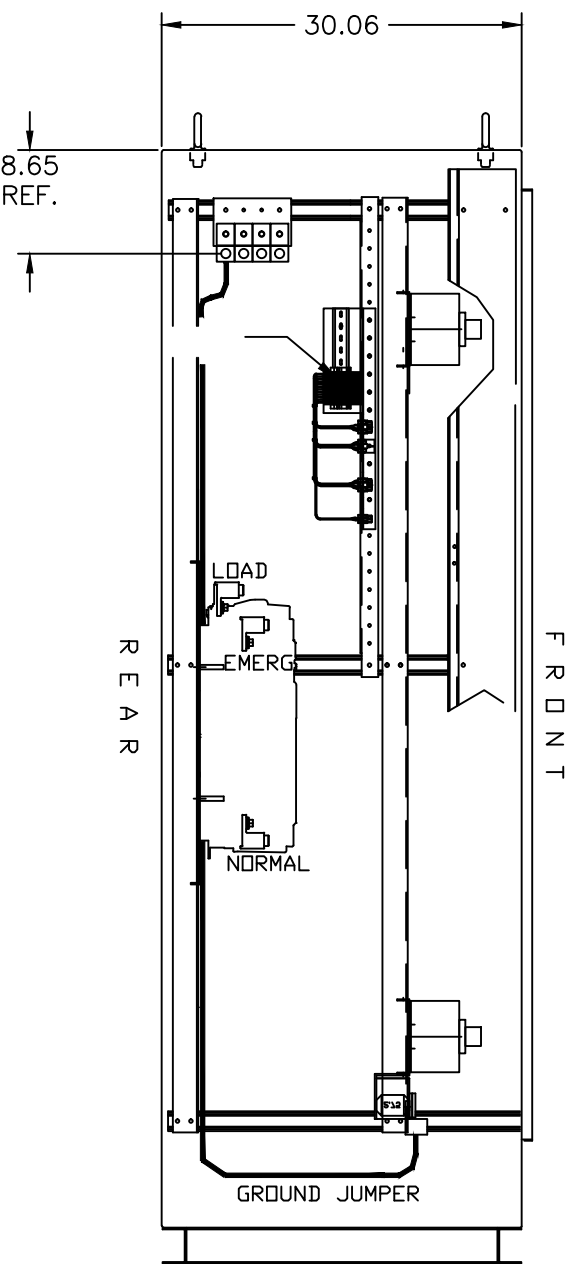
SQUARE "D" 80% RATED TYPE "LHL", 400AF/150AT, 400AF/175AT, 400AF/200AT, 400AF/225AT, 400AF/250AT, 400AF/300AT, 400AF/350AT, 400AF/400AT, MOLDED CASE CIRCUIT BREAKER, THERMAL MAGNETIC TRIP

C

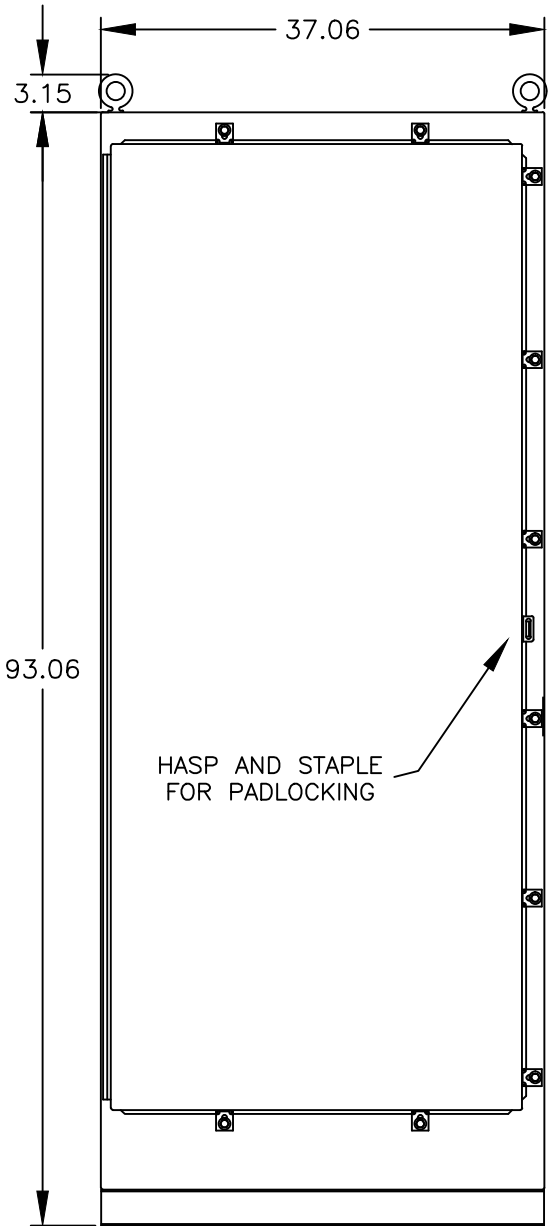
C



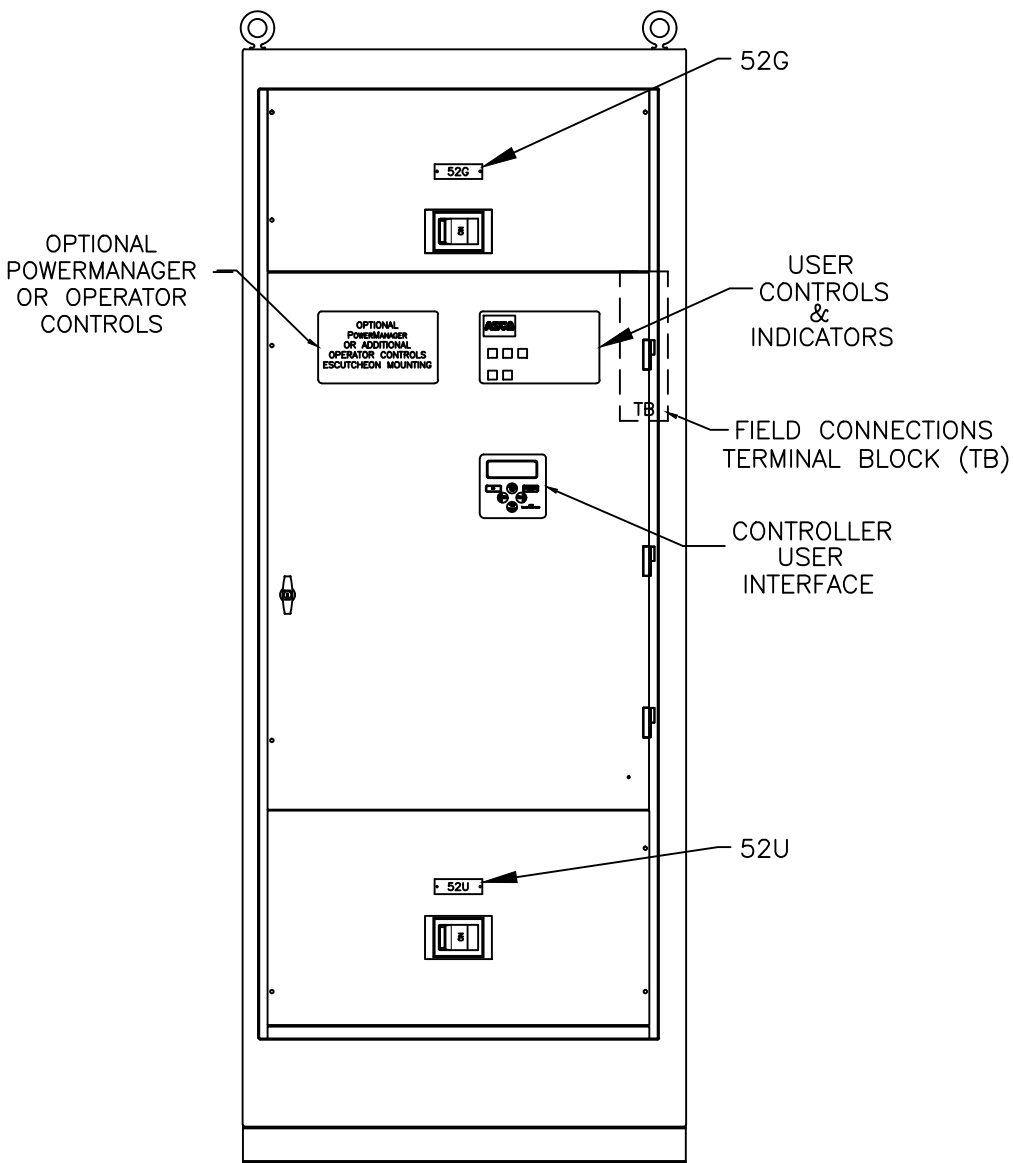
TOP VIEW



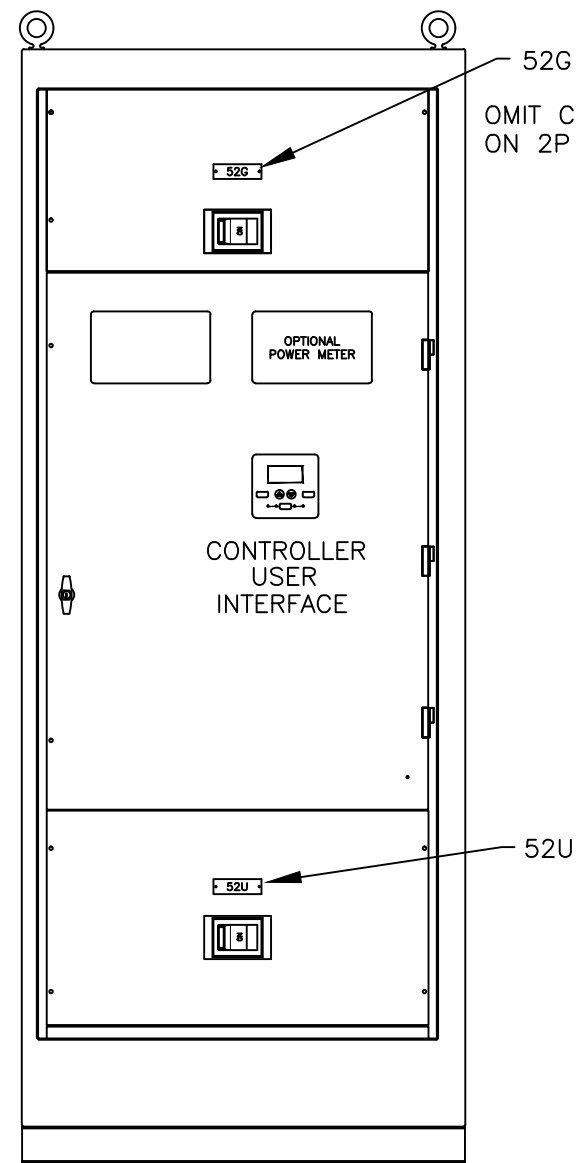
LEFT SIDE VIEW



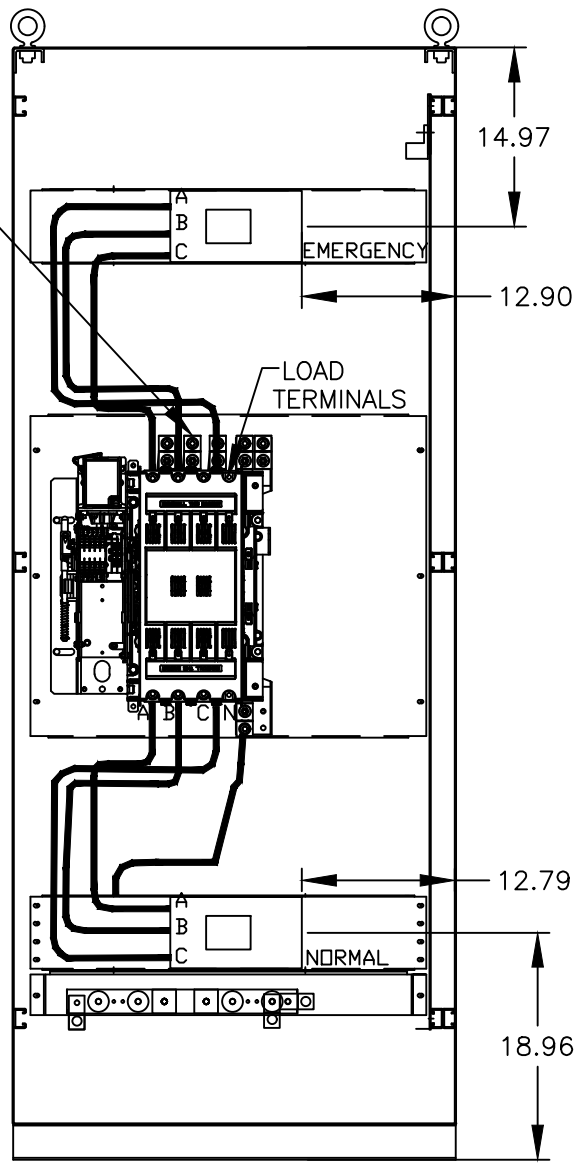
FRONT VIEW



FRONT VIEW: 7000 SERIES

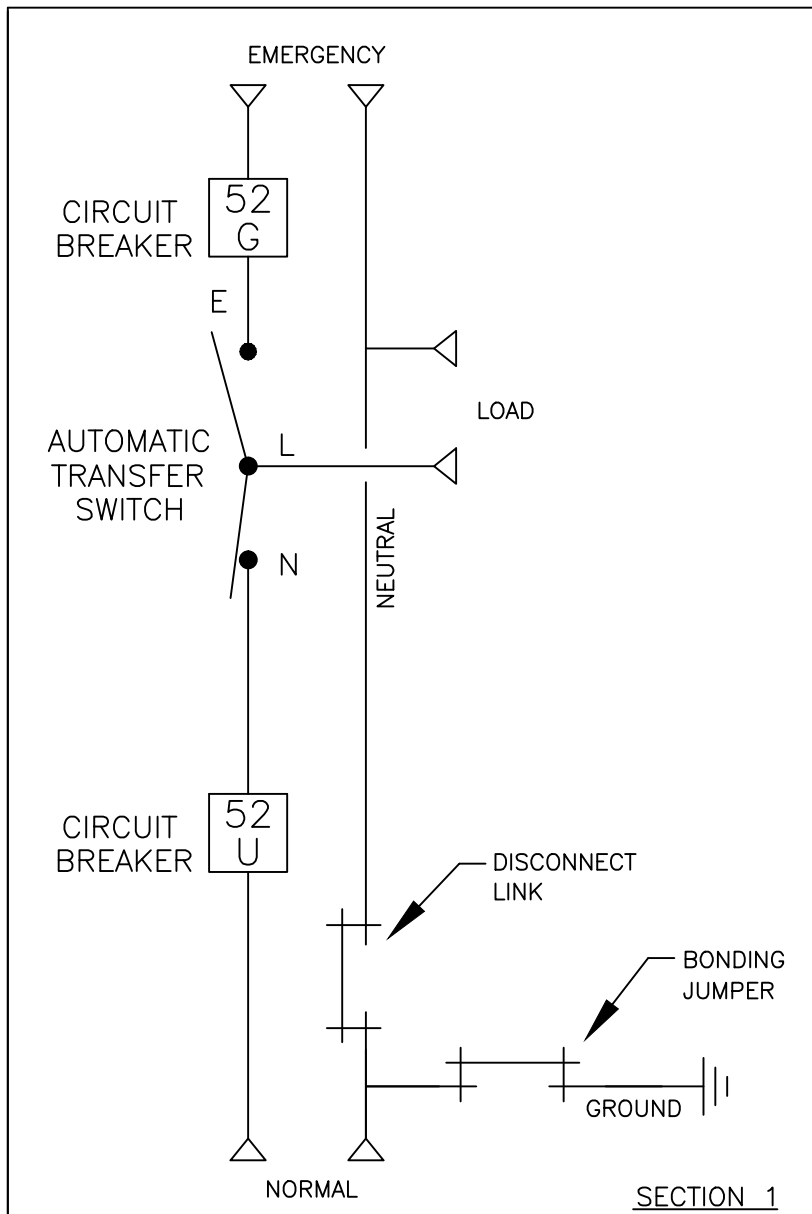


FRONT VIEW: 300 SERIES

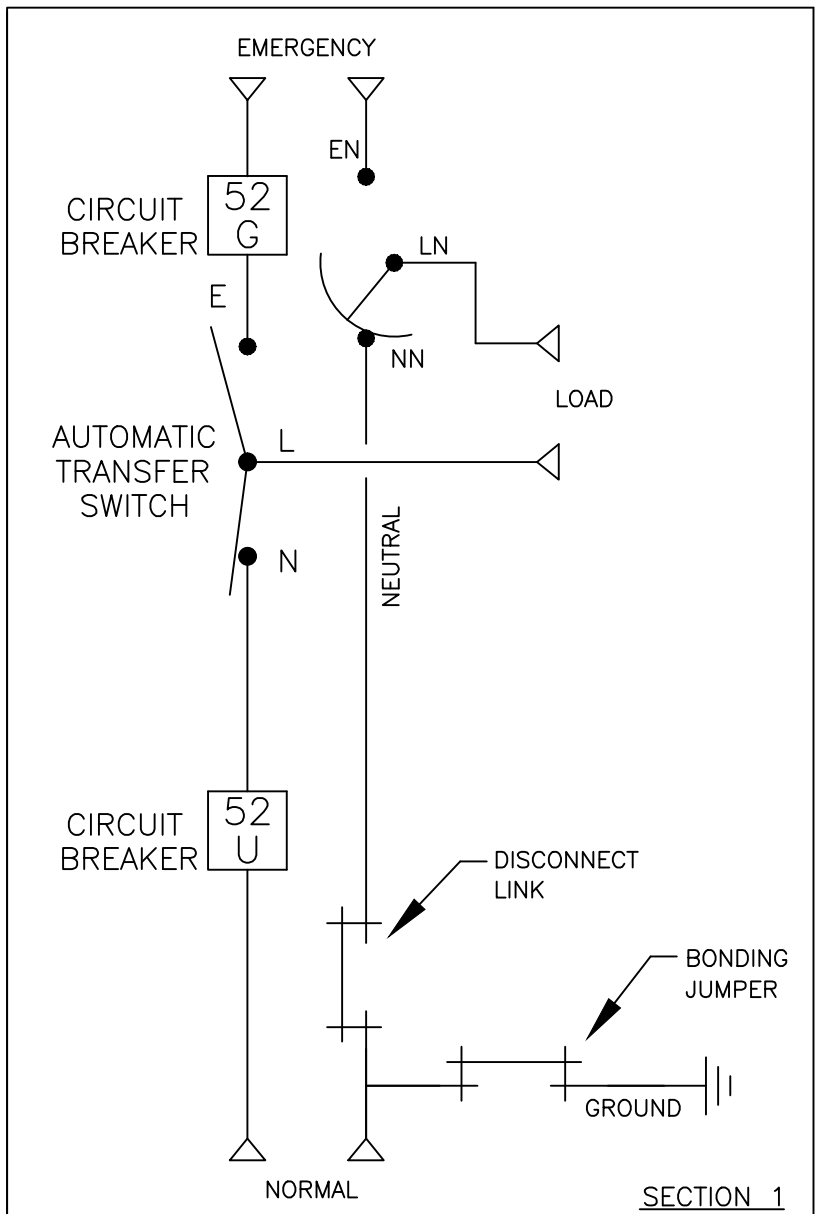


FRONT ELEVATION

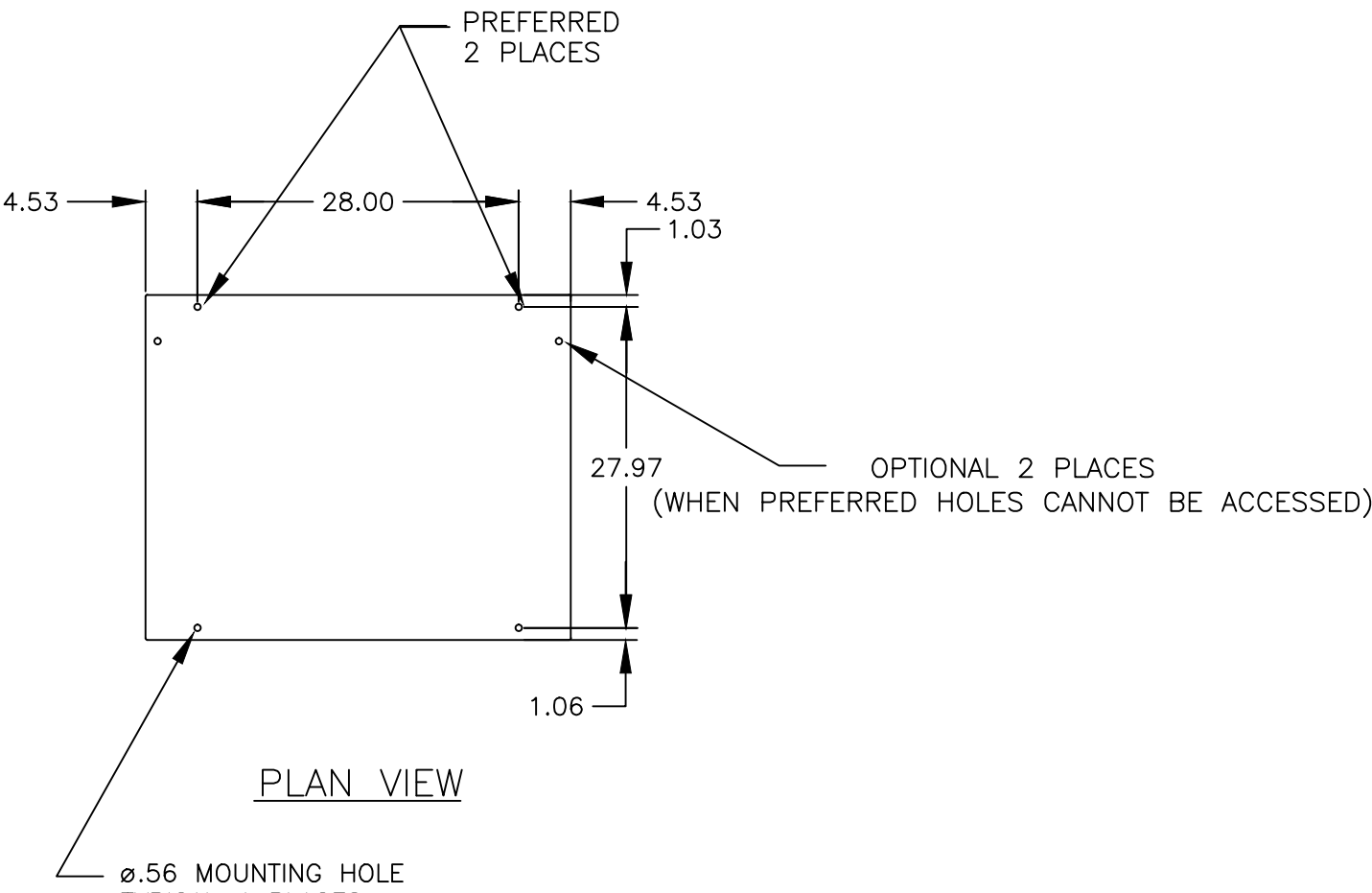
ONE LINE DIAGRAMS



(WITH SOLID NEUTRAL)



(WITH SWITCHED/OVERLAPPING NEUTRAL)



PLAN VIEW

A

A

E	250873	SM	RN	
	SEE ECN			
	248049	VAK	RN	
	SEE ECN			
D	245253	BQ	RN	11/06/13
	SEE ECN			
C	239008	DP	RN	9/18/12
	SEE ECN			
B	221527	DP	RN	1/22/09
	SEE ECN			
A	213925	LY		6/26/07
	ISSUE			
PROJECT NAME:				
REV. TO SHEET				
ECN NO.				
BY				
APP.				
DATE				
THIRD ANGLE PROJECTION				
OUTLINE				
MOUNTING				
JAUS/JAPS 150A-400A LHL SE BREAKERS				
TYPE 4 91 X 37 X 30				
MANUFACTURING TOLERANCES TO BE IN ACCORDANCE WITH ASCO PROCEDURE MP-1-003. FOR PLASTIC PARTS SEE MP-1-005				
PROPERTY OF ASCO POWER TECHNOLOGIES. USE PERMITTED FOR OUR WORK ONLY. ALL RIGHTS OF DESIGN OR INVENTION ARE RESERVED.				
ASCOPower Technologies, L.P. FLORHAM PARK, NEW JERSEY 07932 U.S.A.				
COMPUTER GENERATED DRAWING				
SCALE 1:1 SIZE DS				
DWG. NO. 805714-053				
DRAWING E				
REV. 250873				
SHEET 1 OF 1				