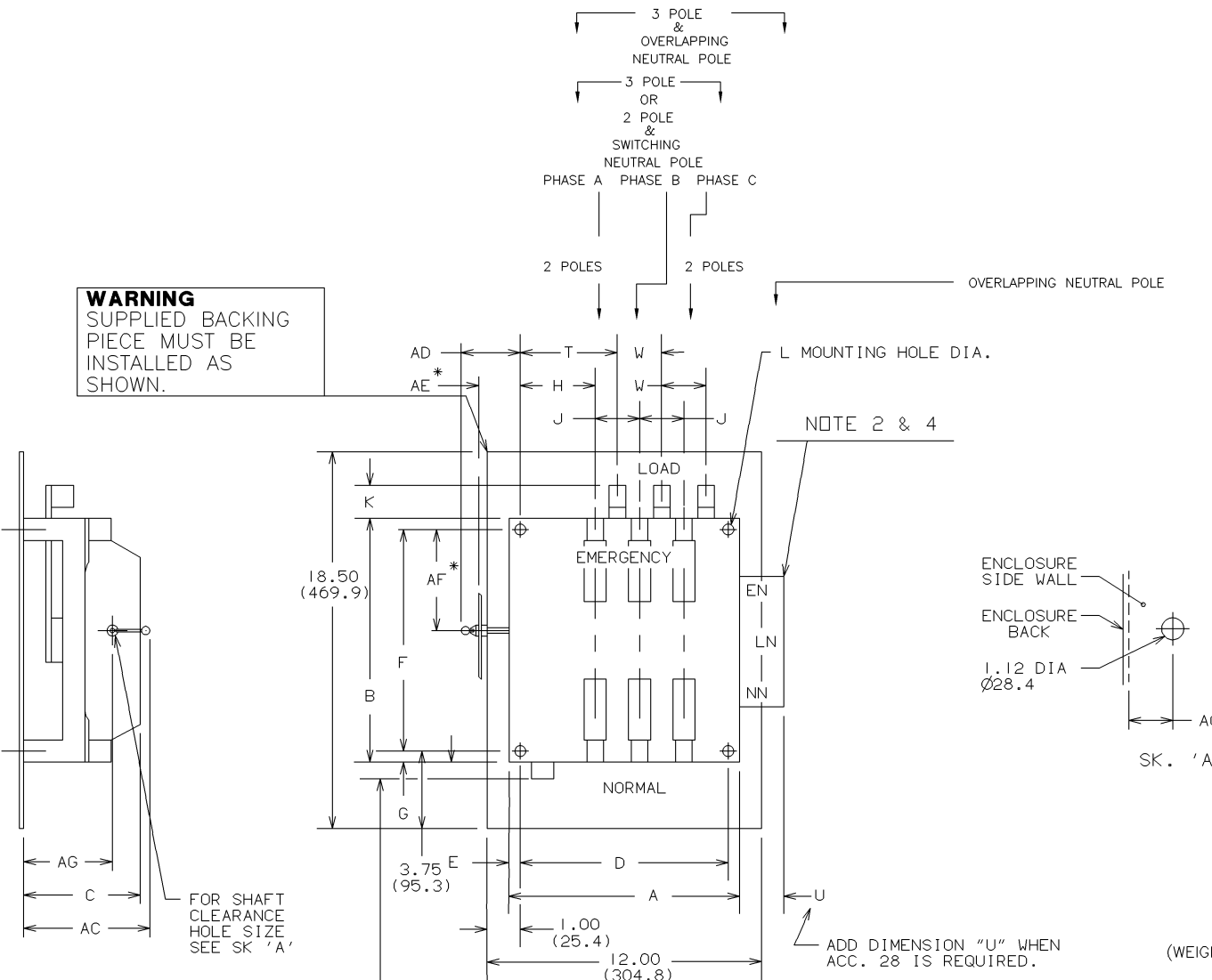


OUTLINE & MOUNTING FOR ASCO 7000 SERIES AUTOMATIC TRANSFER SWITCH TYPE 7ATS RATED 260 THRU 400 AMPERES



GENERAL NOTES

1. THE STANDARD SWITCH CONFIGURATION IS FOR TOP EMERGENCY & LOAD AND BOTTOM NORMAL. OPTIONALLY, THE SWITCH MAY BE SUPPLIED WITH REVERSE SOURCES AND/OR BOTTOM LOAD. (REFER TO THE WIRING DIAGRAM FURNISHED WITH EACH TRANSFER SWITCH TO DETERMINE TERMINATION POSITIONS).
2. A FULL RATED NEUTRAL CONNECTION FOR EACH SOURCE AND THE LOAD IS OPTIONAL. WHEN PROVIDED IT IS IN ONE OF THE FOLLOWING FORMATS AS SPECIFIED BY THE CATALOG NO. NEUTRAL TYPE:  
TYPE A: SOLID NEUTRAL BUS (SUPPLIED LOOSE)  
TYPE B: SWITCHED NEUTRAL POLE (AVAILABLE ONLY ON 2 POLE UNITS)  
TYPE C: OVERLAPPING NEUTRAL POLE
3. THE STANDARD MECHANICAL (SCREW TYPE) AL/CU TERMINAL LUGS ARE SHOWN FOR REFERENCE.
4. SWITCH OVERLAPPING NEUTRAL POLE IS SHOWN FOR REFERENCE.
5. WHEN INSTALLING CONDUCTORS, CONNECT TO SIMILARLY MARKED PHASES OF NORMAL, EMERGENCY & LOAD.
6. ALL INTERNAL CONNECTIONS ARE MADE AT FACTORY.
7. MAINTAIN ELECTRICAL CLEARANCE OF 1 INCH (25.4 mm) BETWEEN LIVE METAL PARTS AND GROUNDED METAL.
8. WHEN MOUNTING THE TRANSFER SWITCH IN AN ENCLOSURE, MOUNT THE TRANSFER SWITCH UNIT ON THE INSIDE BACK SURFACE OF THE ENCLOSURE. THE CONTROL(S) PANEL AND OPERATOR CONTROLS SHOULD BE MOUNTED ON THE INSIDE, REAR SURFACE OF THE DOOR. A MINIMUM DEPTH OF 6 INCHES IS REQUIRED BETWEEN THE TRANSFER SWITCH AND THE CONTROLS WHEN THE DOOR IS CLOSED.
9. THE CONTROL PANEL(S) IS CONNECTED TO THE TRANSFER SWITCH BY A HARNESS WITH A QUICK DISCONNECT PLUG(S). THE HARNESS EXITS THE TRANSFER SWITCH ON THE RIGHT SIDE. CONSULT FACTORY FOR EXTENSION HARNESSES.
10. FOR TYPE 1 ENCLOSURE SEE DETAIL A -1 AND DETAIL B -1 FOR CUTOUT DATA.. FOR TYPE 3R, 4, & 12 ENCLOSURE SEE DETAIL A -2 AND DETAIL B -2 FOR CUTOUT DATA. GASKETS ARE PROVIDED FOR TYPE 3R, 4, & 12 ENCLOSURES. A BEZEL FOR THE CONTROL PANEL IS ALSO PROVIDED FOR TYPE 3R, 4, & 12 ENCLOSURES.
11. AN OPERATOR'S MANUAL IS FURNISHED WITH EACH AUTOMATIC TRANSFER SWITCH. REFER TO THIS PUBLICATION PRIOR TO INSTALLATION AND OPERATION OF THE SWITCH.

UNIT WEIGHT, Kg (LBS)  
(WEIGHT INCLUDES STANDARD TRANSFER SWITCH & CONTROLS)

AMP SIZE	POLES	WEIGHT LBS(Kg)
260 & 400	2	42 (19)
	B2	50 (22.7)
	C2	50 (22.7)
	3	50 (22.7)
	C3	58 (26.3)

SUGGESTED BOLT SIZE FOR MOUNTING A.T.S.:  
1/4-20 X 3 INCH LONG MINIMUM QUANTITY (4)

EXTERNAL POWER CONNECTIONS

SWITCH RATING	RANGE OF AL-CU WIRE SIZE
260-400	TWO #1/0 AWG TO 250 MCM OR ONE #4 AWG TO 600 MCM

2 AND 3 POLE WITH AND WITHOUT ACC. 28

DIMENSIONS																			
A	B	C	D	E	F	G	H	J	K	L	T	U	W	AC	AD	AE	AF	AG	IN
11.00	12.00	6.87	10.00	0.50	11.00	0.50	3.87	2.12	2.12	0.31	4.93	3.00	2.12	7.90	6.5	3.50	4.25	3.40	mm
279.4	304.8	174.5	254.0	12.7	279.4	12.7	98.3	53.8	53.8	7.9	125.2	76.2	53.8	200.7	165.1	88.9	108.0	86.4	

\* THESE DIMENSIONS MUST BE MAINTAINED TO A TOLERANCE OF ±0.015, 0.4 MM.

MINIMUM REQUIRED ENCLOSURE SIZE IN(mm)

SWITCH RATING (AMPS)	HIGHT	WIDTH	DEPTH
260-400 AMPS	48.00 (1219,2)	18.00 (457,2)	13.00 (330,2)

PROJECT NAME: COMPOSITE OUTLINE  
7000 SERIES TS  
260 & 400 AMP W/ACC. 35

THIRD ANGLE PROJECTION

CHANGE LETTER: C

ECN NO.: 163622

BY: BK

APP: BK

DATE: 5/7/03

SCALE: ACAD

FILE: A4

SIZE: DS621165-004

SHEET: 1 OF 2

8	7	6	5	↓	4	3	2	1
---	---	---	---	---	---	---	---	---

**CONTROL PANEL & CONTROLS MOUNTING**

**SIDE VIEW (Left):**

- DOOR CONTROL CLEARANCE: 6.00 MIN. (152.4)
- CONTROL PANEL
- CONTROL ENVELOPE

**FRONT VIEW (Center):**

- OPTIONAL POWERMANAGER OR ADDITIONAL OPERATOR CONTROLS ESCUTCHEON MOUNTING
- USER CONTROLS & INDICATORS CUTOUT SEE DETAIL A FOR MOUNTING DATA
- CONTROL PANEL USER INTERFACE CUTOUT SEE DETAIL B FOR MOUNTING DATA
- 0.136" [3.5] DIA 6-32 X .313 [8.0] PEM STUD (6 PLACES)
- FOR OPERATOR CONTROLS OR DINRAIL MOUNTED ACCESSORIES (12 INCH LONG) [304.8]
- ADD-ON PANEL IF REQUIRED. USE (4) 0.25" [6.4] DIA 1/4-20 X 1.5" [38.1] PEM STUD FOR MOUNTING ADD-ON PANELS.
- STUDS SUPPLIED FOR ADD-ON PANEL AND DINRAIL MOUNTING (NOTE: ONLY ONE CAN BE SUPPLIED, BUT NOT BOTH)

**Dimensions (Front View):**

- 7.50 [190.6]
- 11.55 [293.3]
- 3.75 [95.3]
- 6.63 [168.5]

**Side View (Right):**

- CUSTOMER SUPPLIED DOOR CUTOUT LOCATION FOR REFERENCE ONLY
- CONTROL PANEL
- FOR OPERATOR CONTROLS OR DINRAIL MOUNTED ACCESSORIES (12 INCH LONG) [304.8]
- STUDS SUPPLIED FOR ADD-ON PANEL AND DINRAIL MOUNTING (NOTE: ONLY ONE CAN BE SUPPLIED, BUT NOT BOTH)

DEVICES ON  
MOUNTING RAILS  
(FOR SHIPPING ONLY)

7.63 [193.7]  
 2.50 [63.5]  
 3.75 [95.3]  
 6.62 [168.3]

CONTROL PANEL  
 ADD-ON PANELS  
 IF REQUIRED.  
 USE (4)  
 0.25" [6.4] DIA  
 1/4-20 X 1.5" [38.1]  
 PEM STUD FOR  
 MOUNTING ADD-ON  
 PANELS.

MOUNTING RAIL

R CONTROLS  
 AL MOUNTED  
 CCESSORIES  
 INCH LONG)  
 [304.8]

PLIED FOR  
 PANEL AND  
 L MOUNTING  
 LY ONE CAN  
 PLIED, BUT  
 NOT BOTH)

**CONTROL PANEL & CONTROLS MOUNTING DATA**

**DETAIL A -1 (FOR TYPE 1)**

0.136" [3.5] DIA & 6-32 X .625 [15.9] PEM STUD (4 PLACES)

10.50 [266.8]  
10.00 [254.1]

R0.25 [R6.4] (4 PLACES)

6.50 [165.2]  
6.00 [152.5]  
0.25 [6.4]

**DETAIL B -1 (FOR TYPE 1)**

7.63 [193.7]  
5.52 [140.3]

0.25" [6.4] DIA & 1/4-20 X 1.5 [38.1] PEM STUD (4 PLACES)

R0.31 [R7.9] (4 PLACES)

9.50 [241.4]  
5.32 [135.2]  
3.70 [94.0]  
4.81 [122.3]

**DETAIL A -2 (FOR TYPE 3R, 12 & 4)**

0.136" [5.2] DIA & 6-32 X .625 [15.875] PEM STUD (12 PLACES)

2.13 [54.0]  
2.13 [54.0]  
2.00 [50.9]  
2.13 [54.0]  
2.13 [54.0]

R0.25 [R6.4] (4 PLACES)

6.50 [165.2]  
2.13 [54.0]  
2.25 [57.2]  
6.00 [152.5]  
0.25 [6.4]  
10.00 [254.1]  
10.50 [266.8]

**DETAIL A -3 (FOR TYPE 3R, 12 & 4)**

0.25" [6.4] DIA & 1/4-20 X 1.5 [38.1] PEM STUD (4 PLACES MARKED 'A')

R0.31 [R7.9]

7.63 [193.7]  
5.52 [140.3]  
5.62 [142.7]

#25 .149" [3.8] DIA DRILL THRU FOR BEZEL MOUNTING 4 PLACES MARKED 'B'

**FRONT VIEW**

CUSTOMER SUPPLIED ENCLOSURE(WITHOUT DOOR VIEW)

FIELD CONNECTIONS TERMINAL BLOCK (TB) ASSEMBLY LOCATED ADJACENT TO RIGHT SIDE OF TRANSFER SWITCH

TRANSFER SWITCH (TS)

TB

**TOP VIEW**

CUSTOMER SUPPLIED

TRANSFER SWITCH

6 IN. [152.4] MIN DEPTH TO TRANSFER SWITCH FOR CONTROLS MOUNTED ON THE DOOR

4.00 [101.6]

FIELD CONNECTIONS TERMINAL BLOCK (TB) ASSEMBLY LOCATED ADJACENT TO RIGHT SIDE OF TRANSFER SWITCH

MOUNTING FLANGE

CONTROL PANEL

**FIELD TERMINAL BLOCK (TB) BRACKET MOUNTING DETAIL**

TB

0.38 [9.5]

7.50 [190.5]

9.00 [228.6]

280 [7.1] DIA-3 PLACES

MOUNTING FLANGE OF ENCLOSURE

3

2

1