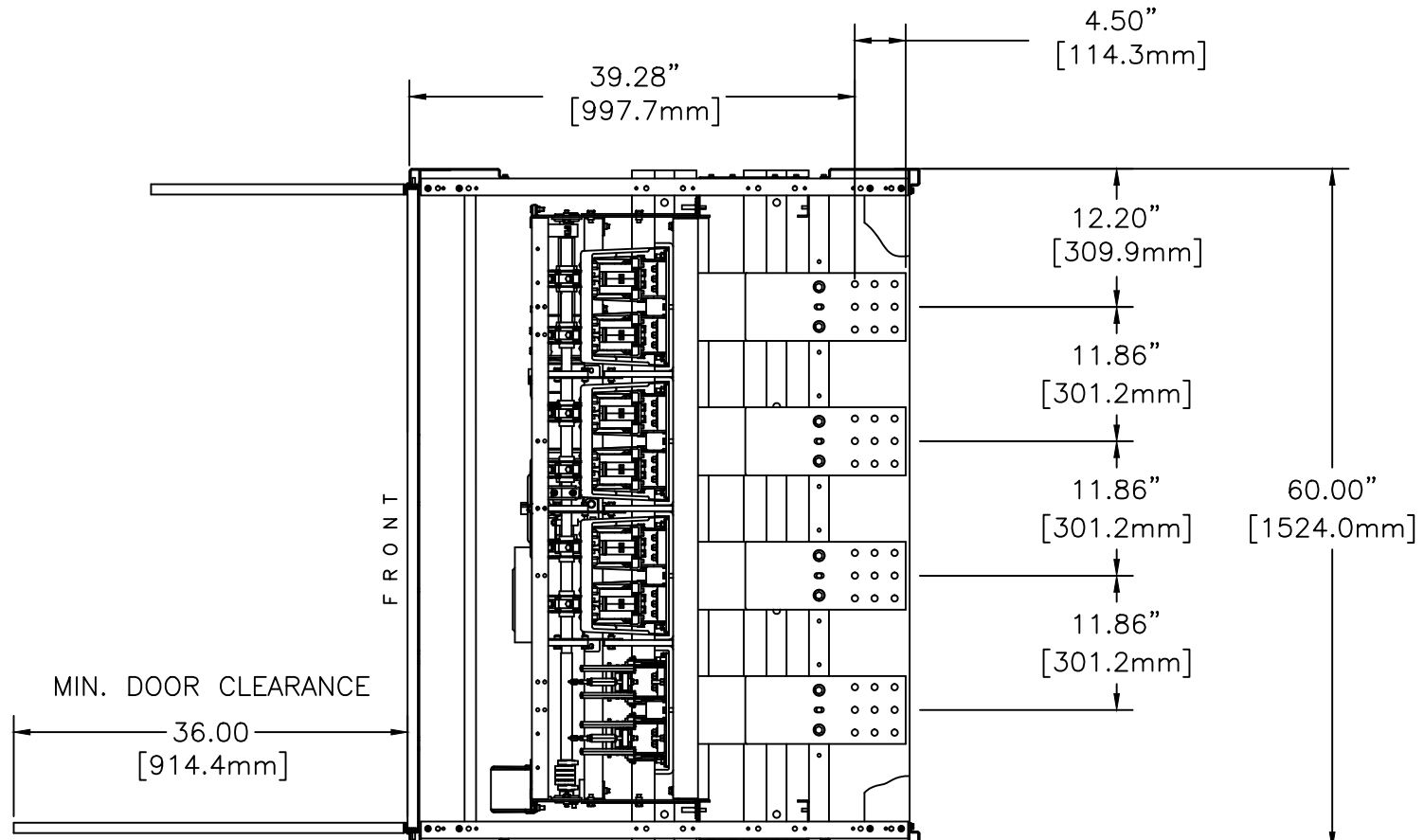
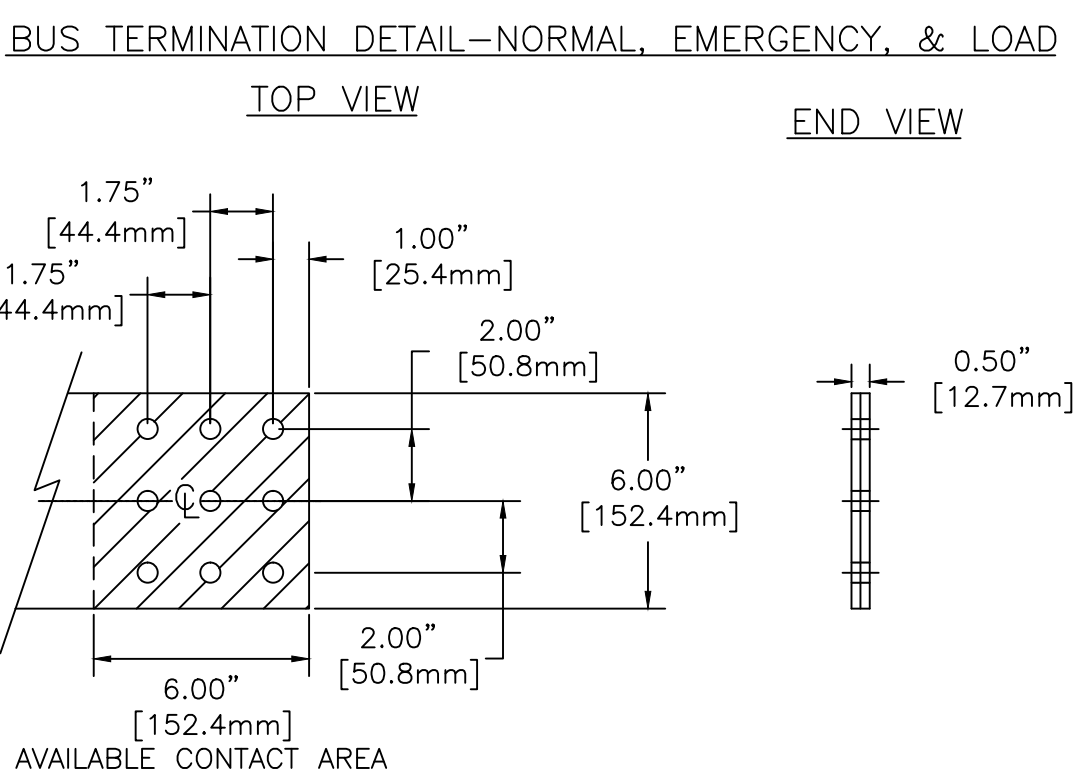


OUTLINE FOR ASCO® 4000 & 7000 SERIES 4000 AMPERE "G" FRAME (ATS,ACTS,ADTS) REAR CONNECTED TRANSFER SWITCHES OPEN TYPE BUSSED


TS SERIES	PREFIX
4000	4ATS
	4NTS
	4ACTS
	4NCTS
	4ADTS
7000	7ATS
	7NTS
	7ACTS
	7NCTS
	7ADTS

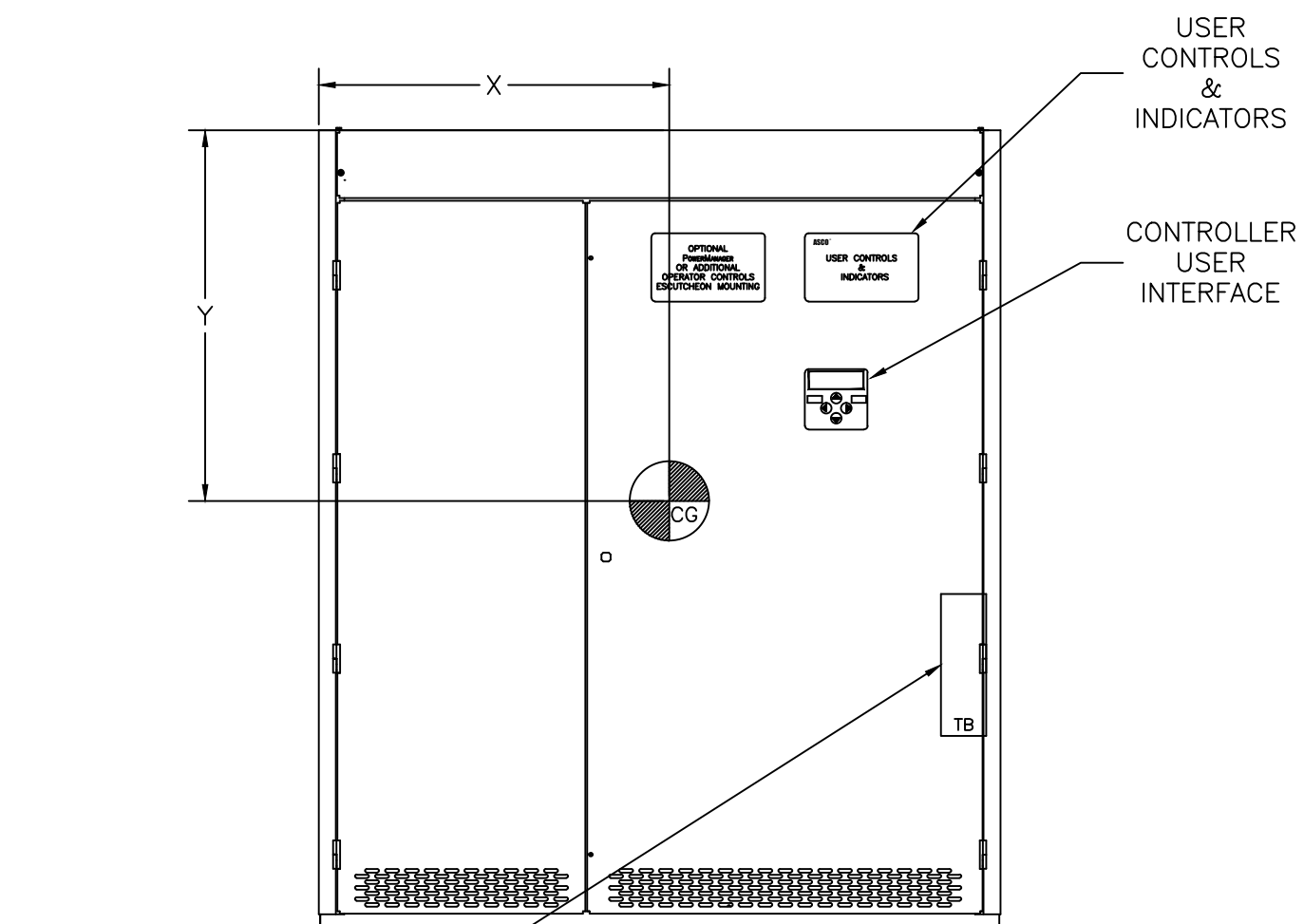


TOP VIEW

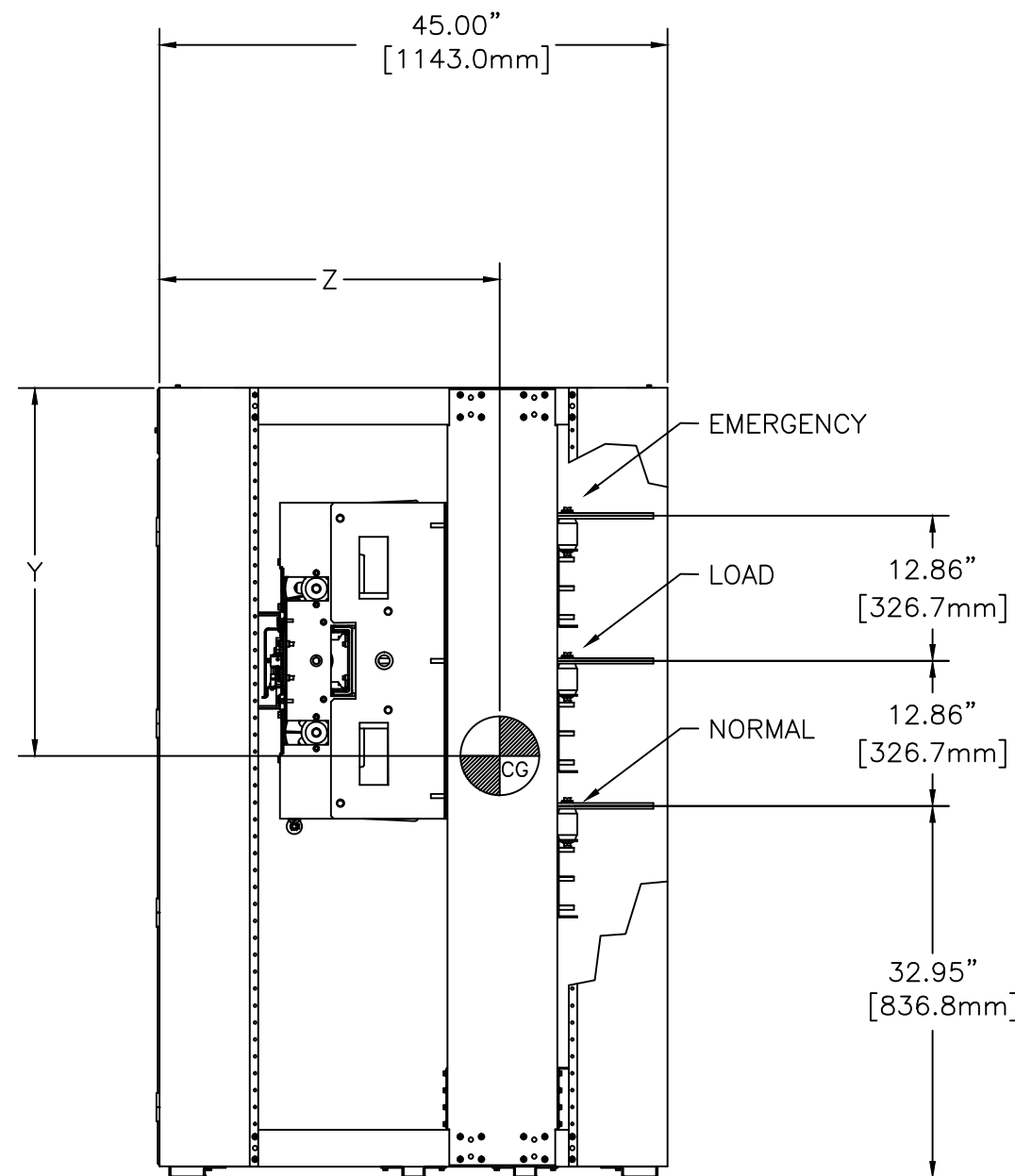


GENERAL NOTES

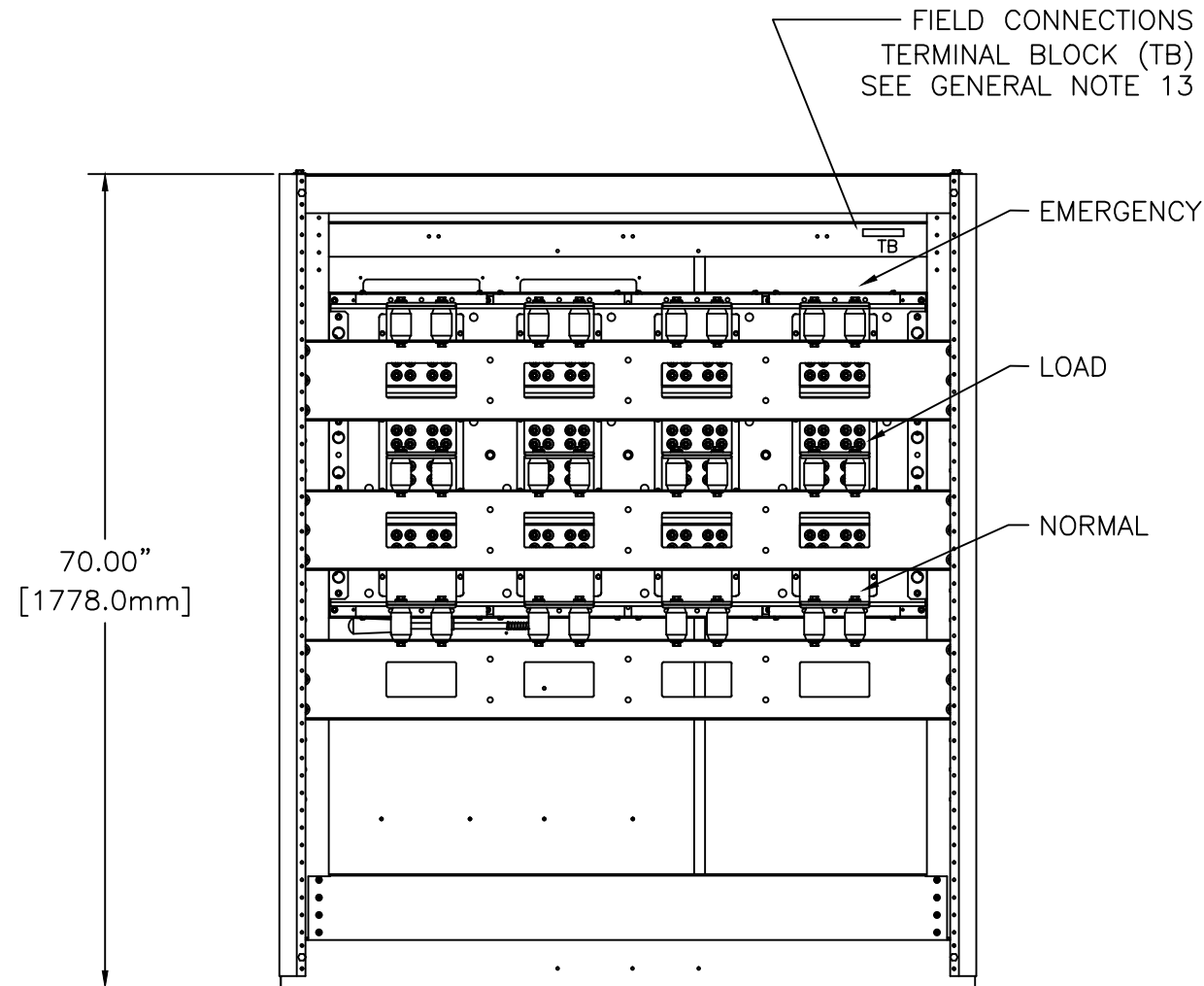
- WHEN INSTALLING CONNECT NORMAL, EMERGENCY, AND LOAD CONDUCTORS TO CLEARLY MARKED BUSS STAB
- ALL INTERNAL CONNECTIONS MADE AT FACTORY.
- OPERATOR'S MANUAL IS FURNISHED WITH EACH TRANSFER SWITCH. REFER TO THIS PUBLICATION PRIOR TO INSTALLATION AND OPERATION OF SWITCH.
- RECOMMENDED CLEARANCES: (FROM FINISHED ENCLOSURE)
FRONT: 48.00" (1220.0 mm)
REAR: 36.00" (914.0 mm)
- MINIMUM COMPARTMENT VOLUME TO BE NO LESS THAN 393,120 CU. IN.(6,425,496 CU. cm)
- MINIMUM HEIGHT NO LESS THAN 90" (2286 mm).
- REQUIRED VENTILATION IS AS FOLLOWS:
FRONT ABOVE TRANSFER SWITCH: 237 IN² (602 cm²)
FRONT BELOW TRANSFER SWITCH: 72 IN² (183 cm²)
REAR ABOVE TRANSFER SWITCH: 316 IN² (802 cm²)
REAR BELOW TRANSFER SWITCH: 316 IN² (802 cm²)
- NEUTRAL CONFIGURATIONS:
AN OPTIONAL FULL RATED NEUTRAL CONFIGURATION FOR EACH SOURCE AND THE LOAD MAY BE PROVIDED. WHEN EQUIPPED IT IS IN ONE OF THE FOLLOWING FORMATS AS SPECIFIED BY THE CATALOG NUMBER
NEUTRAL TYPE:
(A) SOLID (COPPER BUS) NEUTRAL
(B) SWITCHED NEUTRAL POLE
(C) OVERLAPPING NEUTRAL POLE (NOT AVAILABLE ON ACTS/ADTS UNITS).
- ALL CONTROLS ARE MOUNTED AND PRE-WIRED.
- UNIT IS DESIGNED FOR REAR CABLE ENTRY.
- THE STANDARD SWITCH CONFIGURATION IS FOR EMERGENCY SOURCE ON TOP AND NORMAL SOURCE ON BOTTOM. OPTIONALLY THE SWITCH MAY BE SUPPLIED WITH REVERSE SOURCES. (REFER TO THE WIRING DIAGRAM FURNISHED WITH EACH TRANSFER SWITCH TO DETERMINE THE TERMINATION POSITIONS).
-  CENTER OF GRAVITY-SEE TABLE BELOW.
- CUSTOMER TERMINAL BLOCKS:
FOR ALL 7000 SERIES UNITS THE TB WILL BE MOUNTED ON THE LOWER RIGHT INSIDE OF ENCLOSURE.
FOR 4000 SERIES UNITS TB WILL BE MOUNTED ON THE TRANSFER SWITCH FRAME AS INDICATED.



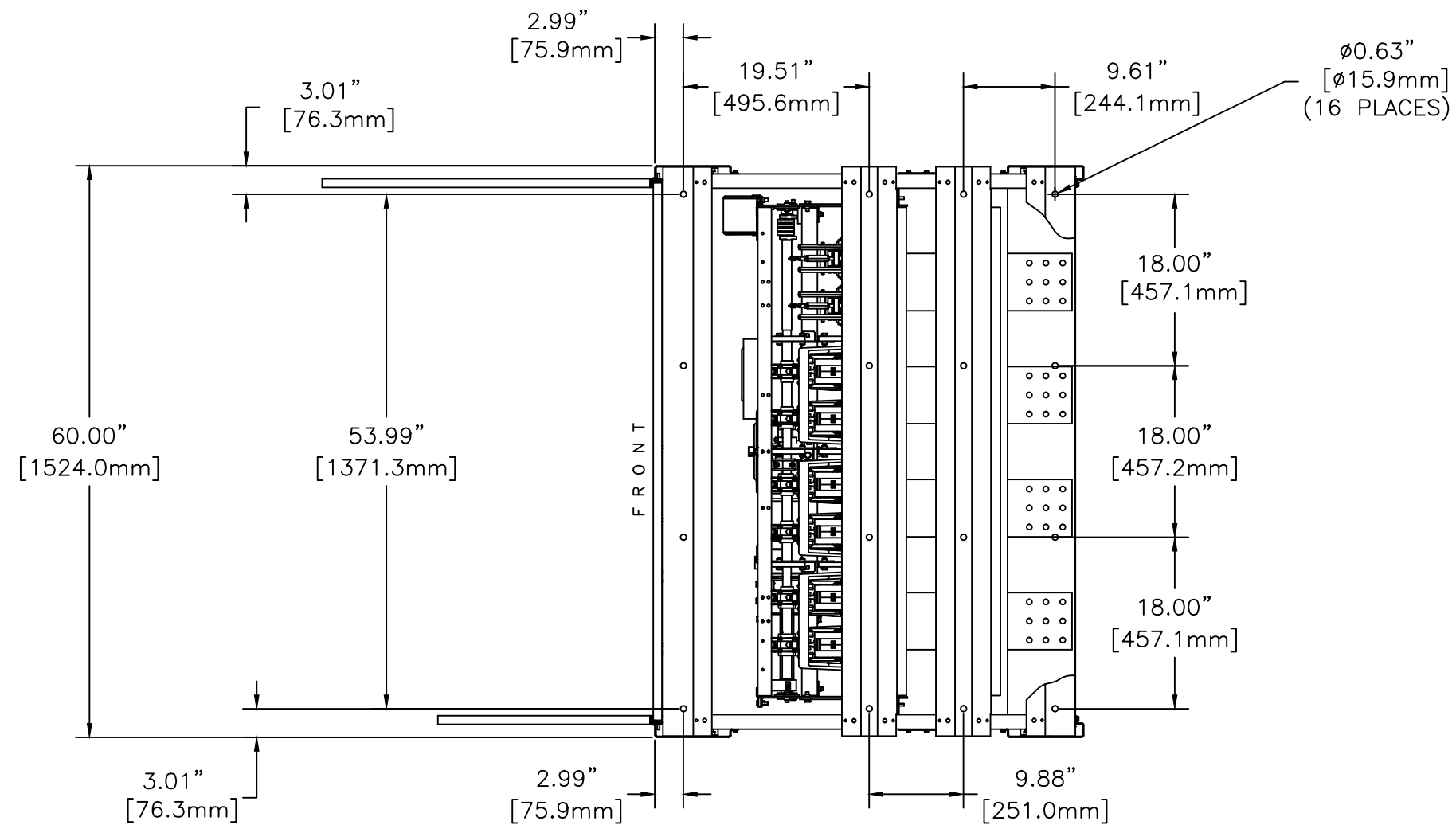
FRONT VIEW



RIGHT SIDE VIEW



REAR VIEW



BOTTOM VIEW

AMP SIZE	POLES	WEIGHTS LBS(KG)	CENTER OF GRAVITY		
			X IN(mm)	Y IN(mm)	Z IN(mm)
4000	2	1213(550)	29.6(752)	29.3(744)	21.9(556)
	B2	1388(630)	28.6(726)	29.6(752)	21.4(544)
	C2	1372(622)	28.6(726)	29.6(752)	21.4(544)
	3	1388(630)	28.6(726)	29.6(752)	21.4(544)
	B3	1564(709)	29.7(754)	29.4(747)	21.8(554)
	C3	1547(709)	29.7(754)	29.4(747)	21.8(554)

B

275750

JA

RN

11/13/18

SEE ECN

244279

WK

BK

09/10/13

SEE ECN

224423

BK

WK

09/17/09

ISSUE

PROJECT NAME:

OUTLINE

4000/7000 SERIES,ATS,ACTS,ADTS

4000 AMP, G FRAME, OPEN TYPE / BUSS

REV. TO SHEET

ECN NO.

BY

APP.

DATE

MANUFACTURING TOLERANCES TO BE IN ACCORDANCE WITH ASCO PROCEDURE MP-1-003. FOR PLASTIC PARTS SEE MP-1-005

ASSEM. REF. NO.

COMPUTER GENERATED DRAWING

DRAWN BY

DJB

DATE

09/17/09

CHECKED

BK

DATE

09/17/09

PROJECT APPROVAL

WK

DATE

09/17/09

FINAL APPROVAL

DATE

SCALE

1/16 = 1

SIZE

DS

DWG. NO.

844459-003

DRAWING B

ECN NO.

275750

SHEET

1 OF 1

THIRD ANGLE PROJECTION

ASCO®

ASCO POWER TECHNOLOGIES, L.P.

FLORHAM PARK, NEW JERSEY 07932 U.S.A.