

D

C

B

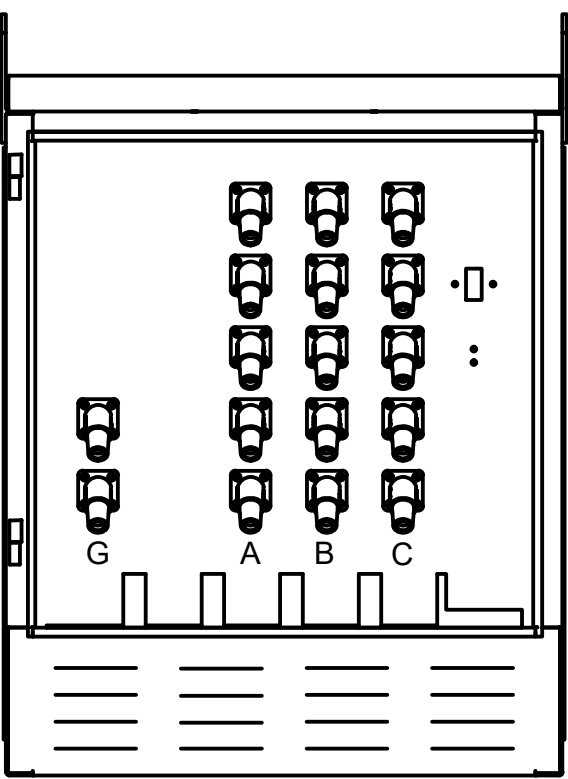
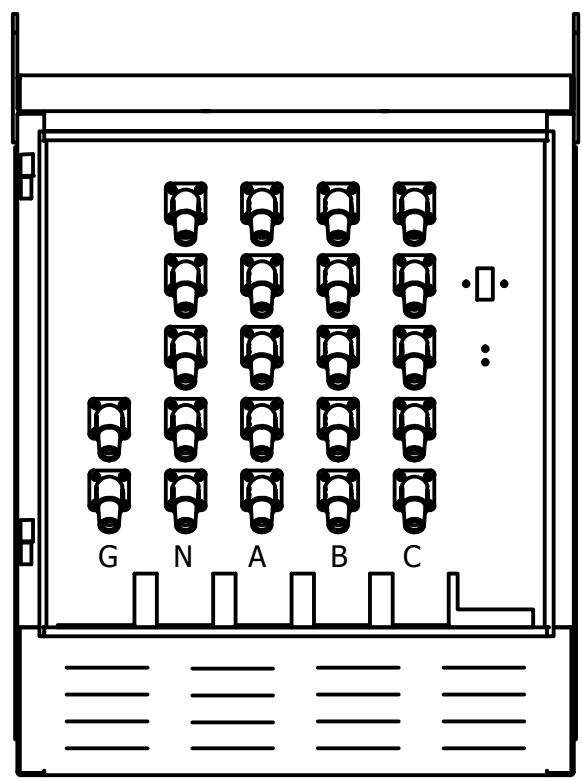
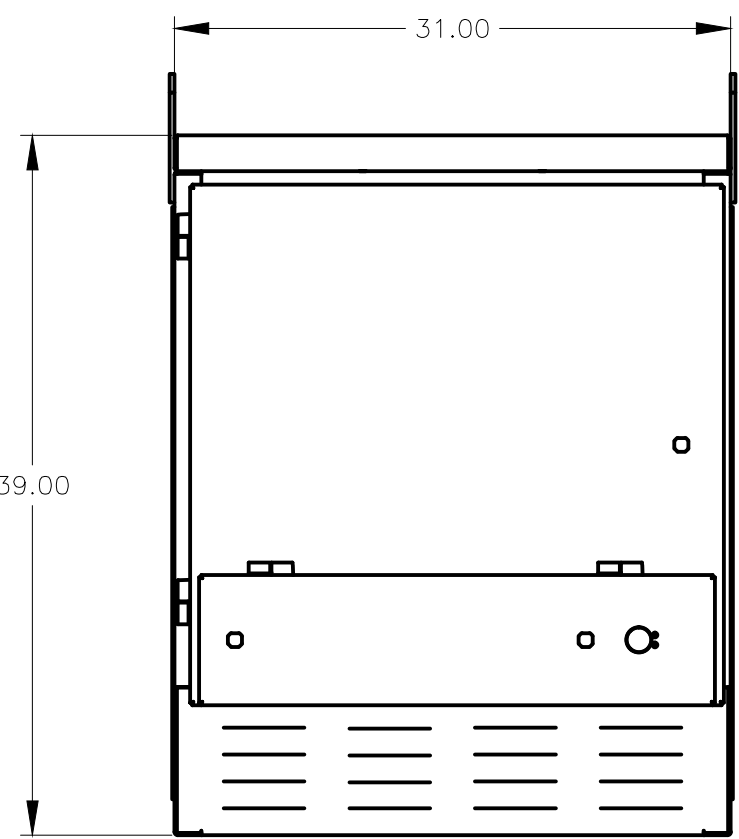
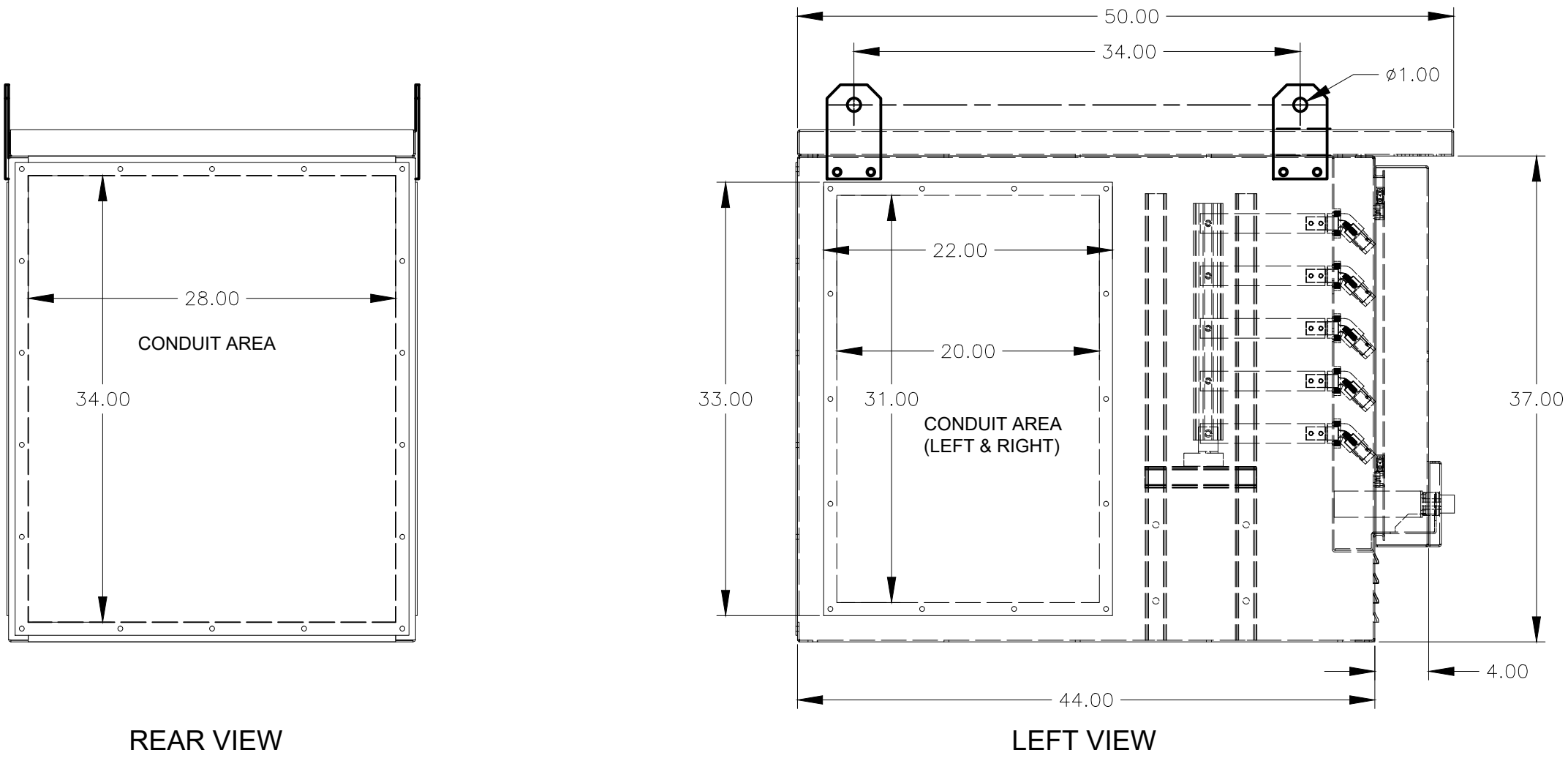
A

D

C

B

A



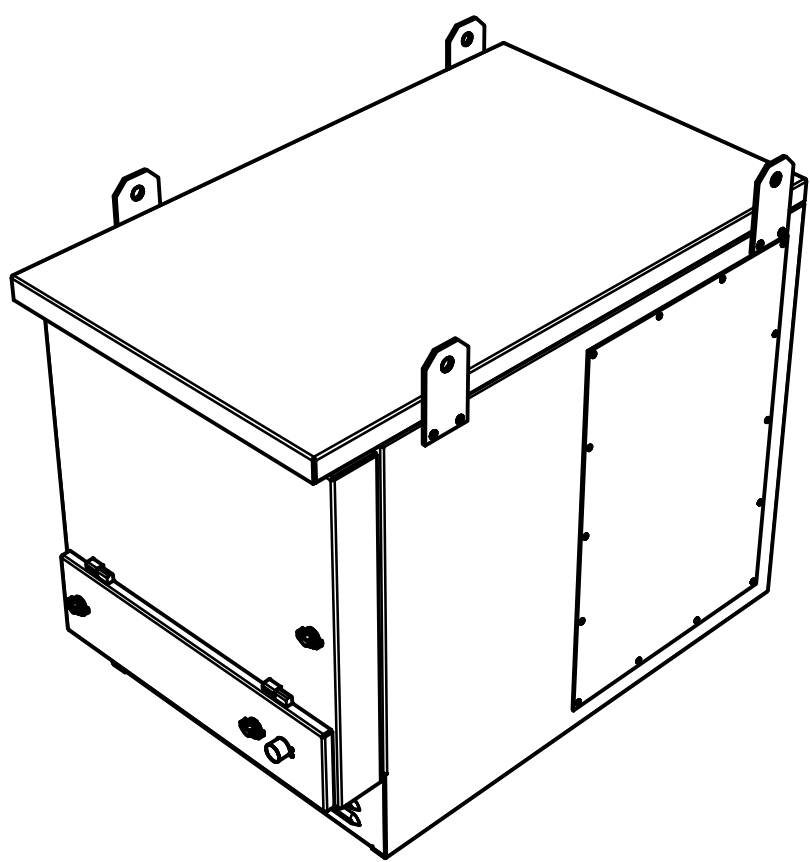
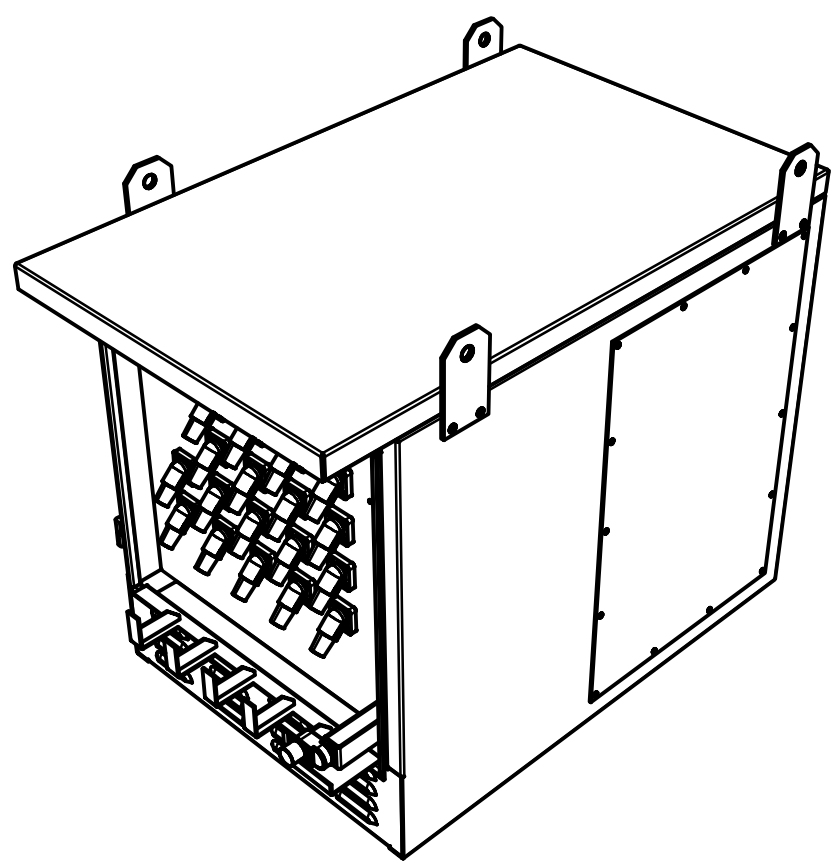
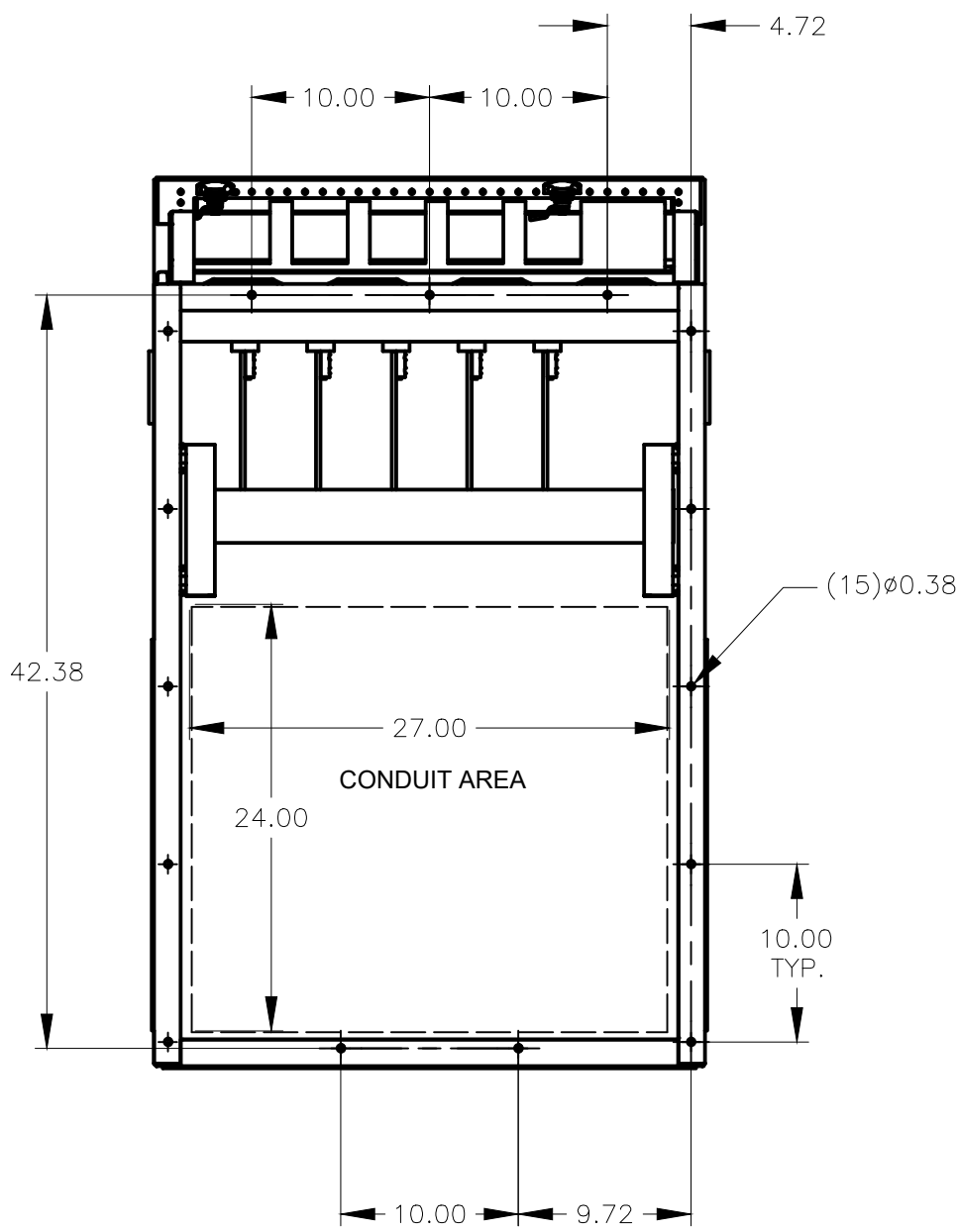
- NOTES:**
- INLET PANELS:**
 - FOR USE ONLY FOR CONNECTION OF A GENERATOR TO THE SOURCE TERMINALS OF A TRANSFER SWITCH SUCH THAT THE INLETS ARE ENERGIZED FROM THE GENERATOR
 - ETL LISTED TO UL 1008 STANDARDS AS A TRANSFER SWITCH ACCESSORY
 - 16 SERIES RECESSED MALE CONNECTORS
 - OUTLET PANELS:**
 - FOR CONNECTION OF A LOAD BANK TO A POWER SOURCE
 - ETL LISTED TO UL 891 STANDARDS
 - 16 SERIES RECESSED FEMALE CONNECTORS WITH FLIP COVERS
 - PANEL RATINGS:**
 - 600VAC MAX, 50-60HZ, 2000A, 3PH/3W OR 3PH/4W
 - SHORT CIRCUIT CURRENT RATING:**
 - 100K RMS SYMMETRICAL AMPS, 600 VAC MAX.
 - ENCLOSURE:**
 - TYPE 3R CONSTRUCTION, FOR OUTDOOR USE ONLY
 - REMOVABLE HINGED DOOR WITH PADLOCK PROVISIONS
 - FINISH, ANSI 61 GRAY POWDER COAT
 - REMOVABLE GASKETED SIDE ACCESS PANELS FOR ADDITIONAL CONDUIT ENTRY AREAS.**
 - RECOMMENDED CLEARANCES:**
 - FRONT 24 TO 30 INCHES
 - REMOVABLE GROUNDING STRAP(S) ARE INCLUDED CONNECTING THE GREEN CAMLOCKS TO THE ENCLOSURE.**
 - NO NEUTRAL TO GROUND BONDING PROVISIONS INCLUDED.**
 - CAMLOCK CONNECTORS ARE SERIES 16 COMPATIBLE. 400A RATED.**

- INSTALLATION:**
- SURFACE TO WHICH THE PANEL IS TO BE INSTALLED AND THE INSTALLATION METHOD / HARDWARE MUST BE CAPABLE OF SUPPORTING THE WEIGHT OF THE PANEL AS WELL AS THE WEIGHT OF THE TEMPORARY CABLES TO BE ATTACHED TO IT. WEIGHTS SHOWN IN TABLE BELOW.
 - INSTALLATION IS TO BE DONE BY QUALIFIED PERSONNEL IN ACCORDANCE WITH LOCAL AND NATIONAL CODES AND GOOD ENGINEERING PRACTICES.
 - PANEL MUST BE LEVEL AND PLUMB TO ALLOW FOR PROPER DRAINAGE / WATER RUNOFF.

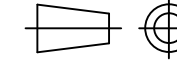
| AMPS | SYSTEM CONFIGURATION | MATERIAL | | WEIGHT (lbs) | | CAMLOCK QUANTITY | | | LUG QUANTITY | | | LUG RANGE OF AL-CU CONDUCTOR SIZES |
|-------|----------------------|----------|--------|--------------|-----|------------------|---------|--------|--------------|---------|--------|------------------------------------|
| | | ALUM. | SS | ALUM. | SS | PHASE | NEUTRAL | GROUND | PHASE | NEUTRAL | GROUND | |
| 2000A | 3P + G | 1/8" | 11 GA. | 192 | 274 | 5 | 0 | 2 | 6 | 0 | 2 | #2 TO 600 MCM |
| | 3P + N + G | | | 204 | 292 | 5 | 5 | 2 | 6 | 6 | 2 | |

- CABLING:**
- ALL UNITS SUPPLIED WITH ONE SET OF MECHANICAL (SCREW TYPE) LUGS AS SHOWN IN TABLE ABOVE.
 - LUGS ARE UL LISTED, TIN PLATED, ALUMINUM ALLOY COMPATIBLE WITH COPPER OR ALUMINUM CABLES.
 - LUG SCREWS ARE TIN PLATED, TORQUE TO 19 FT-LBS PER UL4868.
 - LUGS ARE ATTACHED TO COPPER PLATED OR FLASHED BUS WITH FACTORY SUPPLIED BOLTS, TORQUED TO 30 FT-LBS.

- STANDARD FEATURES:**
- PROVISIONS FOR KIRK™ OR CASTELL™ TRAPPED KEY INTERLOCK. KEY AND TUMBLER NOT PROVIDED.
 - PHASE ROTATION MONITOR FOR TEMPORARY POWER CONNECTION.
 - TAMPER RESISTANT DOOR WHILE IN USE.
 - TWO WIRE AUTO START TERMINALS.
- OPTIONAL ACCESSORIES:**
- ACC. 147QC - COLOR CODING FOR CANADIAN CAMLOK CONNECTORS
- SINGLE PHASE: BLK (LINE 1), RED (LINE 2)
- THREE PHASE: RED (PHASE A), BLK (PHASE B), BLU (PHASE C), NEUT. WHEN REQUIRED (WHT)



| CATALOG NUMBER | | | | | | | | | | | EXPLANATION OF CATALOG NUMBER CODES | | | | | | | | | | | | |
|----------------|--------------|----------------|--------|--------------|-------|------|-------------|-------|--------------------|----------------|-------------------------------------|----------------|-----------------|-------|------------------|---------------|---------------|-----------------|---------------|--|-----------------|------|--|
| CATALOG TYPE | INPUT/OUTPUT | CONNECTOR TYPE | GROUND | NEUTRAL TYPE | POLES | AMPS | VOLT CODE | BLANK | OPTIONAL ACCESSORY | ENCLOSURE CODE | INPUT/OUTPUT | CONNECTOR TYPE | GROUND TYPE | | NEUTRAL TYPE | | VOLTAGE CODES | | | OPTIONAL ACCESSORY | ENCLOSURE CODES | | |
| | | | | | | | | | | | CODE | CODE | CODE | COLOR | CODE | COLOR | CODE | NOMINAL VOLTAGE | COLOR CODE | CODE | CODE | TYPE | DESCRIPTION |
| 3QC | N U | C | A N | O A | 3 | 2000 | F N R | 0 | 0 X Z | F S | N=INPUT U=OUTPUT | C=CAMLOCK | A=100% N=25% | GREEN | 0=NONE A=100% | NONE WHITE | F | 240 | BLK, RED, BLU | 0=STANDARD X=ACCESSORY Z=SPECIAL | F | 3R | SECURE ENCLOSURE OUTDOOR, RAINPROOF, SLEET & ICE RESISTANT (ALUMINUM) |
| | | | | | | | | | | | | | | | | | N | 480 | BRN, ORG, YEL | | S | 3RX | SECURE ENCLOSURE OUTDOOR, RAINPROOF, SLEET & ICE RESISTANT (316 STAINLESS STEEL) |
| | | | | | | | | | | | | | | | | | R | 600 | BLK, BLK, BLK | | | | |

| | | | | | |
|---|---|---------|-----|-----|----------|
|  | D | 287138 | MKA | JPB | 11/23/20 |
| | | SEE ECN | | | |
| | C | 284487 | MKA | JPB | 05/12/20 |
| | | SEE ECN | | | |
| | B | 272961 | JPB | JPB | 06/13/18 |
| | | SEE ECN | | | |
| | A | 271386 | MKA | JPB | 03/05/18 |
| | | SEE ECN | | | |
| | — | 270603 | JPB | JPB | 01/08/18 |
| | | ISSUE | | | |
| PROJECT NAME: | | | | | |
| REV. TO SHEET | | | | | |
| ECN NO. | | | | | |
| BY | | | | | |
| APP. | | | | | |
| DATE | | | | | |
| PADMOUNT | | | | | |
| QUICK CONNECT PANEL | | | | | |
| 2000 AMPS | | | | | |
| 600 VAC MAX, 3PH/3W OR 3PH/4W | | | | | |
| BY | | | | | |
| DATE | | | | | |
| MANUFACTURING TOLERANCES TO BE IN ACCORDANCE WITH ASCO PROCEDURE MP-1-003. FOR PLASTIC PARTS SEE MP-1-005 | | | | | |
| ASSEM. REF. NO. | | | | | |
| PROPERTY OF ASCO POWER TECHNOLOGIES; USE PERMITTED FOR OUR WORK ONLY. ALL RIGHTS OF DESIGN OR INVENTION ARE RESERVED. | | | | | |
| COMPUTER GENERATED DRAWING | | | | | |
| SCALE 3/32" = 1" SIZE DS | | | | | |
| DWG. NO. 1184353 | | | | | |
| DRAWING D | | | | | |
| ECN 287138 | | | | | |
| SHEET 1 OF 1 | | | | | |