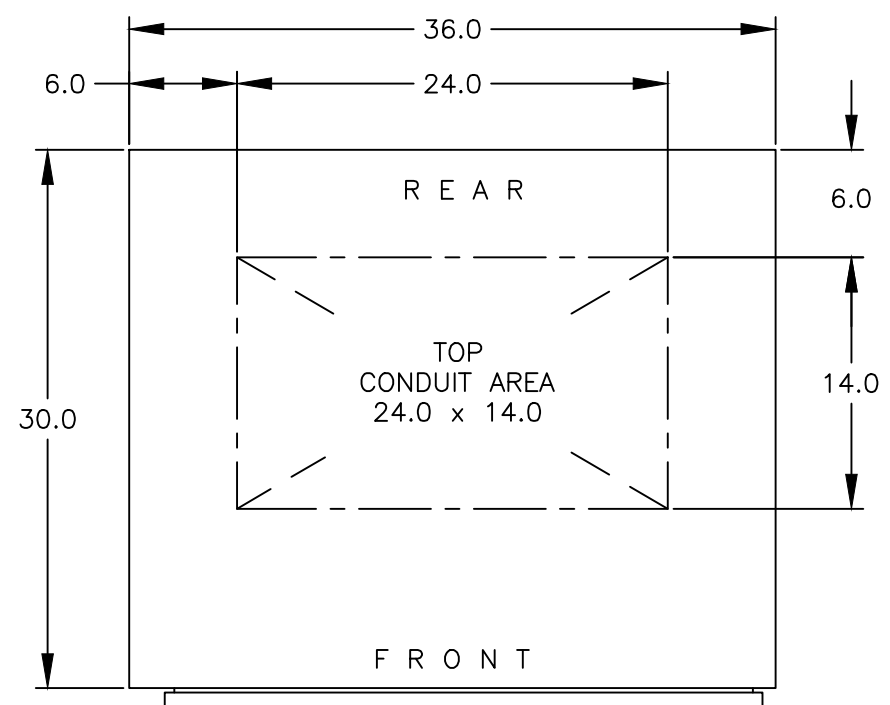
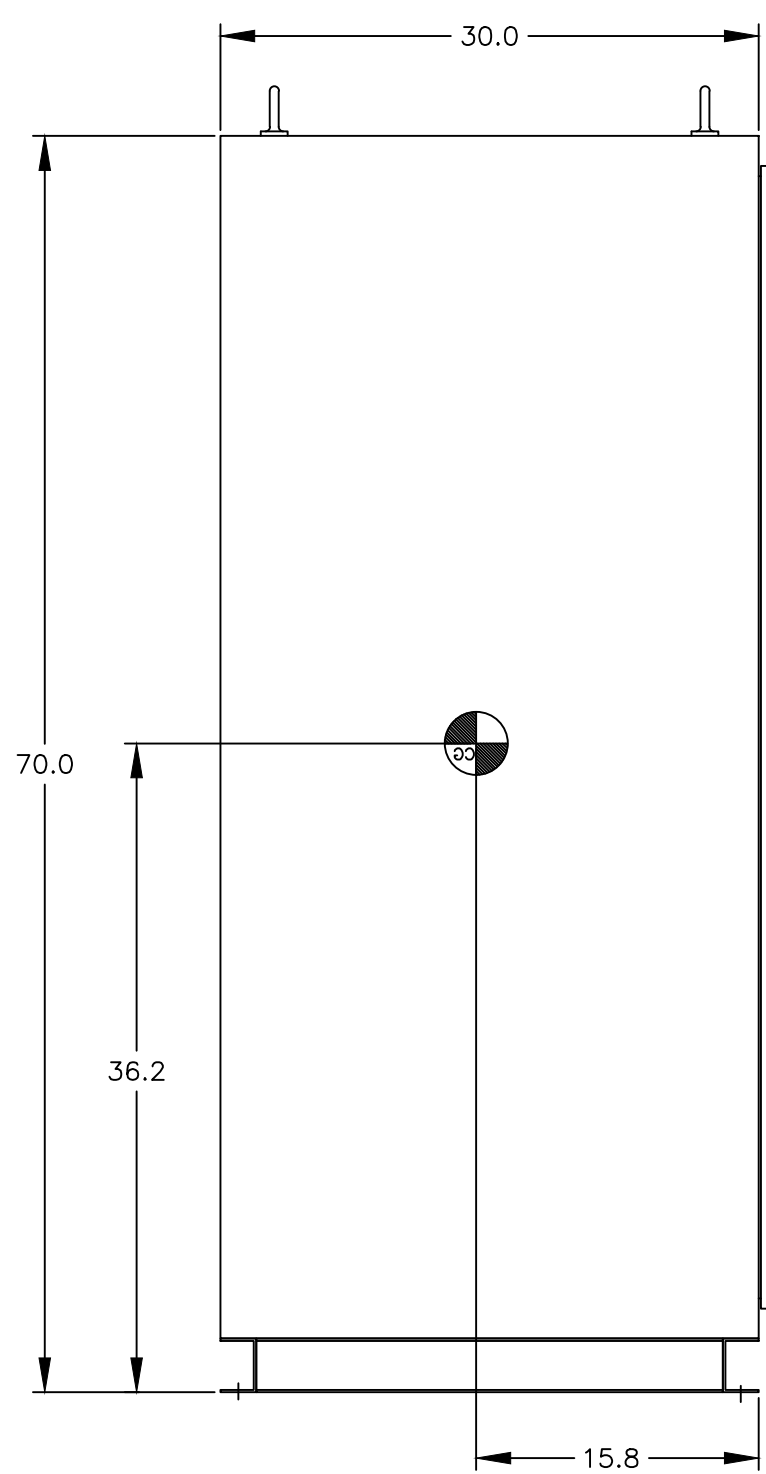


D

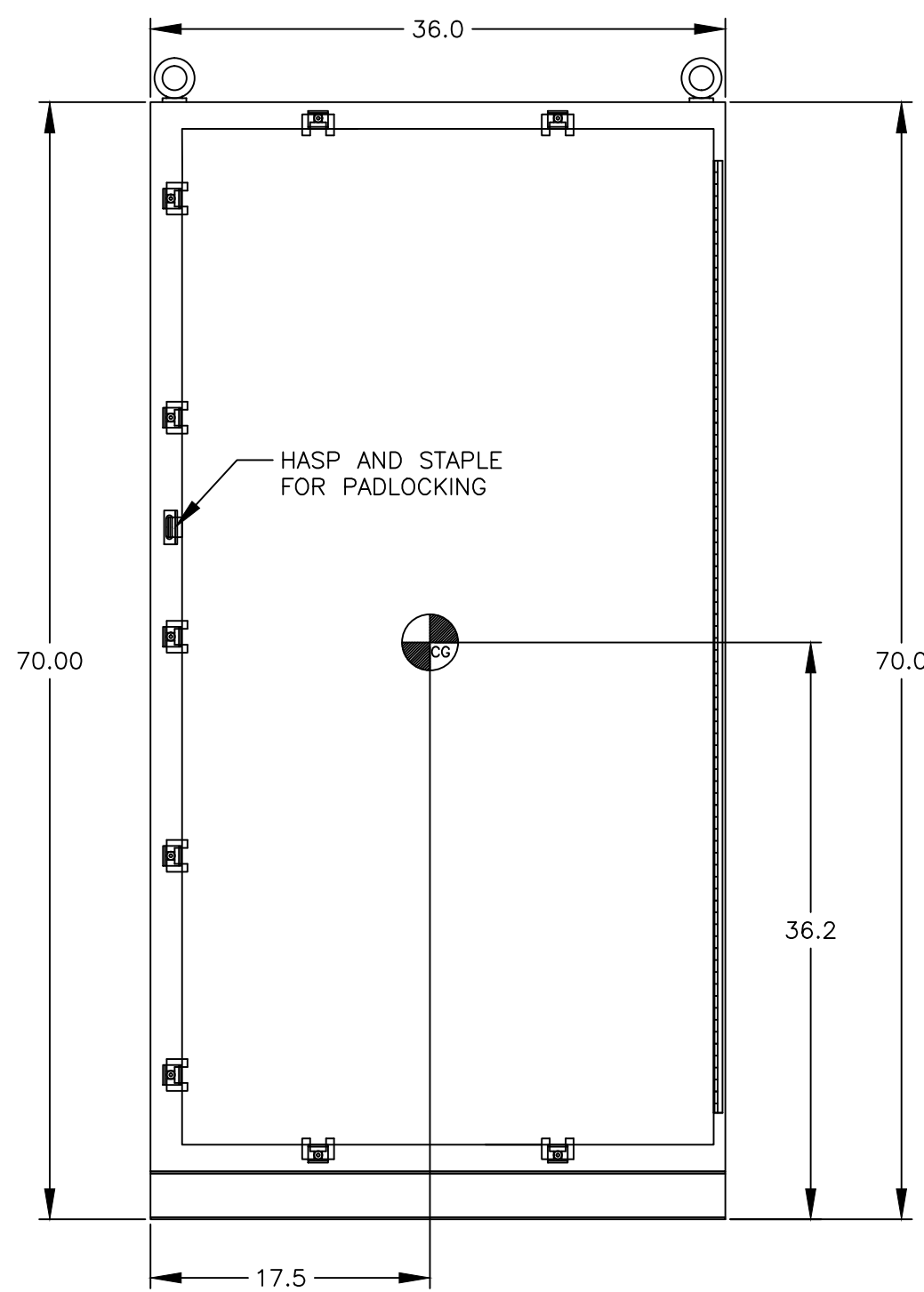
D



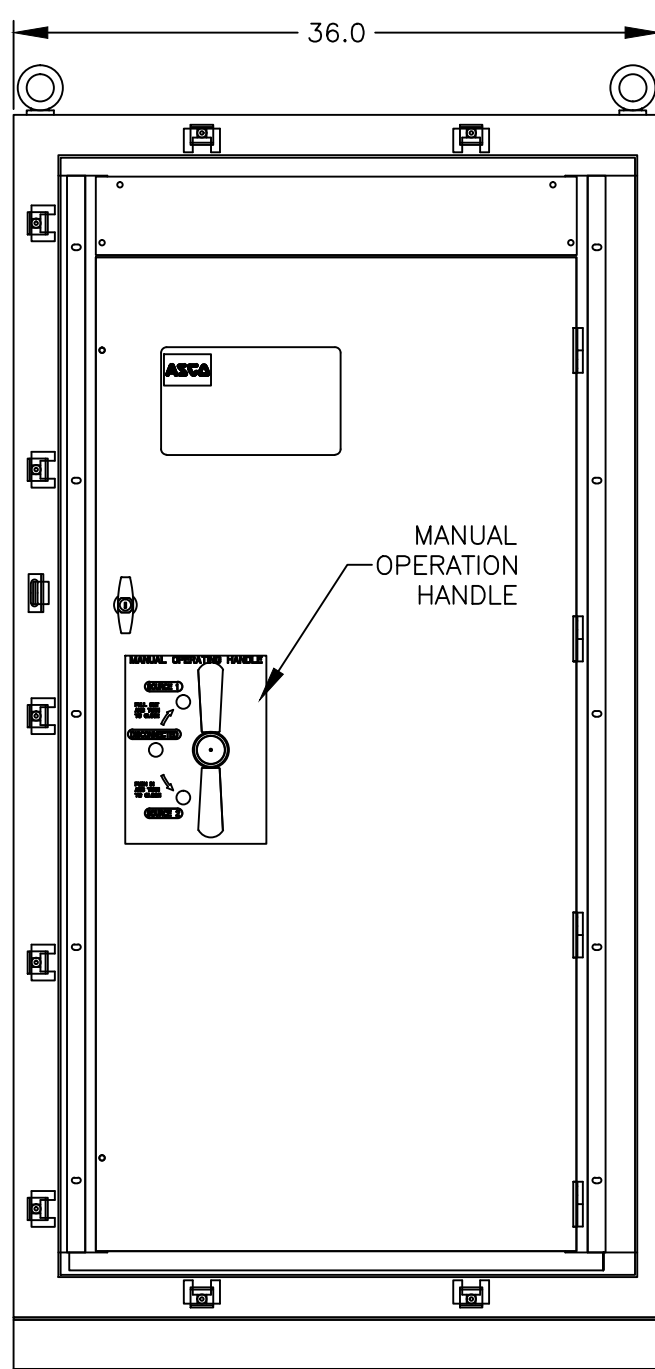
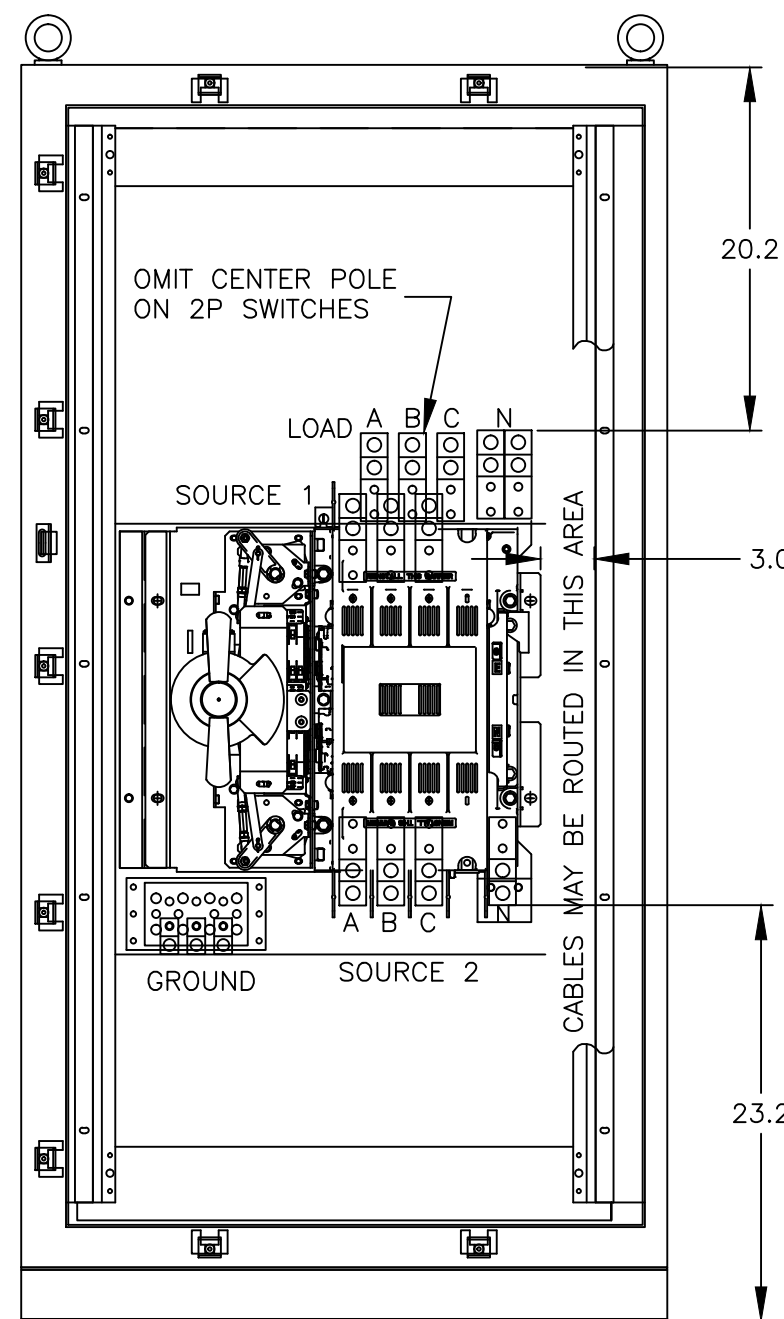
"TOP VIEW"



"SIDE VIEW"



"FRONT VIEW"

"FRONT VIEW"
"WITHOUT DOOR""FRONT VIEW"
"WITHOUT DOOR"

GENERAL NOTES

- FLOOR MOUNTED ENCLOSURE.
TYPE 4 CONSTRUCTED FROM CODE GAUGE STEEL.
FINISH: TYPE 4, ANSI 61 GRAY POLYESTER SEMI GLOSS ELECTROSTATIC POWDER.
TYPE 4X EXTERIOR MANUFACTURED FROM CODE GAUGE STAINLESS STEEL.
(P) EXTERIOR CONSTRUCTED FROM CODE GAUGE TYPE 304 STAINLESS STEEL.
(V) EXTERIOR CONSTRUCTED FROM CODE GAUGE TYPE 316 STAINLESS STEEL.
- EXTERIOR DOORS HAVE PADLOCKABLE HASP & STAPLE.
- DESIGNED FOR FRONT ACCESS.
- RECOMMENDED CLEARANCES: FRONT: 38.00" INCHES, REAR: NONE.
- CENTER OF GRAVITY
- APPROXIMATE WEIGHT: 1000 LBS.

TRANSFER SWITCH, 150A – 600A

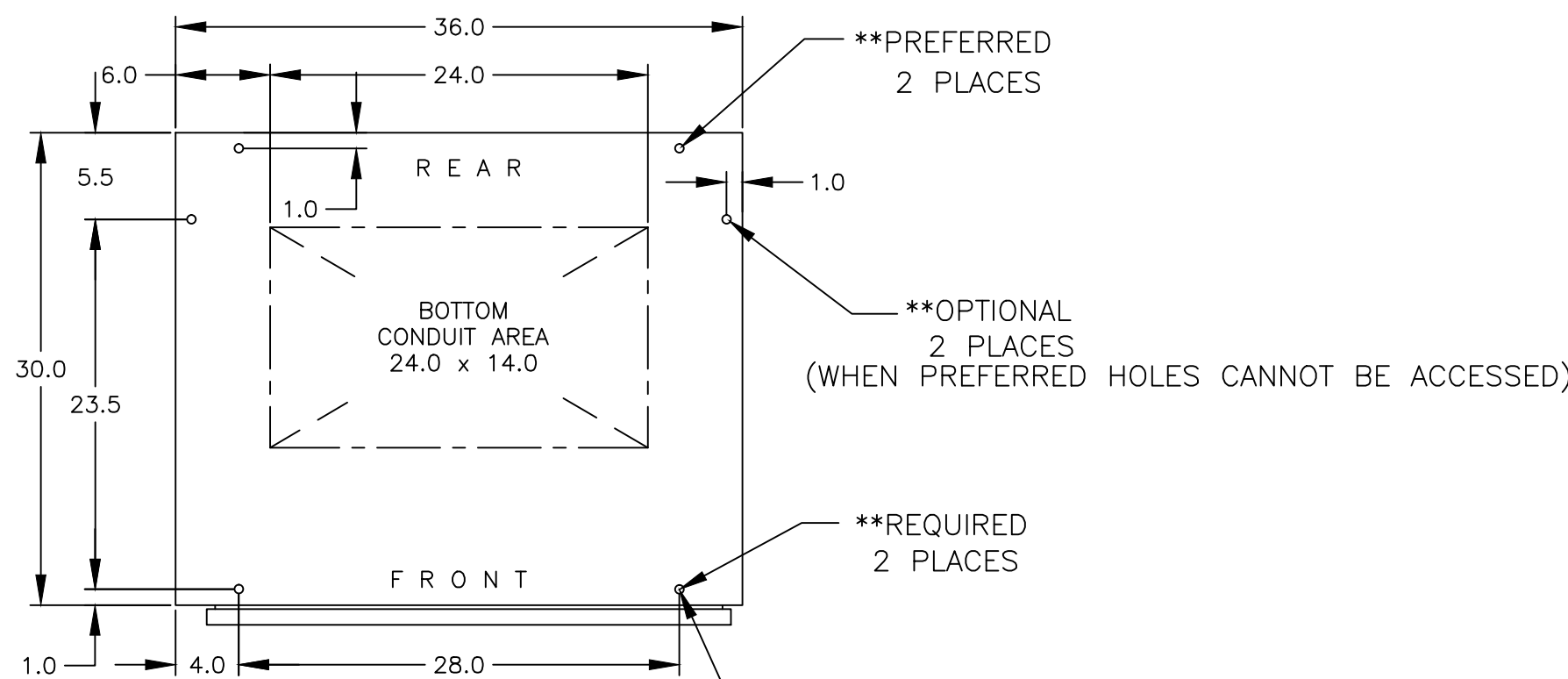
- J FRAME MANUAL TRANSFER SWITCH 150A – 600A.
- TRANSFER SWITCH RATING: 150 AMPS, 200 AMPS, 260 AMPS, 400 AMPS, 600AMPS.
SHORT CIRCUIT RATING WHEN PROTECTED BY A CIRCUIT BREAKER
TIME RESPONSE, MAXIMUM 0.05 SECONDS:
42,000 RMS SYM @ 480V.
- A FULL RATED NEUTRAL CONNECTION FOR EACH SOURCE AND THE LOAD IS OPTIONAL.
WHEN PROVIDED IT IS IN ONE OF THE FOLLOWING FORMATS.
A. SOLID NEUTRAL
B. SWITCHED NEUTRAL POLE
- UL 1008

TERMINATIONS 150A – 400A

- SUPPLIED WITH MECHANICAL (SCREW TYPE) LUGS FOR CU/AL CABLE.
SOURCE 1: (1) #4 – 600MCM OR (2) 1/0 – 250MCM PER PHASE & NEUTRAL
LOAD: (1) #4 – 600MCM OR (2) 1/0 – 250MCM PER PHASE & NEUTRAL
SOURCE 2: (1) #4 – 600MCM OR (2) 1/0 – 250MCM PER PHASE & NEUTRAL
GROUND: (3) #4 – 600MCM OR (6) 1/0 – 250MCM
A. SUITABLE WIRE BENDING SPACE IS PROVIDED AS PER NEC.
- OPTIONAL LUGS MAY BE SUPPLIED.


TERMINATIONS 600A

- SUPPLIED WITH MECHANICAL (SCREW TYPE) LUGS FOR CU/AL CABLE.
SOURCE 1: (2) #2 – 600MCM PER PHASE & NEUTRAL
LOAD: (2) #2 – 600MCM PER PHASE & NEUTRAL
SOURCE 1: (2) #2 – 600MCM PER PHASE & NEUTRAL
GROUND: (6) #2 – 600MCM
A. SUITABLE WIRE BENDING SPACE IS PROVIDED AS PER NEC.



"PLAN VIEW"

A	284765	LAM	RN	6/1/20
—	271849	VAK	RN	04-11-18
—	NEW ISSUE			

PROJECT NAME:				REV. TO SHEET	ECN NO.	BY	APP.	DATE
OUTLINE				MOUNTING				
JMTS 150A – 600A MANUAL TRANSFER SWITCH								
TYPE 4/4X 70 X 36 X 30								
BY		DATE		<div>MANUFACTURING TOLERANCES TO BE IN ACCORDANCE WITH ASCO PROCEDURE MP-1-003. FOR PLASTIC PARTS SEE MP-1-005.</div> <div>ASSEM. REF. NO.</div> <div>COMPUTER GENERATED DRAWING</div>				
DRAWN BY		VAK 04-05-18						
CHECKED		RN						
PROJECT APPROVAL		PROPERTY OF ASCO POWER TECHNOLOGIES, USE PERMITTED FOR OUR WORK ONLY. ALL RIGHTS OF DESIGN OR INVENTION ARE RESERVED.						
FINAL APPROVAL		<div><div>ASCOPower Technologies, L.P. FLORHAM PARK, NEW JERSEY 07932 U.S.A.</div><div>SCALE 3/32" = 1" SIZE DS</div><div>DWG. NO. 977099-012</div><div>DRAWING REV. A ECN NO. 284765</div><div>SHEET 1 OF 1</div></div>						