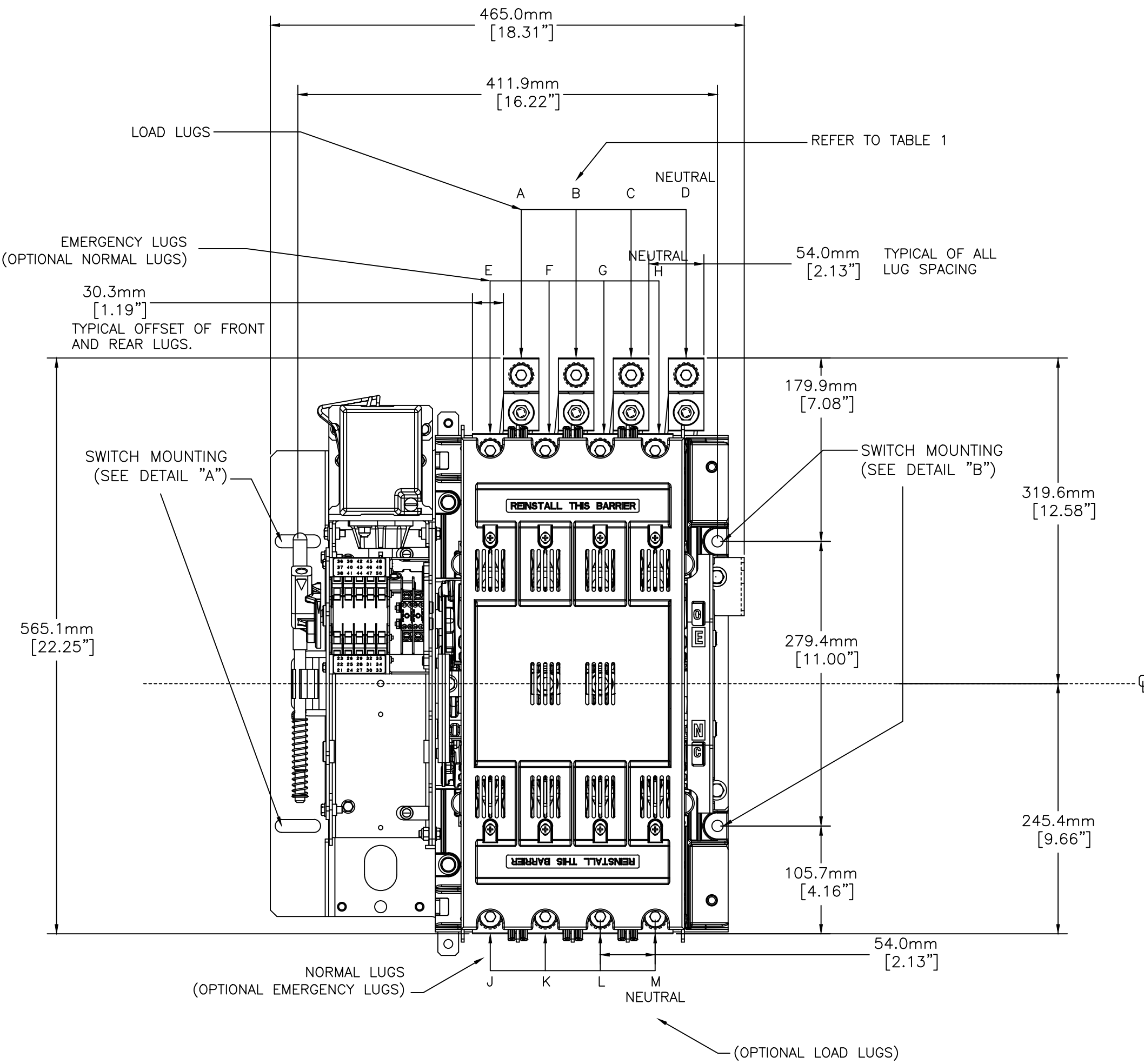
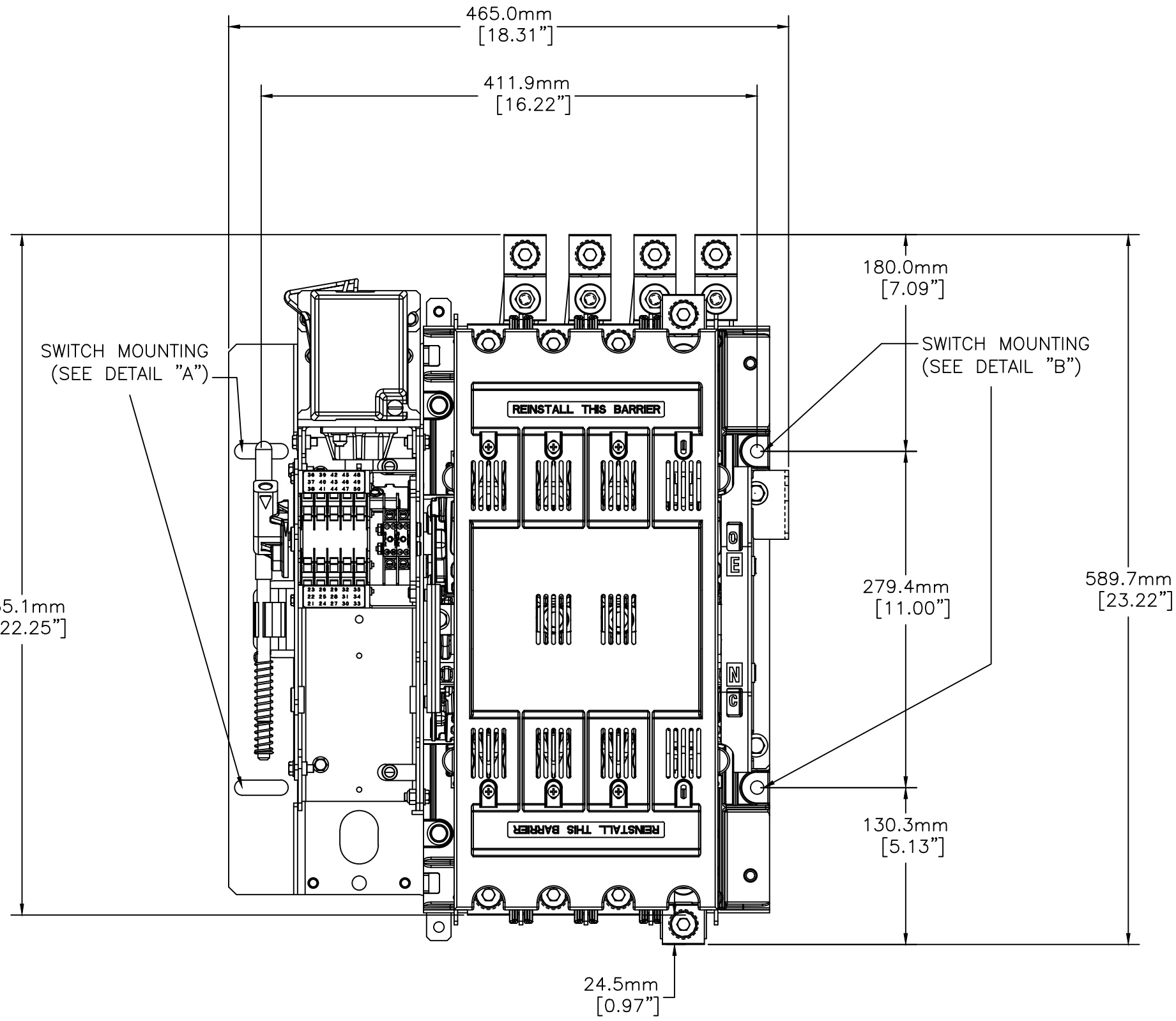


OUTLINE FOR ASCO® 200 SERIES 260-400 AMPERE "J" FRAME (J2ATS,J2NTS) FRONT CONNECTED TRANSFER SWITCHING DEVICE OPEN TYPE

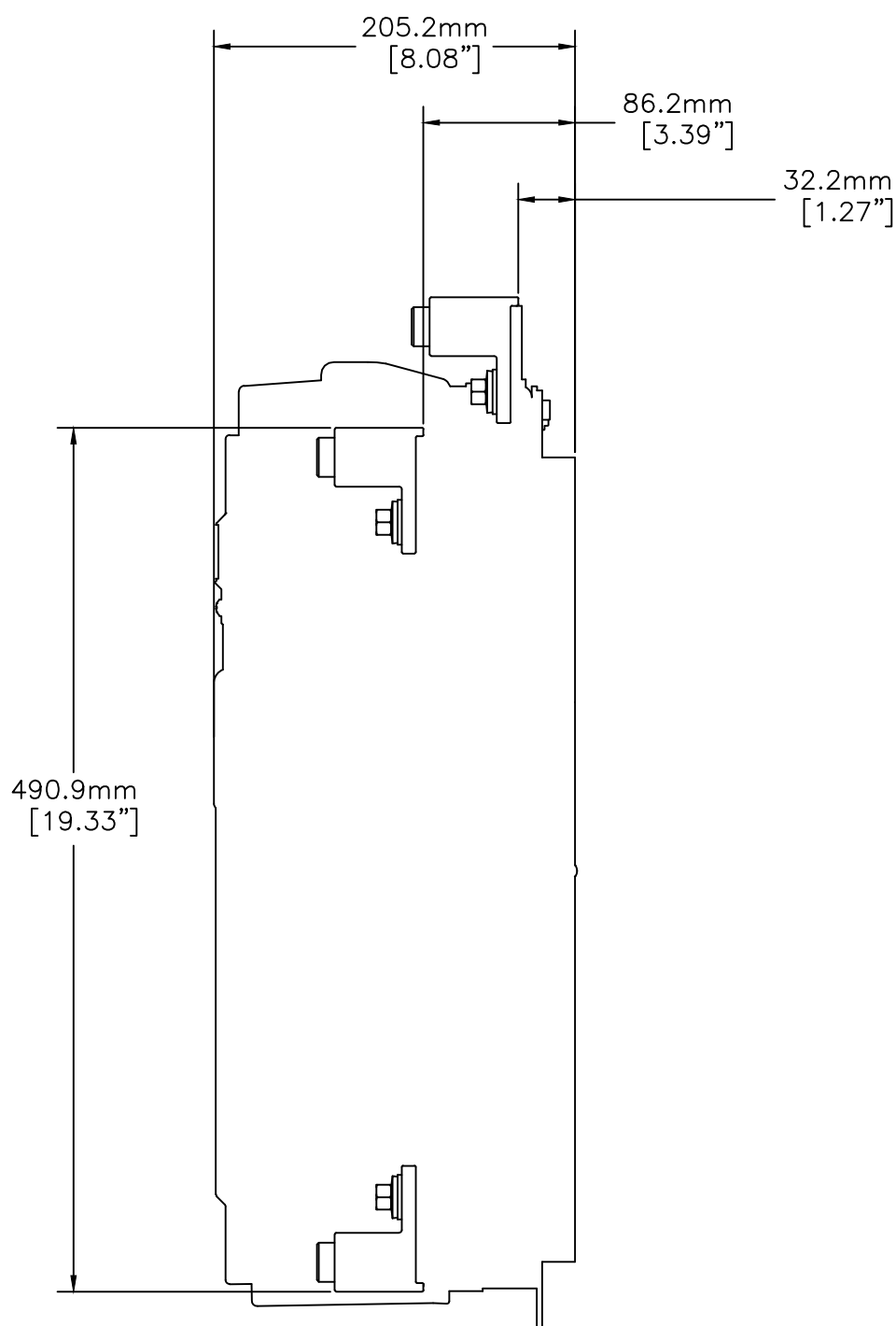
FRONT VIEW



260-400 AMP ATS W/SWITCHED NEUTRAL



260-400 AMP ATS W/ OVERLAPPING NEUTRAL



SIDE VIEW

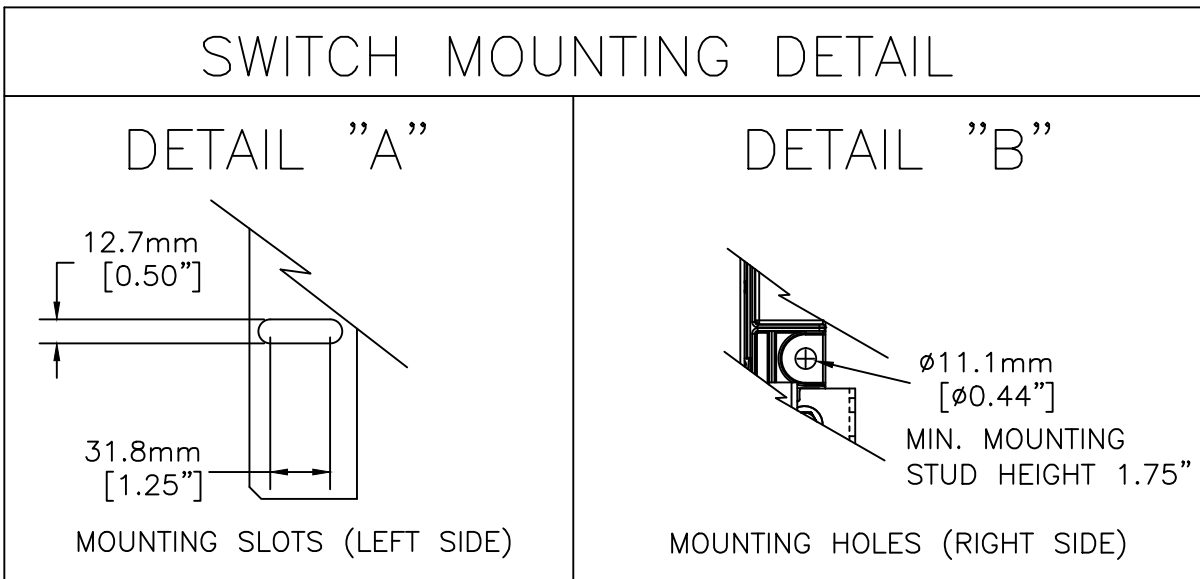


TABLE 1: POLE LOCATIONS												
POLES	A	B	C	D	E	F	G	H	J	K	L	M
2	L3	V3	L7	N3	L2	V2	L6	N2	L1		L5	N1
3	U3	V3	W3	N3	U2	V2	W2	N2	U1	V1	W1	N1

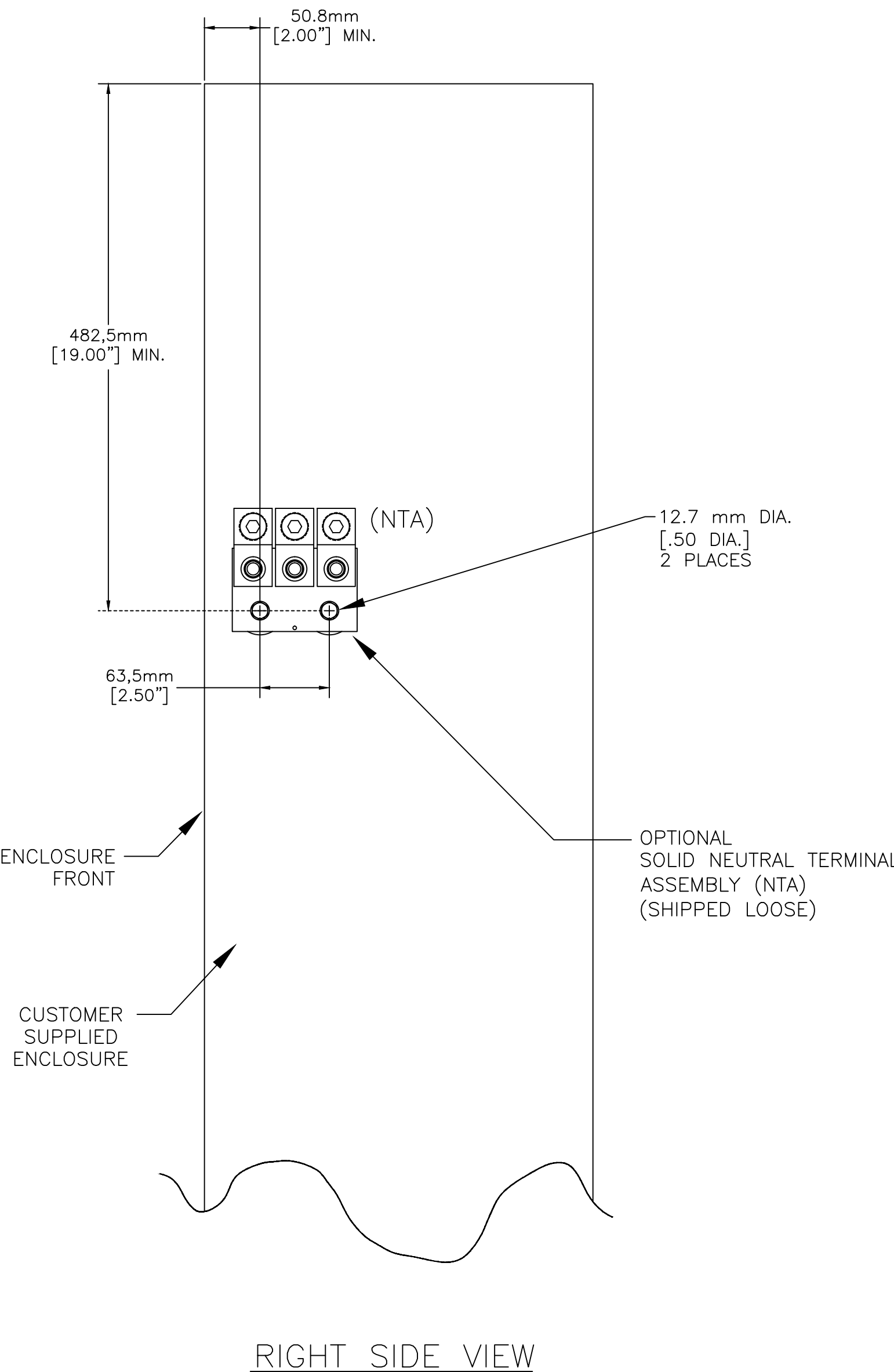
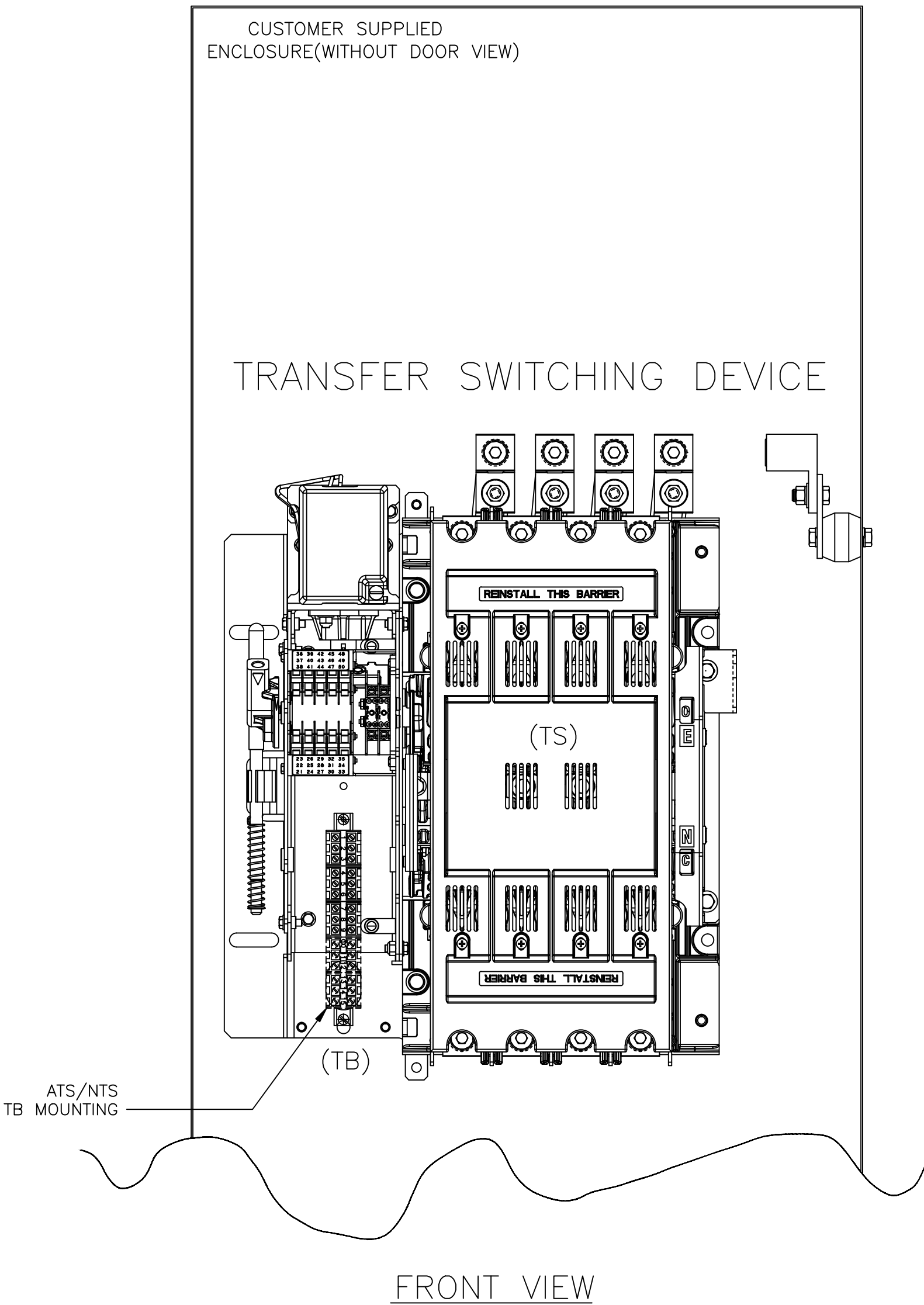
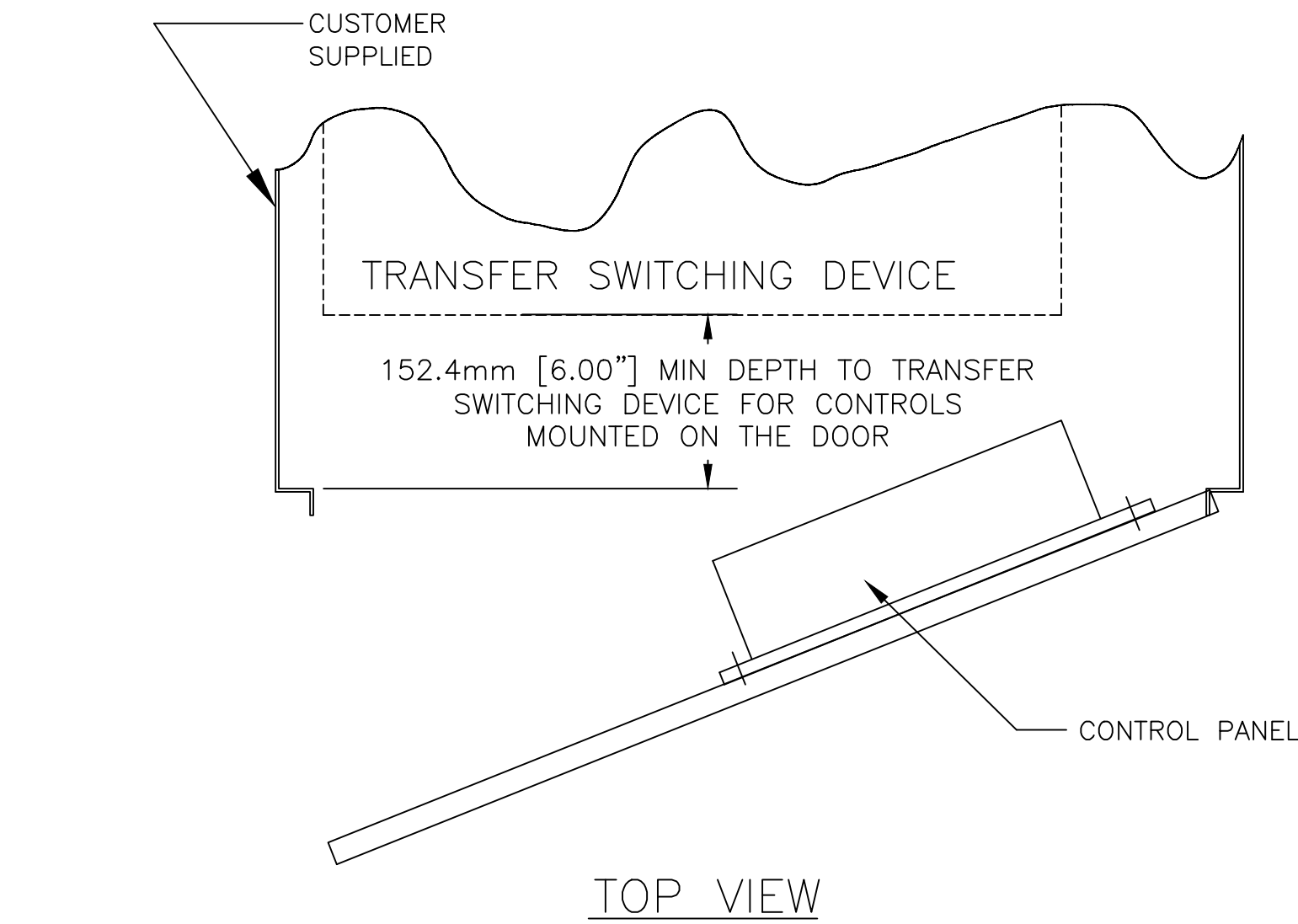
260-400 AMP UNITS APPROXIMATE SHIPPING WEIGHT, KG (LBS)

SWITCH TYPE	POLES	WEIGHTS KG (LB)
ATS	2	31 (68)
ATS	3	34 (74)
ATS	4	36 (80)

TRANSFER SWITCHING EQUIPMENT (IEC/CE) RATED UP TO 480 VAC MAX.		B		269555	TR	BK	11/29/17
		A		270014	TR	BK	11/22/17
				267226	TR	BK	5/23/17
				ISSUE			
PROJECT NAME:		REV. TO SHEET	ECN NO.	BY	APP.	DATE	
COMPOSITE OUTLINE							
200 SERIES ATS/NTS "J" FRAME							
260-400A OPEN TYPE							
DRAWN BY	TR	DATE	5/23/17	MANUFACTURING TOLERANCES TO BE IN ACCORDANCE WITH ASCO PROCEDURE MP-1-003. FOR PLASTIC PARTS SEE MP-1-005		ASSEM. REF. NO.	COMPUTER GENERATED DRAWING
CHECKED	BK	5/23/17		PROPERTY OF ASCO POWER TECHNOLOGIES, USE PERMITTED FOR OUR WORK ONLY. ALL RIGHTS OF DESIGN OR INVENTION ARE RESERVED.			SCALE NONE SIZE DS
PROJECT APPROVAL	BK	5/23/17					DWG. NO. 1001393-019
FINAL APPROVAL							DRAWING B ECH 269555 SHEET 1 OF 3
				ASCO® ASCO POWER TECHNOLOGIES, L.P. FLORHAM PARK, NEW JERSEY 07932 U.S.A.			

OUTLINE FOR ASCO® 200 SERIES 260-400 AMPERE "J" FRAME (J2ATS,J2NTS) FRONT CONNECTED TRANSFER SWITCHING DEVICE OPEN TYPE

MOUNTING OF FIELD TERMINAL BLOCK ASSEMBLY (TB) AND SOLID NEUTRAL TERMINAL ASSEMBLY (NTA)
(REFER TO NOTE 10)



GENERAL NOTES

1. THE STANDARD SWITCH DEVICE CONFIGURATION IS FOR TOP (LOAD & EMERGENCY) AND BOTTOM (NORMAL). OPTIONALLY, THE SWITCH DEVICE MAY BE SUPPLIED WITH REVERSE SOURCES AND/OR BOTTOM LOAD. (REFER TO THE WIRING DIAGRAM FURNISHED WITH EACH TRANSFER SWITCHING DEVICE TO DETERMINE TERMINATION POSITIONS).
2. NEUTRAL CONFIGURATIONS:
AN OPTIONAL FULL RATED NEUTRAL CONFIGURATION FOR EACH SOURCE AND THE LOAD MAY BE PROVIDED. WHEN EQUIPPED IT IS IN ONE OF THE FOLLOWING FORMATS AS SPECIFIED BY THE CATALOG NUMBER NO. NEUTRAL TYPE:
(A) SOLID NEUTRAL TERMINAL ASSEMBLY (NTA)
(B) SWITCHED NEUTRAL POLE
(C) OVERLAPPING NEUTRAL POLE
3. THE STANDARD MECHANICAL (SCREW TYPE) AL/CU TERMINAL LUGS ARE SHOWN FOR REFERENCE.
4. WHEN INSTALLING CONDUCTORS, CONNECT TO SIMILARLY MARKED PHASES OF NORMAL, EMERGENCY & LOAD.
5. ALL INTERNAL CONNECTIONS ARE MADE AT FACTORY.
6. MAINTAIN ELECTRICAL CLEARANCE OF 25.4 mm (1.00") BETWEEN LIVE METAL PARTS AND GROUNDED METAL.
7. WHEN MOUNTING THE TRANSFER SWITCH IN THE ENCLOSURE, THE CONTROL PANEL(S) AND OPERATOR CONTROLS SHOULD BE MOUNTED ON THE INSIDE, REAR SURFACE OF THE DOOR. 152.4mm (6.00") MIN. DEPTH TO TRANSFER SWITCHING DEVICE FOR CONTROLS IS REQUIRED.
8. THE CONTROL PANEL(S) IS CONNECTED TO THE TRANSFER SWITCHING DEVICE BY A HARNESS WITH A QUICK DISCONNECT PLUG(S). THE HARNESS EXITS THE TRANSFER SWITCHING DEVICE ON THE RIGHT SIDE. CONSULT FACTORY FOR EXTENSION HARNESSES.
9. FOR TYPE 1, ENCLOSURE SEE DETAIL A -1 AND DETAIL B -1 FOR CUTOUT DATA.. FOR TYPE 3R, 4, & 12 ENCLOSURE SEE DETAIL A -2 & DETAIL B -2 FOR CUTOUT DATA. GASKETS AND BEZELS ARE PROVIDED FOR TYPE 3R, 4, & 12 ENCLOSURE.
10. CUSTOMER TERMINAL BLOCKS:
FOR 2ATS SERIES ATS AND NTS UNITS TB WILL BE MOUNTED ON THE TRANSFER SWITCHING DEVICE FRAME AS INDICATED ON THIS PAGE.

POWER CONNECTIONS

RANGE OF AL-Cu CONDUCTOR SIZES
ISO CROSS SECTION (mm²)
(USE STRANDED TYPE CONDUCTORS)

SWITCH RATING (AMPS)	CONDUCTOR SIZE RANGE	RECOMMENDED TIGHTENING TORQUE
260-400	ONE 25-300 OR TWO 50-120	42.4 Nm

MINIMUM REQUIRED ENCLOSURE SIZE mm (INCH)

SWITCH RATING (AMPS)	HEIGHT	WIDTH	DEPTH
260-400	1422mm (56.00")	610mm (24.00")	356mm (14.00")

TRANSFER SWITCHING EQUIPMENT
(IEC/CE) RATED UP TO 480 VAC MAX.

PROJECT NAME:		REV. TO SHEET	ECN NO.	BY	APP.	DATE
COMPOSITE OUTLINE		THIRD ANGLE PROJECTION				
200 SERIES ATS/NTS "J" FRAME		COMPUTER GENERATED DRAWING				
260-400A OPEN TYPE		DWG. NO.				
DRAWN BY	TR	DATE	5/23/17	MANUFACTURING TOLERANCES TO BE IN ACCORDANCE WITH ASCO PROCEDURE MP-1-003. FOR PLASTIC PARTS SEE MP-1-005	ASSEM. REF. NO.	SCALE NONE SIZE DS
CHECKED	BK	5/23/17		PROPERTY OF ASCO POWER TECHNOLOGIES, USE PERMITTED FOR OUR WORK ONLY. ALL RIGHTS OF DESIGN OR INVENTION ARE RESERVED.		
PROJECT APPROVAL	BK	5/23/17				
FINAL APPROVAL						
ASCOTM ASCO POWER TECHNOLOGIES, L.P. FLORHAM PARK, NEW JERSEY 07932 U.S.A.		1001393-019				
DRAWING B		ECN NO.	269555	SHEET 2 OF 3		

