

OUTLINE & MOUNTING FOR **ASCO**® 7000 SERIES AUTOMATIC TRANSFER & BYPASS-ISOLATION SWITCHING EQUIPMENT TYPES H7ATB, H7ACTB & H7ADTB RATED 600-1200 AMPS

GENERAL NOTES

1. OPEN TYPE. FREE STANDING. FLOOR MOUNTED. 12 GAUGE FRAME CONSTRUCTION.
2. NEC STANDARD GAUGE PAN TYPE DOORS WITH LOCKABLE HANDLES AND REMOVABLE COVERS.
3. FINISH: ANSI 61 GRAY, POLYESTER POWDER.
4. CONSTRUCTION IS IN ACCORDANCE WITH APPLICABLE REQUIREMENTS OF IEC 60529, IP20.
5. PADLOCKING PROVISIONS ARE INCLUDED:  
ISOLATION HANDLE: THE TRANSFER SWITCHING DEVICE ISOLATION HANDLE MAY BE PADLOCKED WITH THE TRANSFER SWITCHING DEVICE IN THE FULLY ISOLATED (DISCONNECTED POSITION).
6. UNIT CAN BE ADAPTED FOR CONNECTION OF BUS DUCT FLANGES. (CONSULT FACTORY)
7. RECOMMENDED CLEARANCES:  
FRONT: 1220mm [48.00"]  
REAR: 914mm [36.00"]
8. A FULL RATED NEUTRAL CONNECTION FOR EACH SOURCE AND THE LOAD IS OPTIONAL.  
WHEN PROVIDED IT IS IN ONE OF THE FOLLOWING FORMATS AS SPECIFIED BY THE CATALOG NO. NEUTRAL TYPE:  
TYPE A: SOLID NEUTRAL BUS  
TYPE B: SWITCHED NEUTRAL POLE  
TYPE C: OVERLAPPING NEUTRAL POLE (NOT AVAILABLE ON 7ADTB & 7ACTB UNITS)
9. THE STANDARD SWITCHING DEVICE CONFIGURATION IS FOR TOP EMERGENCY, CENTER LOAD, AND BOTTOM NORMAL. OPTIONALLY, THE SWITCH MAY BE SUPPLIED WITH REVERSE SOURCES.  
(REFER TO THE WIRING DIAGRAM FURNISHED WITH EACH TRANSFER SWITCHING DEVICE TO DETERMINE TERMINATION POSITIONS).
10. APPROXIMATE WEIGHT: 499Kg [1100 LBS].
11. STANDARD OUTLINE FOR 4 POLE (B3) 400 AMP 7ADTB.

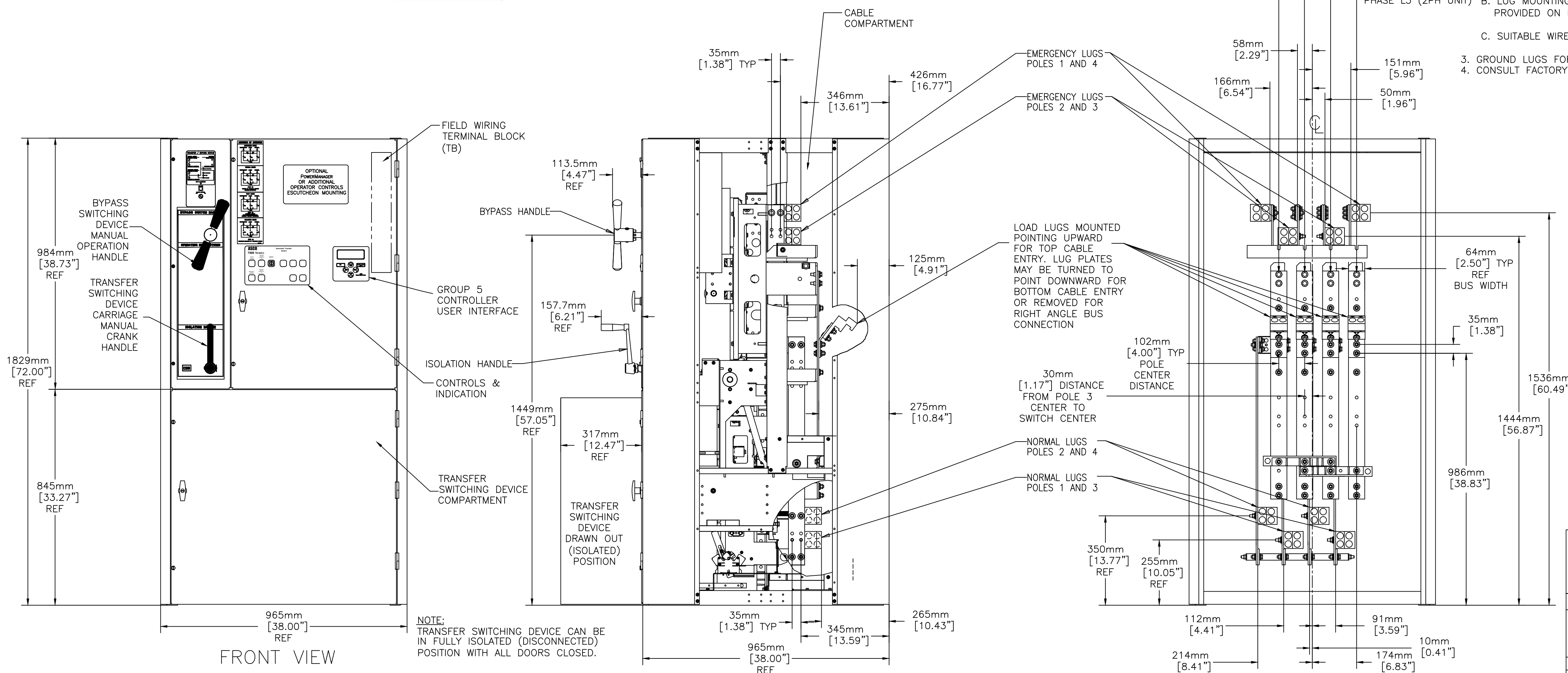
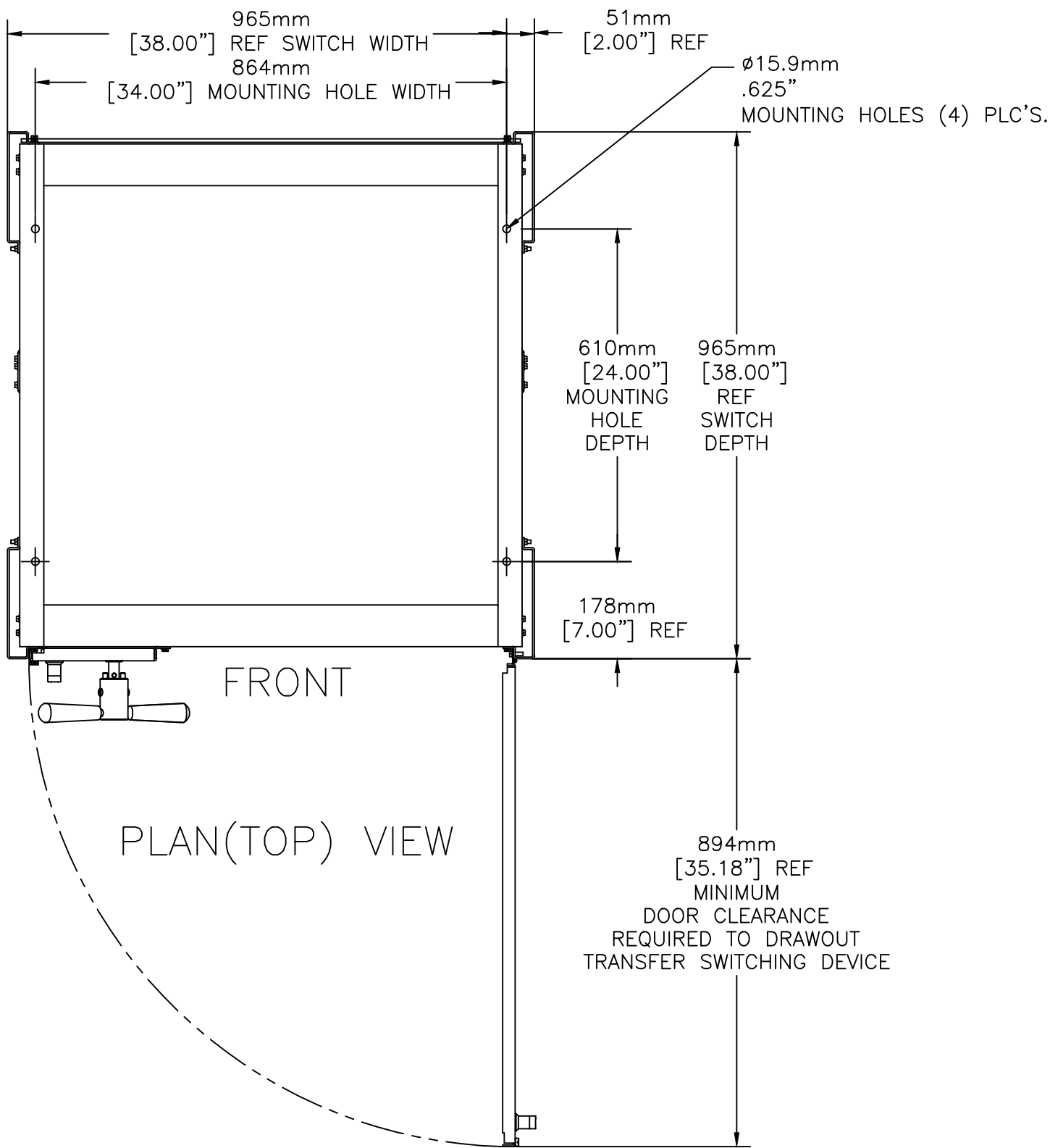
CABLING NOTES

1. ALL SIZES SUPPLIED STANDARD WITH MECHANICAL (SCREW TYPE) LUGS ON THE NORMAL, EMERGENCY & LOAD. ONE (1) LUG PER PHASE AND NEUTRAL EACH SUITABLE FOR CONNECTION OF TWO (2) 35-300mm² [#2-600 MCM] CU/AL CABLE FOR 600 AMP SWITCH AND 4 POLE (B3) 400 AMP. FOUR (4) 50-380mm² [1/0-750 MCM] CU/AL CABLE FOR 800-1200 AMP SWITCHING DEVICE.  
A. LUG MATERIAL: ALUMINUM ALLOY 6061-T6 WITH ELECTRO TIN PLATED FINISH.  
B. SCREW MATERIAL: ALUMINUM ALLOY 6262-T9 WITH ELECTRO TIN PLATED FINISH.  
C. LUG SCREW TIGHTENING TORQUE : 42,4Nm [375 IN-LBS].  
D. SUITABLE WIRE BENDING SPACE IS PROVIDED FOR UP TO TWO (2) 300mm [600MCM] CABLES PER TERMINAL FOR THE 600 AMP SWITCH & FOUR (4) 380mm² [750 MCM] CABLES PER TERMINAL FOR THE 800-1200 AMP.
2. OPTIONAL COPPER CRIMP LUGS MAY BE SUPPLIED. UP TO THREE (3) TWO HOLE, LONG BARREL CU CRIMP LUGS RATED FOR UP TO 380mm² [750MCM]. (REFER TO CRIMP LUG INSTALLATION DATA PROVIDED WITH UNIT FOR FULL INSTALLATION DETAILS).  
A. LUG MATERIAL: HIGH CONDUCTIVITY WROUGHT COPPER FINISH, ELECTRO TIN PLATED.  
B. LUG MOUNTING HARDWARE TIGHTENING TORQUE: (REFER TO WITHSTAND CURRENT RATING LABEL PROVIDED ON EACH TRANSFER SWITCHING DEVICE).  
C. SUITABLE WIRE BENDING SPACE IS PROVIDED FOR UP TO THREE (3) 380mm² [750MCM] CABLES PER TERMINAL.
3. GROUND LUGS FOR UP TO (12) 50-380mm² [1/0-750MCM] CU/AL CABLES ARE PROVIDED AS STANDARD.
4. CONSULT FACTORY FOR OTHER TERMINATION REQUIREMENTS.

POWER CONNECTIONS		
RANGE OF Al-Cu CONDUCTOR SIZES ISO CROSS SECTION (mm²) (USE STRANDED TYPE CONDUCTORS)		
SWITCH RATING (AMPS)	CONDUCTOR SIZE RANGE	RECOMMENDED TIGHTENING TORQUE
600	TWO 35-300	42,4 Nm
800-1200	FOUR 50-380	42,4 Nm

FOUR 50-380mm² XL PE CONDUCTOR COMPACT

TRANSFER SWITCHING EQUIPMENT (IEC/CE) RATED UP TO 480 VAC MAX.		REV. TO SHEET		ECN NO.	BY	APP.	DATE
PROJECT NAME:		REV. TO SHEET		ECN NO.	BY	APP.	DATE
OUTLINE & MOUNTING		REV. TO SHEET		ECN NO.	BY	APP.	DATE
600-1200 AMP OPEN STYLE TB, CTB, DTB		REV. TO SHEET		ECN NO.	BY	APP.	DATE
TRANSFER WITH BYPASS/ISOLATION		REV. TO SHEET		ECN NO.	BY	APP.	DATE
DRAWN BY		DATE		MANUFACTURING TOLERANCES TO BE IN ACCORDANCE WITH ASCO PROCEDURE MP-1-003. FOR PLASTIC PARTS SEE MP-1-005		ASSEM. REF. NO.	
CHECKED		DATE		PROPERTY OF ASCO POWER TECHNOLOGIES. USE PERMITTED FOR OUR WORK ONLY. ALL RIGHTS OF DESIGN OR INVENTION ARE RESERVED.		DWG. NO.	
PROJECT APPROVAL		DATE		ASCO® ASCO POWER TECHNOLOGIES, L.P. FLORHAM PARK, NEW JERSEY 07932 U.S.A.		736939-002-A	
FINAL APPROVAL		DATE		DRAWING H		SHEET 1 OF 1	



NOTE:  
TRANSFER SWITCHING DEVICE CAN BE  
IN FULLY ISOLATED (DISCONNECTED)  
POSITION WITH ALL DOORS CLOSED.