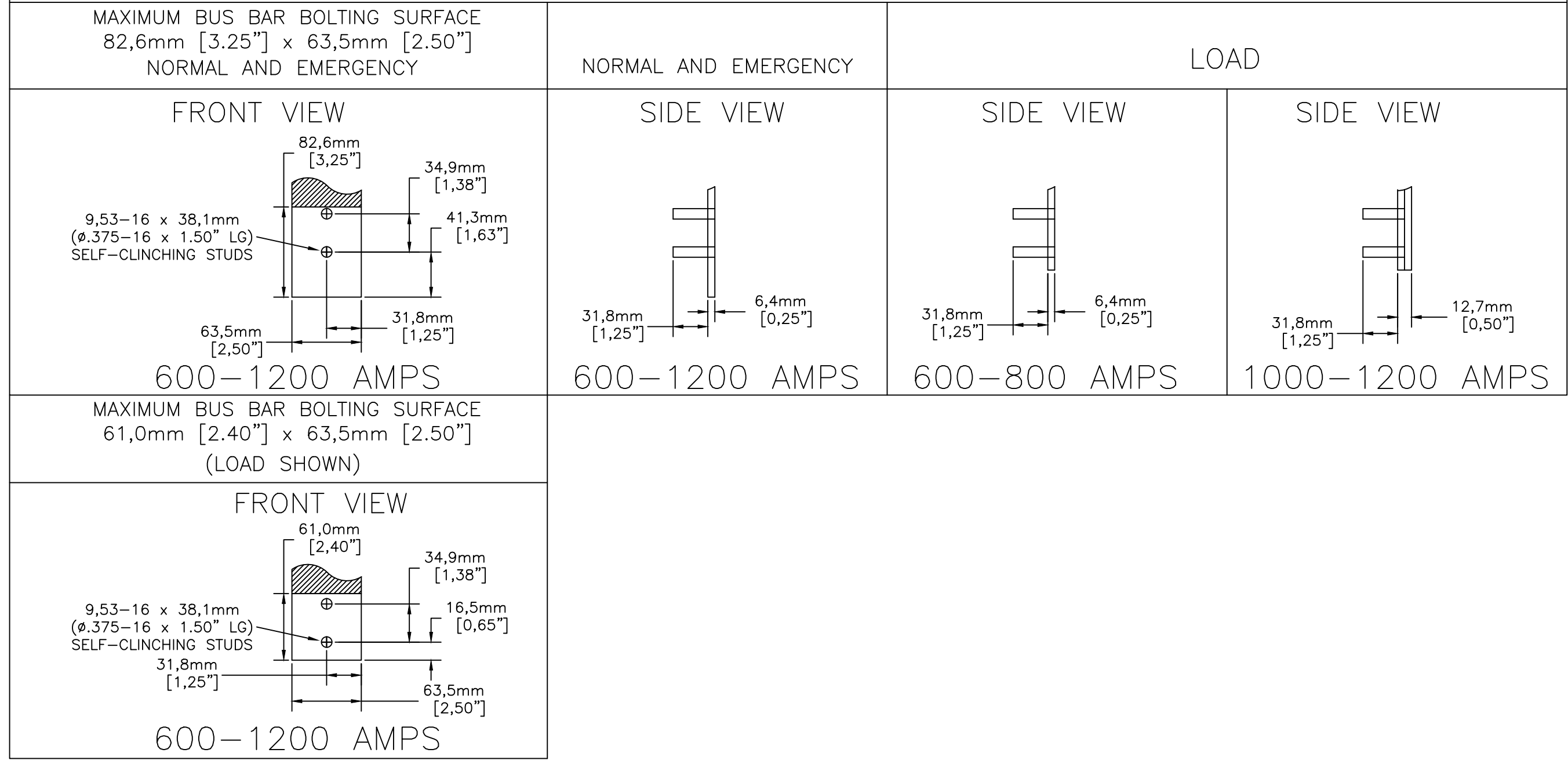


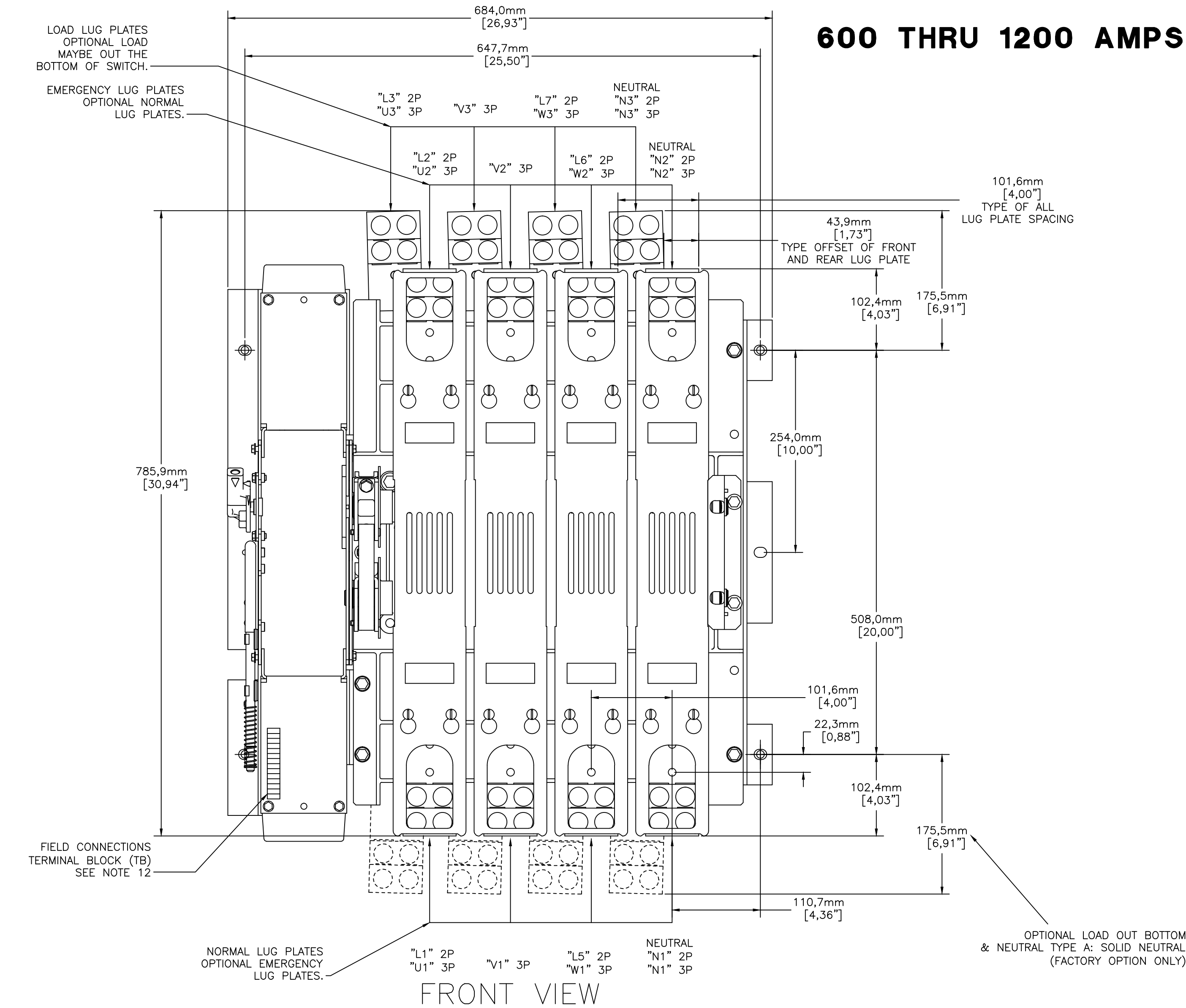
8 7 6 5 4 3 2 1

OUTLINE & MOUNTING FOR ASCO® 4000 & 7000 SERIES AUTOMATIC TRANSFER SWITCHING EQUIPMENT TYPE HATS, HACTS & HADTS RATED 600-1200 AMPERES

BUS TERMINATION DETAIL



600 THRU 1200 AMPS



| H7ATS, H7MTS SWITCH RATING (AMPS) | POLES | WEIGHTS KG (LB) |
|--------------------------------------|-------|--------------------|
| 600,800 | 2 | 54 (119) |
| 600,800 | 3 | 64 (142) |
| (400A 7ADTS) 600,800 | 4 | 75 (165) |
| 1000,1200 | 2 | 59 (131) |
| 1000,1200 | 3 | 73 (160) |
| 1000,1200 | 4 | 86 (189) |

GENERAL NOTES

- THE STANDARD SWITCH CONFIGURATION IS FOR TOP EMERGENCY & LOAD AND BOTTOM NORMAL. OPTIONALLY, THE SWITCH MAY BE SUPPLIED WITH LOAD ON THE BOTTOM. (REFER TO THE WIRING DIAGRAM FURNISHED WITH EACH TRANSFER SWITCHING DEVICE TO DETERMINE TERMINATION POSITIONS).
- NEUTRAL CONFIGURATIONS:
AN OPTIONAL FULL RATED NEUTRAL CONFIGURATION FOR EACH SOURCE AND THE LOAD MAY BE PROVIDED. WHEN EQUIPPED IT IS IN ONE OF THE FOLLOWING FORMATS AS SPECIFIED BY THE CATALOG NUMBER NO. NEUTRAL TYPE:
(A) SOLID (COPPER BUS) NEUTRAL
(B) SWITCHED NEUTRAL POLE
(C) OVERLAPPING NEUTRAL POLE
(NOT AVAILABLE ON ACTS/ADTS UNITS)
- THE STANDARD MECHANICAL (SCREW TYPE) AL/CU TERMINAL LUGS ARE SHOWN FOR REFERENCE (800-1200).
- SWITCH NEUTRAL POLE IS SHOWN FOR REFERENCE.
- WHEN INSTALLING CONDUCTORS, CONNECT TO SIMILARLY MARKED PHASES OF NORMAL, EMERGENCY & LOAD.
- ALL INTERNAL CONNECTIONS ARE MADE AT FACTORY.
- MAINTAIN ELECTRICAL CLEARANCE OF 25,4mm [1.00"] BETWEEN LIVE METAL PARTS AND GROUNDED METAL.
- WHEN MOUNTING THE TRANSFER SWITCHING DEVICE IN THE ENCLOSURE, THE CONTROL PANEL(S) AND OPERATOR CONTROLS SHOULD BE MOUNTED ON THE INSIDE, REAR SURFACE OF THE DOOR. 152,4mm [6.00"] MIN. DEPTH TO TRANSFER SWITCHING DEVICE FOR CONTROLS IS REQUIRED.
- THE CONTROL PANEL(S) IS CONNECTED TO TRANSFER SWITCHING DEVICE BY A HARNESS WITH A QUICK DISCONNECT PLUG(S). THE HARNESS EXITS TRANSFER SWITCHING DEVICE ON THE RIGHT SIDE. CONSULT FACTORY FOR EXTENSION HARNESSES.
- OPTIONAL ACCESSORY ADD-ON PANELS.
- FOR TYPE 1 ENCLOSURE SEE DETAIL A -1 AND DETAIL B -1 FOR CUTOUT DATA.
FOR TYPE 3R, 4, & 12 ENCLOSURE SEE DETAIL A -2 & DETAIL B -2 FOR CUTOUT DATA.
GASKETS AND BEZELS ARE PROVIDED FOR TYPE 3R, 4, & 12 ENCLOSURE.
- CUSTOMER TERMINAL BLOCKS:
FOR ALL 7000 SERIES AND 4000 SERIES ACTS, ADTS, NCTS, & NDTs UNITS THE TB WILL BE MOUNTED ON THE UPPER RIGHT INSIDE OF ENCLOSURE AS INDICATED ON THE NEXT PAGE.
FOR 4000 SERIES ATS AND NTS UNITS TB WILL BE MOUNTED ON TRANSFER SWITCHING DEVICE FRAME AS INDICATED ON THIS PAGE.

| SERIES | CATALOG PREFIX |
|--------|----------------|
| 4000 | 4ATS |
| | 4NTS |
| | 4ACTS |
| | 4NCTS |
| | 4ADTS |
| 7000 | 4NDTS |
| | 7ATS |
| | 7NTS |
| | 7ACTS |
| | 7NCTS |
| | 7ADTS |
| | 7NDTS |

| SIZE | CABLE ACCOMMODATIONS (PER PHASE & NEUTRAL) |
|--------------|--|
| (400A 7ADTS) | SCREW TYPE (STANDARD)- (3) 13-127mm ² [(3) #6 - 250 MCM AL/CU] |
| 600 | SCREW TYPE (STANDARD)- (2) 35-300mm ² [(2) #2 - 600 MCM AL/CU] |
| 800-1200 | SCREW TYPE (STANDARD)- (4) 50-300mm ² [(4) 1/0 - 750 MCM AL/CU] |
| (SHOWN) | |

NOTE : CONSULT FACTORY FOR OTHER CABLING & TERMINATION REQUIREMENTS.

| POWER CONNECTIONS | | |
|--|----------------------|-------------------------------------|
| RANGE OF Al-Cu CONDUCTOR SIZES ISO CROSS SECTION (mm ²) (USE STRANDED TYPE CONDUCTORS) | | |
| SWITCH RATING (AMPS) | CONDUCTOR SIZE RANGE | RECOMMENDED TIGHTENING TORQUE |
| 400 | THREE 13-127 | 42,4 Nm |
| 600 | TWO 35-300 | 42,4 Nm |
| 800-1200 | FOUR 50-300 | 42,4 Nm |

NOTES 600 AMP SWITCHES

- SUPPLIED WITH STANDARD MECHANICAL (SCREW TYPE) LUGS ON THE NORMAL, EMERGENCY & LOAD BUS STABS. ONE (1) LUG PER PHASE AND NEUTRAL EACH SUITABLE FOR CONNECTION OF (2) 35-300mm² [(2) #2 - 750 MCM AL/CU] CABLE
- OPTIONAL COPPER CRIMP LUGS MAY BE SUPPLIED. UP TO TWO (2) TWO HOLE, LONG BARREL CU CRIMP LUGS RATED FOR UP TO (2) 300mm² [(2) 600 MCM].

NOTES 800-1200 AMP SWITCHES

- SUPPLIED WITH STANDARD MECHANICAL (SCREW TYPE) LUGS ON THE NORMAL, EMERGENCY & LOAD BUS STABS. ONE (1) LUG PER PHASE AND NEUTRAL EACH SUITABLE FOR CONNECTION OF (4) 50-300mm² [(4) 1/0 - 750 MCM AL/CU] CABLE.
- OPTIONAL COPPER CRIMP LUGS MAY BE SUPPLIED. UP TO FOUR (4) TWO HOLE, LONG BARREL CU CRIMP LLUGS RATED FOR UP TO (2) 300mm² [(2) 600 MCM].

NOTES 400A (ADTS"B3" 4 POLE ONLY)

- GROUND LUGS ARE PROVIDED STANDARD AS FOLLOWS:
(3) 13-127mm² [(3) #6 - 250 MCM AL/CU] CABLE CONNECTIONS.
MINIMUM REQUIRED ENCLOSURE SIZE mm (INCH)

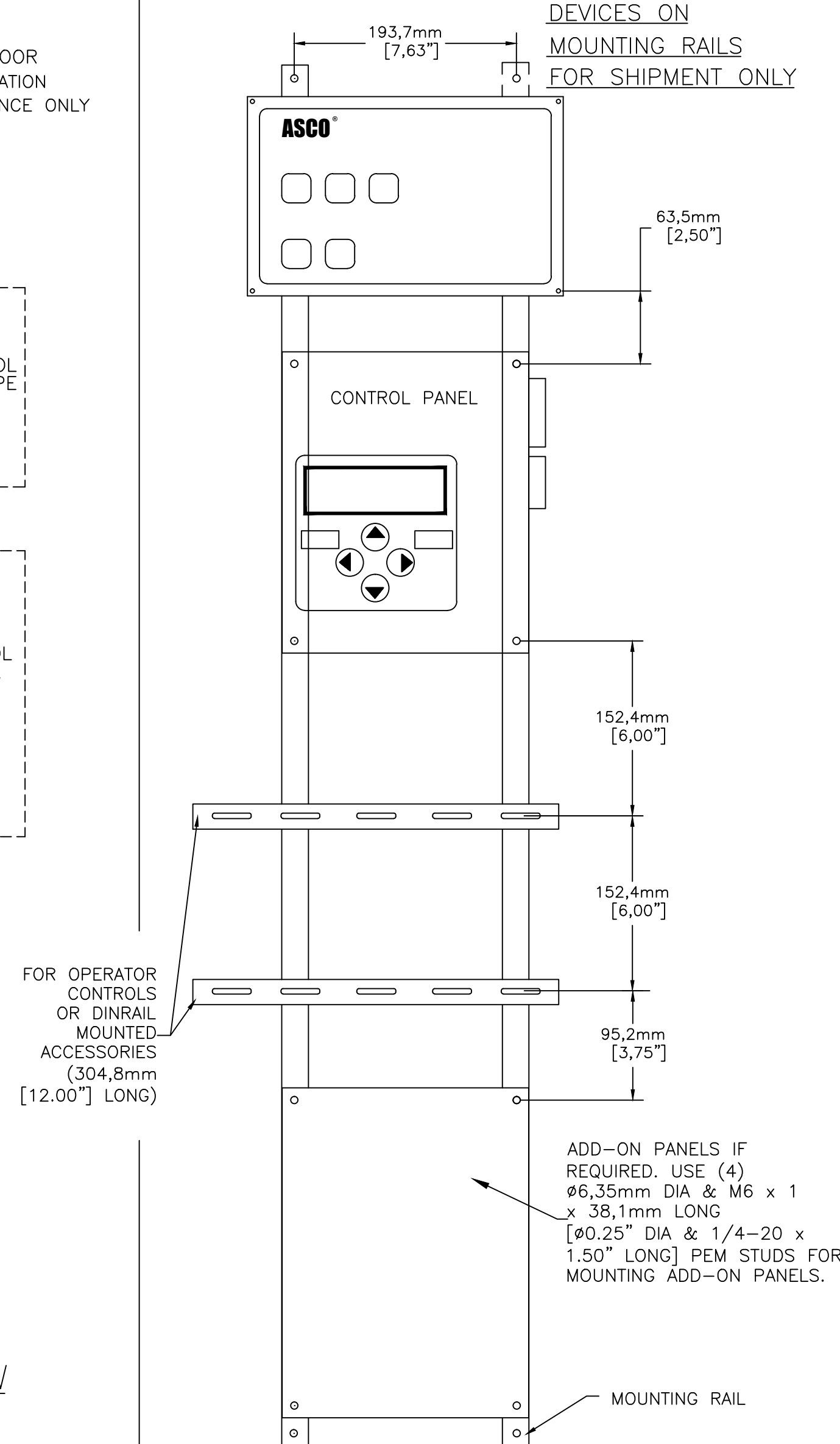
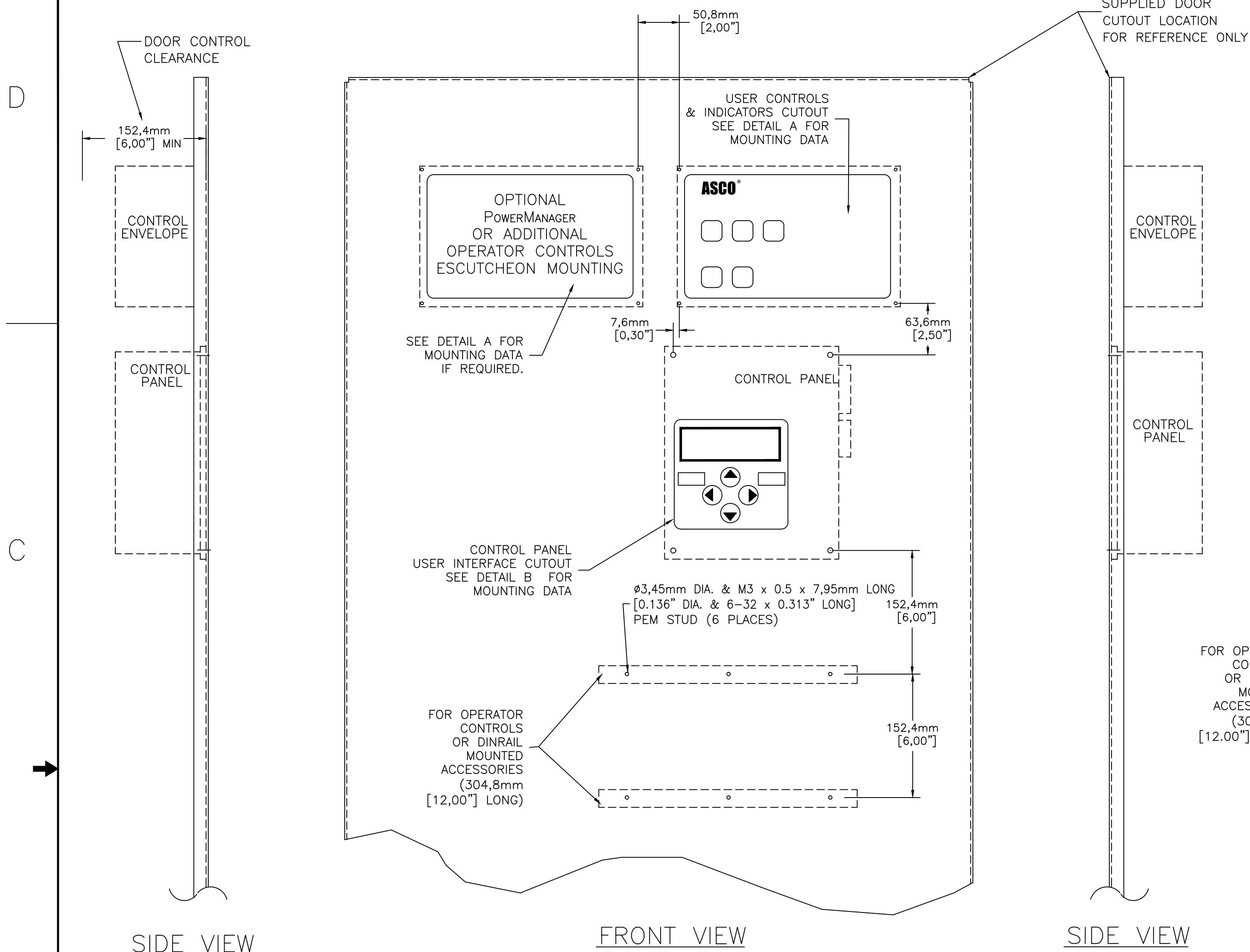
| SWITCH RATING (AMPS) | HEIGHT | WIDTH | DEPTH |
|--------------------------|-------------------|-------------------|------------------|
| (400A 7ADTS)600,800,1000 | 1828,8mm (72.00") | 863,6mm (34.00")* | 508,0mm (20.00") |
| 1200 | 2209,8mm (87.00") | 965,2mm (38.00") | 584,2mm (23.00") |

- NOTE: *=WIDTH MAY BE 762,0mm [30.00"] IF NO CABLES ARE TO BE RUN ALONG THE SIDE OF TRANSFER SWITCHING DEVICE, "1200 AMPS" NEEDS VENTILATION TOP AND BOTTOM.
- NOTE: 1200 AMP T/S REQUIRES MIN. 619cm² [96.00"] OF VENTILATION. 309cm² [48.00"] TOP AND BOTTOM. VENTILATION SHOULD BE PLACED FRONT AND REAR OF ENCLOSURE UNLESS VENTILATION IS IMPEDED ON THE REAR. THEN ALL VENTILATION MUST BE PROVIDED ON FRONT OF ENCLOSURE

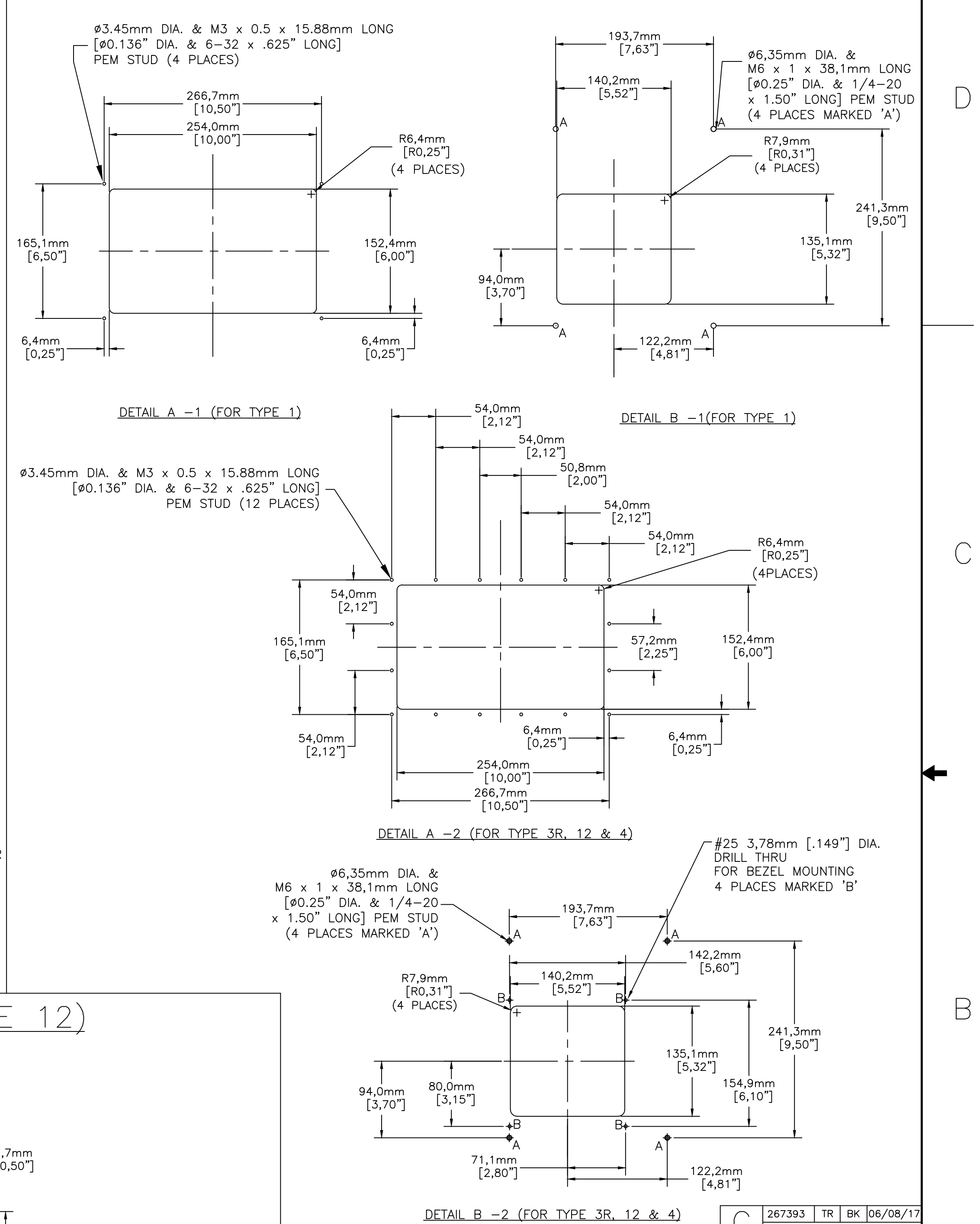
TRANSFER SWITCHING EQUIPMENT
(IEC/CE) RATED UP TO 480 VAC MAX.

| | | | | | | |
|----------------------------|------|---|---------|-----------------|----------------------------|--------------|
| PROJECT NAME: | | REV. TO SHEET | ECN NO. | BY | APP. | DATE |
| COMPOSITE | | OUTLINE | | | | |
| 4000/7000 SERIES TS | | | | | | |
| "H" OPEN TYPE 600-1200 AMP | | | | | | |
| DRAWN BY | DATE | MANUFACTURING TOLERANCES TO BE IN ACCORDANCE WITH ASCO PROCEDURE MP-1-003. FOR PLASTIC PARTS SEE MP-1-005 | | ASSEM. REF. NO. | COMPUTER GENERATED DRAWING | |
| CHECKED | DATE | PROPERTY OF ASCO POWER TECHNOLOGIES. USE PERMITTED FOR OUR WORK ONLY. ALL RIGHTS OF DESIGN OR INVENTION ARE RESERVED. | | | SCALE | NO. SIZE DS |
| PROJECT APPROVAL | DATE | | | | | |
| FINAL APPROVAL | | | | | | |
| | | ASCO® ASCO POWER TECHNOLOGIES, L.P. FLORHAM PARK, NEW JERSEY 07932 U.S.A. | | DWG. NO. | 713200-002-A | |
| | | | | DRAWING G | ECN NO. 267393 | SHEET 1 OF 2 |

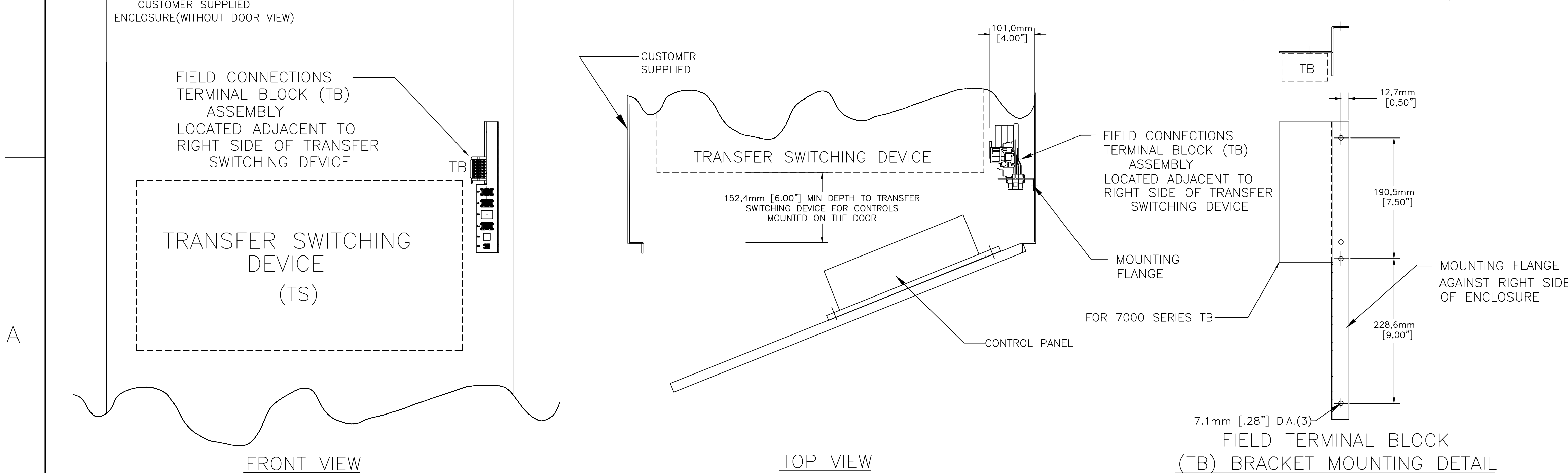
OUTLINE & MOUNTING FOR ASCO® 4000 & 7000 SERIES AUTOMATIC TRANSFER SWITCHING EQUIPMENT TYPE ATS, ACTS & ADTS RATED 600-1200 AMPERES

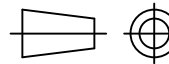



CONTROL PANEL & CONTROLS MOUNTING DATA



MOUNTING OF FIELD TERMINAL BLOCK ASSEMBLY (TB) (SEE NOTE 12)



| | | | | | | | | | | | | | | | | | | | | | | | | | | | | | | | | | | | | | | | | | | | | | | | | | | | | | | | | | | | | | | | | | | | | | | | | | | | |
|--|---------|----------|--|--|----------------------------|--|------|------|--------|----|----|----------|---|--------|----|----|----------|---------|--|--|--|---|--------|----|----|----------|---------|--|--|--|---|--------|----|----|----------|---------|--|--|--|---|--------|-----|----|----------|---------|--|--|--|---|--------|-----|----|----------|---------|--|--|--|---|--------|-----|----|----------|---------|--|--|--|---|--------|----|----|----------|--------|--|--|--|
| DETAIL B -2 (FOR TYPE 3R, 12 & 4) | | | | <table><tr><td>G</td><td>267393</td><td>TR</td><td>BK</td><td>06/08/17</td></tr><tr><td rowspan="2">F</td><td>267064</td><td>TR</td><td>BK</td><td>05/15/17</td></tr><tr><td colspan="4">SEE ECN</td></tr><tr><td rowspan="2">E</td><td>265722</td><td>TR</td><td>BK</td><td>03/30/17</td></tr><tr><td colspan="4">SEE ECN</td></tr><tr><td rowspan="2">D</td><td>265695</td><td>TR</td><td>BK</td><td>03/07/17</td></tr><tr><td colspan="4">SEE ECN</td></tr><tr><td rowspan="2">C</td><td>208698</td><td>PBP</td><td>WK</td><td>05/15/06</td></tr><tr><td colspan="4">SEE ECN</td></tr><tr><td rowspan="2">B</td><td>163248</td><td>AMS</td><td>WK</td><td>03/27/03</td></tr><tr><td colspan="4">SEE ECN</td></tr><tr><td rowspan="2">A</td><td>161486</td><td>BWM</td><td>WK</td><td>08/27/02</td></tr><tr><td colspan="4">SEE ECN</td></tr><tr><td rowspan="2">—</td><td>159443</td><td>MM</td><td>WK</td><td>12/04/01</td></tr><tr><td colspan="4">ISSUED</td></tr></table> | | | | G | 267393 | TR | BK | 06/08/17 | F | 267064 | TR | BK | 05/15/17 | SEE ECN | | | | E | 265722 | TR | BK | 03/30/17 | SEE ECN | | | | D | 265695 | TR | BK | 03/07/17 | SEE ECN | | | | C | 208698 | PBP | WK | 05/15/06 | SEE ECN | | | | B | 163248 | AMS | WK | 03/27/03 | SEE ECN | | | | A | 161486 | BWM | WK | 08/27/02 | SEE ECN | | | | — | 159443 | MM | WK | 12/04/01 | ISSUED | | | |
| G | 267393 | TR | BK | 06/08/17 | | | | | | | | | | | | | | | | | | | | | | | | | | | | | | | | | | | | | | | | | | | | | | | | | | | | | | | | | | | | | | | | | | | | | | | |
| F | 267064 | TR | BK | 05/15/17 | | | | | | | | | | | | | | | | | | | | | | | | | | | | | | | | | | | | | | | | | | | | | | | | | | | | | | | | | | | | | | | | | | | | | | | |
| | SEE ECN | | | | | | | | | | | | | | | | | | | | | | | | | | | | | | | | | | | | | | | | | | | | | | | | | | | | | | | | | | | | | | | | | | | | | | | | | | |
| E | 265722 | TR | BK | 03/30/17 | | | | | | | | | | | | | | | | | | | | | | | | | | | | | | | | | | | | | | | | | | | | | | | | | | | | | | | | | | | | | | | | | | | | | | | |
| | SEE ECN | | | | | | | | | | | | | | | | | | | | | | | | | | | | | | | | | | | | | | | | | | | | | | | | | | | | | | | | | | | | | | | | | | | | | | | | | | |
| D | 265695 | TR | BK | 03/07/17 | | | | | | | | | | | | | | | | | | | | | | | | | | | | | | | | | | | | | | | | | | | | | | | | | | | | | | | | | | | | | | | | | | | | | | | |
| | SEE ECN | | | | | | | | | | | | | | | | | | | | | | | | | | | | | | | | | | | | | | | | | | | | | | | | | | | | | | | | | | | | | | | | | | | | | | | | | | |
| C | 208698 | PBP | WK | 05/15/06 | | | | | | | | | | | | | | | | | | | | | | | | | | | | | | | | | | | | | | | | | | | | | | | | | | | | | | | | | | | | | | | | | | | | | | | |
| | SEE ECN | | | | | | | | | | | | | | | | | | | | | | | | | | | | | | | | | | | | | | | | | | | | | | | | | | | | | | | | | | | | | | | | | | | | | | | | | | |
| B | 163248 | AMS | WK | 03/27/03 | | | | | | | | | | | | | | | | | | | | | | | | | | | | | | | | | | | | | | | | | | | | | | | | | | | | | | | | | | | | | | | | | | | | | | | |
| | SEE ECN | | | | | | | | | | | | | | | | | | | | | | | | | | | | | | | | | | | | | | | | | | | | | | | | | | | | | | | | | | | | | | | | | | | | | | | | | | |
| A | 161486 | BWM | WK | 08/27/02 | | | | | | | | | | | | | | | | | | | | | | | | | | | | | | | | | | | | | | | | | | | | | | | | | | | | | | | | | | | | | | | | | | | | | | | |
| | SEE ECN | | | | | | | | | | | | | | | | | | | | | | | | | | | | | | | | | | | | | | | | | | | | | | | | | | | | | | | | | | | | | | | | | | | | | | | | | | |
| — | 159443 | MM | WK | 12/04/01 | | | | | | | | | | | | | | | | | | | | | | | | | | | | | | | | | | | | | | | | | | | | | | | | | | | | | | | | | | | | | | | | | | | | | | | |
| | ISSUED | | | | | | | | | | | | | | | | | | | | | | | | | | | | | | | | | | | | | | | | | | | | | | | | | | | | | | | | | | | | | | | | | | | | | | | | | | |
| TRANSFER SWITCHING EQUIPMENT (IEC/CE) RATED UP TO 480 VAC MAX. | | | | | | | | | | | | | | | | | | | | | | | | | | | | | | | | | | | | | | | | | | | | | | | | | | | | | | | | | | | | | | | | | | | | | | | | | | | |
| PROJECT NAME: | | | | REV. TO SHEET | | ECN NO. | BY | APP. | DATE | | | | | | | | | | | | | | | | | | | | | | | | | | | | | | | | | | | | | | | | | | | | | | | | | | | | | | | | | | | | | | | | | | |
| COMPOSITE | | | | OUTLINE | | | | | | | | | | | | | | | | | | | | | | | | | | | | | | | | | | | | | | | | | | | | | | | | | | | | | | | | | | | | | | | | | | | | | | | |
| 4000/7000 SERIES TS | | | | | |  THIRD ANGLE PROJECTION | | | | | | | | | | | | | | | | | | | | | | | | | | | | | | | | | | | | | | | | | | | | | | | | | | | | | | | | | | | | | | | | | | | | | |
| "H" OPEN TYPE 600-1200 AMP | | | | | | | | | | | | | | | | | | | | | | | | | | | | | | | | | | | | | | | | | | | | | | | | | | | | | | | | | | | | | | | | | | | | | | | | | | | |
| DRAWN BY | BY | DATE | MANUFACTURING TOLERANCES TO BE IN ACCORDANCE WITH ASCO PROCEDURE MP-I-003. FOR PLASTIC PARTS SEE MP-I-055 | ASSEM. REF. NO. | COMPUTER GENERATED DRAWING | | | | | | | | | | | | | | | | | | | | | | | | | | | | | | | | | | | | | | | | | | | | | | | | | | | | | | | | | | | | | | | | | | | | | | |
| CHECKED | BK | 12/04/01 | PROPERTY OF ASCO POWER TECHNOLOGIES. USE PERMITTED FOR OUR WORK ONLY. ALL RIGHTS OF DESIGN OR INVENTION ARE RESERVED. | | SCALE | NONE | SIZE | DS | | | | | | | | | | | | | | | | | | | | | | | | | | | | | | | | | | | | | | | | | | | | | | | | | | | | | | | | | | | | | | | | | | | |
| PROJECT APPROVAL | WK | 12/04/01 | | | | | | | | | | | | | | | | | | | | | | | | | | | | | | | | | | | | | | | | | | | | | | | | | | | | | | | | | | | | | | | | | | | | | | | | | |
| FINAL APPROVAL | | | | | | | | | | | | | | | | | | | | | | | | | | | | | | | | | | | | | | | | | | | | | | | | | | | | | | | | | | | | | | | | | | | | | | | | | | | |
|  ASCO® ASCO POWER TECHNOLOGIES, L.P. FLORHAM PARK, NEW JERSEY 07932 U.S.A. | | | | DWG. NO. 713200-002-A DRAWING G ECN NO. 267393 SHEET 1 OF 2 | | | | | | | | | | | | | | | | | | | | | | | | | | | | | | | | | | | | | | | | | | | | | | | | | | | | | | | | | | | | | | | | | | | | | | | |