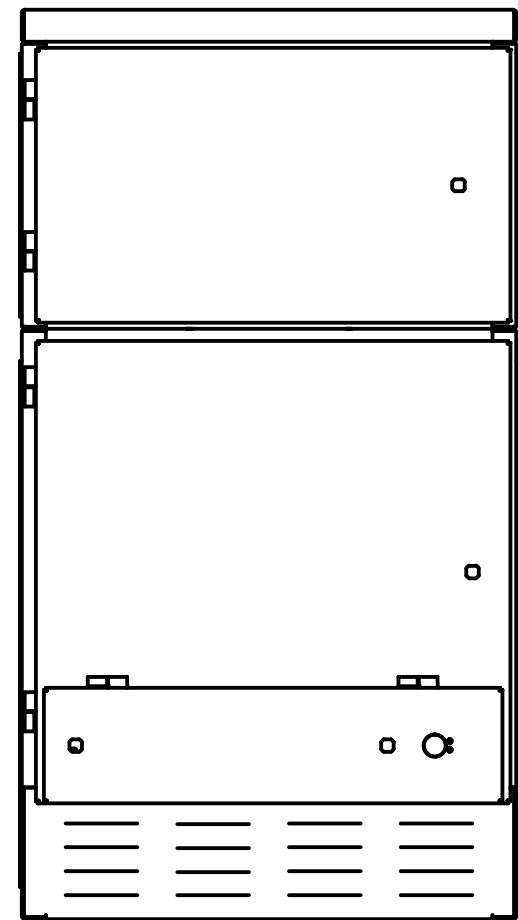
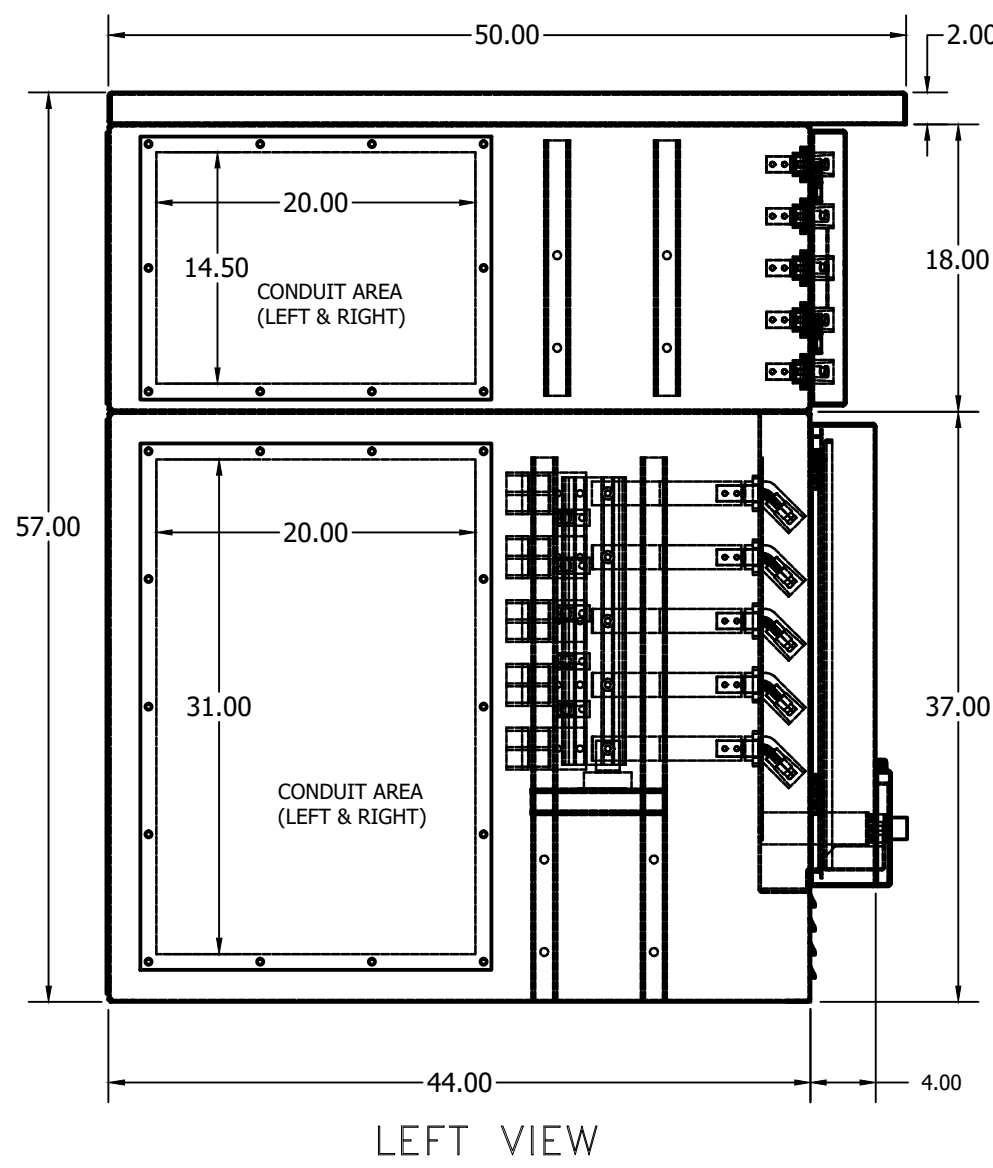
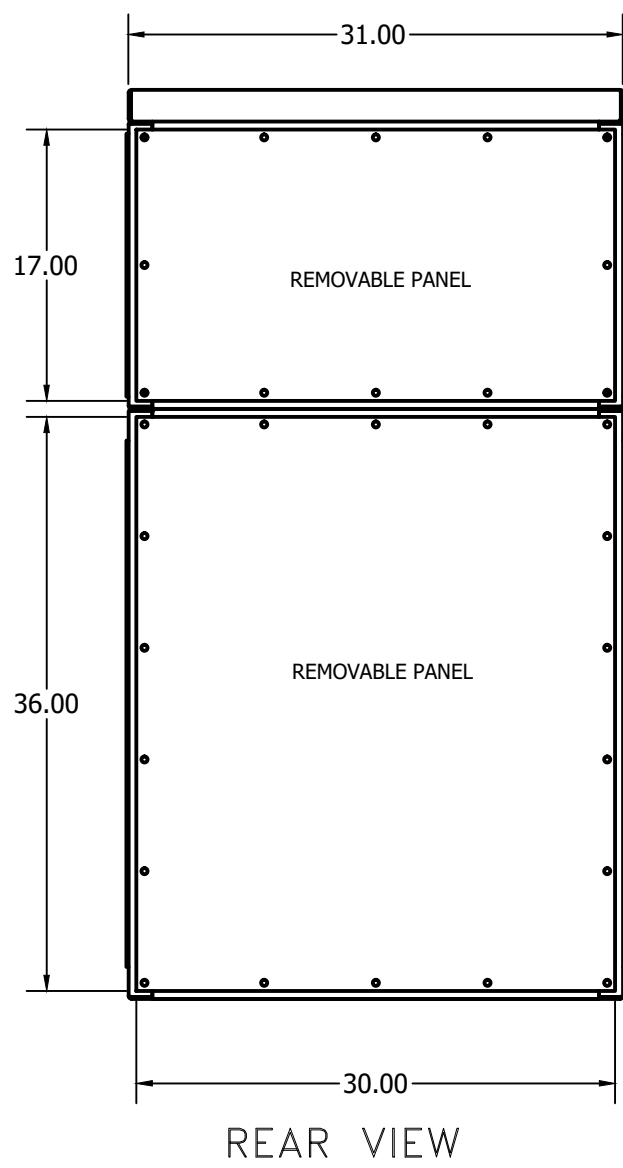
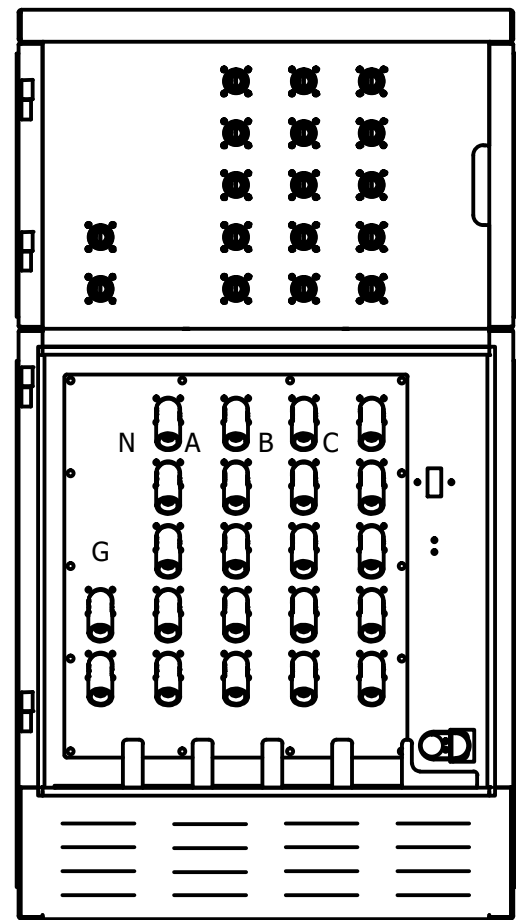


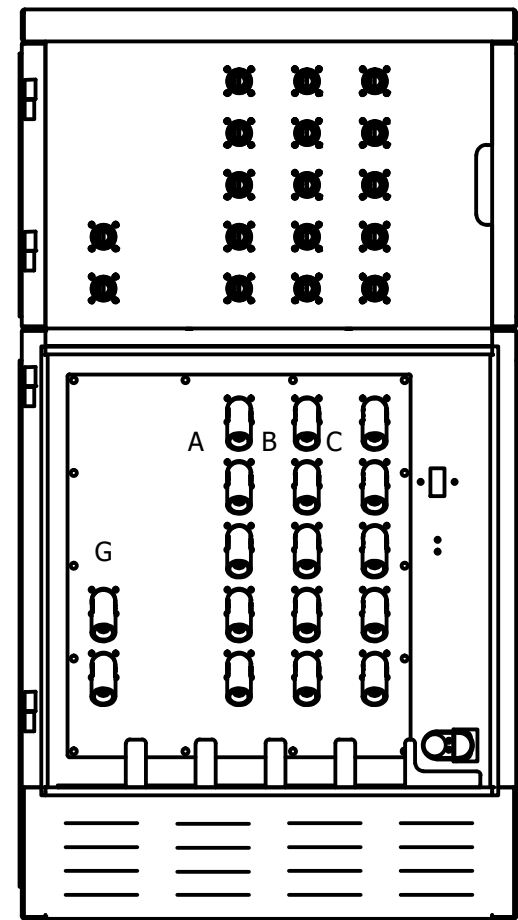
D



FRONT VIEW
WITH DOORS



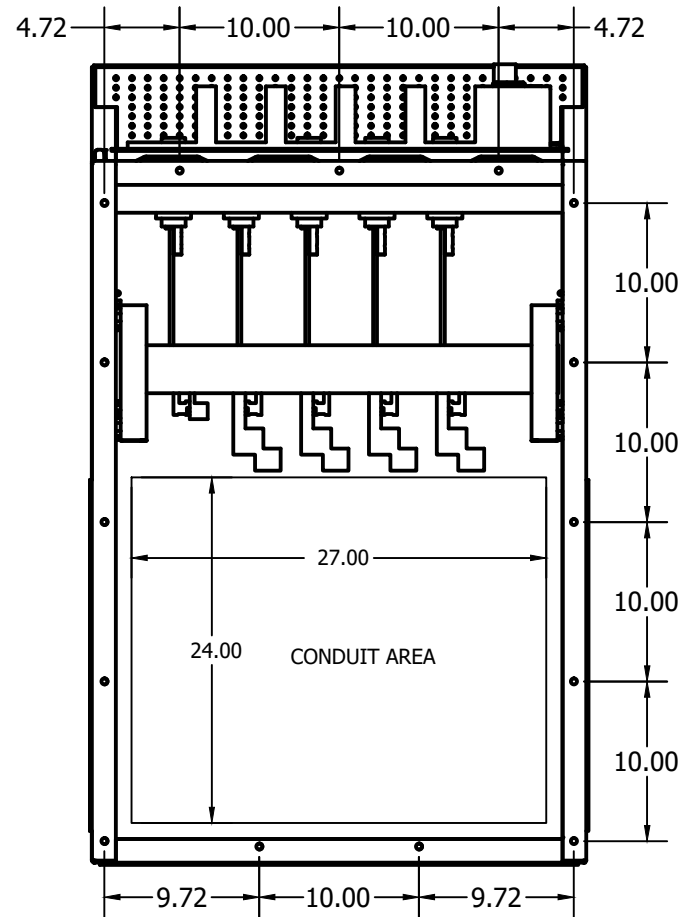
FRONT VIEW
3P+N+G
WITHOUT OUTER DOORS



FRONT VIEW
3P+G
WITHOUT OUTER DOORS

NOTES:

- BOTTOM INLET PANEL:**
 - FOR USE ONLY FOR CONNECTION OF A GENERATOR TO THE SOURCE TERMINALS OF A TRANSFER SWITCH, SUCH THAT THE INLETS ARE ENERGIZED FROM THE GENERATOR.
 - ETL LISTED TO UL1008, AS TRANSFER SWITCH ACCESSORY.
 - 16 SERIES MALE CONNECTORS.
- TOP OUTLET PANEL:**
 - FOR CONNECTION OF A LOAD BANK TO A POWER SOURCE.
 - ETL LISTED TO UL891, AS LOAD BANK OUTLET CABINET.
 - 16 SERIES RECESSED FEMALE CONNECTORS WITH FLIP COVERS.
 - PADLOCKABLE DOOR.
- PANEL RATINGS:**
 - 600V MAX, 50/60 Hz, 800A-2000A, 3PH/3W OR 3PH/4W, LISTED UL891.
- SHORT CIRCUIT RATING:**
 - 100K RMS SYMMETRICAL AMPS, 600 VAC MAX.,
- ENCLOSURE:**
 - TYPE 3R CONSTRUCTION, FOR OUTDOOR USE ONLY.
 - REMOVABLE HINGED DOORS WITH PADLOCK PROVISIONS.
 - FINISH, ANSI 61 GREY POWDER COAT.
- REMOVABLE GASKETED SIDE ACCESS PANELS FOR ADDITIONAL CONDUIT AREAS.**
- RECOMMENDED CLEARANCE:**
 - FRONT 24 TO 30 INCHES.
- REMOVABLE GROUNDING STRAP(S) ARE INCLUDED CONNECTING THE GREEN CAMLOCKS TO THE ENCLOSURE.**
- NO NEUTRAL TO GROUND BONDING PROVISIONS INCLUDED.**
- CAMLOCK CONNECTORS ARE SERIES 16 COMPATIBLE. 400A RATED.**
- DUAL PURPOSE QUICK CONNECT PANELS ARE NOT DESIGNED FOR SIMULTANEOUS OPERATION OF BOTH INPUT AND OUTPUT CONNECTIONS. CASTELL OR KIRK KEY LOCKS MUST BE INSTALLED ON GENERATOR CONNECTION DOOR AND PERMANENT GENERATOR BREAKER WHICH SERVES AS AN INTERLOCK BETWEEN PERMANENT GENERATOR AND PORTABLE GENERATOR.**



BOTTOM VIEW

CABLING:

- ALL UNITS SUPPLIED WITH MECHANICAL (SCREW TYPE) LUGS.
- LUGS ARE UL LISTED, TIN PLATED, ALUMINUM ALLOY COMPATIBLE WITH COPPER OR ALUMINUM CABLES. (SEE TABLE BELOW)
- LUG SCREWS ARE TIN PLATED, TORQUE TO 19 FT-LBS PER UL4868.
- LUGS ARE ATTACHED TO COPPER PLATED OR FLASHED BUS WITH FACTORY SUPPLIED BOLTS, TORQUED TO 30 FT-LBS.

STANDARD FEATURES:

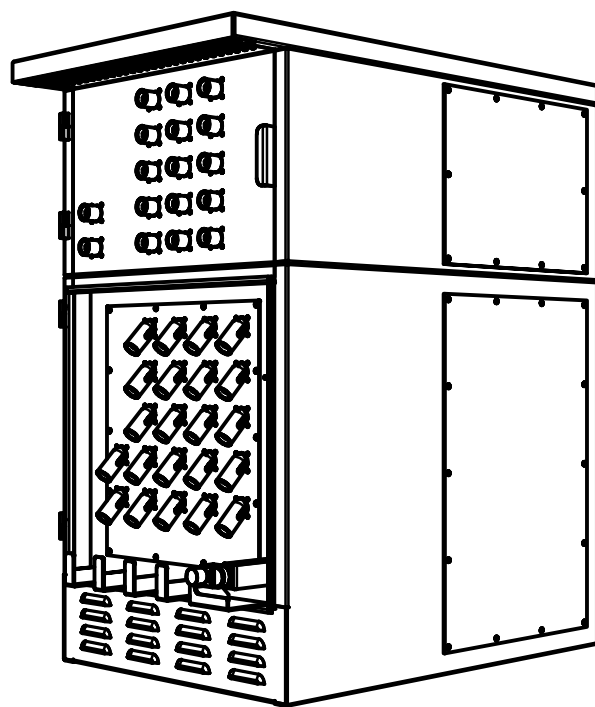
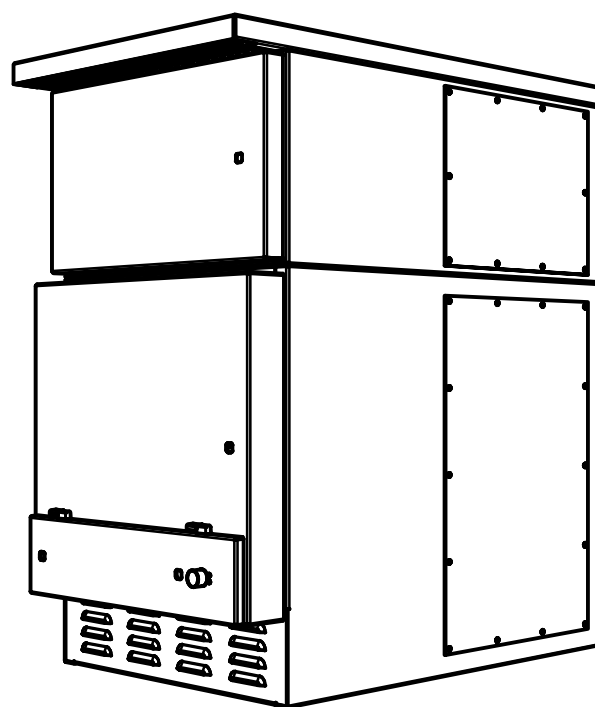
- CASTELL™ TRAPPED KEY INTERLOCK.
- PHASE ROTATION MONITOR FOR TEMPORARY POWER CONNECTION.
- TAMPER RESISTANT DOOR WHILE IN USE.
- TWO WIRE AUTO START TERMINALS.

OPTIONAL ACCESSORIES:

- ACC. 147QC - COLOR CODING FOR CANADIAN CAMLOK CONNECTORS
- THREE PHASE:

INSTALLATION:

- SURFACE TO WHICH THE PANEL IS TO BE INSTALLED AND THE INSTALLATION METHOD / HARDWARE MUST BE CAPABLE OF SUPPORTING THE WEIGHT OF THE PANEL (WEIGHTS SHOWN IN TABLE BELOW) AS WELL AS THE WEIGHT OF THE TEMPORARY CABLES TO BE ATTACHED TO IT.
- INSTALLATION IS TO BE PERFORMED BY QUALIFIED PERSONNEL IN ACCORDANCE WITH LOCAL AND NATIONAL CODES AND GOOD ENGINEERING PRACTICES.
- PANEL MUST BE LEVEL AND PLUMB TO ALLOW FOR PROPER DRAINAGE / WATER RUNOFF.



AMPS		MATERIAL		WEIGHT (lbs)		INPUT CAMLOCK QUANTITY		OUTPUT CAMLOCK QUANTITY		CABLE QUANTITY **		SIZE
		ALUM.	316 SS	ALUM.	SS	PHASE	NEUTRAL	GROUND	PHASE	NEUTRAL	GROUND	
800A	3P + G	1/8"	11 GA.	294	466	2	0	1	2	0	1	500 TO 800 MCM
	3P + N +G			322	501	2	6	1	2	0	1	
1200A	3P + G			302	477	3	0	1	3	0	1	
	3P + N +G			318	508	3	8	1	3	0	1	
1600A	3P + G			339	540	4	0	1	4	0	1	
	3P + N +G			342	615	4	10	1	4	0	1	
2000A	3P + G			355	621	5	0	2	5	0	2	
	3P + N +G			361	635	5	12	2	5	0	2	

* PHASE LUGS ARE TWO HOLES MOUNT QUAD BARREL LUGS,
NEUTRAL & GROUND LUGS ARE SINGLE HOLE MOUNT SINGLE BARREL LUGS.

** CABLE QUANTITY IS A COMBINATION OF INLET AND OUTLET CABLES.

CATALOG NUMBER											EXPLANATION OF CATALOG NUMBER CODES																				
CATALOG TYPE	CONNECTIONS	CONNECTOR TYPE	GROUND	INPUT NEUTRAL TYPE	POLES	AMPS	VOLT CODE	BLANK	OPTIONAL ACCESSORY	ENCLOSURE CODE	CONNECTIONS	CONNECTOR TYPE	GROUND TYPE		INPUT NEUTRAL TYPE		VOLTAGE CODES			OPTIONAL ACCESSORY	ENCLOSURE CODES										
											CODE	CODE	CODE	COLOR	CODE	COLOR	CODE	NOMINAL VOLTAGE	COLOR CODE	CODE	CODE	TYPE	DESCRIPTION								
3QC	D	C	A N	O A	3	800 1200 1600 2000	F N R	0	0 X Z	F S	D=DUAL	C=CAMLOCK	A=100% N=25%	GREEN	0=NONE A=100%	NONE WHITE	F N R	240 480 600	BLK,RED,BLU BRN,ORG,YEL BLK,BLK,BLK	0=STANDARD X=ACCESSORY Z=SPECIAL	F S	3R 3R	SECURE ENCLOSURE OUTDOOR, RAINPROOF, SLEET & ICE RESISTANT (ALUMINUM)								

281077		MKA	JPB	09/26/19
ISSUE				
REV. TO SHEET	ECN NO.	BY	APP.	DATE
PROJECT NAME:				
QUICK CONNECT PANEL				
800-2000 AMPS				
600V MAX, 3PH/3W OR 3PH/4W				
MANUFACTURING TOLERANCES TO BE IN ACCORDANCE WITH ASCO PROCEDURE MP-1-003. FOR PLASTIC PARTS SEE MP-1-005				
DRAWN BY	BY	DATE	ASSEM. REF. NO.	COMPUTER GENERATED DRAWING
CHECKED	MKA	09/26/19		SCALE 12 SIZE DS
PROJECT APPROVAL				DWG. NO. 1337396
FINAL APPROVAL	JPB	09/26/19		ECN NO. 281077 SHEET 1 OF 1
ASCOPower Technologies, L.P. FLORHAM PARK, NEW JERSEY 07932 U.S.A.				