

Guidelines for Specification of Data Center Power Density

White Paper 120

Revision 2

by Neil Rasmussen

> Executive summary

Conventional methods for specifying data center density are ambiguous and misleading. Describing data center density using Watts / ft² or Watts / m² is not sufficient to determine power or cooling compatibility with high density computing loads like blade servers. Historically there is no clear standard way of specifying data centers to achieve predictable behavior with high density loads. An appropriate specification for data center density should assure compatibility with anticipated high density loads, provide unambiguous instruction for design and installation of power and cooling equipment, prevent oversizing, and maximize electrical efficiency. This paper describes the science and practical application of an improved method for the specification of power and cooling infrastructure for data centers.

Contents

Click on a section to jump to it

Introduction	2
The various density specification methods	2
Deployment strategies	7
The model	11
Conclusion	16
Resources	17
Appendix	18

Introduction


The specification of operating power density for data centers and server rooms is a growing challenge for IT professionals. Specifying data centers at the traditional densities of 40-80 Watts / ft² (430 - 861 Watts / m²) will result in the inability to reliably deploy the latest generations of IT equipment. Specifying data centers at the 600-1000 Watts / ft² (6458 – 10764 Watts / m²) operating density of the latest generations of high density IT equipment will result in data centers that stress the limits of data center power and cooling technology and result in extraordinary capital costs as well as low electrical operating efficiencies.

The density planning problem is further exacerbated by the need to design a data center to operate through a number of IT refresh cycles where the nature of future IT equipment to be installed is unknown.

The historical method of specifying data center density in Watts / ft² provides very little useful guidance for answering critical questions that are faced by data center operators today. In particular, the historical power density specification does not answer the key question: “What happens when a rack is deployed that exceeds the density specification?” This is a very practical question because the typical data center today has a density rating of 1.5 kW per rack while typical IT equipment has a greater power density of 3-20 kW per rack.

A new and more complete method of specifying data center power density is needed. An improved method would address the following needs:

- Assuring compatibility with high density IT equipment
- Avoiding waste of electricity, space, or capital expense
- Providing a means to validate IT deployment plans to the design cooling and power capability

 Related resource
White Paper 46
Cooling Strategies for Ultra-High Density Racks and Blade Servers

This paper is focused on an improved method of specifying power density. Building data centers to implement power, cooling, racks, and management for high density applications is the subject of a number of other Schneider Electric white papers including White Paper 46, *Cooling Strategies for Ultra-High Density Racks and Blade Servers*.

The various density specification methods

The definition of power density is inconsistent in the literature which has resulted in significant confusion in the user communities. In order to better understand these definitions, consider the hypothetical 500 kW data center illustrated in **Table 1**:

Table 1

Hypothetical 500 kW data center

500 kW data center parameters	English	Metric
Total power consumed by IT equipment	500,000 Watts	
Total space consumed by IT equipment	2,800 ft ²	260 m ²
Back-room area devoted to cooling plant, switchgear, etc.	1,400 ft ²	130 m ²
Total data center floor space	4,200 ft ²	390 m ²
Footprint per IT rack enclosure	6.7 ft ²	.622 m ²
Quantity of rack enclosures	100	

Table 2

Different definitions for data center power density provide different values when applied to the same data center

Density definition	Calculation	Density	Explanation
The power consumption of IT equipment divided by the area occupied by all IT rack enclosures	500,000 Watts / (6.7 ft ² x 100 racks) 500,000 Watts / (0.622 m ² x 100 racks)	746 W / ft ² 8039 W / m ²	This method only includes the area taken up by the rack and does not include the access floor areas around the rack or the space taken by other Data Center Physical Infrastructure. This method yields density values much higher than the other methods. Commonly used by equipment manufacturers.
The power consumption of IT equipment divided by the area occupied by all IT rack enclosures and their clearances	500,000 Watts / 2,800 ft ² 500,000 Watts / 260 m ²	179 W / ft ² 1923 W / m ²	This is the most commonly used definition in the literature. An area value of 28 ft ² (2.6 m ²) per rack is typically used. This is an effective method for determining power and cooling distribution requirements. Commonly used by IT personnel.
The power consumption of IT equipment divided by the total data center floor space	500,000 Watts / 4,200 ft ² 500,000 Watts / 390 m ²	119 W / ft ² 1282 W / m ²	Total data center floor space includes IT equipment space and power and cooling utility room space. This method is valuable for planning floor space because it includes the back-room space which can consume a significant space in high density installations. Commonly used by architects.
The total power consumption of IT equipment and power and cooling equipment divided by the total data center floor space	(500,000 Watts + 295,000 Watts) / 4,200 ft ² (500,000 Watts + 295,000 Watts) / 390 m ²	189 W / ft ² 2038 W / m ²	This definition is commonly used for facility and utility planning because it uses the total data center footprint and the total mains power consumption. Cooling equipment is assumed to draw 265 kW including inefficiency in addition to 30 kW of power system inefficiency.
The power consumption of the rack	500,000 Watts / 100 racks	5 kW per rack	This definition is computed on a per-rack basis which eliminates much of the variation when defining power density.

All of the definitions for density in **Table 2** are used in published literature and specifications. The four definitions that use W / ft² or W / m² are ambiguous unless accompanied by a clear explanation of what is included in area and what is included in power. Yet published values for density routinely omit this information. This has led to tremendous confusion in the industry, and common miscommunication between IT personnel and facilities designers and planners. The data in **Table 2** clearly shows that **density specifications for the same facility can vary by almost a factor of 8 depending on the density definition used.**

The clearest statement of density is the “per rack” power consumption. This provides unambiguous guidance regarding the power and cooling requirements of a rack (for IT equipment, the rack’s electrical power consumption in Watts equals the cooling requirement in Watts). This paper will show that the per-rack power consumption has another major advantage in the specification of data center density – namely, that it is the most effective way to specify variations of density within a data center.

Real data centers do not exhibit a uniform power density. Some racks draw more electrical power and consequently generate more heat than others. Patch panel racks may draw zero power. Blade server racks may draw 20 kW or more power. Compounding this problem is the fact that IT equipment is constantly being refreshed, which means the power consumption of particular racks is subject to change over time. Conventional density specifications don’t

fully take in to account these power variations and as time goes on they become less effective.

Limitations of conventional density specification methods

The two examples below illustrate the severe limitations of conventional density specification:

In this first example, consider the case of a data center specified for $50 \text{ W} / \text{ft}^2$ ($538 \text{ W} / \text{m}^2$). Using the density definition of total IT load / total IT rack space and clearances, this equates to 1400 W per rack ($50 \text{ W} / \text{ft}^2 \times 28 \text{ ft}^2 / \text{rack}$). A data center constructed to have the capability to deliver a maximum of 1400 W of power and a maximum of 1400 W of cooling to every rack meets this requirement. There are many types of IT equipment, such as blade servers, that exceed 1400 W per chassis. **None** of these types of equipment could be deployed in a data center that has a strict 1400 W per-rack limit. The result is that this data center would be incompatible with many types of IT equipment. Furthermore, when a low power load is placed in a rack, like patch panels, the unused power is not available in other racks, since all racks have a 1400 W power and cooling limit. The overall result is an ineffective data center that is incompatible with many types of IT equipment, and furthermore is unable to effectively utilize the available rack space, the power capacity, or the cooling capacity.

In the second example, data center density is specified rack-by-rack. For each rack location the power and cooling are exactly specified. A design can be implemented to meet this specification, and the data center is completely characterized in advance. This is an ideal situation; unfortunately, almost no real data center can provide an exact rack-level power specification in advance. In real data centers the rack-level loads cannot be predicted over the lifetime of the installation. In the case where the actual IT deployment density is inconsistent with the original rack-level specification, there are serious consequences, including that when an IT load below the rack power specification is deployed the unused power is not available in other racks, since every rack has a specified power and cooling limit. The overall result is an ineffective data center that requires information about future IT deployments which is typically not obtainable.

These two examples are both commonly used methods for specifying density in data centers. The overall room-level specification and the exact rack-by-rack specification both have serious practical limitations resulting in implementations that fail to meet customer expectations. An improved approach to specification would retain flexibility and compatibility regarding IT loads but at the same time maximize electrical efficiency and the utilization of power, cooling, and space.

Density specification requirements

The preceding discussion suggests a number of requirements for an improved density specification method. The requirements are:

- **Predictability:** The density specification must permit the ability to determine the power and cooling capacity at any rack location for any proposed or actual installation of IT equipment.
- **Accept partially specified future requirements:** The density specification must not require that the exact power be known in advance for each rack location. In fact, IT equipment only lasts for a fraction of the life of a data center and is routinely changed out for new and different equipment.
- **Support power and cooling borrowing:** Available power and cooling that is not used at a specific rack should be available for use by other racks.
- **Minimize waste:** Electrical inefficiency should be minimized. Available power, cooling, and space should be utilized. Capital and operating costs should be minimized.

- **Support staged deployment:** The density specification must support a staged deployment, including the case where different stages may be at different densities, and where the data for future deployment stages is not known at the time of earlier deployments.

Although some of the above requirements are in conflict, they can serve as the foundation for establishing an improved method for specifying power density in data centers.

Practical constraints and options

Any practical method for the specification of power density must comprehend actual practical constraints and options involved in data center design. A number of these constraints and options are described, along with their impact on density specification:

- **Power distribution increments:** The cost and complexity of power distribution is a non-linear function of power. For example, an 18 kW three-phase power feed does not cost three times that of a 6 kW single-phase power feed. There are a number of optimal power capacities for AC power distribution due to matching of circuit breakers with receptacles and due to fault coordination of circuit breakers. These issues and the optimal power distribution circuits are described in White Paper 29, *Rack Powering Options for High Density*. Specifications regarding power distribution should be developed around these optimal circuit sizes, which vary depending on geographic location.
- **Air distribution limitations:** The distribution of air within a data center is a primary factor limiting rack power density. IT equipment requires between 100 and 160 cfm (47.2 - 75.5 L / s) of air per kW. Many data centers have either pre-existing raised floors or have ceiling height limitations that limit the height of any raised floor. In cases where the raised floor is part of the air distribution system there are practical limits to the volume of air which can be moved predictably under the floor, which limits the achievable average and peak rack power densities. For many pre-existing installations this limits the practical average power density to around 5 kW per rack. To exceed this density, additional supplemental air conditioning and / or distribution equipment must be installed. The consequence is that cost can grow rapidly above a critical power density, and an appropriate density specification would recognize and address this issue before it became a problem.
- **Weight:** Some facilities have floor loading limits. This is particularly true of existing raised floor installations. IT equipment that achieves very high power density typically also generates a heavy rack weight load. In some cases this is a very practical limit to the ability to deploy high density. The consequence is that a density specification should not futilely specify power densities that exceed the corresponding floor loading limit of the facility.
- **Reserved floor space:** Many data centers have floor area reserved for functions that are not specified for density. Such functions could include tape storage, operator workspace, or special access areas. The consequence is that a density specification model must reserve these areas and not depend on them to provide any function related to implementing high density power or cooling.
- **Ability to spread loads:** The ability to spread IT equipment physically within a data center is a practical option for most IT equipment today, due to the wide use of fiber-optic cabling. It is not necessary or desirable in many cases to deploy equipment at the full density it is capable of. Blade servers and 1U servers are examples of high density IT equipment that can readily be spread out between racks in order to decrease density. While packing racks with blade servers or 1U servers appears to optimize space usage, in many cases the benefit is illusory, and the costs associated with achieving the high density power and cooling to a rack usually greatly exceed the costs of consuming extra racks. The consequence is that a density model should not blindly specify density values based on equipment capabilities, but instead should take into account the possibility of spreading loads in order to optimize the cost and availability of the entire system.



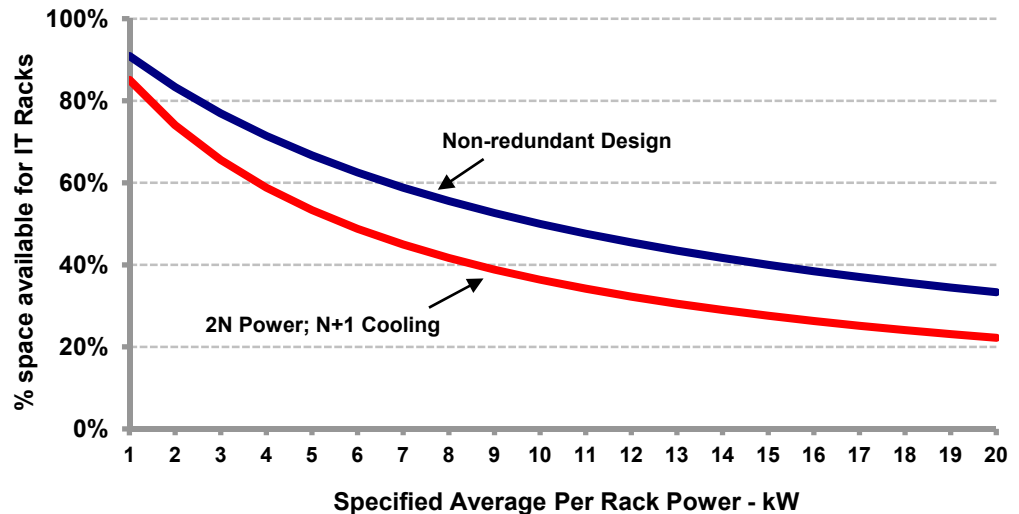
- Actual space constraints for a particular site:** Actual physical space constraints at a particular site greatly affect the overall value proposition of high density. Many existing facilities that were designed for low density find that the deployment of high density relieves space pressure; however, the benefits of compaction of the IT space are not large. On the other hand, there are facilities that are highly constrained by physical space for which floor area is extremely expensive or impractical to obtain. The consequence is that a density specification methodology must take into account the value of space and any hard limits on space.

Loss of space to power and cooling infrastructure

Power and cooling infrastructure consumes space that could otherwise be utilized by IT equipment. Sometimes, power and cooling equipment is moved outside of the space used for IT equipment and is located in a nearby room. However, the space consumed is still real and must be counted as an effective loss in achievable density. The space consumed by power and cooling infrastructure can be expressed in equivalent racks, and this space increases as the need for power and cooling capacity increases. This effect is shown in **Figure 1**.

Figure 1

Effect of average rack density specification on the fraction of available space for IT racks



Note: the curves on this table are derived from the formulas shown in the appendix.

This clearly shows that the space that can be utilized by IT equipment declines as the specified average power per rack of IT equipment (power density) increases. The horizontal axis is the specified average per rack power in the room. The vertical axis is the fraction of the available rack locations in the room that are lost due to the space consumed by power and cooling infrastructure including UPS, power distribution units, and computer room air conditioners. The lower curve in **Figure 1** is for a system with dual path (2N) power and redundant (N+1) computer room air conditioners. This is a typical design for high density applications. Note that for typical data centers in service today operating at 1.5 kW per rack, approximately 15% percent of the floor space is lost. However, as the density specification increases there is a substantial loss in space. When the specified average per-rack power exceeds 7kW, more than 50% of the space is consumed by power and cooling equipment and is therefore not available for use by IT racks. It does not matter if the actual density is much lower than the specified density – the space is nevertheless consumed by the power and cooling equipment. This leads to a guiding principle to high density design: **Specifying a data center for a higher density than is actually required will unnecessarily reduce the space available for IT equipment.** This is a very serious penalty, in addition to the penalties of increased cost and operating expense. For this reason it is essential that density

be planned effectively, and, where possible, that high density power and cooling systems be deployed only as needed.

Subdividing space into density areas

The requirements stated earlier clearly establish the need for the ability to specify power density differently in different areas within the data center. This is required to enable staged deployment where successive stages may vary in density. The alternative, which is to specify the entire data center for the maximum expected future load is completely impractical since it will needlessly increase capital costs and operating costs by a factor which may range from 3X to 8X, and drastically reduce electrical efficiency.

Even when there is only a single-stage deployment, there may be significant advantages to segmenting a data center into density areas. For example, the difference in density between blade servers and storage is significant and a data center that separates servers and storage could gain a significant advantage in designing distinct zones with different density specifications, even though the total power load of the data center is not changed. If the location of servers and storage racks is random and unknown in advance, then the power and cooling **distribution** systems must be sized to deliver maximum density at any location. However, if a lower density zone for storage systems is defined in advance, the power and cooling distribution systems can be reduced in capacity for that zone. The advantage would be reduced capital and operating expense, along with improved electrical efficiency.

Density areas within a data center can be defined on a floor plan by dividing racks into different zones. However, **we propose as a best practice that area divisions not be** arbitrary but always be divisions by rows, where a row is a group of racks of any size arranged side by side. The choice of rows as the preferred unit of defining density areas is due to:

- Many rack power distribution architectures are row based
- Many rack cooling distribution architectures are row based

This means that the row will be the preferred and most cost effective level at which to define density requirements, and the preferred increment of deployment. For this reason, the remainder of this paper will focus on the row as the level at which density variations for zones are defined.

Deployment strategy

The density specification requirements must comprehend IT loads that change over time and also comprehend staged deployments. Some assumptions must be made regarding if and how the power and cooling infrastructure will change over time.

It is unreasonable to assume that existing power distribution and air distribution equipment will change in response to changing IT loads. Changes to these systems, such as working on live electrical circuits or water pipes, may require or risk downtime to groups of racks or even the entire data center. It is well documented that human error is the primary cause of downtime in data centers and that changes made to operating equipment are a primary downtime contributor. **For this reason it is a best practice that power and cooling distribution equipment for a row or zone be installed and then not changed or reconfigured during the operating lifetime of that row or zone.**

The practical implementation of this best practice is a deployment strategy that can be summarized as follows:

- Lay out rows of racks / enclosures on the floor plan using standard aisle spacings

- Determine the design density specification for a row and then build a complete row to support that density specification.
- If equipment is to be deployed that is within the parameters of the design specification for an existing unfilled row, it may be deployed in that row.
- If equipment is to be deployed that is at a substantially different density than that of an unfilled row, **do not modify the power or cooling systems in order to deploy it in that row**, but rather construct a new row designed for the higher density.
- Over time, rows that are lightly populated should be targeted for a complete tear-down and rebuild at a different density specification that is more consistent with current needs.

The use of this strategy is highly recommended as it minimizes the opportunity for human error related to change work on operating rows within the data center. This practical and effective strategy does place a constraint on the model for density specification, in that the power and cooling distribution for a row system does not change after installation.

Note that there are some power and cooling distribution products on the market that permit reconfiguration of the power and cooling architecture without the risk of downtime. For example, the InfraStruXure system does allow for:

- Changing UPS power output by adding pluggable modules
- Changing the type and capacity of receptacles in a rack via hot-swappable rack PDUs
- Adding supplemental cooling airflow capacity to a rack via a plug-in rack-mounted devices

This type of equipment allows for some additional flexibility after installation and is particularly beneficial in smaller installations where staged row deployment is not feasible.

Peak vs. average density within a row or zone

Although having loads of exactly the same power in every rack would simplify density specification, the prior discussions suggest that this is an impractical goal with little resemblance to real-world installations. In fact, rack densities can be expected to vary between zero (patch panels) and 30 kW (high density blade servers). This variation has a dramatic effect on the nature of effective density specification.

Within a given row or zone of racks where the power per rack varies, the average rack power will be less than the peak rack power. The important ratio of the **actual** peak-to-average rack power within a row will therefore always be greater than or equal to one. It is instructive to consider a number of alternative methods to specify power density for a row design that will support a known collection of racks of various per-rack power consumptions.

Design all racks in row to peak. One approach to specifying a row density would be to specify that any and all racks in the row have a power and cooling density capable of the maximum anticipated peak rack power. In this case, the total cooling and power capacity must be sized assuming all racks could draw the maximum power. This will necessarily cause a substantial oversizing of the power and cooling capacity, which will lead to increased capital and operating costs, as well as poor electrical efficiency. These penalties will be zero if the peak-to-average per-rack power consumption is equal to one, but will become substantial if the peak-to-average per-rack power consumption within the row is 1.5 or greater. Furthermore, specification at the maximum worst case power does not take into account the option that the loads that created the maximum peak rack power could have been spread out, which could have reduced the peak-to-average per-rack power. In general, specifying overall

row density for the worst case peak rack power is sub-optimal unless the peak-to-average rack power ratio is close to 1, which is rarely the case in typical installations.

Design all racks in row to average. Another approach would be to specify all racks at an average power density. Like the previous approach, this simple method is not satisfactory, but for different reasons. This method requires that any rack loads that attempt to exceed the average have equipment removed until they are equal to or below the average. Furthermore, this method has an additional subtle limitation – any racks that have an actual density below the specified design density give rise to unused power and cooling capacity that cannot be used to create additional capacity for other racks. This is because the row was only designed to power and cool each rack up to the average. Consider the following scenario: An IT operator wants to deploy a 4 kW blade chassis in a row designed for 2 kW per rack. One could argue that it is feasible to re-route a 2 kW power whip from an unused rack (if available) to the blade chassis. However, cooling this 4 kW load becomes questionable because the cooling system wasn't designed to cool racks above 2 kW. Furthermore, there now remains a rack that is unusable because its power was taken by another rack.

Comparing the alternative scenarios above with the requirements suggests that a key element of an effective density specification is that **the ratio of peak to average rack power in a row should be specified and it should be greater than one**. The selection of the appropriate peak-to-average rack power ratio will be dependent on the expected variation among the actual racks. This relationship is shown in **Figure 2** for typical data center design constraints and assumptions:

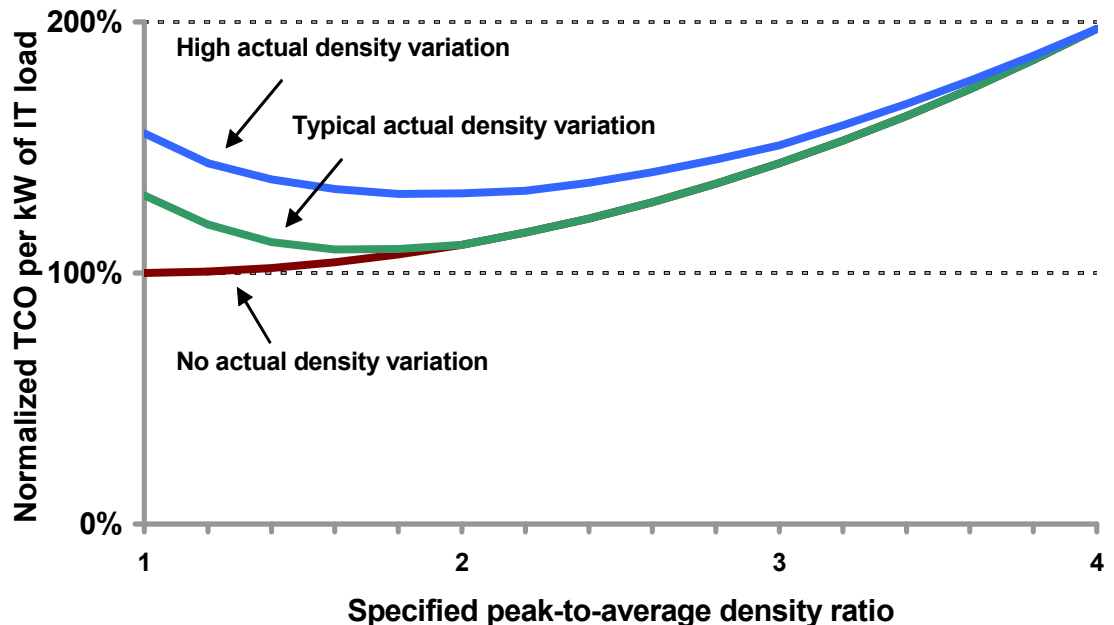


Figure 2

Effect of peak-to-average rack density specification on power and cooling total cost of ownership for different degrees of actual density variation among racks

Figure 2 shows how the peak-to-average rack density specification affects the normalized TCO expense¹ related to power and cooling infrastructure per kW of installed IT equipment for three different scenarios of actual rack power variation. The data shows that for the case where all racks have the same power consumption, TCO is optimized (lowest) when the peak-to-average rack density ratio is equal to one. This effect is explained because specifying additional peak power density capability adds power and cooling distribution costs but

¹ TCO expense includes capital cost of power and cooling equipment and its 10-year service, space, and electricity cost. These will vary \$50K - \$90K per rack depending on design and fractional utilization. Note that UPS and chiller expenses are not affected by peak-to-average ratio - variations in TCO are driven by the costs of power and cooling distribution systems.

does not add any value when all racks have the same power consumption. However, when the power variation among the actual installed racks increases, there is a substantial penalty when the peak-to-average specification is not increased. This is due to stranded unusable power and cooling capacity, combined with the need to increase floor space for a given IT load. The consequence is that a peak-to-average rack density ratio of greater than one optimizes TCO for real-world installations.

This leads to another key element of an effective data center density specification: **The peak-to-average rack power density ratio within a row should be approximately two for typical designs, and that if the expected actual peak-to-average rack density variation within a row is greater than 2 then the spreading of the highest density IT loads among racks to limit the peak-to-average ratio, or the reassignment of outlying loads to other rows, is recommended.**

Rules-based density specifications

When the average and peak rack power densities for a row or zone have been specified a design to predictably implement that specification is possible. In the case where the peak rack power is near the average value, the implementation is straightforward. However, when the peak-to-average rack power within a row becomes on the order of 1.5 or larger, the challenges and costs of implementing the design increase. The problem of assuring that any racks can operate at the peak rack power so long as the average power is not exceeded can be a serious constraint in installations that use raised floor air supply systems. The overall achievable average and peak power densities can be increased if a rules-based density deployment is permitted within the density specification.

To understand the problem solved by rules-based specifications, consider the case of a row to be installed in an existing raised floor cooling system with the recommended peak-to-average rack power density of 2. From the point of view of the power system, each rack must be provided with power distribution at the peak rack density, but supplied by a PDU or UPS that is rated for the average rack density multiplied by the number of IT racks. This is simple to implement. However from a cooling perspective, each rack does not have a well defined air distribution system that is rated at twice the average rack density. Racks operating at a density above the average must borrow underutilized capacity from neighboring racks that operate at below the average rack density. In the case of the raised floor which has limited airflow capacity, this means that separating high density racks from each other within the row greatly reduces the local overload on the cooling distribution system. If a specification includes the ability to establish rules regarding the location of high density racks within the row, then higher peak and average densities can be achieved within the constraints of the system.

An example of a simple rule would be that a rack can only exceed the average power rating by the amount that the average consumption of the adjacent racks is below the average. More sophisticated rules could be used to maximize the predictable power density that can be achieved in a given installation, and these rules could be implemented in the power and cooling management system.²

Specifying density options for future growth

Many data centers are not built out completely at one time, but evolve and grow over time. In these cases, it is not always desirable or practical to specify density in advance for rows or zones not yet planned. Any practical method for specifying data center density must comprehend future requirements for which density is difficult to predict, and preserve future

² The implementation of cooling density rules within a management system are subject to patents pending by Schneider Electric

density options as possible. Ideally, expenses and commitments related to the deployment of power and cooling infrastructure are delayed for as long as possible. Furthermore, the later expansion of the data center does not compromise the availability of the IT equipment that is already operating.

A commonly used option is to build out all the power and cooling infrastructure in advance to support a pre-defined power density. This has the advantage that the pre-installation of this equipment ensures that during future IT deployments major utility work does not need to be performed on the live data center. However, this approach has many major downside costs, including:

- Future IT density exceeds the density of the power and cooling infrastructure and therefore cannot be effectively deployed
- Future IT density is less than the density of the power and cooling infrastructure and therefore major infrastructure investments are wasted
- The facility never expands, or expansion is forced to occur in another location due to regulations or other business issues, and therefore major infrastructure investments are wasted
- The near term loading on the data center is much lower than the rated power and cooling infrastructure, leading to major decreases in electrical efficiency and significant and unnecessary electricity costs
- The advance installation of currently unneeded power and cooling infrastructure drives unnecessary capital equipment and maintenance contract costs

An effective model for specifying density would avoid these issues by supporting a design and implementation approach of modular and scalable power and cooling infrastructure. Such an architecture would be based on the up-front installation of main utility feeds such as row or zone level power feeds and cooling feeds, in conjunction with deferred installation of expensive power and cooling infrastructure such as UPS systems, PDUs, racks, power distribution within the row, air conditioners, and air distribution equipment. The specific density to be supported within a zone or row would be a decision that would be deferred to the time of deployment, and the power and cooling infrastructure would be deployed on a row by row basis. The InfraStruXure system is one practical example of such architecture.

This discussion leads to another key element of the proposed density specification method: **Rows or zones within a data center that are to be deployed in the future should be planned for a worst case high density value and primary feed wiring and piping should be installed up-front to support this density; however the actual selection of power and cooling equipment for rows should be deferred until the deployment density and plan are defined.** In this way the primary cost drivers of the power and cooling infrastructure are rightsized to the actual application, and deployed where and when needed. This greatly reduces capital costs, operating costs, and results in a much more energy efficient data center.

The model

A model for the specification of power density that meets the requirements identified earlier and comprehends the various practical constraints and limitations can now be constructed.

The model includes the following key elements:

- A data center physical layout is created which is based on rows of racks or enclosures
- For each row, the data from **Table 3** is required

Table 3*Data required at the row level*

Data	Units	Description	Primary use
# rack locations	#	The number of rack locations in a row. Includes all locations, some of which may ultimately be consumed by power or cooling equipment, depending on architecture	To determine the total power and cooling requirement for the row
Rack average in row	kW / rack	The average per-rack power density exhibited by IT racks in a specified row. Must be specified for each row in the room	To determine the bulk power and air distribution requirements for a row
Rack peak in row	kW / rack	The peak per-rack power density exhibited by any single rack within specified row. Must be specified for each row in the room	To determine the design of the rack level power and cooling distribution system

- For rows to be deployed in the future, maximum realistic values for average and peak rack power should be specified, with the understanding that these values can be reduced prior to deployment with only a small penalty from oversizing the primary feed wiring and piping
- From the above information, the data in **Table 4** can be computed

Table 4*Density data which is computed*

Data	Units	Description	Primary use
Total IT racks available	#	The number of IT racks available in the design, net of any rack locations allocated for power or cooling infrastructure	To determine the total power IT rack space available for planning purposes
Total initial IT power requirement	kW	The total initial IT load, not including future deployments, that the power and cooling systems must support	To determine immediate power and cooling infrastructure sizing and investment required
Total final IT power requirement	kW	The ultimate worst case IT load that the power and cooling systems must support	To determine the sizing of key utility infrastructure including power switchgear, wiring, and cooling plumbing
Peak power density	kW / rack	The highest power density within any row	To establish the cooling distribution architecture
Average data center power density	kW / rack	The summary density attribute for the data center	To allow conversion to other common metrics such as W / ft ² or W / m ² . Such a conversion is subject to selection of definition from Table 2

The most complex problem in defining density using this method is the determination of the rack locations that are required for power and cooling infrastructure and are therefore unavailable for IT equipment. A value of 1 rack location consumed by power and cooling infrastructure for every 15 kW of IT load is a reasonable guideline value for density estimation. This guideline is based on the average power and cooling requirement, including clearances, experienced in existing 1N and 2N data center installations. The exact value will

depend on the power and cooling architecture selected, room constraints and the guidelines provided by the system supplier. For example, in the case of the InfraStruXure data center system, Schneider Electric provides computer aided design tools which perform this calculation for each room design.

Practical guidelines for use

The use of the described model for density specification does not itself assure optimal room design. User choices regarding room layout, the selection of the room itself, and user estimates for density requirements can all affect the success of the ultimate installation. However, the use of the model does provide many key benefits including:

- It provides a more complete and accurate description of data center density than other commonly used specification methods
- Data centers built to the specification will have more predictable performance
- The model is specific enough that costs, including capital and operating costs, can be rapidly estimated, speeding the design cycle and permitting alternate scenario analysis
- It supports a system of modular scalable data center deployment, which can dramatically reduce TCO and improve electrical efficiency

Practical applications of the described density specification method include:

- Comparing TCO associated with alternate data center sites or room locations
- Estimating costs associated with increasing density in a planned or existing data center
- Providing a specification that clearly establishes density expectations in a form comprehensible to IT users, so that IT users, data center operators, and data center systems suppliers establish the same expectations

Implementation of this density specification method into computer aided data center design tools can facilitate and automate the specification and design process.

Example of a data center specification

An example illustrates how the model can be used to specify an actual data center. In this case a room is provided for a server consolidation project. All UPS, power distribution, and cooling systems are to be located within the room and do not currently exist. Due to headroom no raised floor exists or is feasible. A mixture of networking equipment is to be deployed, including blade servers, rack-mount servers, storage, and networking equipment. The blade servers are to be located together and not spread out. The current requirement is estimated to fill only half of the provided room. The remainder of the room is to be reserved at 20% higher than the current deployed density, with the capability to support at least 3 racks of future blade servers estimated to draw 25 kW per rack. The availability requirement is for a non redundant power and cooling system.

The outline of the room is shown in **Figure 3**, along with a proposed rack layout, yielding a total of 41 rack locations in the room. It is decided that rows 1, 2, and 3 will be deployed immediately and rows 4, 5, 6, and 7 will be deployed at a later date. A review of the current planned deployment allows some assignment of like-powered equipment to rows to reduce the peak to average ratio of the rows, and locates the blade servers together as required in row 2. The row-level specification of rows 1, 2, and 3 is entered into **Table 5**.

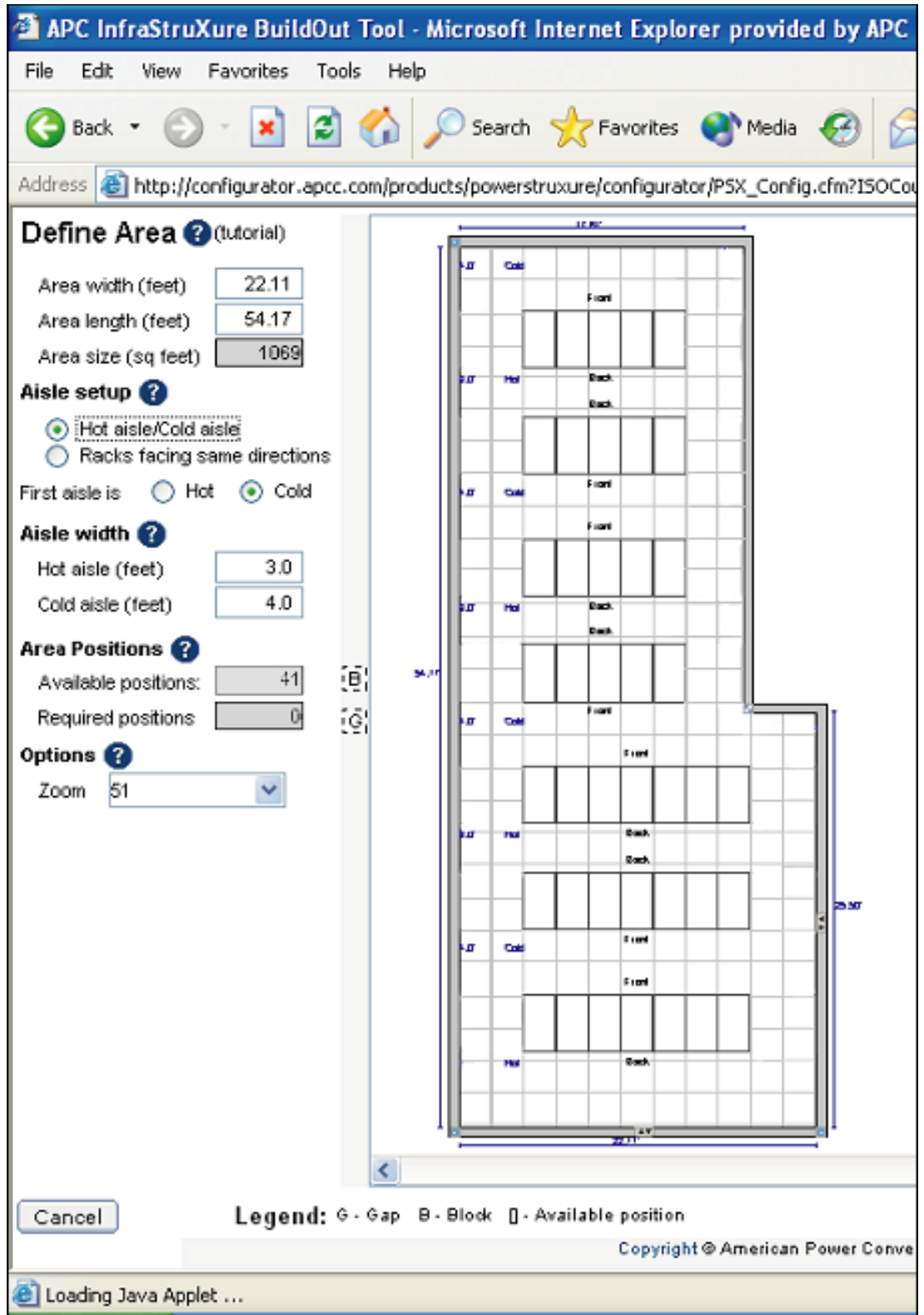


Figure 3

Floor plan layout for the proposed data center, with proposed rack layout (Image from InfraStruXure Build-Out Tool software)

Table 5

Row density data for proposed data center

Data	Units	Row 1	Row 2	Row 3	Row 4	Row 5	Row 6	Row 7	Overall
# rack locations	#	7	7	7	5	5	5	5	41
Rack average in row	kW / rack	2	5	3	4	4	4	4	3.7
Rack peak in row	kW / rack	4	15	6	15	15	15	15	15

From this information the average density of the first deployment can be computed to be $(2*7 + 5*7 + 3*7) / 21 = 3.3$ kW per rack. If the additional rows are planned at 20% higher density (without yet specifying the details of the rows), then the overall average data center density can be computed to be $(2*7 + 5*7 + 3*7 + 4*5 + 4*5 + 4*5 + 4*5) / 41 = 3.7$ kW per rack. Specifying the future undefined rows with a high peak density value of 15 kW provides significant flexibility with regard to later changes to the design of those rows. **Table 5** illustrates these future specifications for rows 4, 5, 6, and 7. The only consequence to placing a high peak value on future rows is that the primary cooling and power supplies are conservatively sized.

Using **Figure 1**, a first estimate of the ultimate space consumed by power and cooling equipment will be 30% at an average rack density of 3.7 kW which is equivalent to 13 racks (30% x 41 racks). From this, the total ultimate number of IT racks available, based on the density specification, will be 70% or 28 racks. The density specification for our proposed server consolidation project consists of **Table 5** along with the computed values of **Table 6**.

Table 6

Computed room-level data for the proposed data center

Data	Value	Units	
Total IT racks available	28	#	Some of the space in the data center is consumed by power and cooling equipment
Total initial IT power requirement	47	kW	Initial installation of power and cooling equipment must support at least 47 kW of IT load. Using Figure 1 , based the density of Row 1, 2 and 3, the number of IT racks spaces available is 6, 4, and 5 respectively $(6 \times 2 \text{ kW / rack} + 4 \times 5 \text{ kW / rack} + 5 \times 3 \text{ kW / rack} = 47 \text{ kW})$
Total final IT power requirement	104	kW	The remainder of the power and cooling equipment is deferred until the remaining rows are determined but the key utility infrastructure including switchgear, wiring, and cooling plumbing must be sized to support the final 104kW of IT load $(28 \text{ IT racks} \times 3.7 \text{ kW / rack} = 104 \text{ kW})$
Peak power density	15	kW / rack	Cooling at this high density narrows the options available and increases the cost. A further attempt to spread these peak loads should be considered before committing the design at this density
Average data center power density	3.7	kW / rack	This data center, as specified, is more than twice the density of the average existing data center. Less than 2% of data centers today achieve this density

From this point, a design can be created. The next step would be to establish the actual locations of the power and cooling equipment, based on the nature of the equipment and the system design. This process based on complex mathematical models of the specific equipment, along with optimization rules and customer preferences. This process is unique for different power and cooling equipment vendors and will not be discussed here. Ideally, the design would only call for the power and cooling equipment required at the initial deployment, but would anticipate and facilitate the installation of power and cooling equipment in the future to meet the partially specified future deployment plan. For example, by assuring that during the first deployment phase, the primary power wiring and cooling piping are pre-installed to the future racks. Note that although the future rows are currently specified with average and peak rack density values, these values can be changed any time prior to the future deployment as long as the total power of the entire area does not exceed the currently planned value.

Conclusion

Conventional methods for describing data center density are primitive, incomplete, and ambiguous. These legacy methods are unable to provide planning guidance to assure predictable data center power and cooling performance with the high power density of the latest generations of IT equipment.

This paper outlines the requirements for density specification and introduces a new method for density specification. This method provides actionable specifications that clearly communicate requirements between IT staff and facilities designers, and facilitates the creation of data centers that are predictable and cost effective, and electrically efficient.



About the author

Neil Rasmussen is a Senior VP of Innovation for Schneider Electric. He establishes the technology direction for the world's largest R&D budget devoted to power, cooling, and rack infrastructure for critical networks.

Neil holds 19 patents related to high-efficiency and high-density data center power and cooling infrastructure, and has published over 50 white papers related to power and cooling systems, many published in more than 10 languages, most recently with a focus on the improvement of energy efficiency. He is an internationally recognized keynote speaker on the subject of high-efficiency data centers. Neil is currently working to advance the science of high-efficiency, high-density, scalable data center infrastructure solutions and is a principal architect of the APC InfraStruXure system.

Prior to founding APC in 1981, Neil received his bachelors and masters degrees from MIT in electrical engineering, where he did his thesis on the analysis of a 200MW power supply for a tokamak fusion reactor. From 1979 to 1981 he worked at MIT Lincoln Laboratories on flywheel energy storage systems and solar electric power systems.



Resources

Click on icon to link to resource



Cooling Strategies for Ultra-High Density Racks and Blade Servers

White Paper 46



Rack Powering Options for High Density

White Paper 29



Browse all white papers

whitepapers.apc.com



Browse all TradeOff Tools™

tools.apc.com



Contact us

For feedback and comments about the content of this white paper:

Data Center Science Center
DCSC@Schneider-Electric.com

If you are a customer and have questions specific to your data center project:

Contact your **Schneider Electric** representative

Appendix

Determining the fraction of the data center rack space available net of power and cooling equipment

The graph of **Figure 1** is derived by establishing a balance between the load power and the power / cooling equipment capacity, where

PI = IT equipment power

PN = Power and cooling equipment capacity

DI = Density of IT equipment, in kW / rack location

DN = Density of Power/Cooling equipment, in kW / rack location

RN = # of rack locations used by Power and Cooling equipment

RI = # of rack locations used by IT equipment

RT = # of total rack locations in the space

$$P_N = P_I$$

$$R_N D_N = R_I D_I$$

$$R_N = \frac{R_I D_I}{D_N}$$

However, $R_N = R_T - R_I$

Therefore, $R_T - R_I = \frac{R_I D_I}{D_N}$ $R_T = R_I \left(1 + \frac{D_I}{D_N} \right)$

$$\frac{R_I}{R_T} = \frac{1}{\left(1 + \frac{D_I}{D_N} \right)}$$

This final formula generates the function of **Figure 1**. Values for DN depend on the specifics of the power and cooling equipment used as well as the redundancy configuration.