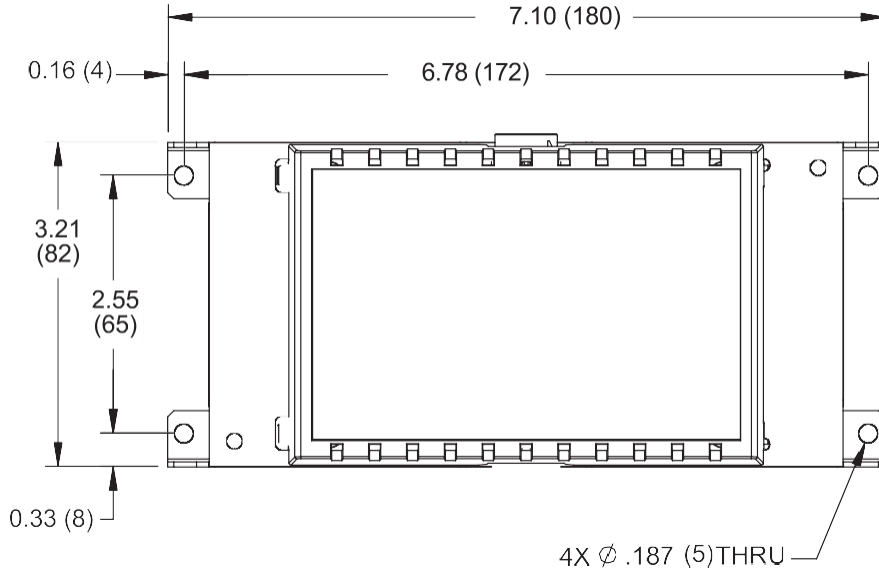


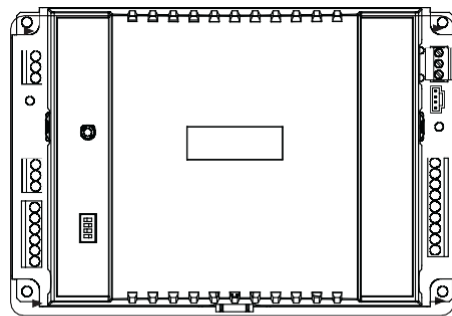
# xPb Expansion Module Reference

30-3001-883 Rev E.1

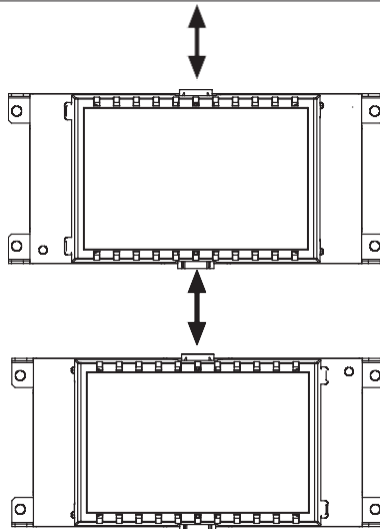


**Note:**

This enclosure is intended for field installation within the enclosure of another product.



**bCX1 Series Controller  
or  
ACX 57xx Series Controller**



**Modules Plug Together**

**Power must be disconnected from controller before installing any xPB module.**

Adding expansion modules to the bCX1 96xx or ACX 57xx controller requires the controller to be cold started before it will recognize the module.

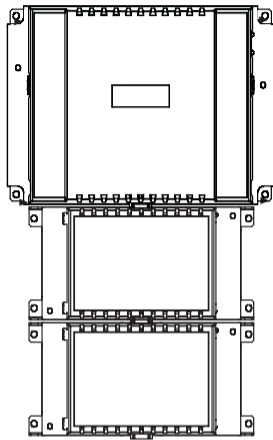


**WARNING:** This product can expose you to chemicals including lead which is known to the State of California to cause cancer and which is known to the State of California to cause birth defects or other reproductive harm. For more information, go to [www.P65Warnings.ca.gov](http://www.P65Warnings.ca.gov)

**UL 294 7<sup>th</sup> Edition Compliance**

UL 294 Feature	Level
Destructive Attack	I
Line Security	I
Endurance (Access control)	IV
Standby Power	I

# Expansion Limitations



## Basic Expansion Limitations

The number of expansion modules is limited by the controller firmware and the capacity of the power supply current available from the controller. The firmware supports a maximum of two modules plus the xPDisplay as long as the power consumption does not draw more current than the controller can supply.

bCX1 Series Controllers: Maximum current available is 400mA.  
 ACX 57xx Series Controllers: Maximum current available is 400mA.

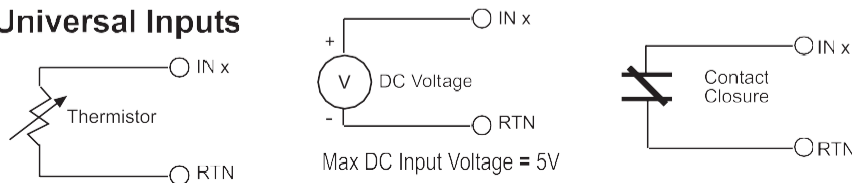
Module	Function	Current Draw @ 24VDC
xPBA4	4 Universal Inputs, 4 Analog Voltage Outputs	60mA
xPBD4	4 Universal Inputs, 4 Relay Outputs	125mA
xPDISPLAY	Keypad/Display Module	70mA

## Normal CPU LED Pattern

Expansion module connected closest to the controller will blink at 2Hz rate.  
 A module connected to the first one will display two short blinks every two seconds.  
 Incompatible or malfunctioning modules may display a steady ON or a short ON then completely OFF.

# I/O Connections

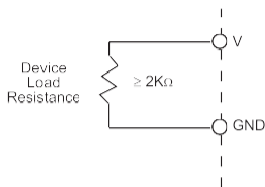
## Universal Inputs



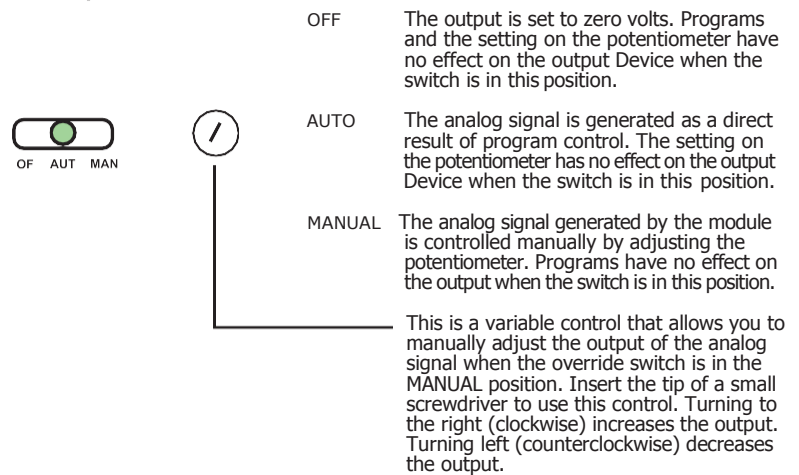
Max DC Input Voltage = 5V

## Analog Outputs

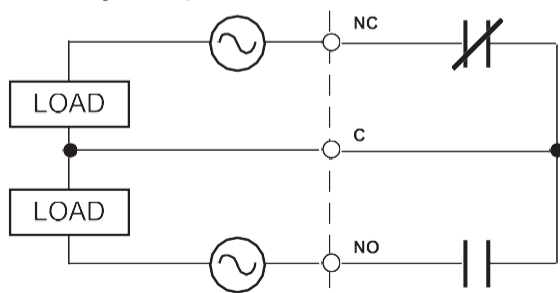
Voltage Output  
 0 - 10VDC --- , 5mA max.



## Output Override Control



## Relay Outputs



Contact Rating: 3A @ 24 VAC ~  
 3A @ 30 VDC ---

## Output Override Control

