

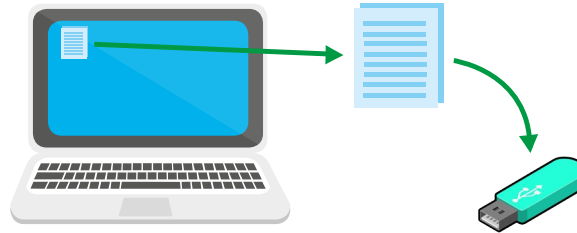
# SIGMA<sup>LT</sup> Control

## FIRMWARE UPDATE PROCEDURE

Making sure the firmware is up to date on SIGMA<sup>LT</sup> load banks is important to maximise load testing capabilities and to ensure correct operation. To obtain the upgrade files please visit [www.ascopower.com/firmware](http://www.ascopower.com/firmware)

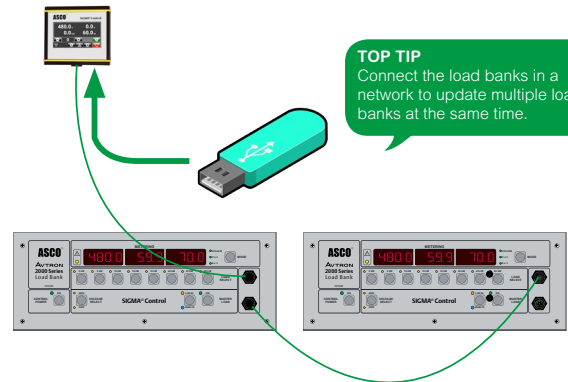
### UPDATING FIRMWARE ON THE LOAD BANK

1. Add upgrade file 'loadbank.sig' to a USB flash drive. Ensure no other files with '.sig' extension exist on the USB flash drive.



**TOP TIP**  
If 'loadbank.sig' and 'handheld.sig' update files are on the same USB flash drive 'loadbank.sig' will take priority.

2. Connect the Hand-held to the Load Bank, insert the USB drive into the Hand-held and power up the load bank.



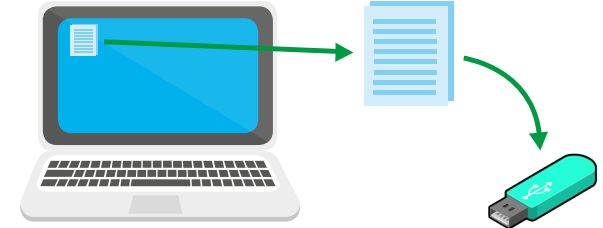
**TOP TIP**  
Connect the load banks in a network to update multiple load banks at the same time.

3. After the load bank start up procedure has been completed the following screen will appear on the hand-held. Press Update.

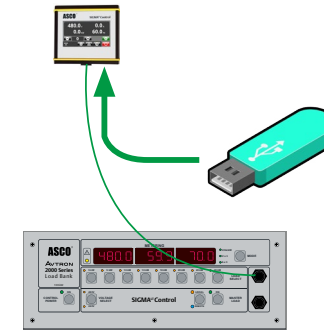


### UPDATING FIRMWARE ON THE HAND-HELD

1. Add upgrade file 'handheld.sig' to a USB flash drive. Ensure no other files with '.sig' extension exist on the USB flash drive.



2. Connect the Hand-held to the Load Bank, insert the USB drive into the Hand-held and power up the load bank.



3. After the load bank start up procedure has been completed the following screens will appear on the hand-held. Press Update.



# ASCO Power Technologies®

©2018 ASCO Power Technologies. All Rights Reserved.  
Publication No. 5054 v1.1

Froment is a brand of ASCO Power Technologies.  
Cliffe Road, Easton-on-the-Hill, Stamford, PE9 3NP, UK.  
[loadbanks.ascopower.com](mailto:loadbanks.ascopower.com) | [froment.sales@ascopower.com](mailto:froment.sales@ascopower.com) | +44 (0) 1780 480033



### WARNING!

READ THE LOAD BANK MANUAL BEFORE USE AND TAKE SPECIAL NOTE OF ALL SAFETY WARNINGS.

KEEP PEOPLE WELL AWAY. CLOSE ALL DOORS. ENSURE CABLES AND EARTHING ARE ADEQUATE. ENSURE A 4M GAP IS BETWEEN LOAD BANKS TO PREVENT HOT AIR RECIRCULATION. RISKS INCLUDE FIRE AND BURNS FROM THE HOT AIR OUTLET AND ELECTRIC SHOCK.