



<b>Section</b>	<b>Page</b>
<b>1 Presentation of S-VIEW software</b>	<b>3</b>
1.1 Software presentation	4
1.2 Accessing the documentation	5
1.2-1 Displaying under X-TEL or MINI X-TEL	5
1.2-2 Displaying under APPLIDIAG	5
1.3 Importing files	7
1.3-1 CAD software on a PC/PS microcomputer	7
1.3-2 CAD software on a computer or workstation	7
1.4 Structure of directories under X-TEL	9
<b>2 S-VIEW operating modes</b>	<b>11</b>
2.1 Description of the hardware	13
2.2 Installing the software	14
2.2-1 Inserting the software key	14
2.2-2 Preliminary operations	14
2.2-3 Installation conditions	14
2.2-4 Installation procedure	15
2.3 Accessing the S-VIEW tool	17
2.4 "Search" menu	19
2.4-1 "Object..."	20
2.4-2 "Page Overview" (Alt+F5)	21
2.4-3 "Plant Overview" (F5)	21
2.4-4 "Cabinet Design" (F6)	21
2.4-5 "Terminal Diagram" (F7)	21
2.4-6 "Interconnection Diagram" (F8)	21
2.4-7 "Parts List" (F9)	21
2.4-8 "General Information" (Alt+F9)	21



<b>Section</b>	<b>Page</b>
2.5 "Page" menu	22
2.5-1 "Page forward" (PgDn)	23
2.5-2 "Page backward" (PgUp)	23
2.5-3 "<n> pages forward" (Ctrl+PgDn) and "<n> pages backward" (Ctrl+PgUp)	23
2.5-4 "First page" (Home) or "Last page" (End)	23
2.5-5 "Go to page..." (F2)	24
2.5-6 "Diagnostic forward" (Ctrl+↓) or "Diagnostic backward" (Ctrl+↑)	25
<hr/>	
2.6 "Zoom" menu	26
2.6-1 "Screen" (Alt+7/9/1/3)	27
2.6-2 "Full page" (Alt+5)	27
<hr/>	
2.7 "Configuration" menu	28
2.7-1 "Jump : Number of pages..."	29
2.7-2 "Colors..."	30
2.7-3 "Font..."	31
<hr/>	
2.8 "About" menu	32
2.8-1 "Information about the S-VIEW program..."	33
2.8-2 "Information about the wiring documentation file..."	34
<hr/>	
2.9 "Quit" menu	35
2.9-1 "Close" (F3)	35
2.9-2 "Resume" (R)	35
<hr/>	
2.10 "Help" menu (F1)	36
<hr/>	
<b>3 Error messages</b>	<b>37</b>
3.1 Displaying error messages	38
<hr/>	
3.2 Error messages	39

<b>Section</b>	<b>Page</b>
<b>1.1 Software presentation</b>	<b>4</b>
<b>1.2 Accessing the documentation</b>	<b>5</b>
1.2-1 Displaying under X-TEL or MINI X-TEL	5
1.2-2 Displaying under APPLIDIAG	5
<b>1.3 Importing files</b>	<b>7</b>
1.3-1 CAD software on a PC/PS microcomputer	7
1.3-2 CAD software on a computer or workstation	7
<b>1.4 Structure of directories under X-TEL</b>	<b>9</b>

---

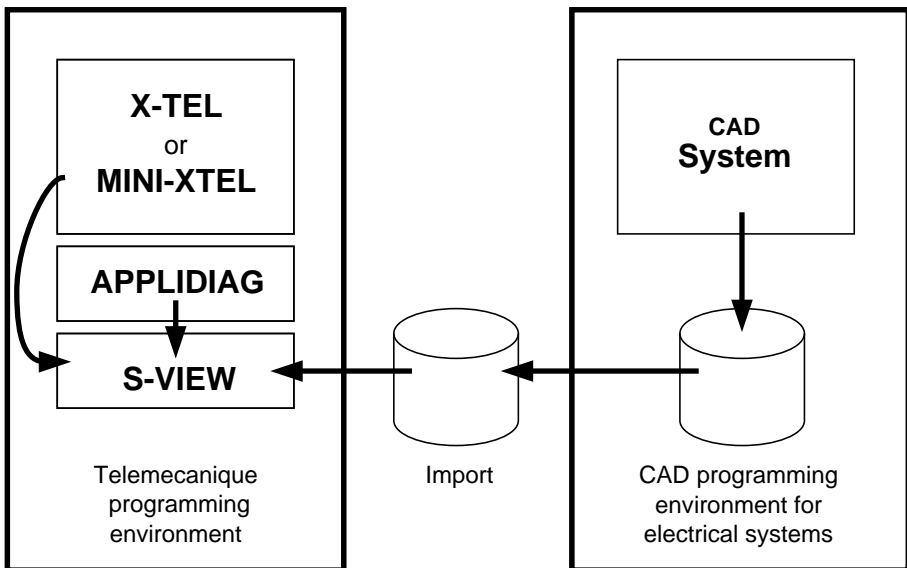
## 1.1 Software presentation

---

S-VIEW is an addition to the APPLIDIAG software, and is used to display the electrical wiring file under the MINI X-TEL or X-TEL software workshop. This file, generated by the CAD system, contains the following information :

- Wiring diagrams
- Plant overview
- Cabinet design
- Terminal diagram
- Interconnection diagram
- Parts list
- General information.

S-VIEW allows data to be searched for throughout a batch of documentation and displayed on the screen. To access specific information rapidly, S-VIEW offers various special functions.

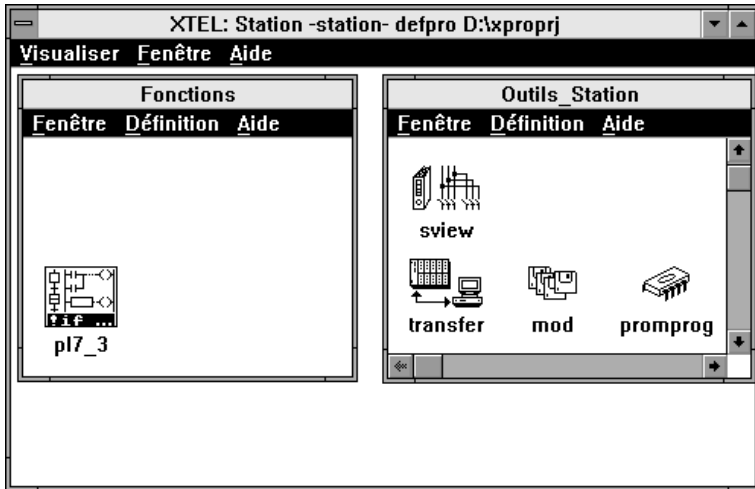


Generally speaking, the documentation displayed by S-VIEW consists of diagrams created by a CAD system, which form part of the PLC applications. The associated files which have been generated by the CAD system must be in a simplified Hewlett-Packard-Graphics-Language format, abbreviated as **HPGL**. It is a simple format, in that not all HPGL commands are supported (those not required for the screen display).

## 1.2 Accessing the documentation

### 1.2-1 Displaying under X-TEL or MINI-XTEL (Page function)

S-VIEW is integrated within X-TEL as a project or station tool. Once the software is launched under the appropriate window, the first page of data is displayed. The user can scroll through the document using the software functions.



### 1.2-2 Displaying under APPLIDIAG (Diagnostic function)

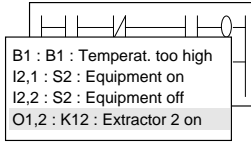
S-VIEW may also be used to perform a thorough diagnostic of the application. A direct call up of the S-VIEW tool has been incorporated in the APPLIDIAG diagnostic tool. APPLIDIAG transmits the object containing a potential error to S-VIEW as a program line, and searches for the corresponding wiring diagram page identified as the first page of this object. Using the S-VIEW functions, the user can then scroll through all the pages of the document which are defined for this object. In this way, it is easy to determine any other objects in the wiring diagram which may cause an error.

# APPLIDIAG

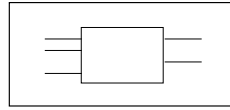
## Displaying the text

IF B1 THEN O1,2  
B1 : B1 : Temperat. too high  
O1,2 : K12 : Extractor 2 on

## Ladder



## OFB



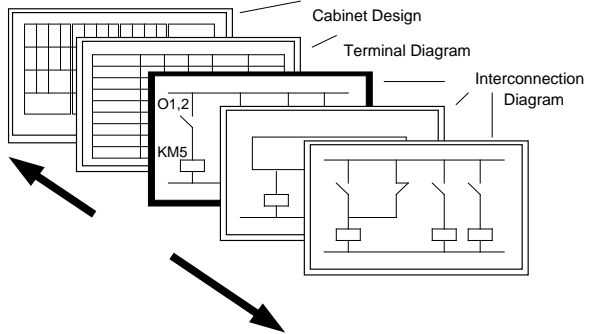
Display wiring

Display objects

Display programs

## S-VIEW

Display



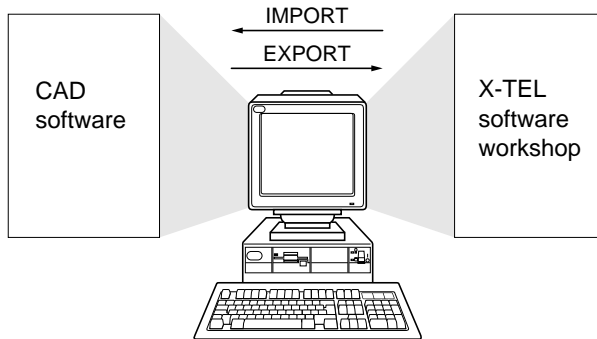
---

### 1.3 Importing files

---

#### 1.3-1 CAD software on a PC/PS microcomputer

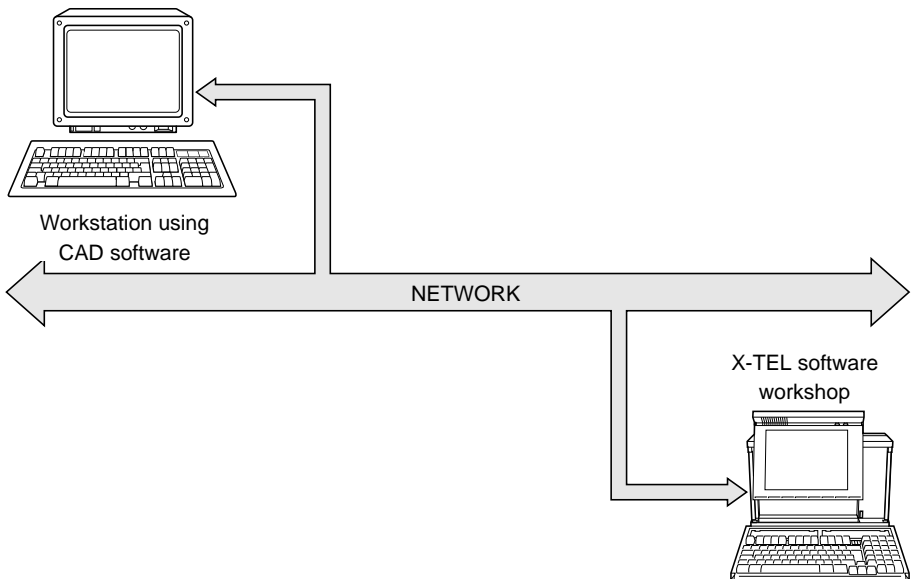
If the software is running under DOS or OS/2 and on the same type of machine as the X-TEL software workshop, the files can be moved using X-TEL functions (IMPORT/EXPORT commands under the S-VIEW icon).



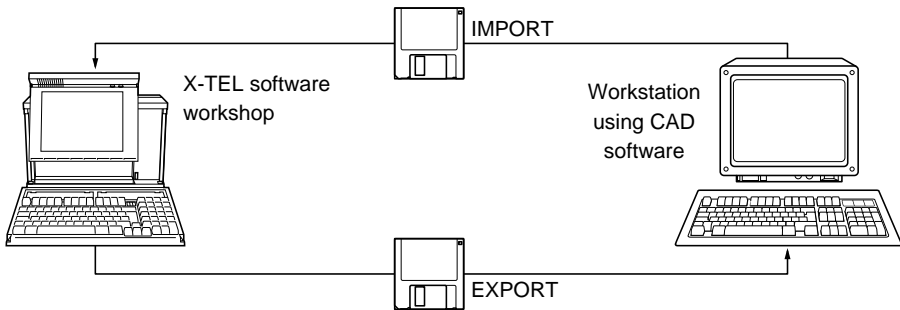
---

#### 1.3-2 CAD software on a computer or workstation

- The workstations are connected to the network, the microcomputer or FTX 507 supporting X-TEL has a slot available for the same type of PC/PS network card. Files are exchanged over the network. Consult the workstation manufacturer and the CAD software designer for more details on how to proceed with installation.



- 
- The workstations are not connected to the network and the files are therefore transferred from one device to another via diskettes compatible with each machine. The IMPORT/EXPORT commands under the S-VIEW icon are used to read from and write to diskettes at X-TEL software workshop level.





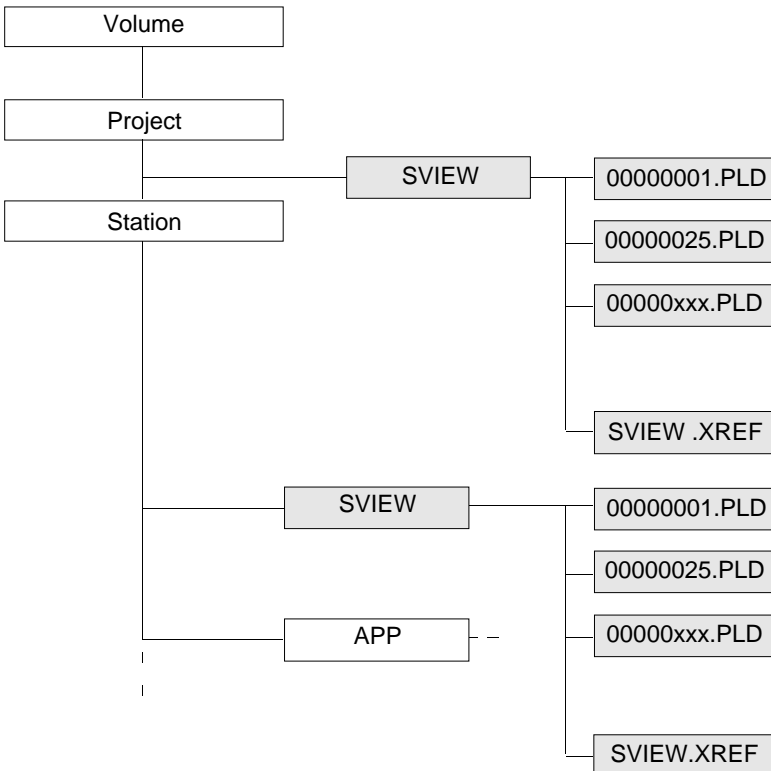
## 1.4 Structure of directories under X-TEL

All S-VIEW data which is required to display the file must be in a separate directory. When declaring S-VIEW in a project or station, the S-VIEW sub-directory is created in the project or station data directory. Before running the program for the first time, the documentation data must be imported into this sub-directory (see importing files in section 1.3).

### Files making up the wiring documentation file

A wiring documentation file consists of an S-VIEW.XRF index file and HPGL graphic files. These files are located in the S-VIEW directory for the X-TEL project or station. HPGL file names contain the page number, the remaining eight characters of the file name being made up of zeros to the left of the number. The file extension is .PLD.

All pages must be available from page 1 to the last page inclusive. Under S-VIEW, the last page corresponds to the number of PLD files in the data directory. In addition to the wiring diagram files, S-VIEW requires a cross reference table which establishes the links between the various wiring diagram files.



---

<b>Section</b>	<b>Page</b>
<b>2.1 Description of the hardware</b>	<b>13</b>
<b>2.2 Installing the software</b>	<b>14</b>
2.2-1 Inserting the software key	14
2.2-2 Preliminary operations	14
2.2-3 Installation conditions	14
2.2-4 Installation procedure	15
<b>2.3 Accessing the S-VIEW tool</b>	<b>17</b>
<b>2.4 "Search" menu</b>	<b>19</b>
2.4-1 "Object"	20
2.4-2 "Page Overview" (Alt+F5)	21
2.4-3 "Plant Overview" (F5)	21
2.4-4 "Cabinet Design" (F6)	21
2.4-5 "Terminal Diagram" (F7)	21
2.4-6 "Interconnection Diagram" (F8)	21
2.4-7 "Parts List" (F9)	21
2.4-8 "General Information" (Alt+F9)	21
<b>2.5 "Page" menu</b>	<b>22</b>
2.5-1 "Page forward" (PgDn)	23
2.5-2 "Page backward" (PgUp)	23
2.5-3 "<n> pages forward" (Ctrl+PgDn) and "<n> pages backward" (Ctrl+PgUp)	23
2.5-4 "First page" (Home) or "Last page" (End)	23
2.5-5 "Go to page..." (F2)	24
2.5-6 "Diagnostic forward" (Ctrl+↓) or "Diagnostic backward" (Ctrl+↑)	25

<b>Section</b>		<b>Page</b>
<b>2.6</b>	<b>"Zoom" menu</b>	26
	2.6-1 "Screen"	27
	2.6-2 "Full page" (Alt+5)	27
<b>2.7</b>	<b>"Configuration" menu</b>	28
	2.7-1 "Jump : Number of pages..."	29
	2.7-2 "Colors..."	30
	2.7-3 "Font..."	31
<b>2.8</b>	<b>"About" menu</b>	32
	2.8-1 "Information about the S-VIEW program..."	33
	2.8-2 "Information about the wiring documentation file..."	34
<b>2.9</b>	<b>"Quit" menu</b>	35
	2.9-1 "Close" (F3)	35
	2.9-2 "Resume" (R)	35
<b>2.10</b>	<b>"Help" menu (F1)</b>	36

## 2.1 Description of the hardware

To run the S-VIEW software, it is necessary to have a terminal with the following :

- OS/2 operating system, version 1.2, 1.3 or 2.1
- X-TEL (TXT L BASE V5) or MINI X-TEL (TXT L BJR V5) software workshop.

This requires an FTX 507 workstation or a PC compatible with at least :

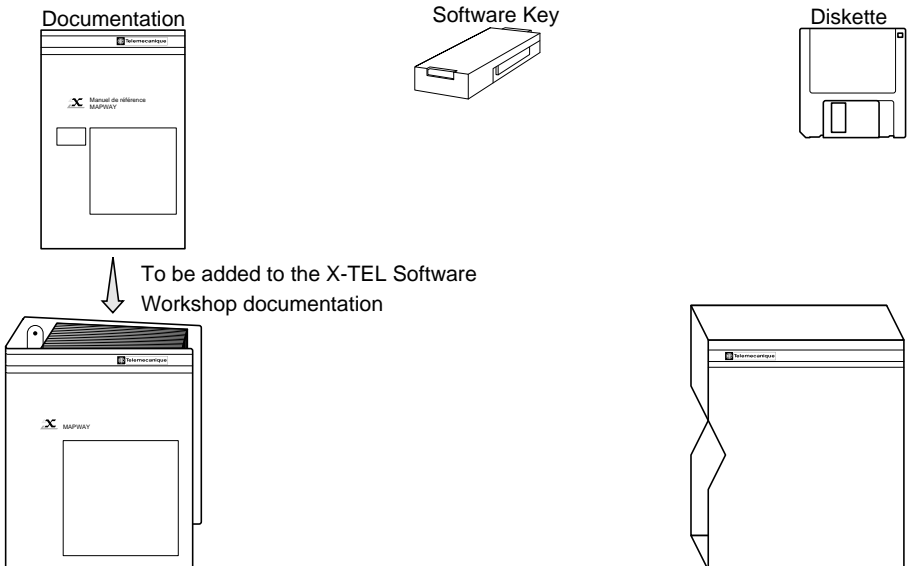
- a CPU with an 80386 microprocessor (80486 for OS/2 version 2.1)
- 6 Mb of RAM memory (12 Mb for OS/2 version 2.1)
- 80 Mb of hard disk (120 Mb for OS/2 version 2.1)
- high-definition VGA screen.

### Important

While every precaution has been taken in the development of this software, Telemecanique does not assume responsibility for correct operation of these programs on all PC compatible processors (which fulfil the required characteristics) which are currently available.

The S-VIEW software package, reference TXT L SVW V5E, comprises :

- One 3 1/2" diskette TXT LF SVW V5,
- A software key,
- This manual, reference TXT DM SVW V5E.



---

## 2.2 Installing the software

---

### 2.2-1 Inserting the software key

Position the software key in the empty slot of the key support.

This operation must be performed when the machine is not powered up.

#### Note

This software key gives the access rights essential to work with the S-VIEW software. The Key Manager Tool, integrated in the X-TEL and MINI X-TEL Software Workshops, is used to transfer this access to the working key, thereby providing a space in the key support. For further details on how to use this tool, refer to the TXT DM XTEL V5E or TXT DM BJR V5E manuals.

---

### 2.2-2 Preliminary operations

Before installing the S-VIEW software onto the hard disk, it is advisable to :

- Read the licence certificate and guarantee concerning copyright and software installation restrictions,
- Make a copy of the installation diskette to protect it from any accidental damage, and only work with the copy.

#### Important

The S-VIEW diskette is supplied write-protected.  
Do not change the position of the write-protect tab.

---

### 2.2-3 Installation conditions

S-VIEW runs under the X-TEL or MINI X-TEL environment.

The software workshop must already be installed on the workstation.

A minimum of 150 Kbytes must be available on the partition of the disk where the S-VIEW software is to be installed.

## 2.2-4 Installation procedure

### Installing the S-VIEW software

The X-TEL or MINI X-TEL software workshop version V5 must already be installed on the workstation; if this is not the case, install the X-TEL (TXT L BASE V5) or MINI X-TEL (TXT L BJR V5) software workshop, then :

- Open a full-screen OS/2 session :
  - for OS/2 1.2 or 1.3.
    - open **Group Main** window,
    - activate **OS/2 Full Screen**. The [C:\] prompt is displayed on the screen.
  - for OS/2 2.1
    - open the **OS/2** folder,
    - open **Guest**,
    - open **OS/2 Full Screen**. The [C:\] prompt is displayed on the screen.
- Insert the TXT LF SVW V5 diskette in the disk drive,
- Type a: or b: depending on the disk drive used and confirm with enter.

After the new prompt (for example [a:\] or [b:\]) type Install.

The following screen is displayed :

```

INSTALLATION LOGICIEL S-VIEW
S-VIEW SOFTWARE INSTALLATION
(C) TELEMECANIQUE 1992-1993 U5.0
  
```

Press <Enter> to continue :

After pressing <Enter>, the S-VIEW software files are stored in the various sub-directories of the software workshop. The following screen is then displayed :

### CONFIGURATION CHECK

The installation procedure can perform a check on the program configuration of the XTEL Software Workshop installed under OS/2.

If you have just completed the last program installation required before starting the XTEL Software Workshop, you can run a complete check on the program configuration. If not, run the complete check once you have installed all XTEL software.

- 1 Last installation completed, run configuration check.
- 2 Run check later, other programs still waiting to be installed in the XTEL software workshop.

Your choice :

---

After each software installation, it is advisable to check the configuration.  
Selecting 1 activates a check on the X-TEL software workshop programs.  
Once this check has been performed, the S-VIEW software installation is complete.

**INSTALLATION COMPLETE**

**The installation phase is complete.**

**The S-VIEW tool is now installed in the Telemecanique XTEL Software Workshop.**

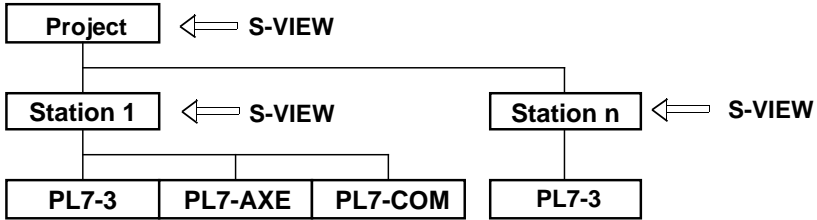
Press <Enter> :

**Enter** Returns to OS/2 full screen window.



### 2.3 Accessing the S-VIEW tool

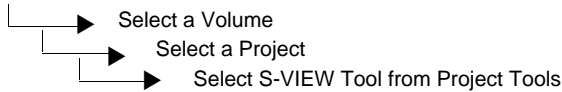
Under X-TEL, S-VIEW can be accessed at both project and station level.



S-VIEW software is launched in the X-TEL software workshop at project or station level.

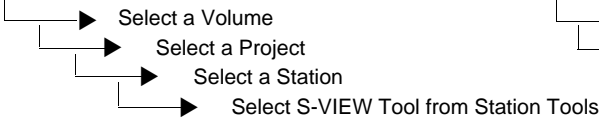
- At project level

X-TEL

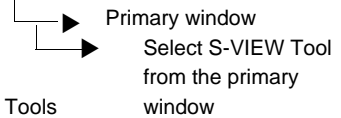


- At station level

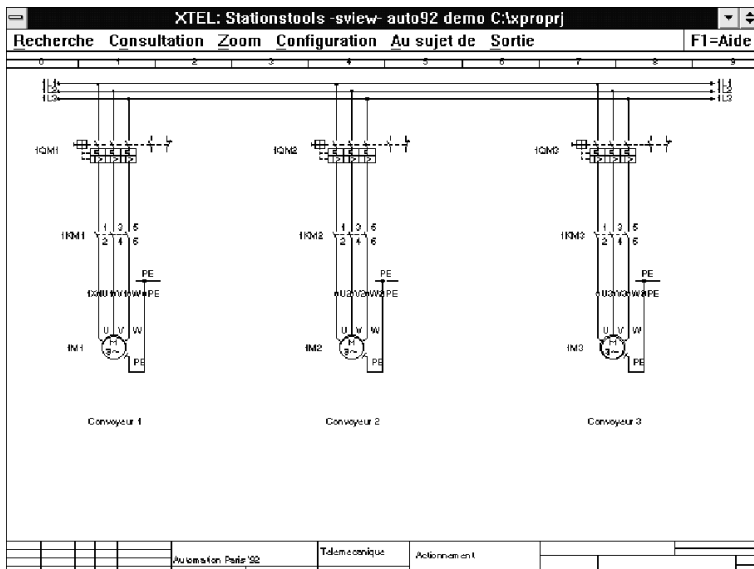
X-TEL



MINI X-TEL



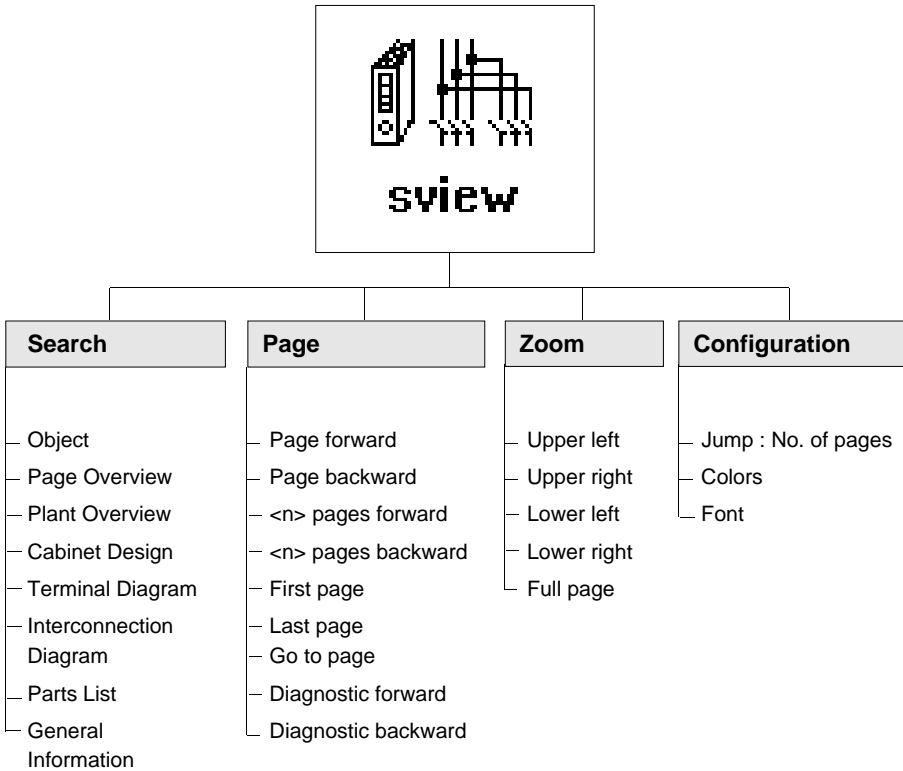
#### Initial screen



---

The primary window for the S-VIEW tool provides access to the various commands : Search, Page, Zoom, Configuration, About, Quit.

## Diagram

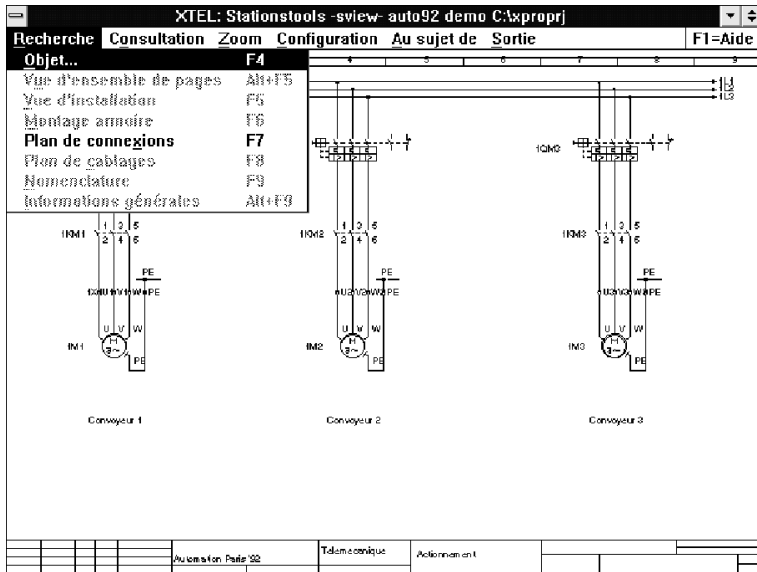


S-VIEW also provides the usual menus : About, Quit and Help.

## 2.4 "Search" menu

This menu contains the search commands :

- Object
- Page Overview
- Plant Overview
- Cabinet Design
- Terminal Diagram
- Interconnection Diagram
- Parts List
- General Information

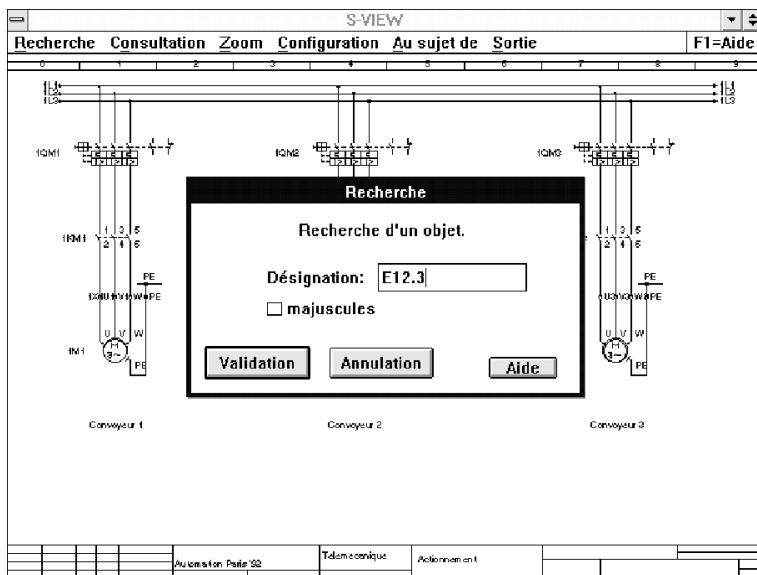


These commands are only available if data files have been imported into the current project or station.

## 2.4-1 "Object..."

This function searches for objects in the wiring documentation file.

The function can also be selected by pressing the **F4** function key.



The object reference designation must be entered in the entry field in the dialog box. If a search has already been initiated, the designation last searched for will appear in this field by default. To simplify entry, if the check box **uppercase letters** has been ticked all lowercase letters are converted into uppercase letters.

- **Cancel**, the function is cancelled without any changes being made.
- **Search**, the search is started. If one or more pages of the wiring file refer to the object entered, the first page containing the object is then displayed. A message is displayed if the object is not found.

An object can only be found if the designation corresponds exactly with the syntax of PL7 objects.

- **Help**, a help screen is displayed.

#### **2.4-2 "Page Overview" (Alt+F5)**

This command accesses the cover page of the documentation file. If this page does not exist, then the function cannot be selected.

---

#### **2.4-3 "Plant Overview" (F5)**

This command accesses the first page of the plant overview. If this page does not exist, then the function cannot be selected.

---

#### **2.4-4 "Cabinet Design" (F6)**

This command accesses the first page of the cabinet design. If this page does not exist, then the function cannot be selected.

---

#### **2.4-5 "Terminal Diagram" (F7)**

This command accesses the first page of the terminal diagram. If this page does not exist, then the function cannot be selected.

---

#### **2.4-6 "Interconnection Diagram" (F8)**

This command accesses the first page of the interconnection diagram. If this page does not exist, then the function cannot be selected.

---

#### **2.4-7 "Parts List" (F9)**

This command accesses the first page of the parts list. If this page does not exist, then the function cannot be selected.

---

#### **2.4-8 "General Information" (Alt+F9)**

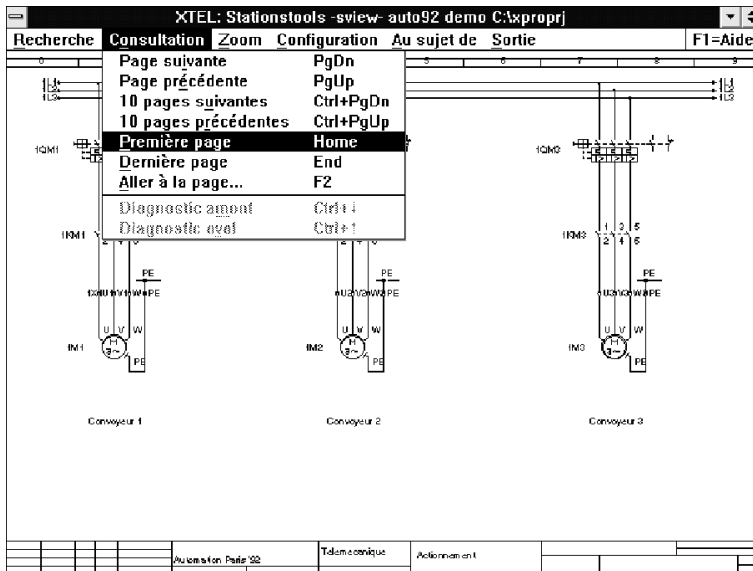
This command accesses the first page of the general information. If this page does not exist, then the function cannot be selected.

---

## 2.5 "Page" menu

This menu contains the commands for displaying pages :

- Page forward
- Page backward
- <n> pages forward
- <n> pages backward
- First page
- Last page
- Go to page
- Diagnostic forward
- Diagnostic backward



All these commands are only available if data files have been imported into the data directory.

### **2.5-1 "Page forward" (PgDn)**

This function is used to display the next page of the documentation. A message is displayed when the last page is reached.

---

### **2.5-2 "Page backward" (PgUp)**

This function is used to display the previous page of the documentation. A message is displayed when the first page is reached.

---

### **2.5-3 "<n> pages forward" (Ctrl+PgDn) and "<n> pages backward" (Ctrl+PgUp)**

This function displays the page located n pages forwards or backwards from the page currently displayed. A message is displayed when the last or first page is reached.

The page offset has a default value of 10 pages when the program is called up. It can be changed in the Configuration menu. The new value will also be reflected in the menu text.

---

### **2.5-4 "First page" (Home) or "Last page" (End)**

This function is used to call up the first or last page of the documentation file.

---





The required page number is entered in the entry field in the dialog box. The page number must be between 1 and the number of the last page in the documentation file. If the number entered is outside this range or if the entry contains non-numeric characters an error message is displayed and the program returns to the entry field.

- **Cancel** : the function is cancelled without any changes being made.
- **OK** : the program displays the selected page if the correct entry is made.
- **Help** : a help menu is displayed.

---

#### **2.5-6 "Diagnostic forward" (Ctrl+↓) or "Diagnostic backward" (Ctrl+↑)**

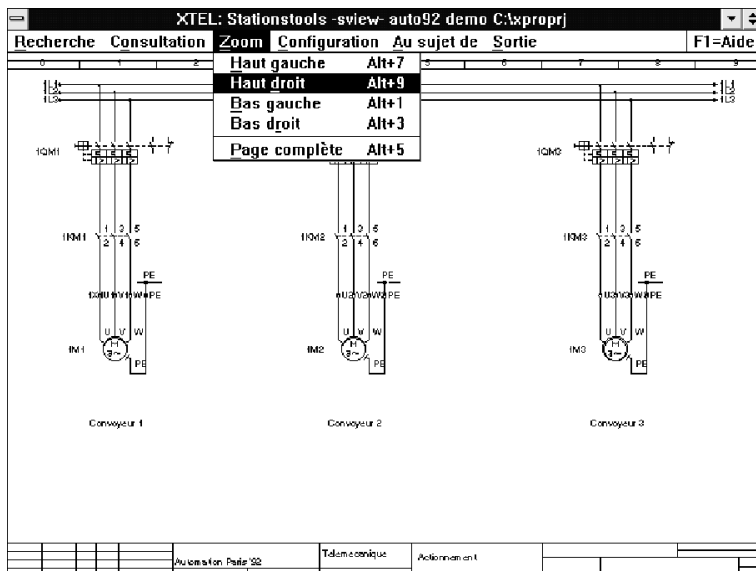
This function displays the previous page with the same potential. A message is displayed if the first or last page has already been reached.

This function can only be selected if an object search has been performed and completed successfully.

## 2.6 "Zoom" menu

This menu contains commands for zooming on the current diagram.

- Upper left
- Upper right
- Lower left
- Lower right
- Full page



### **2.6-1 "Screen"**

- "Upper left" (Alt+7)
- "Upper right" (Alt+9)
- "Lower left" (Alt+1)
- "Lower right" (Alt+3)

Each function enlarges the selected square of the current page.

The functions can also be selected by using the mouse. Move the mouse pointer to the square required and double-click on the left-hand mouse button.

---

### **2.6-2 "Full page" (Alt+5)**

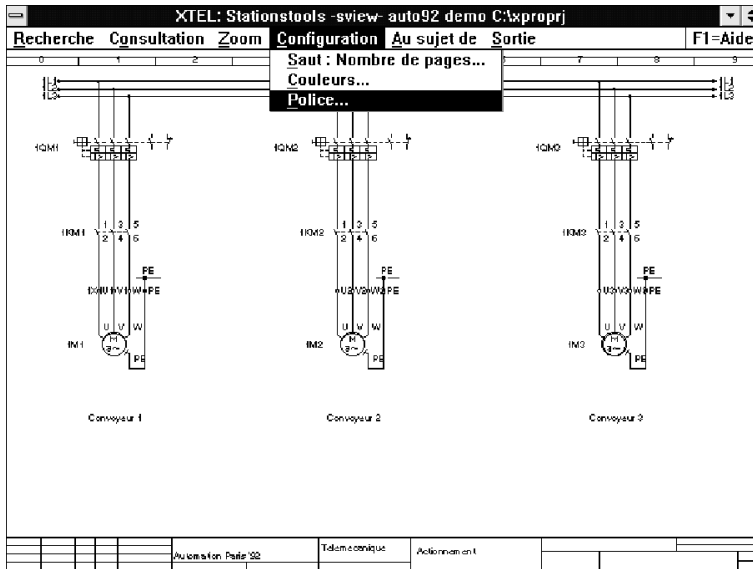
This function displays the entire page on the screen and reverses the zoom effect.

This function can also be selected by clicking on the right-hand mouse button in the application window.

## 2.7 "Configuration" menu

This menu contains the commands for setting parameters affecting program operation :

- Number of pages
- Colors
- Font

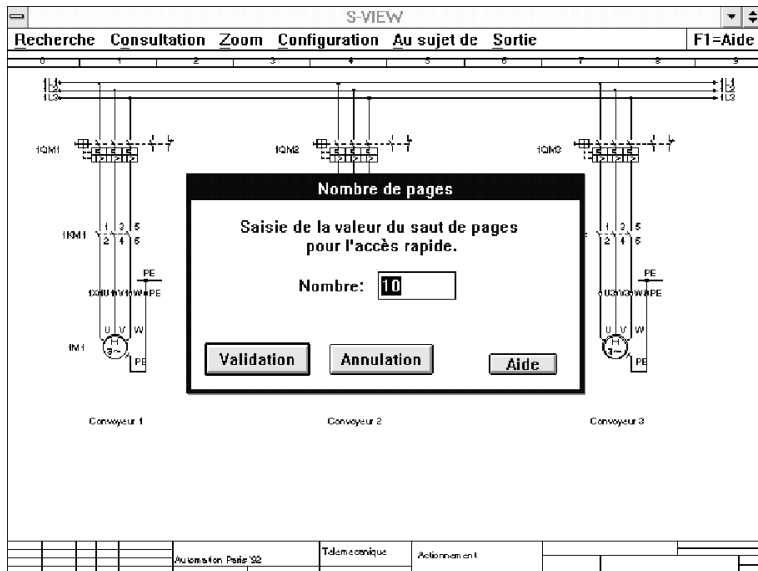


### 2.7-1 "Jump : Number of pages..."

This function allows the user to set the value of <n> used for jumping in the "<n> pages forward" and "<n> pages backward" functions accessed from the "Page" menu.

Enter the number of pages in the entry field of the dialog box. The current value is displayed by default. The value must be between 2 and 9999. An error message is displayed and the program returns to the entry field if the value entered is outside the valid range or if non-numeric characters are included.

- **Cancel** : the function is cancelled without any changes being made.
- **OK** : validates the entry. The new number is accepted and displayed in the page menu.
- **Help** : a help screen is displayed.



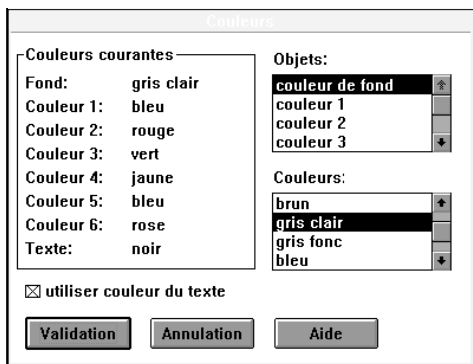
This function can only be selected if data files have been imported into the data directory. Otherwise, the function cannot be selected.

---

## 2.7-2 "Colors..."

This command allows the display colors to be selected.

The default display colors are defined when first installing S-VIEW on a computer. These are used until new colors are chosen by the user.



To change the color, select the object from the **Objects** list. Then select the new color to be assigned to it from the **Colors** list. The selection is automatically displayed in the **Currently used** list.

The color of a text is usually determined by the HPGL graphic format. To make the text easier to read, the user can assign a specific color to a text by marking the **Text color in use** field. This function is used to distinguish the text, if the diagram displays the text and the diagram in the same color.

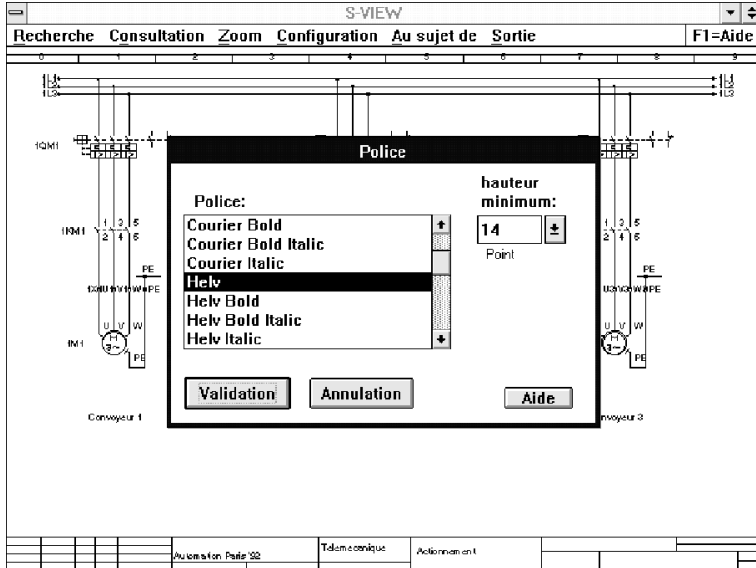
- **Cancel** : the function is cancelled without any changes being made.
- **OK** : the new colors are taken into account.
- **Help** : a special help screen is displayed.

The new color settings are stored and used the next time S-VIEW is run.

### 2.7-3 "Font..."

This command allows the text display font to be selected.

When first installing S-VIEW on a computer, Helvetica 12 point is the default font. This is used until modified.



The **Font** list contains all the fonts installed under OS/2. The standard OS/2 fonts are supported as well as the Type1 Adobe Type Manager fonts. The current default font is selected in the list. Another font can be selected by clicking onto its name.

The **Minimum size** entry field displays by default the current minimum size of the selected font. By clicking on ↓, a list of standard type sizes is displayed. By clicking on a value from the list, it is transferred to the entry field. The value can also be directly changed in the field.

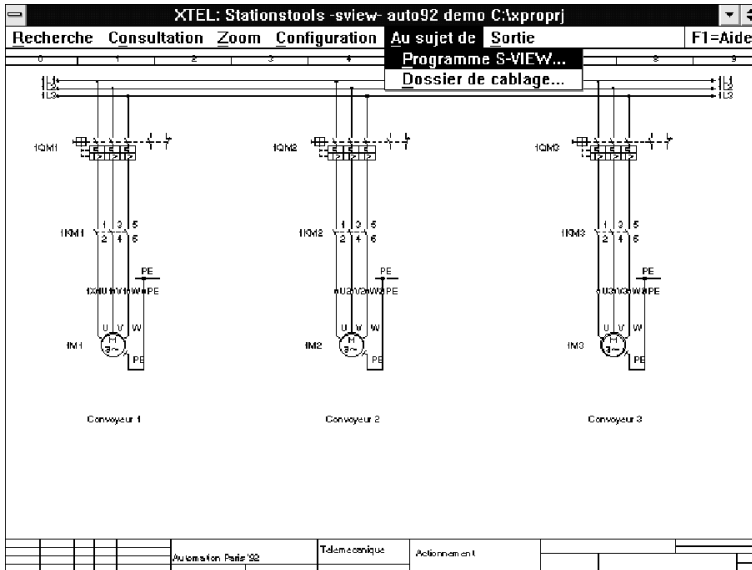
- **Cancel** : the function is cancelled without any changes being made.
- **OK** : the selected font and minimum type size are activated.

The new font and minimum type size for display are stored and used the next time S-VIEW is run.

## 2.8 "About" menu

This menu contains all the functions for accessing general program information :

- S-VIEW program
- Wiring documentation file

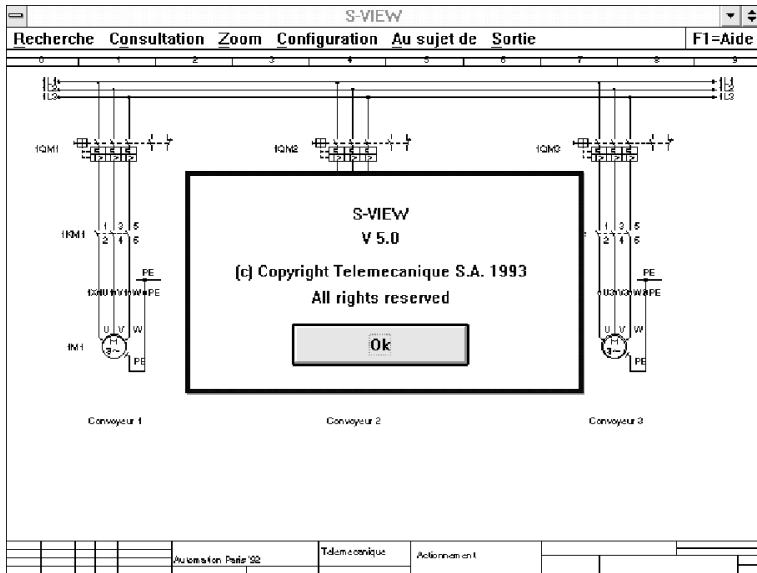




### 2.8-1 "Information about the S-VIEW program..."

This function displays the following information concerning the program :

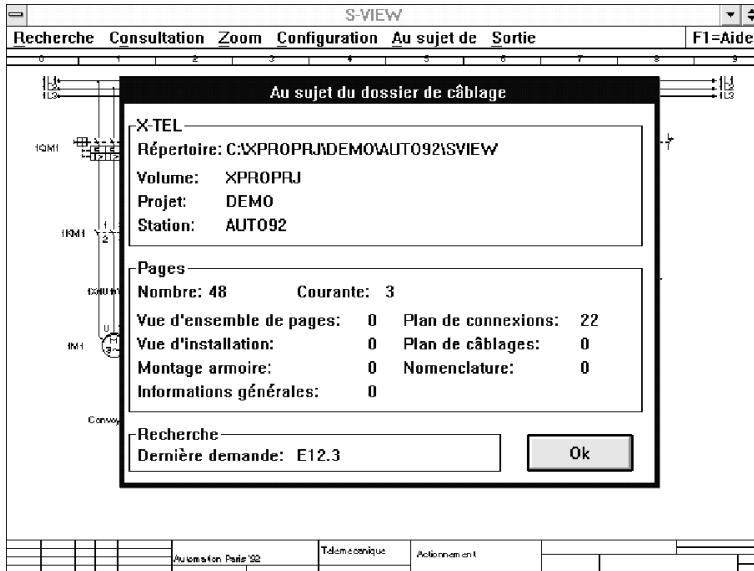
- Program name
- Version number
- Copyright message



- The display disappears once the **Ok** button is selected.

## 2.8-2 "Information about the wiring documentation file..."

This function displays information on the current data.

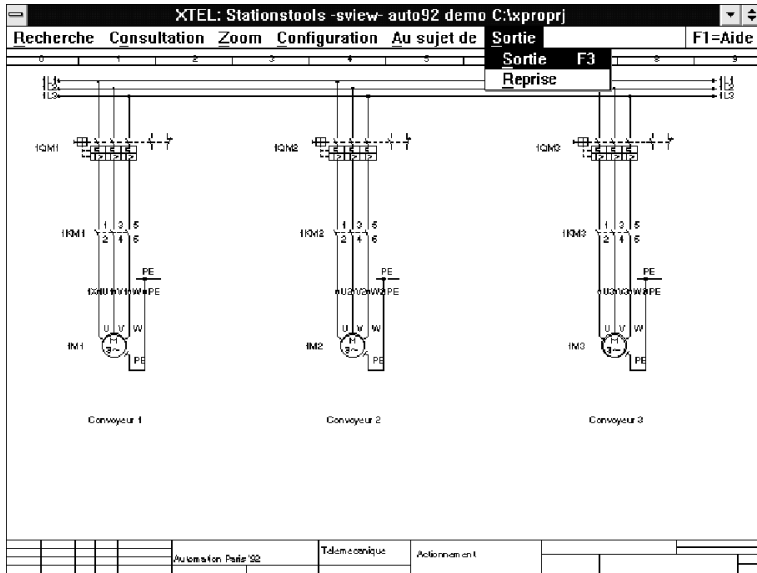


The dialog box displays the following information :

- X-TEL
  - Data access path (Directory)
  - Volume
  - Project
  - Station
- Pages
  - Number of data pages
  - Current page
  - First page of the page overview
  - First page of the plant overview
  - First page of the cabinet design
  - First page of the terminal list
  - First page of the interconnection diagram
  - First page of the parts list
  - First page of the general information
- Search
  - Last search object selected
- The display disappears once the **Ok** button is selected.

## 2.9 "Quit" menu

This menu contains the commands for exiting the program.



### 2.9-1 "Close" (F3)

This closes the program.

### 2.9-2 "Resume" (R)

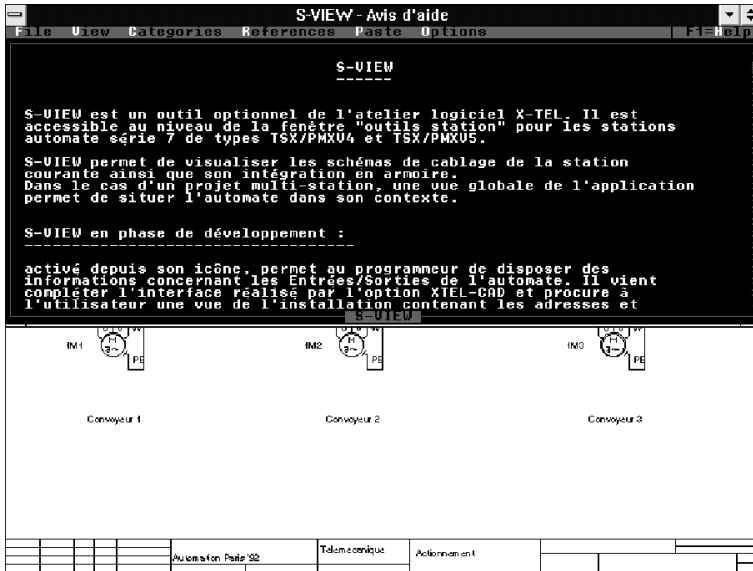
By selecting this function, the user can continue running the program if the exit menu has been selected by mistake.

---

## 2.10 "Help" menu (F1)

---

This function displays the help screen.



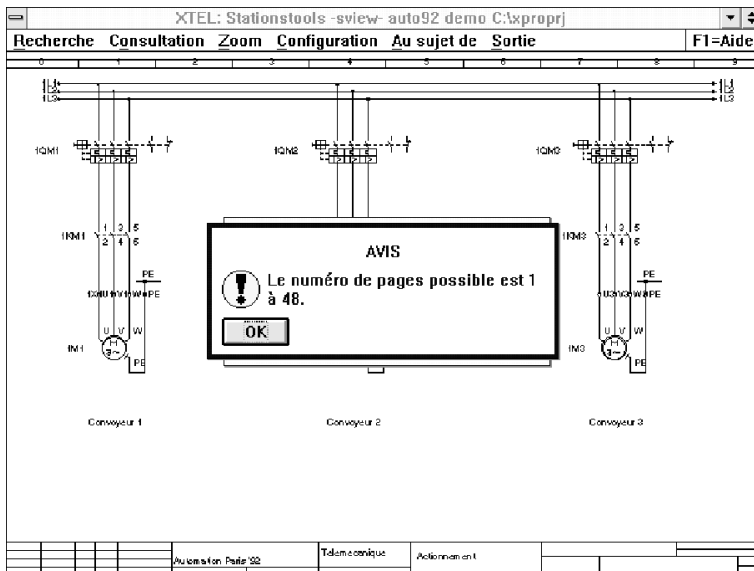
A help screen is provided for each S-VIEW function. To directly access this screen, move the cursor to the required function and press **F1**. This function can also be selected using the mouse. Select the required function with the mouse pointer and press **F1** while holding down the left-hand mouse button.

<b>Section</b>	<b>Page</b>
<b>3.1 Displaying error messages</b>	<b>38</b>
<b>3.2 Error messages</b>	<b>39</b>

### 3.1 Displaying error messages

Various system status messages are displayed on the screen while the program is running.

All messages are displayed in a separate dialog window. This window has a title specifying the type of message, an icon, the text and one or more option keys. The program is interrupted until one of the keys is selected.



Messages are displayed when the S-VIEW tool is used incorrectly or the user makes an incorrect entry.

---

### 3.2 Error messages

---

**Message** : **"There is no wiring file available."**  
**Category** : Error message.  
**Error** : The program detects that there is no wiring file in the data directory. The files which make up the wiring file must be transferred to the data directory, using the X-TEL software workshop import functions.  
**Action** : Close the message window by clicking on **OK** and import the files using the **IMPORT** option under the **S-VIEW** icon.

---

**Message** : **"The object ??? (object name) was not found in the wiring file."**  
**Category** : Warning.  
**Error:** ?object name? will be replaced by an object designation. The program searches for the specified object designation but cannot find it. The object does not therefore exist. An entry error may also have occurred. Object designations must be entered in the exact PL7-3 language syntax.  
**Action:** Close the message window by clicking on **OK**.

---

**Message** : **"The last page of wiring diagnostics has already been selected."**  
**Category** : Warning.  
**Error** : There is no other page with this object on it.  
**Action** : Close the message window by clicking on **OK**.

---

**Message** : **"The first page of wiring diagnostics has already been selected."**  
**Category** : Warning.  
**Error** : The first page containing the required object is displayed on the screen. There is no page preceding this one.  
**Action** : Close the message window by clicking on **OK**.

---

---

**Message** : "The last page has already been selected."  
**Category** : Warning.  
**Error** : The last page has been reached. There are no more pages.  
**Action** : Close the message window by clicking on **OK**.

---

**Message** : "The first page has already been selected."  
**Category** : Warning.  
**Error** : The first page has been reached. There is no page preceding this one.  
**Action** : Close the message window by clicking on **OK**.

---

**Message** : "The valid page offset range is 2 to 9999."  
**Category** : Error message.  
**Error** : The number of pages to jump is invalid. This value must be between 2 and 9999. The value entered is either outside the valid range or it includes non-numeric characters. All characters are non-numeric except 0, 1, 2, 3, 4, 5, 6, 7, 8 and 9.  
**Action** : Close the message window by clicking on **OK**.

---

**Message** : "The valid page number range is 1 to ?last page?."  
**Category** : Error message.  
**Error** : ?last page? is replaced by the last page number.  
The page number entered is invalid. Only values between 1 and the last page number are accepted. The value entered is either outside the valid range or it includes non-numeric characters. All characters are non-numeric except for 0 to 9.  
**Action** : Close the message window by clicking on **OK**.



- 
- Message** : "The wiring file for page %u" does not exist."  
**Category** : Error message.  
**Error** : ?page number? is replaced by the missing page number.  
The documentation information is not complete. All page files must be available from the first to the last page. To complete the files, the missing file must be transferred by the X-TEL import functions.  
**Action** : Close the message window by clicking on **OK**.
- 
- Message** : "The environment entry XPROHELP is not defined. No help available."  
**Category** : Error message.  
**Error** : The "XPROHELP" system variable has not been correctly defined on the computer. We advise reinstalling X-TEL or MINI-XTEL.  
**Action** : Close the message window by clicking on **OK**.
- 
- Message** : "The environment entry PATH is not defined. No help is available."  
**Category** : Error message.  
**Error** : The "PATH" system variable has not been correctly defined on the computer. We advise reinstalling X-TEL or MINI-XTEL.  
**Action** : Close the message window by clicking on **OK**.
- 
- Message** : "No help support available under S-VIEW. Check the environment entry PATH."  
**Category** : Error message.  
**Error** : The PATH system variable has not been correctly defined on the computer.  
**Action** : Close the message window by clicking on **OK** and reinstall the X-TEL or MINI X-TEL Software Workshop.
-

---

**Message** : "The help message file was not found by S-VIEW. Check the environment entry XPROHELP."

**Category** : Error message.

**Error** : The system variable "XPROHELP" has not been correctly defined on the computer.

**Action** : Close the message window by clicking on **OK** and reinstall the X-TEL or MINI X-TEL Software Workshop.

---

**Message** : "The help program cannot be started."

**Category** : OS/2 system error message.

**Error** : The "QUICKHELP" program cannot be started.

**Action** : Close the message window by clicking on **OK** and reinstall the X-TEL or MINI X-TEL Software Workshop.

---