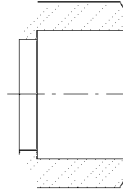


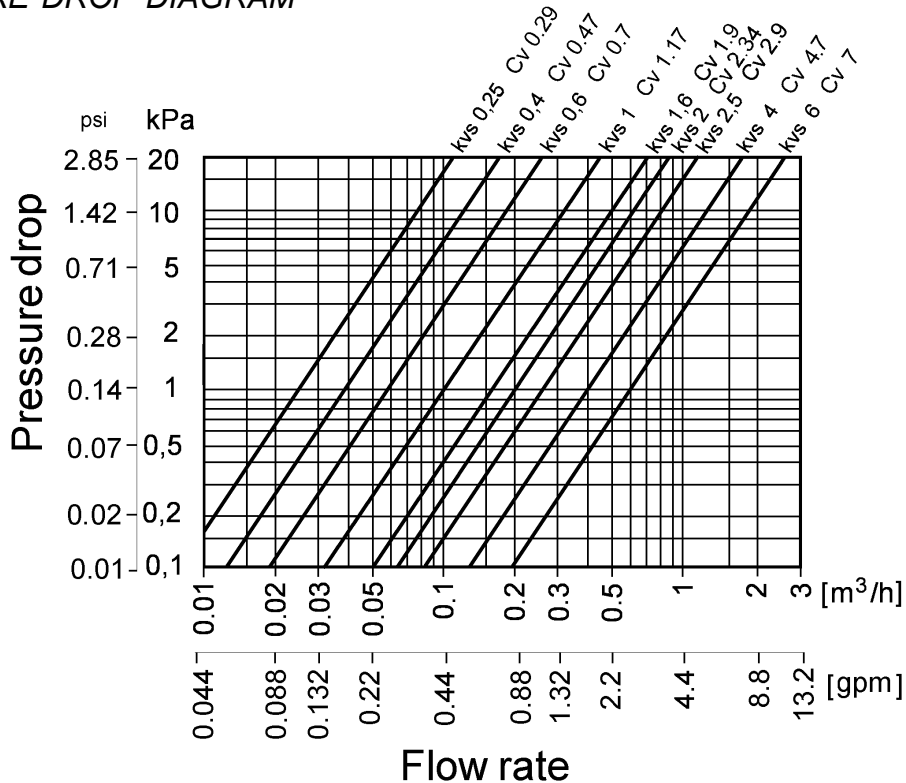
Flat tight connections



| Valve+MZ20 actuator | DN | A | B | C |
|---|------|--------------|-----------------|----------------|
| | | mm (in) | | |
| VZ29-15-0,25 VZ29-15-0,4 VZ29-15-0,6 VZ29-15-1 VZ29-15-1,6 VZ29-15-2,0 | 1/2" | 52 (2.04) | 106 (4.17) | 19.5 (0.76) |
| VZ29-20-2,5 | 3/4" | 56 (2.2) | 107 (4.2) | 20,5 (0.8) |
| VZ29-20-4,0 | | 78 (3) | | |
| VZ29-20-6,0 | | | | |
| VZ39-15-0,25 VZ39-15-0,4 VZ39-15-0,6 VZ39-15-1 VZ39-15-1,6 VZ39-15-2,0 | 1/2" | 52 (2.04) | 112 (4.4) | 25 (0.98) |
| VZ39-20-2,5 | 3/4" | 56 (2.2) | 121 (4.76) | 34 (1.33) |
| VZ39-20-4,0 | | 78 (3) | 122 (50.8) | 35.5 (1.4) |
| VZ39-20-6,0 | | | | |
| VZ49-15-0,25 VZ49-15-0,4 VZ49-15-0,6 VZ49-15-1 VZ49-15-1,6 VZ49-15-2,0 | 1/2" | 52 (2.04) | 137 (5.39) | 40 (1.57) |
| VZ49-20-2,5 | 3/4" | 56 (2.2) | 149 (5.86) | 50* (1.97) |
| VZ49-20-4,0 | | 78 (3) | 143.5 (5.65) | 44 (1.73) |
| VZ49-20-6,0 | | | | |

*50 mm (1.97) for p/n 741-0537-000
44 mm (1.73) for p/n 741-0537-010

9 PRESSURE DROP DIAGRAM



www.tac.com