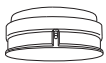
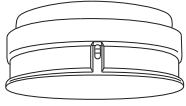


ARGUS smoke detector

Operating instructions



ARGUS smoke detector Basic
Art. no. MTN547020



ARGUS smoke detector Basic Longlife
Art. no. MTN547120

Accessories

– Sealing pin for ARGUS smoke detector (Art. no. MTN547000)

You can use sealing pins to see whether the smoke detector is manipulated.

For your safety

CAUTION

- Do not paint the smoke detector!
- The loud warning tone can damage your hearing (protect your ears when performing the functional test).
- Smoke detectors **do not** extinguish a fire!
- Smoke detectors detect smoke, but no flames or, heat!
- The smoke detector only works with a functioning, correctly connected and inserted battery. Installation without battery is not possible!
- Do not use rechargeable batteries or power packs!

DANGER

Smoke fumes are poisonous and can quickly lead to a loss of consciousness. In the event of fire, inform everyone in the household (smoke will not wake people up, children tend to hide when in a panic) and leave the building immediately. If there is a lot of smoke, crawl along the floor. Do not expose yourself to unnecessary danger. Inform the fire brigade (WHO, WHERE, WHAT)! - Your local fire brigade is happy to advise you.



Think about how you can prevent fires and what to do in case of a fire (escape plan, assembly point, location of fire extinguishers, etc.).

Getting to know the smoke detector

The ARGUS smoke detector Basic/Basic Longlife (referred to below as the **smoke detector**) is a battery-powered smoke detector for early detection of smouldering fires and open fires with development of smoke indoors.

If the smoke detector is working, the LED will flash every 40 seconds.

If there is not enough power being supplied by the battery, a tone will sound additionally every 40 seconds. The smoke detector will then continue to function for another 30 days.

CAUTION

If you are away for longer than 30 days, you will not hear the warning tone. Therefore, perform a functional test directly after you return.

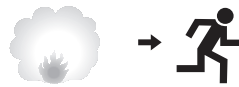
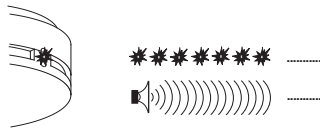
Smoke detector signals



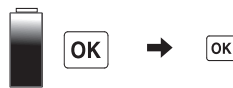
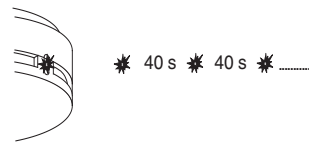
Make sure that everyone in the building is familiar with the signals of the smoke detector!

The following LED and tone signals show the dependend status of the smoke detector:

Smoke alarm



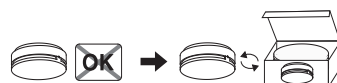
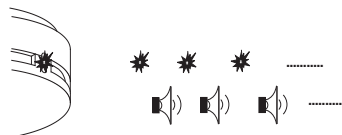
Normal operation



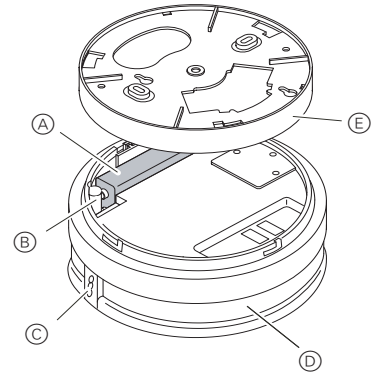
Battery empty



Defect of the smoke detector



Connections, displays and operating elements



- (A) Battery (9 V monobloc battery)
- (B) Battery connection
- (C) Test button and LED (red)
- (D) Smoke detector
- (E) Base

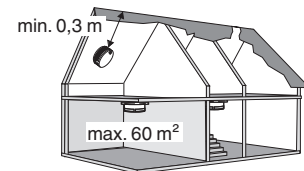
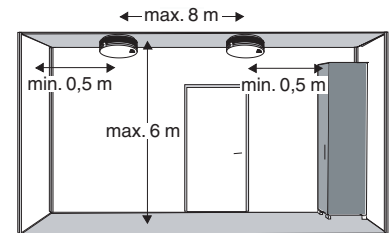
Selecting the installation site



CAUTION

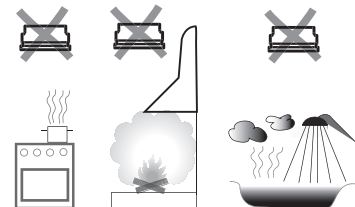
The smoke detector monitors a specific area around where it has been installed and not necessarily other rooms or other floors!

Watch out the following criterias for installing a smoke detector:



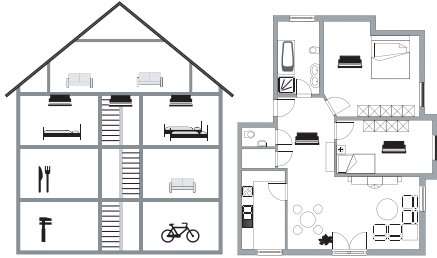
Do not install the smoke detector

- in areas where there is a draught (next to windows, doors, etc.)
- in areas where there is steam/exhaust fumes/dust, etc.
- next to lighting fixtures and ballasts (at least 1 m distance)

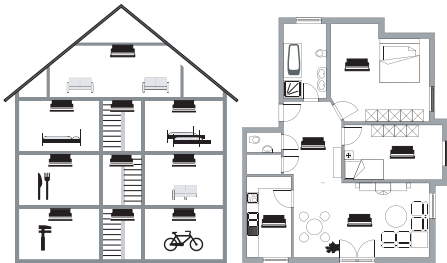


The next examples show you how many smoke detector are necessary for the minimal und optimal protection rate:

Minimal

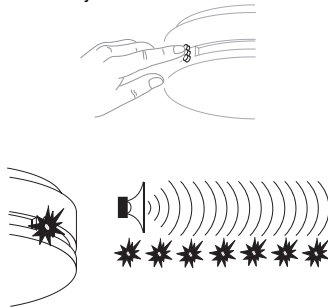


Optimal



How to operate the smoke detector

- Conduct a functional test
- after installation
 - every time you change the battery
 - after a long absence (more than 30 days)
 - at least once a year



- 1 Press the test button for at least 1 s. While the test button is actuated, a pulsating warning tone is made and the LED flashes.

Otherwise, check the battery/battery connection or replace the smoke detector.

It is recommended that you replace the smoke detector after about ten years.

Technical data

Battery	9 V, monobloc battery, IEC 6LR61 (alkaline)
MTN547020	
MTN547120	9 V, monobloc battery, IEC 9VL-J-10 (lithium)
Battery life	
MTN547020	approx. 3 years
MTN547120	approx. 10 years
Battery failure signal:	every 40 sec, 30 days
Sensitivity:	EN 14604:2005
Volume of the signal transmitter:	about 85 dB(A) at a distance of 3 m
Optical display:	LED, red
Operating temperature range:	0 °C to +60 °C
Type of protection	IP 42
Dimensions:	113x46 mm (ø x H)
VdS approval:	G206101
Complies with:	EN 14604

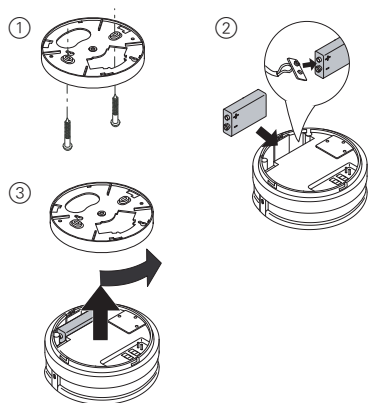
Schneider Electric Industries SAS

If you have technical questions, please contact the Customer Care Center in your country.

www.schneider-electric.com

This product must be installed, connected and used in compliance with prevailing standards and/or installation regulations. As standards, specifications and designs develop from time to time, always ask for confirmation of the information given in this publication.

How to mount the smoke detector

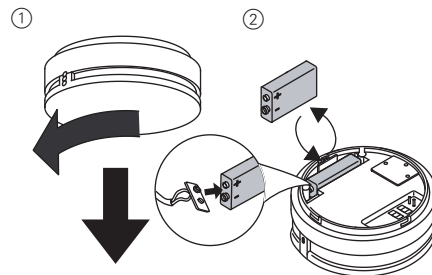


- 1 Mount the base with 2 screws.
- 2 Connect a 9 V battery and put it into the smoke detector.
- 3 Press the smoke detector from below to the base and turn it anti-clockwise.

How to change the battery

CAUTION

- There is a risk of explosion if the battery is not replaced in the correctly. Do not damage, crush or short circuit the battery. Do not use pointed or sharp tools when replacing the battery. Only use batteries of the same type when replacing used batteries.
- Dispose used batteries according to the relevant regulations and without harming the environment.



- 1 Turn the smoke detector clockwise and pull it downwards away from the base.
- 2 Change the battery.
- 3 Mount the smoke detector again.

Maintenance and care

Wipe the smoke detector clean (using a moist cloth only), carefully remove dust using a brush.

Carry out a functional test afterwards.