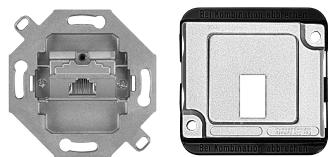


RJ45 telephone connector insert

Cat 5, Cat 6

Instruction manual



Art.-no. MTN465760

Art.-no. MTN470660

Function

For connecting analogue or digital terminal units via the 8-pole RJ45 connector.

Installation

Cable installation

- ① Unscrew the lid on the back and loosen the cable clamps.

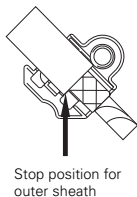
Strain relief and connection of shielding at cable Ø larger than 6 mm

- ① Shorten and prepare the cable (see „Cable preparation“).

If the cable is mounted in the wall, the minimum cable length to the wall should be 140 mm!

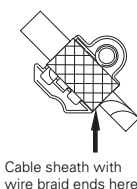
- ② Put the cable underneath the cable clamp so that the outer sheath reaches the stop position.

- ③ Fasten the cable clamp.



Strain relief and connection of shielding at cable Ø smaller than 6 mm

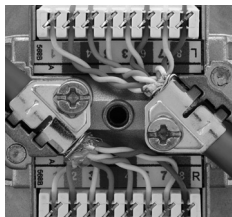
- ① When putting the prepared end of the cable (see „Cable preparation“) in the insert, push it up to the edge of the cable clamp, so that the wire braid lays underneath the cable clamp.



Connection of wires

- ① Apply the wires according to the figure and recommended color code.

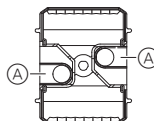
- ⓘ Do not pull the single wires too firmly. The shielding of a pair should be maintained as far as possible. The twist of a pair should also be maintained as far as possible! When connecting the wires, use the same color code for the patch panel and insert.



- ② Use the insertion tool AW2 to push the wires in the terminal (the wires will be cut at the same time).
- ③ Make sure that all unused wires are in the provided chamber to prevent damages when refastening the lid.
- ④ Put the lid back on.
- ⑤ Install the insert in a trunking system or wall box.

Cable Ø larger than 10 mm

Because the screw of the cable clamp for cables with diameter larger than 10 mm stands out accordingly, we recommend to cut out the preformed cable entries (A) of the lid.



Terminal assignment and color code

Terminal assignment



(A) Terminal block (Cat 5) for terminal socket

Version	RJ45 insert, 1-gang	RJ45 insert, 2-gang, top	RJ45 insert, 2-gang, bottom
Cat 5	1 2 4 5 3 6 7 8 L	1 2 4 5 3 6 7 8 L	1 2 3 6 4 5 7 8 R
Cat 6	1 2 3 6 4 5 7 8 L	1 2 3 6 4 5 7 8 L	1 2 3 6 4 5 7 8 R

„L / R“ = Terminal block for left/right terminal socket (viewing from front when installed)

Color code of the terminal block

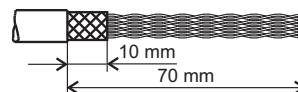
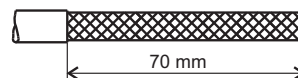
Terminal	1	2	3	4	5	6	7	8
Color*	white/green	green	white/orange	blue	white/blue	orange	white/brown	brown
Color*	white/orange	orange	white/green	blue	white/blue	green	white/brown	brown

* Color code T568A according to TIA/EIA-568-B.22 (Other color codes according to information of the cable manufacturer possible.)

Cable preparation

Cable with wire braid Cable Ø larger than 6 mm

- ① Strip approx. 70 mm of the plastic outer sheath.
- ② Push the wire braid back and cut it approx. 10 mm so that the plastic outer sheath stand out.
- ③ Shorten the wire foil and the transparent polyester foil, if provided, to the same length.



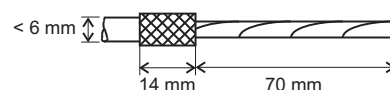
Supplementary wire

- ① Wind the supplementary wire of all cables to the plastic outer sheath, round the wire braid and place it under the cable clamp.



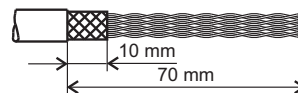
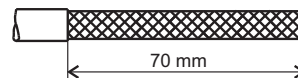
Cable Ø smaller than 6 mm

- ① Strip approx. 70 mm of the plastic outer sheath.
- ② Push the braid back over the sheath and cut it to 14 mm.



Cable with wire foil

- ① Strip approx. 70 mm of the plastic outer sheath.
- ② Cut the wire- and plastic foil, approx. 10 mm, so that the plastic outer sheath stands out.



Handle the supplementary wire as the wire braid.

Schneider Electric Industries SAS

89, boulevard Franklin Roosevelt
F - 92500 Rueil Malmaison
FRANCE

Tél: +33 0825 012 999

http://www.schneider-electric.fr