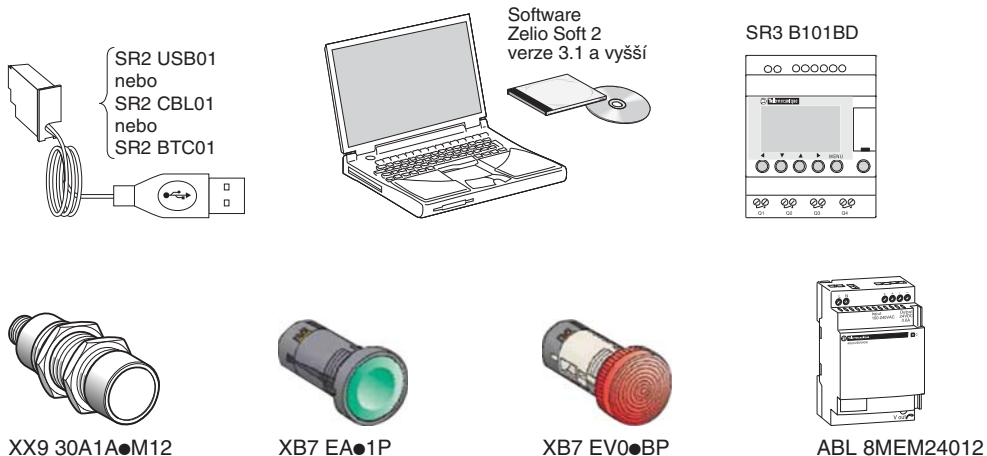


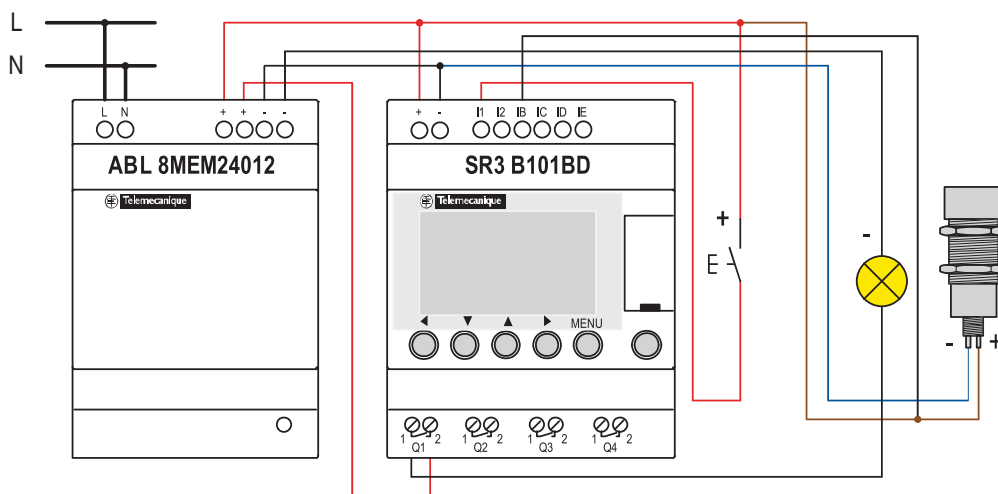
Cíl

Seznámit nové uživatele s používáním programovatelného relé Zelio Logic. Pomoci se zorientovat v programování pomocí software Zelio Soft.

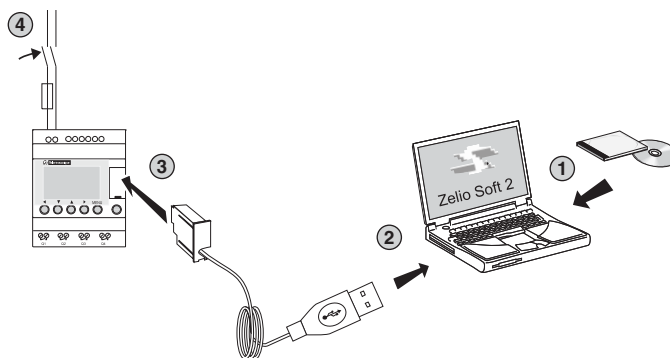
A Požadovaný hardware



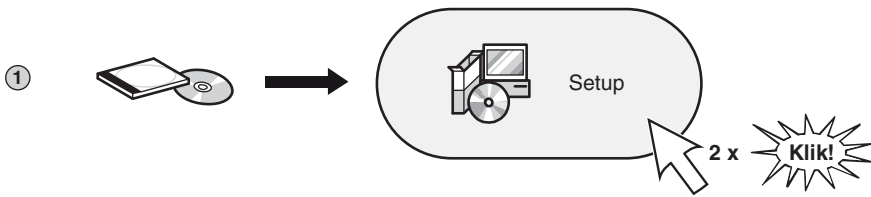
B Propojení hardwaru



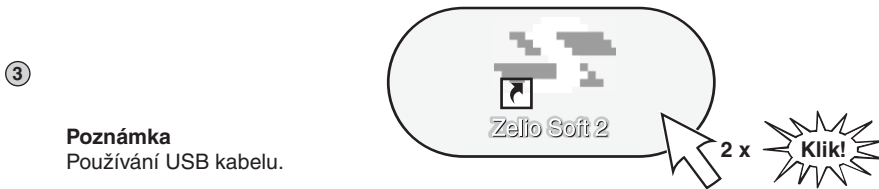
Propojení pro programování a přenos programu.



C Instalace a používání software

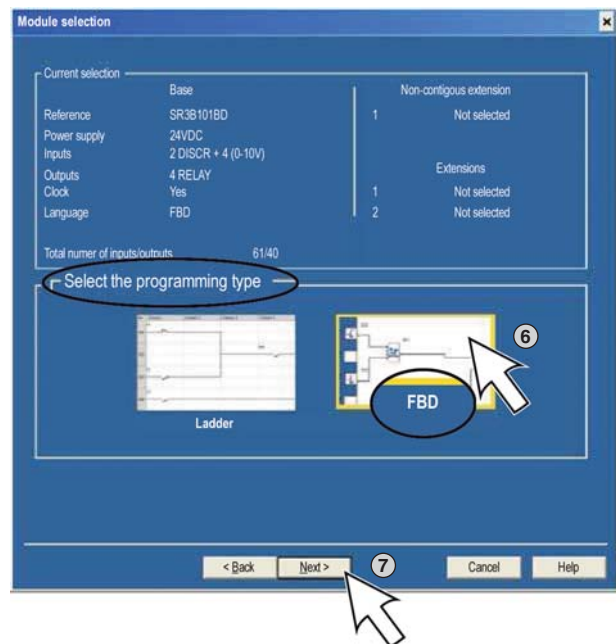
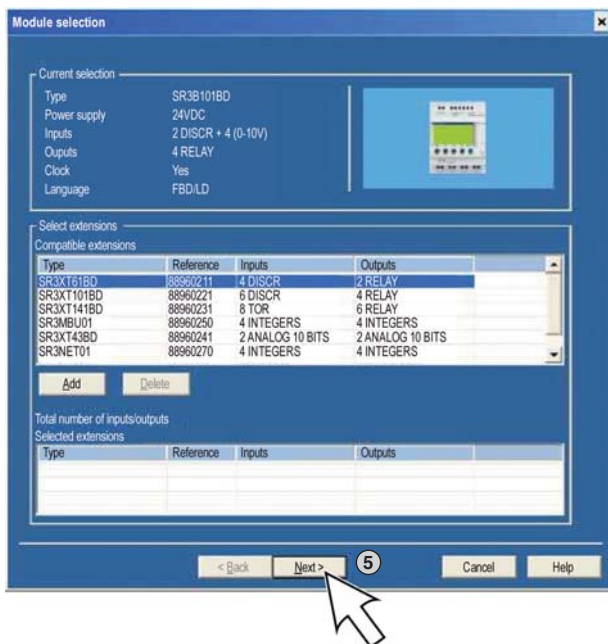
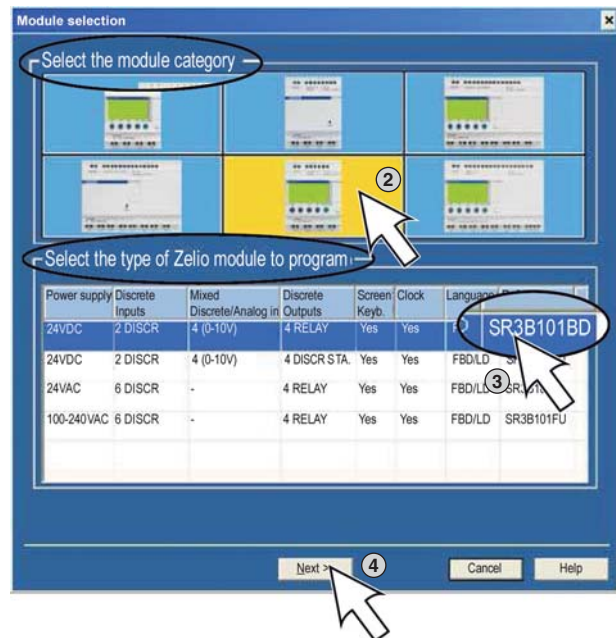
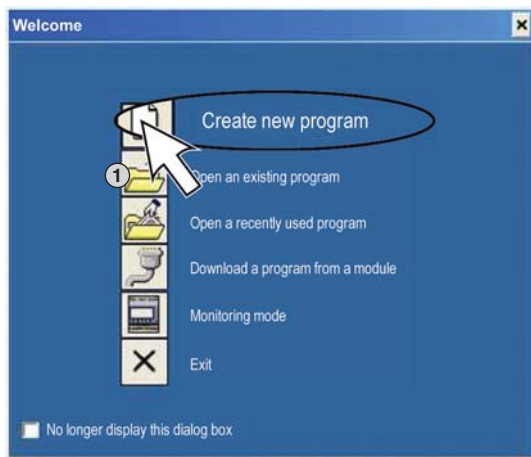


2 Postupujte podle uvedených instrukcí.



Poznámka
Používání USB kabelu.

D Programování a přenos programu



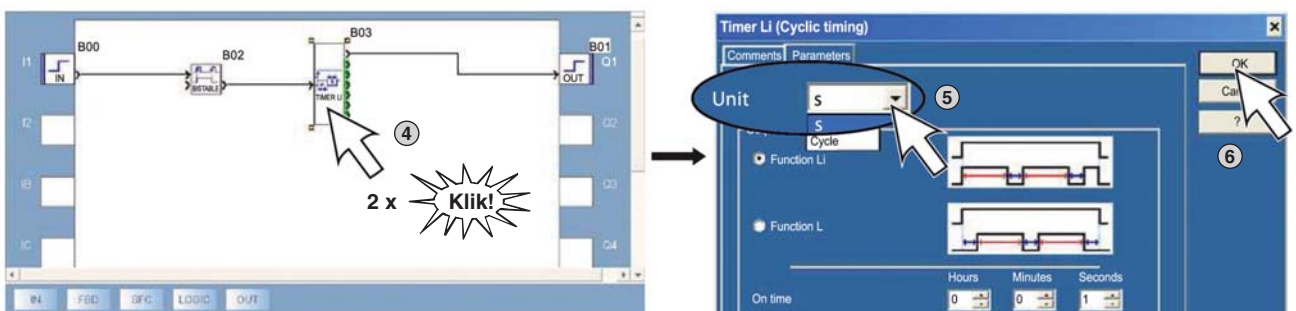
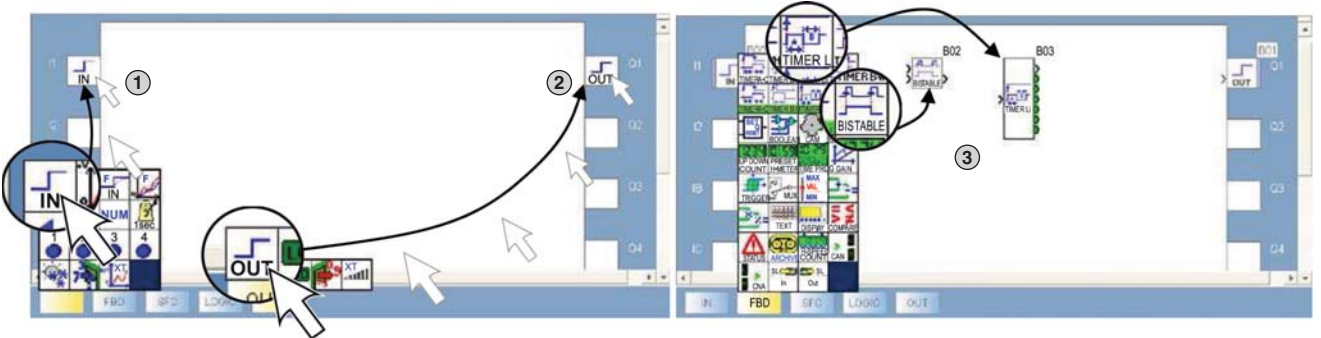
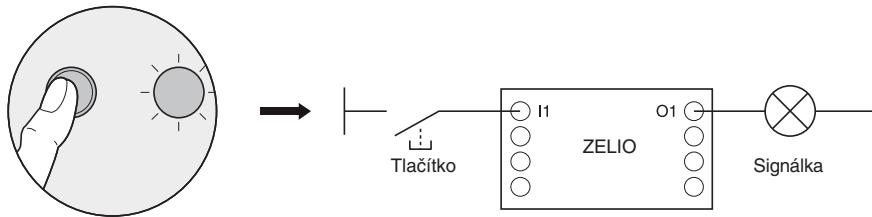
E On-line nápověda



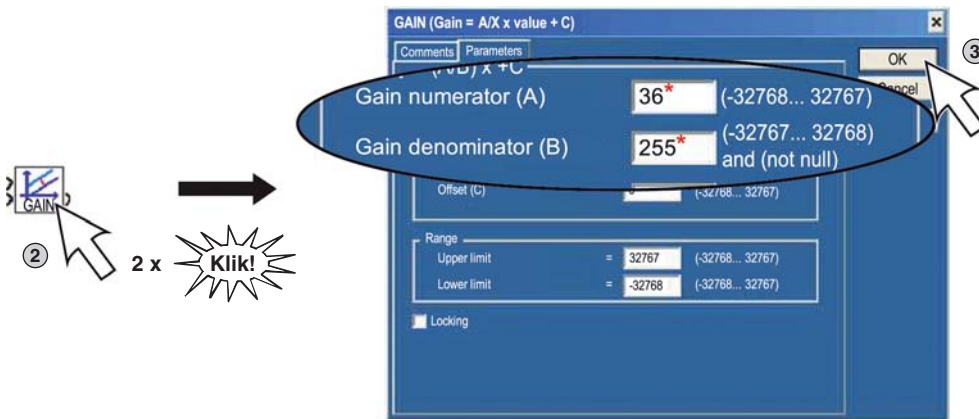
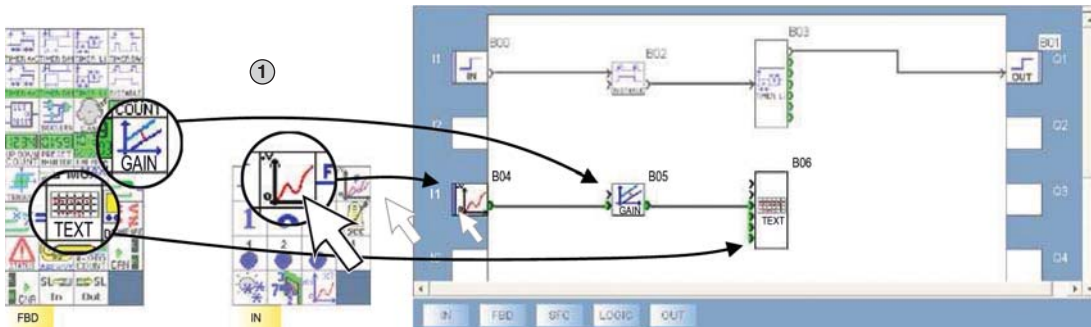
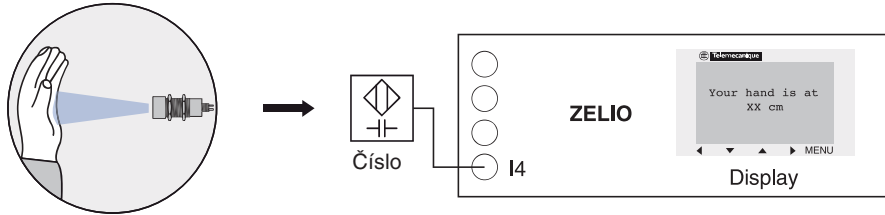
F Příklad aplikace



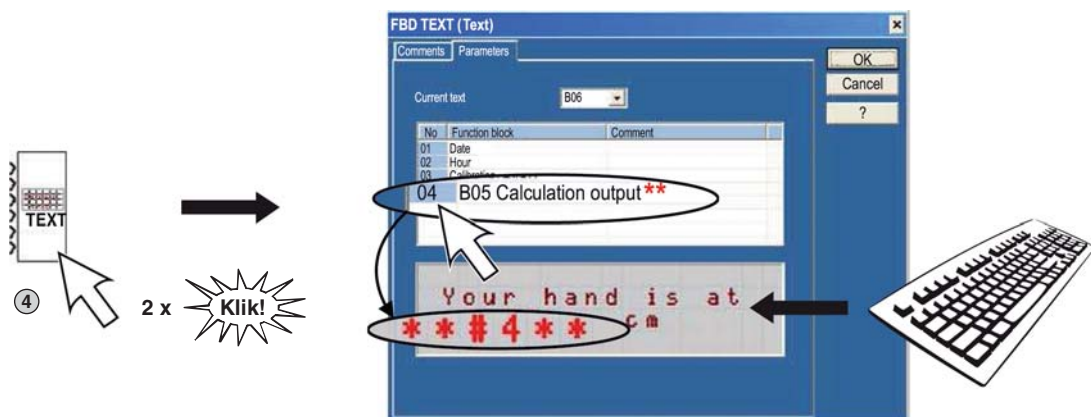
G



H

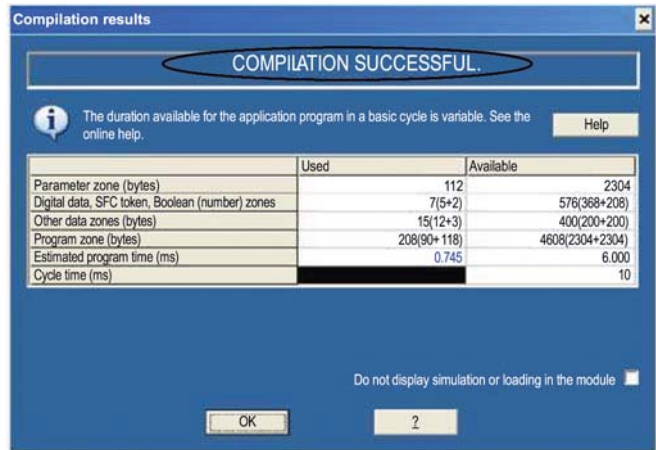
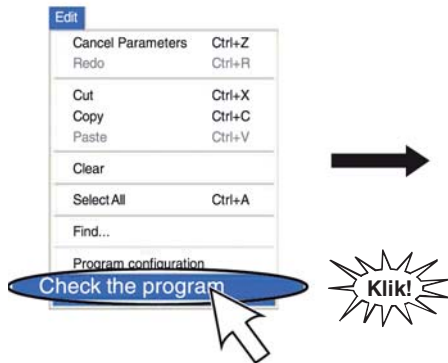


*Hodnota závisí na typu použitého čidla.







** Ukazuje vzdálenost v jaké máte ruku.

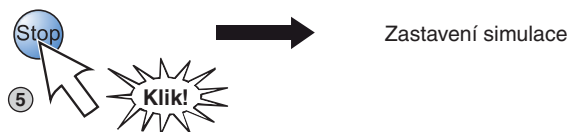
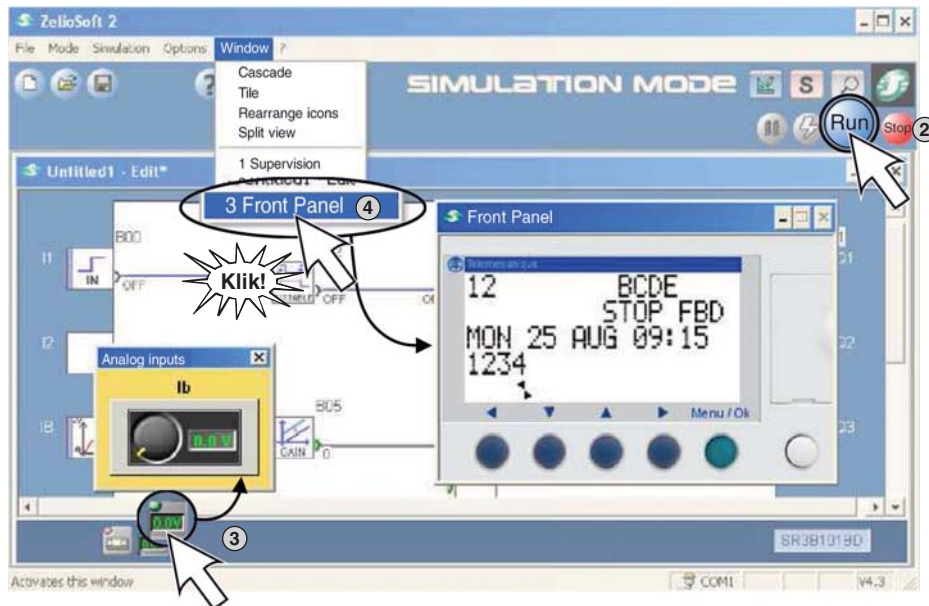
I Kontrola programu



J Simulace

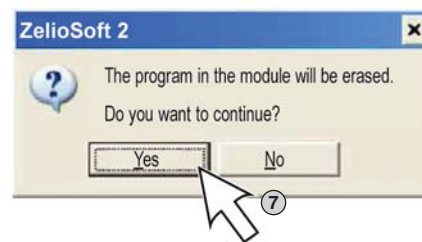
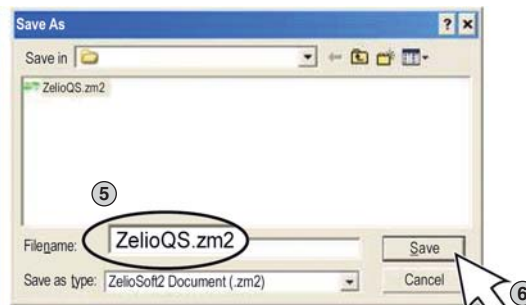
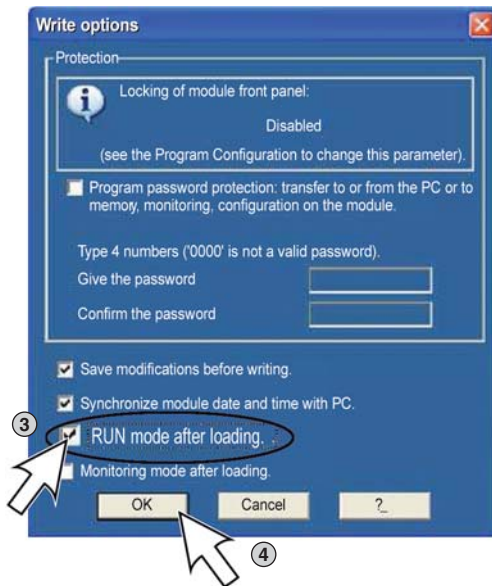
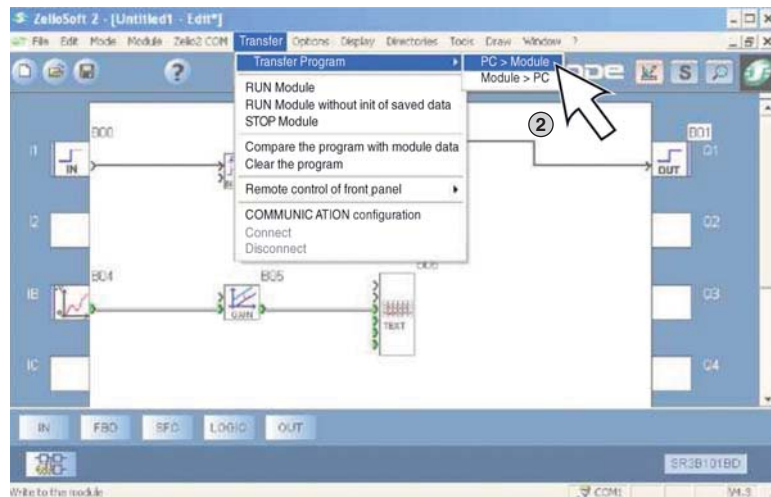


-  Spouštění programu.
-  Zastavení programu.
-  Přerušování programu.
-  Simulace výpadku napájení.

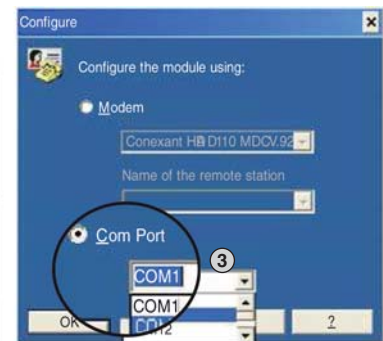
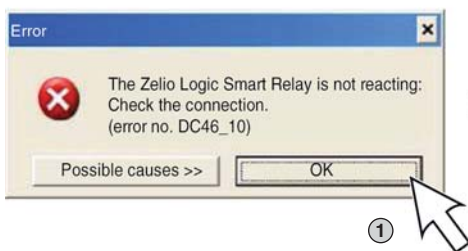


Zastavení simulace

K Přenos programu PC > modul



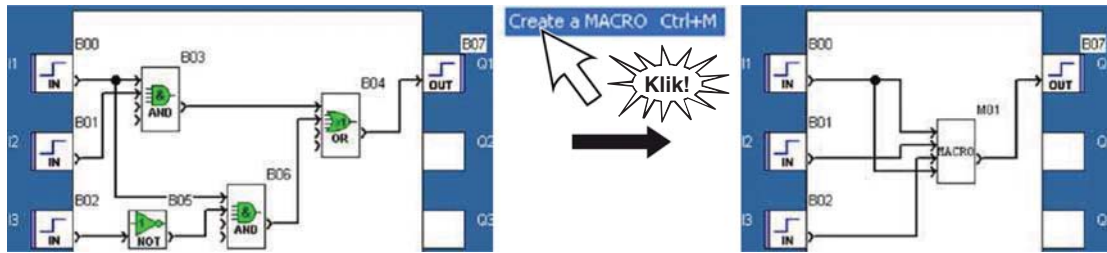
Pokud se objeví porucha, zkontrolujte číslo sériového portu.



Typy a triky

Co vše můžete dělat v Zelio Softu 2.

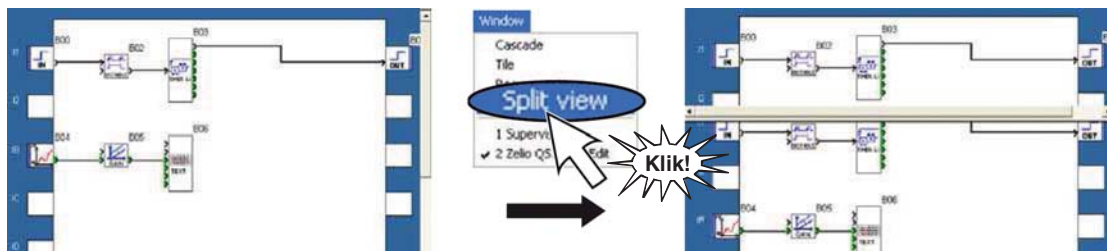
- Tvorba maker.



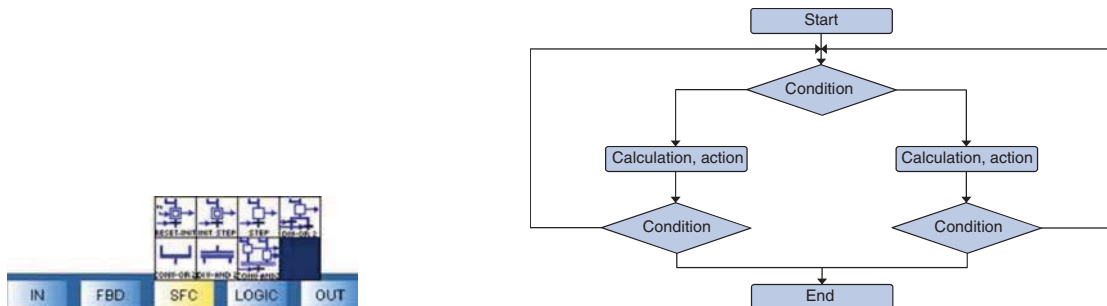
- Zákaznické provedení s importovanými obrázky.



- Rozdělení okna funkcí.



- Sekvenční programování.



Typické aplikace



Monitorování vzdálených aplikací.

- COM



Pohyblivé reklamní panely.

- CAM



Regulátory teploty

- BOOLEAN



Schneider Electric CZ, s. r. o.

Zákaznické centrum

Tel.: 382 766 333 – e-mail: info@cz.schneider-electric.com