



***Installing FactoryLink on a  
Windows 2000 Server with  
Terminal Services***

© Copyright 2000 United States Data Corporation. All rights reserved.

**NOTICE:**

The information contained in this document (and other media provided herewith) constitutes confidential information of United States Data Corporation ("USDATA") and is protected by copyright laws and international copyright treaties, as well as other intellectual property laws and treaties. Such information is not to be disclosed, used or copied by, or transferred to, any individual, corporation, company or other entity, in any form, by any means or for any purpose, without the express written permission of USDATA.

The information contained in this document and related media constitutes documentation relating to a software product and is being provided solely for use with such software product. The software product was provided pursuant to a separate license or other agreement and such information is subject to the restrictions and other terms and conditions of such license or other agreement.

The information contained in this document and related media is subject to change without notice and does not represent a commitment on the part of USDATA. Except for warranties, if any, set forth in the separate license or other agreement relating to the applicable software product, USDATA makes no warranty, express or implied, with respect to such information or such software product.

USDATA and Xfactory are registered trademarks of United States Data Corporation in the United States and/or other countries. All other brand or product names are trademarks or registered trademarks of their respective holders.

# *Installing FactoryLink on a Windows 2000 Server with Terminal Services*

This procedure assumes you have knowledge of the Windows 2000 Operating System (OS) and Internet administration.

Before attempting to install FactoryLink, make sure you meet hardware and software requirements.

## **Hardware Requirements**

FactoryLink requires a system with the following hardware requirements:

- 233 MHz CPU
- 128 MB RAM

**Note:** Additional CPU and RAM may be required depending on client load.

- CD-ROM drive
- SVGA monitor, 1024 x 768
- Keyboard and Windows 2000-compatible mouse

## **Software Requirements**

FactoryLink requires the following software to operate:

- Microsoft Windows 2000 Server with Terminal Services enabled in application mode

# Installing FactoryLink on a Windows 2000 Server with Terminal Services

Installing FactoryLink on a Windows 2000 Server with Terminal Services enabled in application mode is different from a normal installation because Terminal Services enabled is a multiuser environment. Also, the Add/Remove Program wizard must always be used when any application is installed on a Server with Terminal Services enabled.



### Caution

---

Before performing this procedure, Terminal Services must be enabled in application mode on a Windows 2000 Server.

---

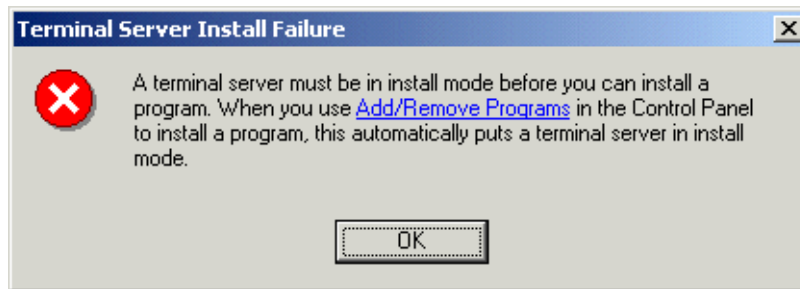
### To Install FactoryLink on a Windows 2000 Server with Terminal Services Enabled in Application Mode

- 1 Close all Windows programs that are running.  
If any other application is running, the install program will not start properly.
- 2 Insert the FactoryLink CD1 in the CD-ROM drive.
- 3 Is AutoRun enabled?
  - a If **No**, go to Step 4 on page 4.
  - b If **Yes**, go to Step 5 on page 4.
- 4 Click the **Start > Settings > Control Panel > Add/Remove Programs**, and then go to Step 6 on page 5.
- 5 After the **Terminal Server Install Failure** dialog box appears, click **Add/Remove Programs** on the dialog box.

## INSTALLING FACTORYLINK ON A WINDOWS 2000 SERVER WITH TERMINAL SERVICES

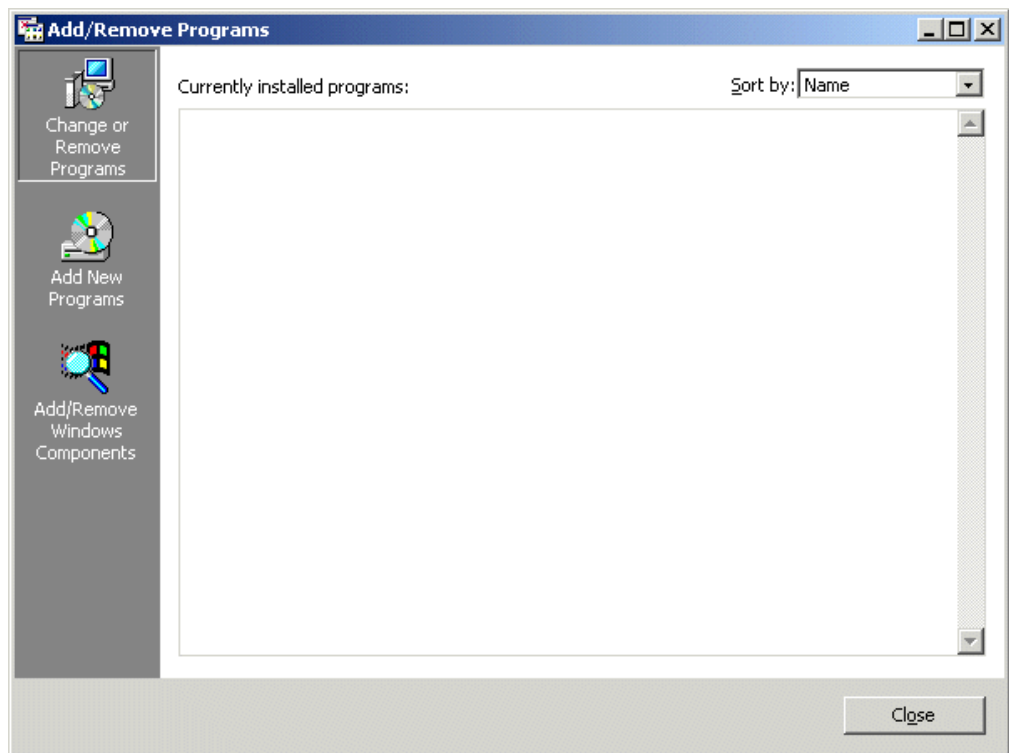
*Installing FactoryLink on a Windows 2000 Server with Terminal Services*

Following is an illustration of the **Terminal Server Install Failure** dialog box.



- 6 Click the **Add New Programs** icon on the **Add/Remove Programs** dialog box.

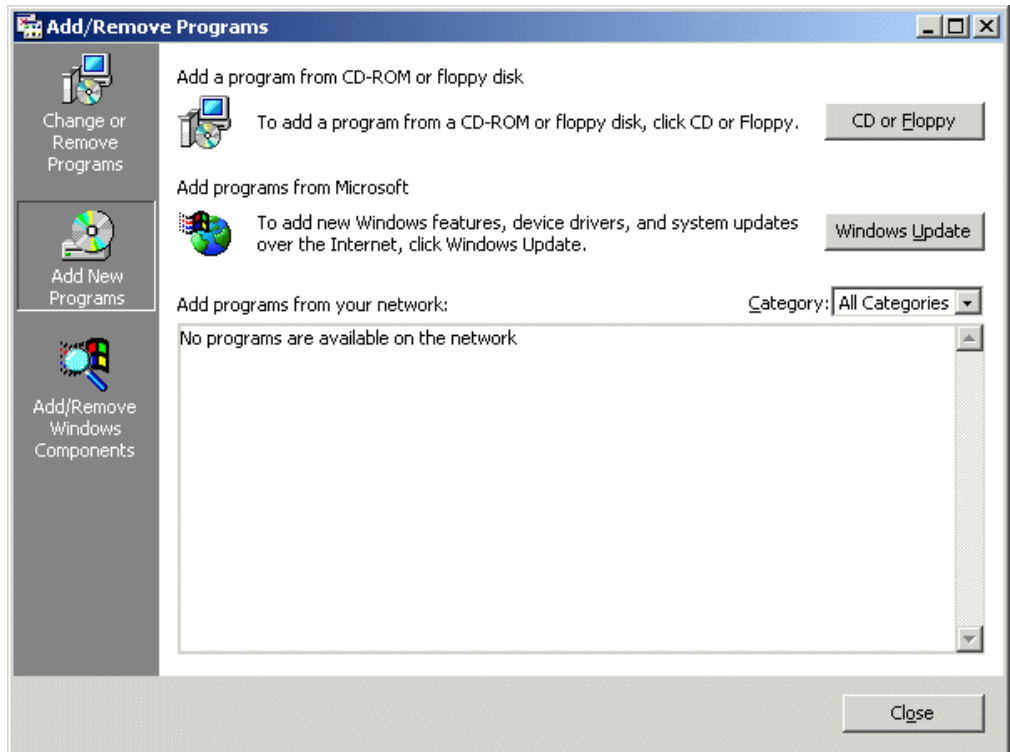
Following is an illustration of the **Add/Remove Programs** dialog box.



## INSTALLING FACTORYLINK ON A WINDOWS 2000 SERVER WITH TERMINAL SERVICES

*Installing FactoryLink on a Windows 2000 Server with Terminal Services*

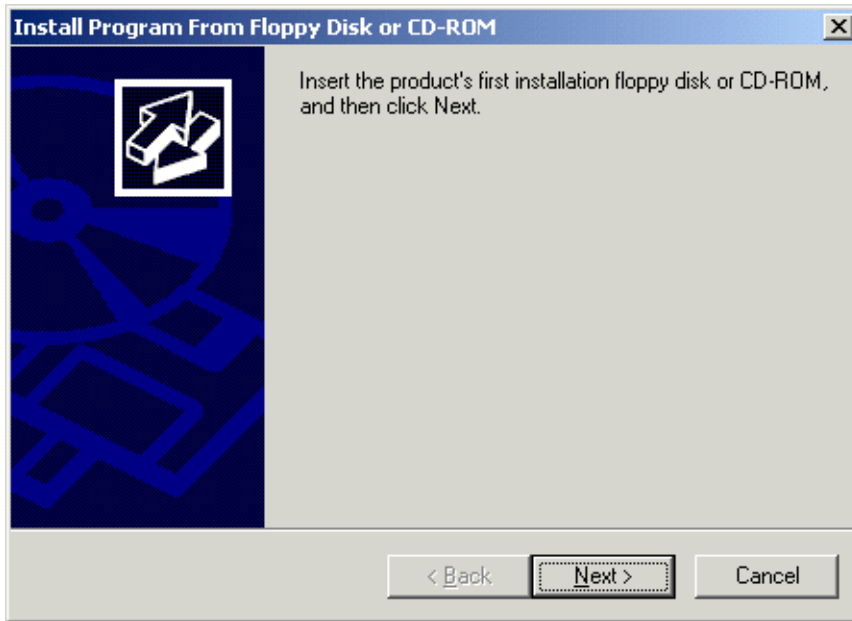
- 7 Click the **CD or Floppy** button on the **Add/Remove Programs** dialog box. Following is an illustration of the CD or Floppy button on the **Add/Remove Programs** dialog box.



## INSTALLING FACTORYLINK ON A WINDOWS 2000 SERVER WITH TERMINAL SERVICES

*Installing FactoryLink on a Windows 2000 Server with Terminal Services*

- 8 Click **Next** on the **Install Program From Floppy Disk or CD-ROM** dialog box.  
Following is an illustration of the **Install Program From Floppy Disk or CD-ROM** dialog box.

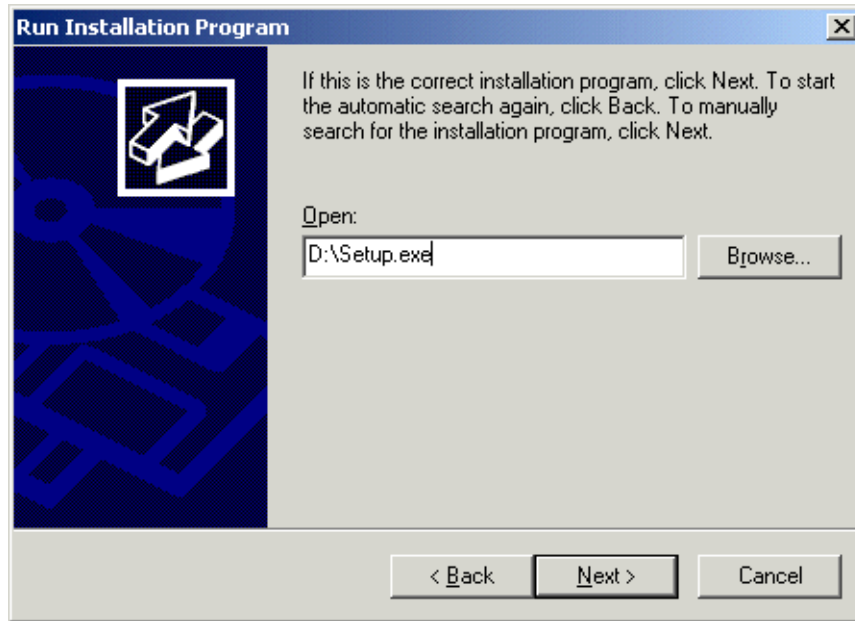


## INSTALLING FACTORYLINK ON A WINDOWS 2000 SERVER WITH TERMINAL SERVICES

*Installing FactoryLink on a Windows 2000 Server with Terminal Services*

- 9 Click **Next** on the **Run Installation** dialog box.

Following is an illustration of the **Run Installation** dialog box.



- 10 When the **Choose Setup Language** dialog box appears, proceed with normal installation. For more information, see Step 4 through Step 13 in Chapter 2 of the *FactoryLink Installation Guide*. Step 4 is “Choose Setup Language” and Step 13 is “Restart your computer.”

**Note:** After every computer restart, you will need to repeat Step 3 through Step 9 in this document until the FactoryLink installation is completed. Installing FactoryLink is usually accomplished in three stages. You install the first stage and then restart your computer. Next you install the second stage and then restart your computer. Next you install the third stage and restart your computer. If you did not install device drivers, the FactoryLink installation will be completed after the second restart.

- 11 After the restart is completed, repeat Step 3 on page 4 through Step 9 on page 8 in this document.
- 12 When the **Choose Setup Language** dialog box appears, proceed with normal installation.



For more information, see Step 14 through Step 28 in Chapter 2 of the FactoryLink Installation Guide. Step 14 is “Choose Setup Language” and Step 28 is “Restart your computer.”

- 13 After the restart is completed, repeat Step 3 on page 4 through Step 9 on page 8 in this document.

## Installing FactoryLink to Work in a Distributed Environment

To work in a distributed environment with FL7.0, some DCOM settings require editing. This procedure need only be done on the FactoryLink Server, nothing has to be done on client only installs. As a local/domain administrator on the FactoryLink Server, follow this procedure when working in a domain environment:

- 1 Install FactoryLink Server.
- 2 Run dcomcnfg.exe.
  - a From "Default Properties" tab, change the "Default Impersonation Level" to "Impersonate."
  - b From "Default Security" tab, give "Domain Users" permission to each "Default Permission."
- 3 Perform this step for the following applications:
  - USDATA OPC Development Server
  - USDATA OPCServer
  - USDATA Trend Datasource Server
  - FLAlarmServer
  - a Double-click on the application.
  - b Go to the "Identity" tab.
  - c Select "This user."
  - d Fill in user information with a domain user account (this information will probably come from your IT department.)

## INSTALLING FACTORYLINK ON A WINDOWS 2000 SERVER WITH TERMINAL SERVICES

*Installing FactoryLink to Work in a Distributed Environment*

**Note:** There is an error on pages 77 and 78 of the *FL7.0 Installation Guide*. It mentions that FLUtilityLauncher DCOM permissions need editing. Do not edit the properties of the FLUtilityLauncher.

If you will be running FactoryLink as a service (Autostart), change the logon user for the FactoryLink Autostart Service to the same account used in the DCOM settings.

## Installing TSAC on a Windows 2000 Server with Terminal Services

Installing Terminal Services Advanced Client (TSAC) on a Windows 2000 Server with Terminal Services enabled in application mode allows users to connect to the server through the Internet as if they were local.

Before installing TSAC, read the information on TSAC provided by Microsoft.



### Caution

---

TSAC could pose a security risk to your system.

---

### To Install TSAC on a Windows 2000 Server with Terminal Services Enabled in Application Mode

- 1 Download TSAC from the following URL: <http://www.microsoft.com>
- 2 Install TSAC to a folder that is accessible via the Internet.
- 3 If you are using a firewall, open ports 80 and 3389.
- 4 Set System Policy to protect your system.  
System Policy requires a Primary Domain Controller.

**Note:** Read the Microsoft article Q143164.

# **INSTALLING FACTORYLINK ON A WINDOWS 2000 SERVER WITH TERMINAL SERVICES**

*Installing TSAC on a Windows 2000 Server with Terminal Services*