

How to configure native shutdown on Macintosh OS X communicating with Back-UPS

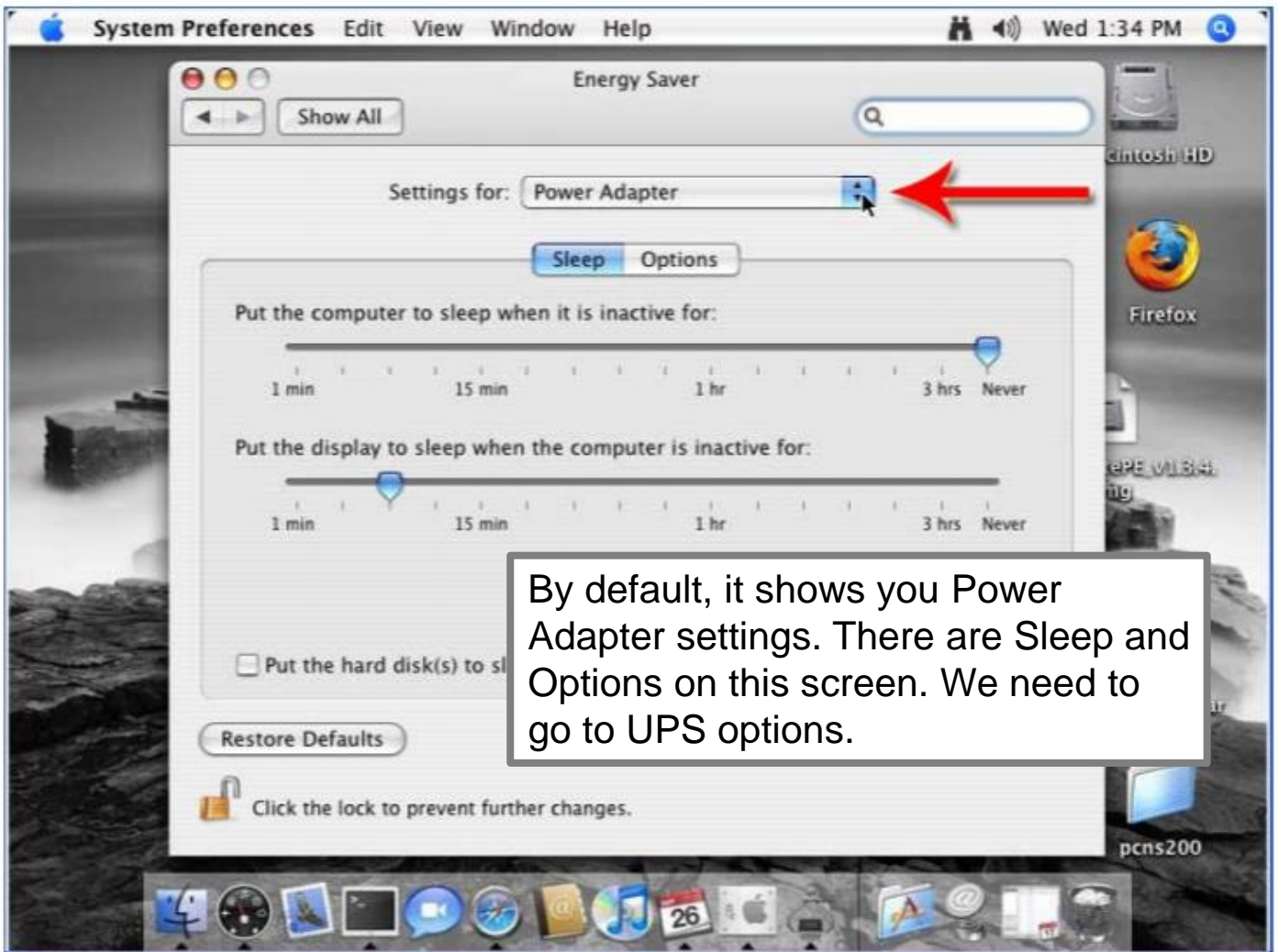
- 1 - Attached communications cable from Back-UPS to the computer.
- 2 - Select System preferences / Energy Saver / UPS Options
- 3 - Configure shutdown parameters.





Once on the system preferences screen, click on the Energy Saver icon. It looks like a light bulb.

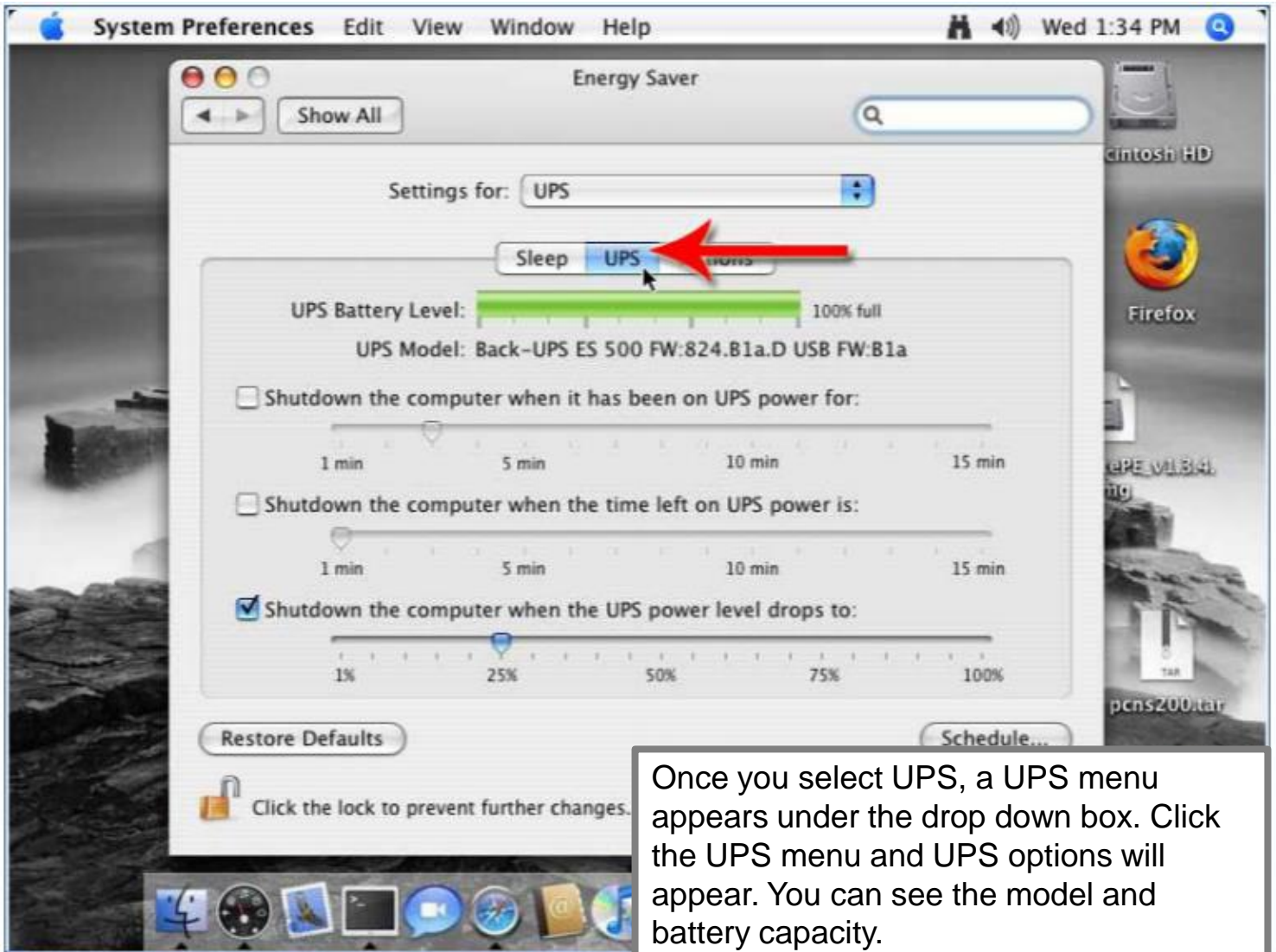
For Mac OS 10.5 and below



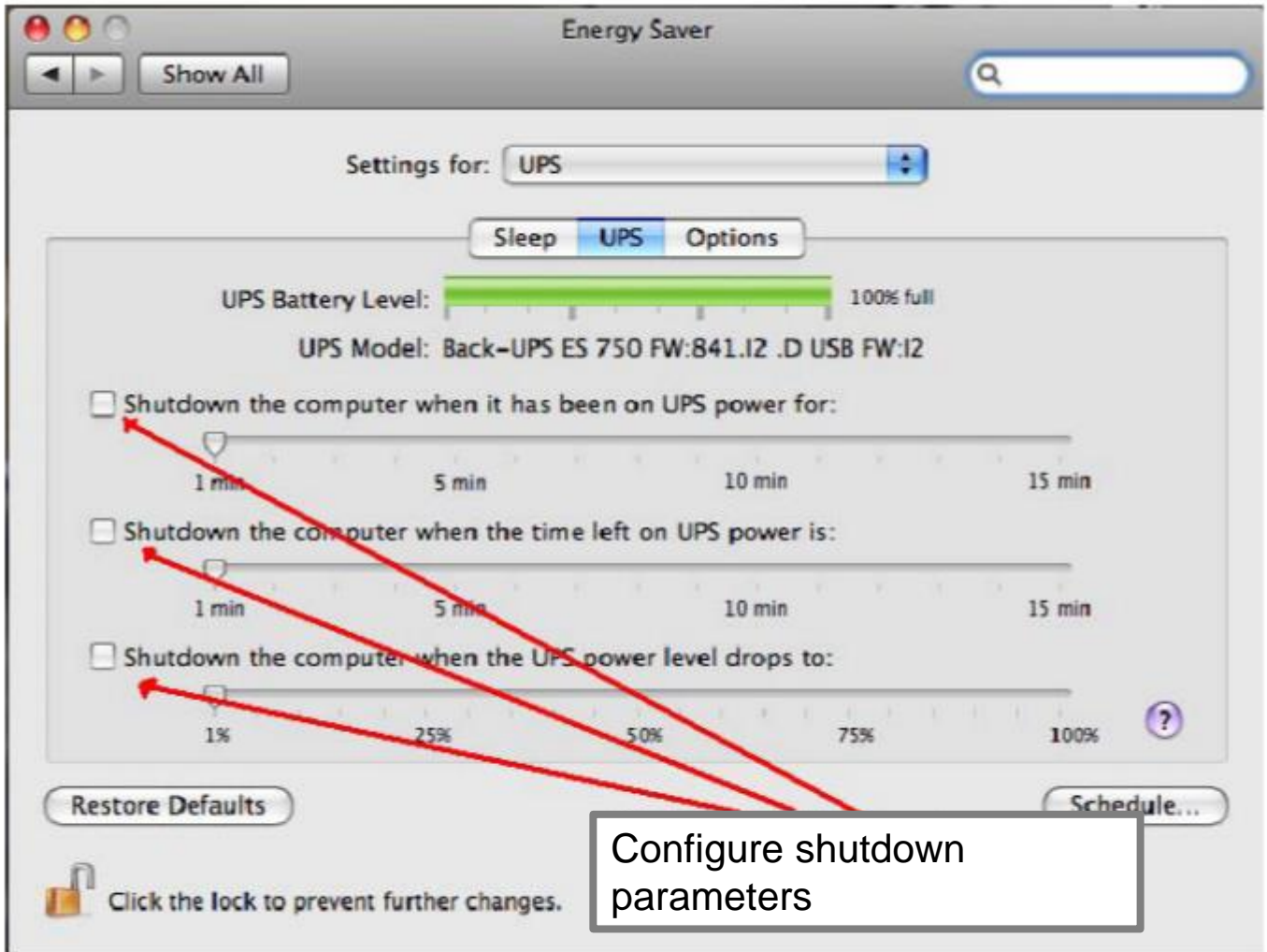


Life Is On

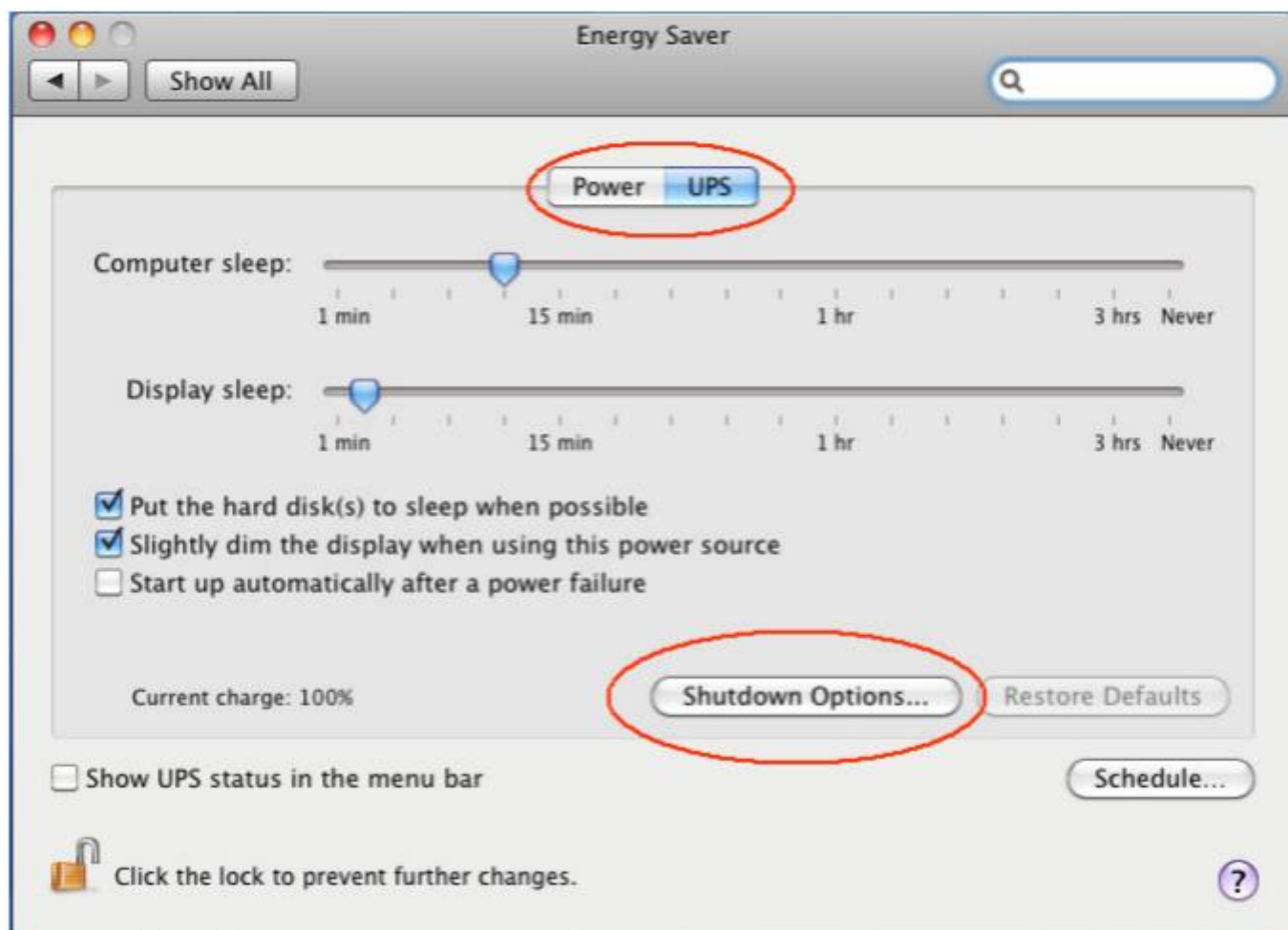




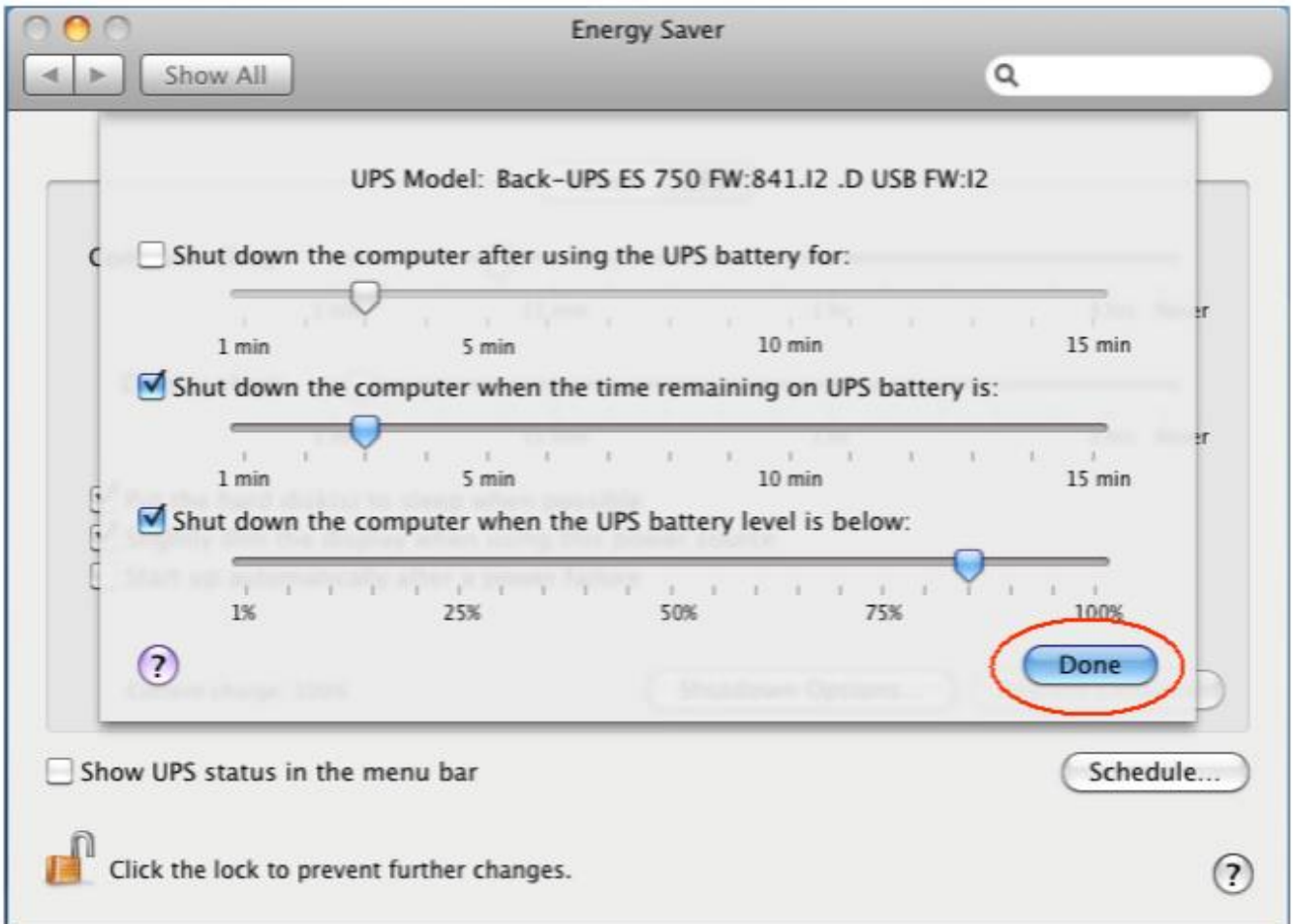
Once you select UPS, a UPS menu appears under the drop down box. Click the UPS menu and UPS options will appear. You can see the model and battery capacity.



For Mac OS 10.6 and above



Select UPS – Shutdown Options



Configure the options then select Done

Life Is On

