

# Easergy Studio

# Silent Installation/ Uninstallation

Easergy Studio  
Version: 9.2.0

Application Guide

Index: C  
Release: 09/2020

Life Is On



## CONTENTS

<b>1</b>	<b>INTRODUCTION .....</b>	<b>3</b>
<b>2</b>	<b>BATCH FILES.....</b>	<b>4</b>
<b>3</b>	<b>INSTALLSHIELD PREREQUISITES.....</b>	<b>5</b>
<b>4</b>	<b>RECORDING RESPONSE FILES FOR SILENT INSTALLATION .....</b>	<b>6</b>
4.1	PREPARATION .....	6
4.2	RECORDING .....	7
<b>5</b>	<b>EXECUTING SILENT INSTALLATION .....</b>	<b>9</b>
<b>6</b>	<b>RECORDING RESPONSE FILES FOR SILENT UNINSTALLATION.....</b>	<b>10</b>
<b>7</b>	<b>EXECUTING SILENT UNINSTALLATION .....</b>	<b>11</b>

# 1 Introduction

The Easergy Studio (ES) operating program and its tools largely support silent installation or uninstallation, which can be performed without an end user interface.

To perform a silent installation, a response file must first be created in which all end user interactions are recorded. This response file is then transferred to the installation file (\*.exe) so that the silent installation can be performed.

This Application Guide provides information on the sequence of work required to create response files and to perform a silent installation or uninstallation.

Further information can also be obtained from the Easergy Studio help function.

## 2 Batch files

Batch files (\*.cmd) are used for quick recording of response files and automated silent installation or uninstallation.

These files can be run directly from the Windows command prompt (cmd.exe).

Since the recording of response files and silent installation/uninstallation must be performed in administrator mode, also the batch files should include commands to be performed in administrator mode.

The creation of batch files is not part of this Application Guide and must be carried out at the user's own responsibility.

Schneider Electric does not guarantee the proper functioning of the user-specific batch files.

### 3 InstallShield prerequisites

Prerequisite for the proper installation and execution of Easergy Studio with its tools is the prior installation of **.NET Framework** and **Microsoft Visual C++ Redistributable Package** on the user's PC. The following software products are required:

**Microsoft .NET Framework 3.5 SP1**

**Microsoft .NET Framework 4.7.1 Full**

**Microsoft Visual C++ 2008 SP1 Redistributable Package**

**Microsoft Visual C++ 2008 SP1 Redistributable MFC Security Update KB2538243**

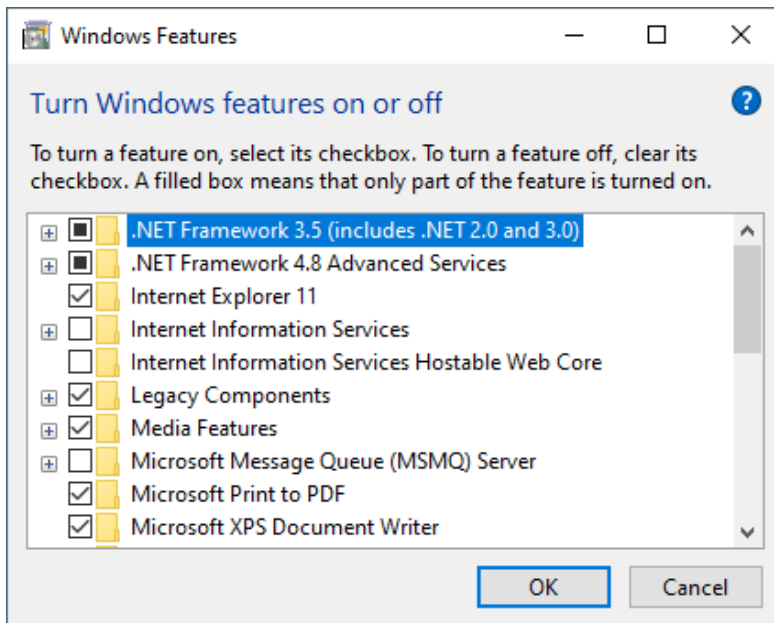
**Microsoft Visual C++ 2012 SP4 Redistributable Package**

**Microsoft Visual C++ 2017 Redistributable Package**

If these products are not yet available on the user's PC, this installation can also be carried out in silent mode.

Details of the procedure for silent installation can be found on the website of the respective software product. Additional notes with download links and command line parameters for silent installation are included in the Easergy Studio help function.

Microsoft .NET Framework 3.5 in Windows 10 and later must be enabled separately via *Turn Windows features on or off*.



The following is an example with an extract from a batch file (\*.cmd) for silent installation of the above tools:

```
start /wait "" "%~dp0msxml4_x86.msi" /quiet /passive
start /wait "" "%~dp0NDP471-KB4033342-x86-x64-AllOS-ENU.exe" /passive /norestart
start /wait "" "%~dp0vc redistrib_2008_x86_9.0.30729.17.exe" /q /r:n
start /wait "" "%~dp0vc redistrib_2008_x86_9.0.30729.5677.exe" /q /r:n
start /wait "" "%~dp0vc redistrib_2012_x86_11.0.61030.0.exe" /q /norestart
start /wait "" "%~dp0vc redistrib_2017_x86_14.13.26020.0.exe" /q /norestart
```

## 4 Recording response files for silent installation

### 4.1 Preparation

Recording and subsequent silent installation of the main Easergy Studio installation program together with its tools in one go is not supported.

Therefore, the following tools with individual installation programs must be installed separately:

#### **CET850**

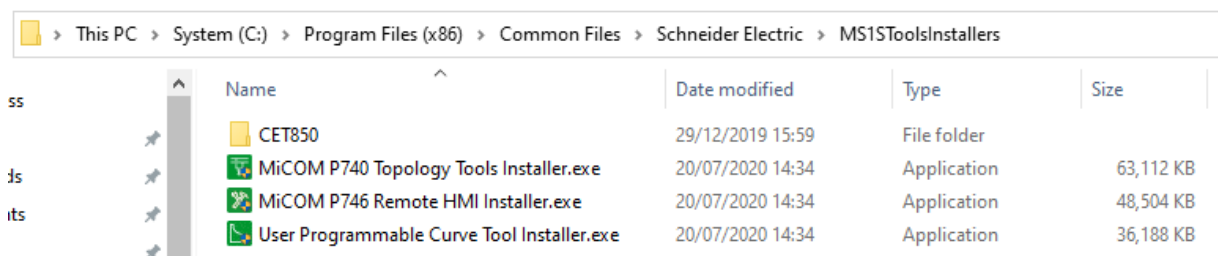
#### **MiCOM P740 Topology Tools**

#### **MiCOM P746 Remote HMI**

#### **User Programmable Curve Tool**

The following steps (1) - (3) are necessary to obtain the installation files (\*.exe) of the above mentioned tools. If these tools are not needed, *chapter 4.1* can be skipped completely.

1. Install Easergy Studio complete with all tools you want to use.



	Name	Date modified	Type	Size
ss	CET850	29/12/2019 15:59	File folder	
js	MiCOM P740 Topology Tools Installer.exe	20/07/2020 14:34	Application	63,112 KB
its	MiCOM P746 Remote HMI Installer.exe	20/07/2020 14:34	Application	48,504 KB
	User Programmable Curve Tool Installer.exe	20/07/2020 14:34	Application	36,188 KB

2. The installation files (\*.exe) of the tools, which will later be installed separately, are stored in the following directory after the complete installation of Easergy Studio: It is recommended to copy the complete content of the "/MS1SToolsInstallers" directory to another location, otherwise it will be removed in the next step (3) when uninstalling Easergy Studio.

The IEC61850 Configurator CET850 for the Schneider Electric P3/P5 device series cannot currently be installed silently. An individual installation is necessary here if required.

3. Completely uninstall Easergy Studio.

## 4.2 Recording

The following commands must be executed at the Windows command prompt in administrator mode:

### User Programmable Curve Tool

```
"User Programmable Curve Tool Installer.exe" -s -f1".\UPCT_inst_recorded_steps.iss"
```

### MiCOM P740 Topology Tools

```
"MiCOM P740 Topology Tools Installer.exe" -s -f1".\P740_inst_recorded_steps.iss"
```

### MiCOM P746 Remote HMI

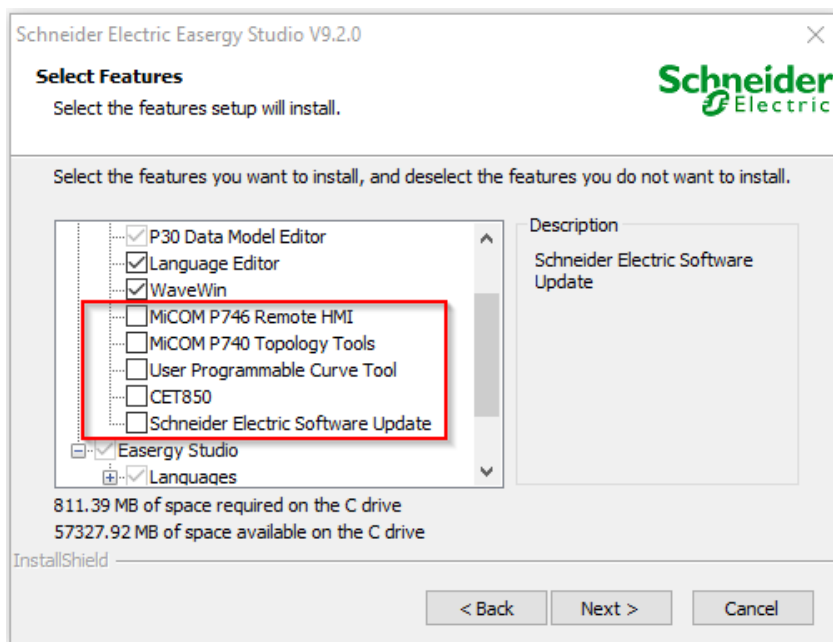
```
"MiCOM P746 Remote HMI Installer.exe" -s -f1".\P746_inst_recorded_steps.iss"
```

### Easergy Studio

```
"Easergy Studio V9.2.0 Installer.exe" -s -f1".\ES_inst_recorded_steps.iss"
```

Further command line options can be found in the help function of "cmd" or of Easergy Studio.

While recording the Easergy Studio installation, the tools with separate installation programs, CET850, and Schneider Electric Software Update (SESU), must be deactivated.



SESU is not required for centralized software management with silent installation/uninstallation, as SESU would notify the user of available updates and enable the installation of these updates separately.

Below is an example with an extract of a batch file (\*.cmd) to record the installation of **MiCOM P740 Topology Tools**.

```
echo.  
echo Response file recording *.iss for MiCOM P740 Topology Tools  
echo.  
echo ... please be patient during creation...  
echo.  
echo.  
"MiCOM P740 Topology Tools Installer.exe" -r -f1".\P740_inst_recorded_steps.iss"  
echo.  
echo.  
echo Creation finished. This window can be closed now.  
echo.  
echo.  
endlocal  
pause
```

After all recordings have been made, 4 response files (\*.iss) are available for silent installations.



## 5 Executing silent installation

The following commands must be executed at the Windows command prompt in administrator mode:

### User Programmable Curve Tool

```
"User Programmable Curve Tool Installer.exe" -s -f1".\UPCT_inst_recorded_steps.iss"
```

### MiCOM P740 Topology Tools

```
"MiCOM P740 Topology Tools Installer.exe" -s -f1".\P740_inst_recorded_steps.iss"
```

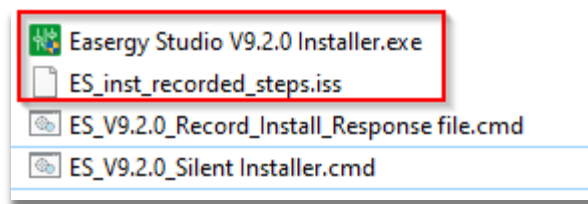
### MiCOM P746 Remote HMI

```
"MiCOM P746 Remote HMI Installer.exe" -s -f1".\P746_inst_recorded_steps.iss"
```

### Easergy Studio

```
"Easergy Studio V9.2.0 Installer.exe" -s -f1".\ES_inst_recorded_steps.iss"
```

When using the above commands, the installation files (\*.exe) must be saved in the same directories as the response files (\*.iss) before executing the commands:



The installation is performed in the background without display at the user interface.

Note: Make sure that the firewall rules for network communication are written during installation. If, in rare cases, this is not automatic, it can be taken into account in the batch file.

The following is an example with an extract from a batch file (\*.cmd) for silent installation of **Easergy Studio**:

```
echo.
echo Easergy Studio V9.2.0 will be installed with default settings
echo and without MiCOM P746 Remote HMI, MiCOM P740 Topology Tools,
echo User Programmable Curve Tool, CET850 and SESU.
echo.
echo ... please be patient during installation...
echo.
echo.
"Easergy Studio V9.2.0 Installer.exe" -s -f1".\ES_inst_recorded_steps.iss"
-f2"%temp%\ES_V9.2.0_Silent Installer.log"
echo.
netsh advfirewall firewall add rule name="Schneider Electric Easergy Studio"
dir=in program="C:\Program Files (x86)\Schneider Electric\MiCOM S1
Studio\Studio\Studio.exe" action=allow
echo.
echo Installation finished. This window can be closed now.
echo.
echo.
endlocal
pause
```

## 6 Recording response files for silent uninstallation

The following commands must be executed at the Windows command prompt in administrator mode:

### User Programmable Curve Tool

```
"C:\Program Files (x86)\InstallShield Installation Information\{507B3E50-944B-4B65-A95F-A86A57EE930A}\setup.exe" -r -f1".\UPCT_uninst_recorded_steps.iss" -removeonly
```

### MiCOM P740 Topology Tools

```
"C:\Program Files (x86)\InstallShield Installation Information\{43C3225D-2485-4D82-B530-B7031DF5CD70}\setup.exe" -r -f1".\P740_uninst_recorded_steps.iss" -removeonly
```

### MiCOM P746 Remote HMI

```
"C:\Program Files (x86)\InstallShield Installation Information\{4063C858-7A73-4756-9925-A3E36CB4551A}\setup.exe" -r -f1".\P746_uninst_recorded_steps.iss" -removeonly
```

### Easergy Studio

```
"C:\Program Files (x86)\InstallShield Installation Information\{3623617D-885C-4195-AF04-594725BD6F62}\setup.exe" -r -f1".\ES_uninst_recorded_steps.iss" -removeonly
```

Below is an example with an extract of a batch file (\*.cmd) to record the uninstallation of **MiCOM P740 Topology Tools**.

```
echo.
echo Record Uninstallation Response File *.iss for MiCOM P740 Topology Tools
echo.
echo ... please be patient during creation...
echo.
echo.
echo.
"C:\Program Files (x86)\InstallShield Installation
Information\{43C3225D-2485-4D82-B530-B7031DF5CD70}\setup.exe" -r
-f1".\P740_uninst_recorded_steps.iss" -removeonly
echo.
echo.
echo Creation finished. This window can be closed now.
echo.
echo.
endlocal
pause
```

After all recordings have been made, 4 response files (\*.iss) are available for silent uninstallation.

## 7 Executing silent uninstallation

The following commands must be executed at the Windows command prompt in administrator mode:

### User Programmable Curve Tool

```
"C:\Program Files (x86)\InstallShield Installation Information\{507B3E50-944B-4B65-A95F-A86A57EE930A}\setup.exe" -s -f1".\UPCT_uninst_recorded_steps.iss" -removeonly
```

### MiCOM P740 Topology Tools

```
"C:\Program Files (x86)\InstallShield Installation Information\{43C3225D-2485-4D82-B530-B7031DF5CD70}\setup.exe" -s -f1".\P740_uninst_recorded_steps.iss" -removeonly
```

### MiCOM P746 Remote HMI

```
"C:\Program Files (x86)\InstallShield Installation Information\{4063C858-7A73-4756-9925-A3E36CB4551A}\setup.exe" -s -f1".\P746_uninst_recorded_steps.iss" -removeonly
```

### Easergy Studio

```
"C:\Program Files (x86)\InstallShield Installation Information\{3623617D-885C-4195-AF04-594725BD6F62}\setup.exe" -s -f1".\ES_uninst_recorded_steps.iss" -removeonly
```

The uninstallation is performed in the background without display at the user interface.

The following is an example with an extract from a batch file (\*.cmd) for uninstalling **Easergy Studio**.

```
echo.
echo.
echo Easergy Studio V9.2.0 will be uninstalled now.
echo.
echo The Tools 'MiCOM P746 Remote HMI', 'MiCOM P740 Topology Tools',
echo 'User Programmable Curve Tool', 'CET850' must be uninstalled separately.
echo.
echo ... please be patient during uninstallation...
echo.
echo.
"C:\Program Files (x86)\InstallShield Installation
Information\{3623617D-885C-4195-AF04-594725BD6F62}\setup.exe" -s
-f1".\ES_uninst_recorded_steps.iss" -f2"%temp%\Easergy Studio V9.2.0
uninstall.log" -removeonly
echo.
echo.
echo Uninstallation finished. This window can be closed now.
echo.
echo.
pause
```

Further information on products, solutions and services for protective systems, substation and network automation can be found on the Internet:

[www.se.com](http://www.se.com)

---

**Schneider Electric GmbH**

Energy Automation  
Steinheimer Straße 117  
63500 Seligenstadt  
Tel.: +49 (0) 61/8281-3333  
[www.se.com/de](http://www.se.com/de)

**E-mail addresses:**

Germany

Austria

Switzerland

**Schneider Electric  
Austria AG**

Energy Automation  
Am Euro Platz 2/ Stiege 6/ 3. OG  
A-1120 Wien  
Tel.: +43 (0) 1 614 71 11  
[www.se.com/at](http://www.se.com/at)

[de-schneider-service@se.com](mailto:de-schneider-service@se.com)

[office.at@se.com](mailto:office.at@se.com)

[customercare.ch@se.com](mailto:customercare.ch@se.com)

**Schneider Electric  
(Schweiz) AG**

Energy Automation  
Hardstrasse 72-74  
CH-5430 Wettingen  
Tel.: +41 (0) 56 437 34 34  
[www.se.com/ch](http://www.se.com/ch)

Our policy is one of continuous development. Accordingly the design of our products may change at any time. Whilst every effort is made to produce up-to-date literature, this document should only be regarded as a guide and is intended for information purposes only. Its contents do not constitute an offer for sale or advise on the application of any product referred to in it. We cannot be held responsible for any reliance on any decisions taken on its contents without specific advice.

Publishing: Schneider Electric  
Design: Schneider Electric  
Print: