

# EcoStruxure™ Machine SCADA Expert Import Tool for PanelMate™ Users Guide

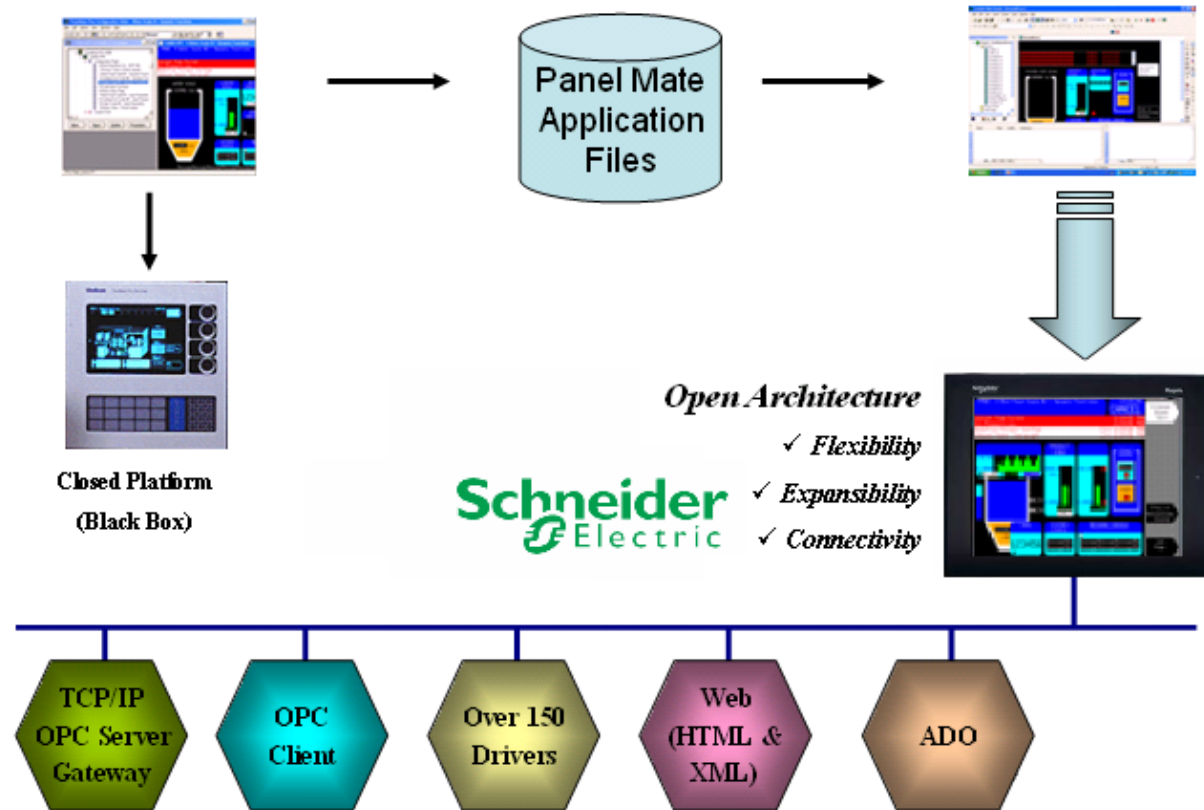
12/2018

## Contents

<b>Contents</b> .....	<b>2</b>
<b>Introduction</b> .....	<b>3</b>
<b>Import Wizard Requirements</b> .....	<b>5</b>
<b>Import Wizard Procedure</b> .....	<b>6</b>
<b>Release Notes</b> .....	<b>9</b>
Graphical Interface .....	9
Graphical Objects .....	9
Special Tags for Graphic Interface Support .....	11
Alarm Configuration.....	12
Security System.....	12
Communication Interface.....	13
<b>Additional Notes</b> .....	<b>15</b>

## Introduction

Schneider-Electric introduces the **EcoStruxure™ Machine SCADA Expert Import Tool for PanelMate™** — a powerful, flexible, easy-to-use tool that expands the capabilities of your installed plant floor systems. The **EcoStruxure™ Machine SCADA Expert Import Tool** is a fast and intuitive wizard for importing applications created with PanelMate™ Plus™ software into EcoStruxure™ Machine SCADA Expert.



**Using the EcoStruxure™ Machine SCADA Expert Import Tool to import PanelMate™ Applications to EcoStruxure™ Machine SCADA Expert**

**Note:**

The **EcoStruxure™ Machine SCADA Expert Import Tool for PanelMate™** is compatible with applications based on the the PanelMate™ Plus Configuration Editor – Version 4.01b0. Applications created with different versionf of this software may be incompatible with the import wizard.

**Caution:**

The **EcoStruxure™ Machine SCADA Expert Import Tool for PanelMate™** is an Add-On feature of EcoStruxure™ Machine SCADA Expert. Your license needs to support this specific feature; otherwise, you will be unable to use it. Please consult your software vendor for further information.

After importing an application into EcoStruxure™ Machine SCADA Expert, you can take advantage of these EcoStruxure™ Machine SCADA Expert features:

- **Flexibility:** EcoStruxure™ Machine SCADA Expert can run the application on any Microsoft® Windows® platform (7/8.1/10 and Servers).
- **Expansibility:** You can use the EcoStruxure™ Machine SCADA Expert development suite to add functionality to your application in the form of historical data, XML reports, math scripts, etc.
- **Connectivity:** Because the application is running under the EcoStruxure™ Machine SCADA Expert runtime, you can take advantage of all connectivity tools embedded in the EcoStruxure™ Machine SCADA Expert package, such as:
  - Communication drivers for several protocols from different manufacturers (Modbus, Profibus DP, DeviceNET, ControlNET, Siemens S7 – MPI/PPI, Siemens S5 – RK512, GE-Fanuc SNP/SRTP and many others)
  - OPC client and server interfaces
  - XML and ADO interfaces to exchange data with third-party systems, such as Enterprise Resource Planning (ERP) systems
  - API Toolkits to integrate the application with third-party programs written in any language that supports DLLs (VB, C, C++, and so on)
  - TCP/IP modules for redundant and networked applications
  - Web solution that provides remote access to your application using just a Web browser, through any TCP/IP link (intranet, internet, or dial-up connection)
  - Remote management and debugging tools that allow you to manage (download, upload, run, stop and debug) your application remotely from a development station

**The Import Tool's greatest advantage is how easy it is to use, which can dramatically reduce the cost and hassle of modernizing the automation systems in your facility.**

## Import Wizard Requirements

To import a PanelMate™ application, you must install the following software on your computer:

1. EcoStruxure™ Machine SCADA Expert with the **EcoStruxure™ Machine SCADA Expert Import Tool** add-on
2. PanelMate™ programming software
3. PanelMate™ database files (.db files that are usually found in c:\pmconfig\model directory)

 **Note:**

You can run the EcoStruxure™ Machine SCADA Expert development system on Windows 7/8.1/10 operating systems. For detailed information about EcoStruxure™ Machine SCADA Expert hardware and software requirements, see the *EcoStruxure™ Machine SCADA Expert Users Guide and Technical Reference Manual*.

## Import Wizard Procedure

The **Import Tool** provides a simple, straightforward wizard to guide you through the process of importing PanelMate™ projects into EcoStruxure™ Machine SCADA Expert.

Use the following procedure to import the PanelMate™ application report into EcoStruxure™ Machine SCADA Expert:

1. Start EcoStruxure™ Machine SCADA Expert, **running it as Administrator**, by selecting **Start > All Programs > EcoStruxure Machine SCADA Expert > right-clicking on “EcoStruxure Machine SCADA Expert”** and selecting **“Run as Administrator”**
2. When EcoStruxure™ Machine SCADA Expert opens, click the **Home > Tools > Import Wizard**. This opens the *EcoStruxure™ Machine SCADA Expert Import Tool Wizard*:

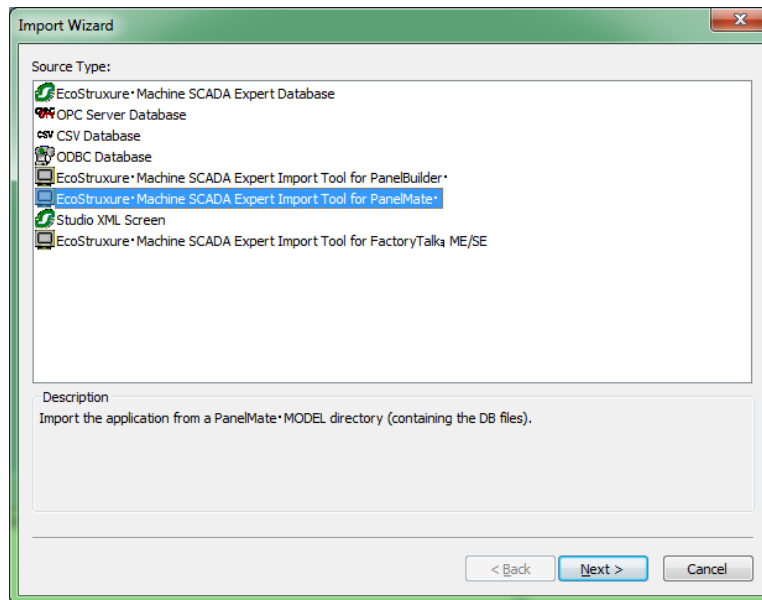


**Opening the Import Wizard**

**Note:**

You can use the *EcoStruxure™ Machine SCADA Expert Import Wizard* to import application data from sources other than PanelMate™ applications. For more information about importing other application types, refer to the *EcoStruxure™ Machine SCADA Expert Users Guide and Technical Reference Manual*.

3. When the *Import Wizard* dialog displays, click **EcoStruxure™ Machine SCADA Expert Import Tool for PanelMate™** from the **Source Type** list, and then click **Next**.

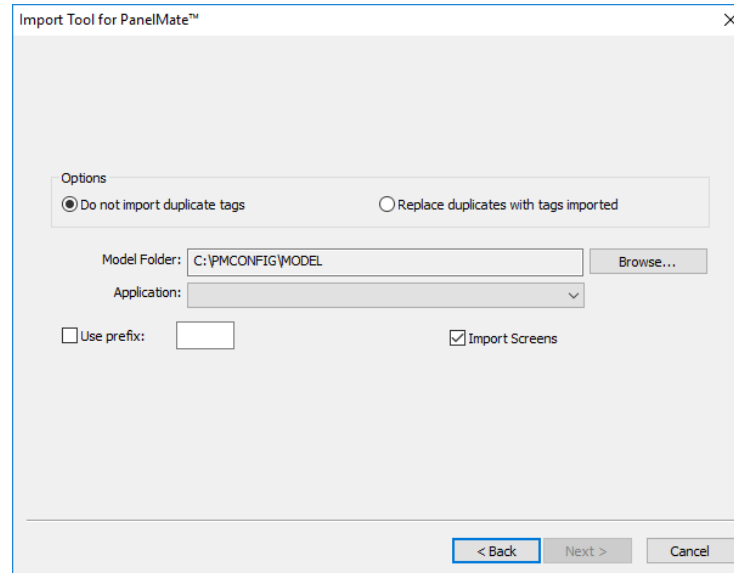


**Selecting the Application to Import**

**Note:**

If the EcoStruxure™ Machine SCADA Expert license installed in your computer does not support the **EcoStruxure™ Machine SCADA Expert Import Tool for PanelMate™**, you will be unable to proceed.

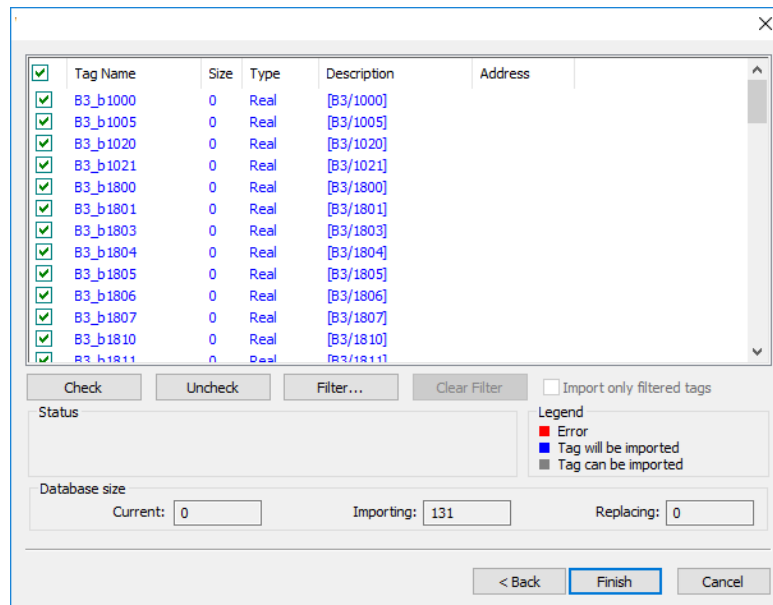
The *Import Tool for PanelMate™ Wizard* dialog displays:



***Import Tool for PanelMate™ Wizard***

- Use this dialog to specify the following import parameters, and then click **Next**.:
  - Do not import duplicate tags** radio button: Click (*enable*) this option to prevent the *Import Tool for PanelMate™ Application Wizard* from importing tags with the same name as tags in the current EcoStruxure™ Machine SCADA Expert application database.
  - Replace duplicates with tags imported** radio button: Click (*enable*) this option if you want the wizard to replace duplicate tag properties in the current EcoStruxure™ Machine SCADA Expert application database.
  - Use prefix** check-box and text box: Click (*enable*) this option if you want to add a prefix to all imported tags. Because you can import multiple PanelMate™ applications into a single EcoStruxure™ Machine SCADA Expert application, this feature is provided to help you identify where the imported application tags originated and to avoid duplications. Enter a prefix into the text field.
  - Import Screens** check-box and text field: Clear (*disable*) this option to prevent the wizard from importing the PanelMate™ application screens.
  - Model Folder** textbox: This field displays the path and name of the folder where the PanelMate application database is saved. The customary location is **C:\PMCONFIG\MODEL**, in a computer where the PanelMate™ programming software is installed. Click the **Browse** button to select a different folder.
  - Application** combo box: If you select a model folder containing a valid PanelMate™ application database, a list of all applications stored in the database will appear in this combo box. Click on the application you want to import.

The *Import Wizard* will read the database and then display a new dialog listing all the tags in the report file (similar to the following figure).



**List of Tags in the PanelMate™ Application**

The tags are color-coded to indicate which tags will be imported:

- **Blue tags** will be imported. (If you *do not* want to import one of these tags, simply click in the check-box to the left of the tag name.)
- **Red tags** will not be imported. (If you enabled the **Do not import duplicate tags** option, the wizard will not import tags that already exist in the EcoStruxure™ Machine SCADA Expert application database.)
- **Gray tags** can be imported. Tags become gray in two circumstances:
  - You cleared the check-box to the left of an importable (blue) tag, which changes the blue tag to gray.
  - You have met, or exceeded, the number of tags allowed by your EcoStruxure™ Machine SCADA Expert license. For example, if your license allows 1,500 tags, and you would exceed this limit by importing the grey tags, EcoStruxure™ Machine SCADA Expert will not allow the wizard to add these tags to the EcoStruxure™ Machine SCADA Expert database.

You can import gray tags (by clicking in the check-box to the left of the tag name), as long as you do not exceed the number of tags allowed by your EcoStruxure™ Machine SCADA Expert license.

5. Click the **Finish** button to import the application according to the import parameters you specified in the previous step.



## Release Notes

The **EcoStruxure™ Machine SCADA Expert Import Tool** can be enhanced for future versions; this release implements the most important features.

Because both EcoStruxure™ Machine SCADA Expert is much more powerful than PanelMate™, it is possible to work around the items that are not imported by implementing some minor changes in the application. If, however, your application uses one of the features that the import wizard does not import, and you think that you will spend a lot of time implementing this feature in your application, please contact your EcoStruxure™ Machine SCADA Expert representative or send an e-mail to your vendor. We will analyze the feasibility of implementing that specific feature.

### Graphical Interface

The graphical tools offered by EcoStruxure™ Machine SCADA Expert software surpass the capabilities of any other tool available on the market. Also, the same features can be available in several software products but implemented differently in each.

When you import a PanelMate™ application with the **Import Tool**, you will notice that the imported graphical interface may look slightly different from the original one. The text fonts may change, and scrollbars may appear inside some visual components. This occurs because the development philosophy at EcoStruxure™ Machine SCADA Expert is to implement Windows standards; PanelMate™ applications are tied to other very specific hardware and software vendors and standards.

Despite these differences, the **Import Tool** creates an EcoStruxure™ Machine SCADA Expert application that closely simulates the look and feel of the PanelMate™ user interface. After you have imported a PanelMate™ application, you can enhance its functionality by using the superior graphical components available in EcoStruxure™ Machine SCADA Expert.

### Graphical Objects

The **Import Tool** converts every page of a PanelMate™ application into an EcoStruxure™ Machine SCADA Expert screen file named **ScreenXX.src**, where **XX** is the number of the page. The wizard creates additional screens, with names prefixed by **Screen** and **Crt1**. These screens provide support for the dynamics of many graphical elements, and must not be removed from the application.

EcoStruxure™ Machine SCADA Expert graphic components are generally more sophisticated than PanelMate™ elements. In order to reproduce the appearance and behavior of a PanelMate™ application in the EcoStruxure™ Machine SCADA Expert environment, the **Import Tool** translates most PanelMate™ templates into groups of several EcoStruxure™ Machine SCADA Expert objects. These groups of objects contain dynamics and VBScript code that enable them to behave like their counterparts in PanelMate™.

The next table lists all the objects supported by PanelMate™, and briefly describes how these objects are mapped to EcoStruxure™ Machine SCADA Expert components. Some features of these components are not supported in this release of the **Import Tool**.

PanelMate™ Plus original object	EcoStruxure™ Machine SCADA Expert converted object	Limitations, Restrictions and Remarks
Line	Open Polygon	-
Rectangle	Rectangle	-
Ellipse	Ellipse	-
Arc	Open Polygon or Closed Polygon	The “arc” is created with consecutive lines, with a resolution of 5 degrees.
Polygon	Open Polygon or Closed Polygon	-
Text	Text or Bitmap	Text Font: Text in Normal, Double High and Quad fonts are converted to EcoStruxure™ Machine SCADA Expert Text, with the standard Windows fonts. Text in Graphic fonts are converted to bitmaps.
Symbol	Group of Symbols	-
Bitmap	Bitmap	-
Indicator Template	Group of Symbols	-
Readout Template	Group of Symbols	The object does not change its color to red in an alarm condition.
Bar Template	Group of Symbols	Does not show the blinking warning ( <b>ALARM!</b> ) indicating the alarm condition
Table Template	-	This object is not converted at all.
Bar Trend Template or Line Trend Template	Group of Symbols	<ul style="list-style-type: none"> <li>▪ Bar trends and Line Trends are converted into ActiveX controls.</li> <li>▪ The object does not change its color to red in the alarm condition.</li> <li>▪ Does not show the blinking warning (<b>ALARM!</b>) indicating the alarm condition</li> </ul>
Display Template	Group of Symbols	Graphic, Double High or Quad font types are not supported. During the importing process, these fonts are converted to the available Windows font that best matches the PanelMate™ font.
Variable-Sized Indicator Template	Group of Symbols	-
Variable-Sized Readout Template	Group of Symbols	The object does not change its color to red in the alarm condition.
Variable-Sized Bar Template	Rectangle + Bargraph	The object does not change its color to red in the alarm condition.
Variable-Sized Display Template	Smart Message	Graphic, Double High or Quad font types are not supported. During the importing process, these fonts are converted to the available Windows font that best matches the PanelMate™ font.
Variable-Sized Graphic Template	Group of Symbols	-
Variable-Sized Control Button	Pushbutton	-

 **Note:**

Customizations implemented in the Normal font (PanelMate™ dialog Screen fonts) are ignored by the Import Tool.

### Special Tags for Graphic Interface Support

Some auxiliary tags and classes are created to provide support for the dynamics of the screens and graphic elements.

- **Classes**

- cControlButton
  - cControlKeypad
  - cControlTrend

- **Tags**

- PMControlButton[4]
  - PMControlKeypad
  - PMControlTrend
  - PMIsWebClient

 **Caution:**

Do not remove the Classes and Tags mentioned in this chapter. If you do so, the application will not function properly.

## Alarm Configuration

PanelMate™ offers two types of alarms: high-low (HiLo) alarm and conditional expression alarm. Both types are supported by the **Import Tool**.

An auxiliary alarm tag named **[Tag Prefix]ALR[XXXX]** is created for each alarm condition, where **[Tag Prefix]** is the prefix entered in the Wizard dialog, and **[XXXX]** is a sequential number with four digits.

- For hi-lo alarms, the auxiliary alarm tag is created and its hilimit and lolimit properties are set. A math sheet is created to fill this tag with the result of the alarm expression defined in PanelMate™. Two alarm condition entries are created in the alarm worksheet: **Hi** and **Lo**.
- For conditional expression alarms, the auxiliary alarm tag is created, and its hilimit is set to 1. A math sheet is created to fill this tag with the result of the alarm expression defined in PanelMate™. One alarm condition entry is created in the alarm worksheet: **Hi**.

After the application is imported, two new alarm worksheets are created: one for Acknowledgable alarms and the other for Non-Aknowledgable alarms.

 **Note:**

Deadband ranges for HiLo alarms are not imported. You must fill them manually, in the respective alarm worksheet.

## Security System

The current version of *Import Wizard* does not import the security system automatically. After importing the application, you can reconfigure the security system manually, using the Security System editor from EcoStruxure™ Machine SCADA Expert.

## Communication Interface

This release implements the most important communication drivers. However, some communication settings may be different from the original configuration, due to the way that EcoStruxure™ Machine SCADA Expert treats the information. Most of the applications should not be affected by these differences, but in some cases small changes will be required. The next table lists the drivers supported by the *Import Wizard*, along with their limitations.

Protocol	PanelMate™ Plus Driver Name	EcoStruxure™ Machine SCADA Expert Driver Name	Limitations, Restrictions and Remarks
DF1 Serial	Allen-Bradley Serial	ABKE	<ul style="list-style-type: none"> <li>▪ Format fields (specified after the # character in PLC Word References) are ignored.</li> <li>▪ Addresses of only one PLC (the first in the list) are imported.</li> <li>▪ Signed and Unsigned variables will be imported as signed.</li> <li>▪ BCD 4 Data Type is not supported by EcoStruxure™ Machine SCADA Expert (File Type D).</li> </ul>
RIO (Remote I/O)	Allen-Bradley Remote I/O	STRIO	<ul style="list-style-type: none"> <li>▪ In order to communicate using Allen-Bradley Remote I/O, you will have to acquire a specific board for these protocols. Please refer to the <i>EcoStruxure™ Machine SCADA Expert STRIO Driver</i> documentation for more information about the hardware needed.</li> <li>▪ Format fields (specified after the # character in PLC Word References) are ignored.</li> <li>▪ Signed and Unsigned variables will be imported as signed.</li> <li>▪ Double words are not supported.</li> <li>▪ You cannot have PLCs from different families in the same network.</li> <li>▪ PanelMate™ offers four directions for Active Block Transfer: <b>Read</b>, <b>Write</b>, <b>Common</b> and <b>Pass-Through</b>. Only <b>Read</b> and <b>Write</b> are supported by EcoStruxure™ Machine SCADA Expert. The others are converted to <b>Read</b> in the import process.</li> <li>▪ PanelMate™ supports up to 32 racks in its rack table. EcoStruxure™ Machine SCADA Expert supports four racks, one for each channel. Only the four first racks in the table are imported.</li> </ul>
Modbus Serial	Modicon ASCII or Modicon RTU	MODBU	<ul style="list-style-type: none"> <li>▪ Format fields (specified after the # character in PLC Word References) are ignored.</li> <li>▪ Addresses of only one PLC (the first in the list) are imported.</li> <li>▪ Signed and Unsigned variables will be</li> </ul>

Protocol	PanelMate™ Plus Driver Name	EcoStruxure™ Machine SCADA Expert Driver Name	Limitations, Restrictions and Remarks
			imported as signed. <ul style="list-style-type: none"><li>▪ BCD Data Type is not supported.</li><li>▪ Char Array data types are not supported.</li></ul>
Modbus Plus	Modicon Modbus Plus	MODPL	<ul style="list-style-type: none"><li>▪ Format fields (specified after the # character in PLC Word References) are ignored.</li><li>▪ Addresses of only one PLC (the first in the list) are imported.</li><li>▪ Signed and Unsigned variables will be imported as signed.</li><li>▪ Global Data addresses (900xx and G00xx) are not imported.</li></ul>

 **Note:**

Driver configuration can be imported only once into an EcoStruxure™ Machine SCADA Expert application. If you change the communication settings of a PanelMate™ application and try to import it again over a previously imported application, the new settings will not be imported. You have to create a new blank EcoStruxure™ Machine SCADA Expert application and import the modified PanelMate™ application into it.

## Additional Notes

- The **EcoStruxure™ Machine SCADA Expert Import Tool for PanelMate™** is compatible with applications based on the the PanelMate™ Plus Configuration Editor – Version 4.01b0. Applications created with different versions of this software may be incompatible with the *Import Wizard*. This may occur because the way of storing these components in the database may change from one version to another, and the importer may not recognize them as valid components. If possible, try to convert your application to this version of PanelMate™ before importing it.
- **Security:** EcoStruxure™ Machine SCADA Expert offers a security model that is very different from the one supported by PanelMate™. Due to this difference, the PanelMate™ passwords and protection configuration are not imported. After importing the application, you can reconfigure the security system for the application using the EcoStruxure™ Machine SCADA Expert scheme.
- **Alarms:** Alarms are also configured differently in EcoStruxure™ Machine SCADA Expert and PanelMate™. In PanelMate™, the alarm configuration is made inside the graphical interface components, while EcoStruxure™ Machine SCADA Expert offers separate worksheets for alarm definitions, in a more flexible architecture. For more information about alarms, look at the **Alarm Configuration** section in this document.
- **Message Library:** EcoStruxure™ Machine SCADA Expert for PanelMate™ has a message library, where the messages for all the display templates are stored. After the importing process is finished, these messages are copied into the file **Messages.csv**, in the **Symbo1** directory. You can edit this file if you need to change the messages.
- **System Online Labels:** This feature is ignored by the **Import Tool**. The application is imported using the default system labels.