

Wiser 360Degree ZB/IR Convertor

Device User Guide

Information about features and functionality of the device.

03/2022

Legal Information

The Schneider Electric brand and any trademarks of Schneider Electric SE and its subsidiaries referred to in this guide are the property of Schneider Electric SE or its subsidiaries. All other brands may be trademarks of their respective owners.

This guide and its content are protected under applicable copyright laws and furnished for informational use only. No part of this guide may be reproduced or transmitted in any form or by any means (electronic, mechanical, photocopying, recording, or otherwise), for any purpose, without the prior written permission of Schneider Electric.

Schneider Electric does not grant any right or license for commercial use of the guide or its content, except for a non-exclusive and personal license to consult it on an "as is" basis. Schneider Electric products and equipment should be installed, operated, serviced, and maintained only by qualified personnel.

As standards, specifications, and designs change from time to time, information contained in this guide may be subject to change without notice.

To the extent permitted by applicable law, no responsibility or liability is assumed by Schneider Electric and its subsidiaries for any errors or omissions in the informational content of this material or consequences arising out of or resulting from the use of the information contained herein.

Table of Contents

| | |
|---------------------------------------|----|
| Safety information | 5 |
| Wiser 360Degree ZB/IR Converter | 6 |
| For your safety | 6 |
| About the device | 6 |
| Installing the device | 7 |
| Pairing the device | 7 |
| Pairing device manually | 7 |
| Pairing device with auto scan | 9 |
| Configuring the device | 10 |
| Changing the device icon | 10 |
| Renaming the device | 10 |
| Changing the device location | 11 |
| Removing the device | 11 |
| Resetting the device | 12 |
| Using the Device | 12 |
| Adding IR controlled devices | 13 |
| Creating a moment | 17 |
| Creating an automation | 19 |
| Replacing the battery | 23 |
| ZB LED Indication | 24 |
| Troubleshooting | 25 |
| Technical Data | 25 |

Safety information

Important information

Read these instructions carefully and look at the equipment to become familiar with the device before trying to install, operate, service, or maintain it. The following special messages may appear throughout this manual or on the equipment to warn of potential hazards or to call attention to information that clarifies or simplifies a procedure.



The addition of either symbol to a “Danger” or “Warning” safety label indicates that an electrical hazard exists which will result in personal injury if the instructions are not followed.



This is the safety alert symbol. It is used to alert you to potential personal injury hazards. Obey all safety messages that accompany this symbol to avoid possible injury or death.

| |
|--|
| ⚡ ⚠ DANGER |
| DANGER indicates a hazardous situation which, if not avoided, will result in death or serious injury. Failure to follow these instructions will result in death or serious injury. |
| ⚠ WARNING |
| WARNING indicates a hazardous situation which, if not avoided, could result in death or serious injury. |
| ⚠ CAUTION |
| CAUTION indicates a hazardous situation which, if not avoided, could result in minor or moderate injury. |
| NOTICE |
| NOTICE is used to address practices not related to physical injury. |

Wiser 360Degree ZB/IR Convertor



CCT501401

For your safety

NOTICE

RISK OF DAMAGE TO DEVICE

Always operate the product in compliance with the specified technical data.

Failure to follow these instructions can result in equipment damage.

About the device

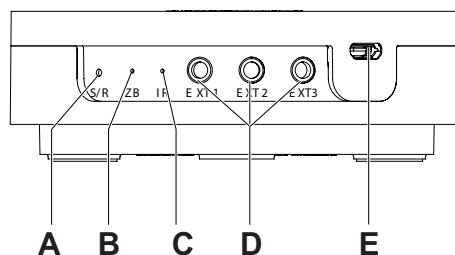
The Wiser IR Converter (or IR Convertor) is a control device to automate your home infrared (IR) controlled devices such as televisions, air conditioners, music systems and so on. The device converts mesh network signal to infrared signal.

Key features

- 360° IR signal coverage
- 3 sockets for IR extension cables
- Supports up to 8 types of IR controlled devices

Operating elements

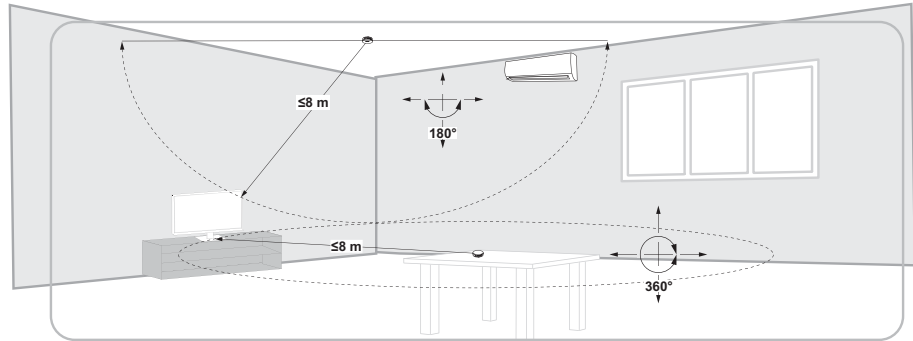
- Set/Reset button
- Network status LED
- IR LED
- 3× 3.5 mm phone jacks for IR extension cables
- Micro USB port for 5 VDC power supply



Suitable install location

IR Convertor can be placed on table or mounted on ceiling to provide desired coverage:

- Placed on a table provides a surrounding 360° IR signal coverage with a maximum control distance of 8 m.
- Ceiling mount provides a surrounding 180° IR signal coverage with a maximum control distance of 8 m.



Installing the device

Refer to the installation instruction supplied with this product.

See Wiser 360Degree ZB/IR Convertor.

Pairing the device

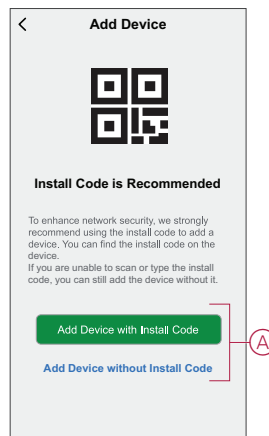
Using the Wiser app, pair your device with the **Wiser Hub** to access and control the device. You can either add the device manually or do an auto-scan to pair it.

Pairing device manually

Follow the steps to pair the device manually:

1. On **Home** page, tap **+**.
2. Tap  and select the required **Wiser Hub** on the slide-up menu.

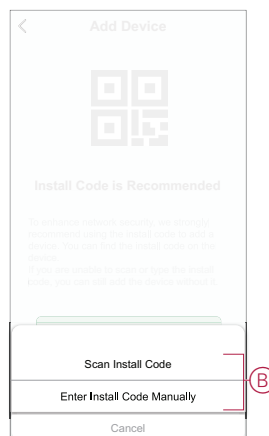
3. Select an option to add the device (A):
 - **Add Device with Install Code**
 - **Add Device without Install Code**



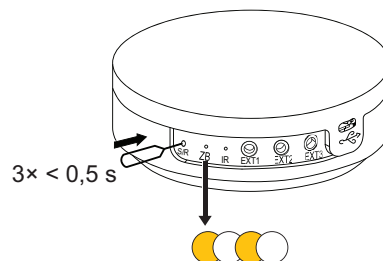
TIP: It is highly recommended to add the device with install code.

4. To pair the device with install code, tap **Add Device with Install Code** to display the slide-up menu. Select any one of the options (B):
 - **Scan Install Code** - you can scan the device for the install code
 - **Enter Install Code Manually** - you can manually enter the install code from the device

After pairing the device with install code, proceed to **Step 6**.

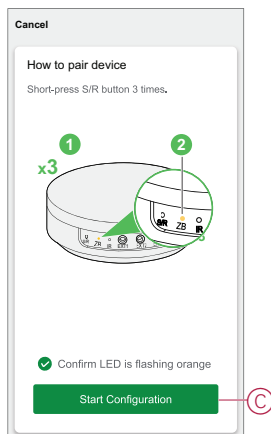


5. To pair the device without install code, tap **Add Device without Install Code**.
6. Short press the S/R button 3 times ($< 0,5$ s).

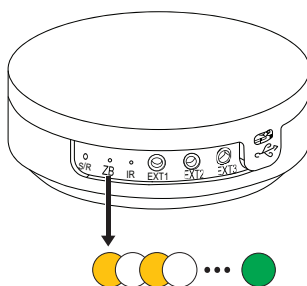


The LED blinks orange.

- In the app, select **Confirm LED is flashing orange** and tap **Start configuration (C)**.



- After a few seconds, a solid green LED indicates that the device is successfully paired to the Gateway/Hub.



- Once the device is added in the app, tap **Done**.

Pairing device with auto scan

Pairing the device with auto scan automatically discovers the device when the corresponding device is powered on.

To pair the device:

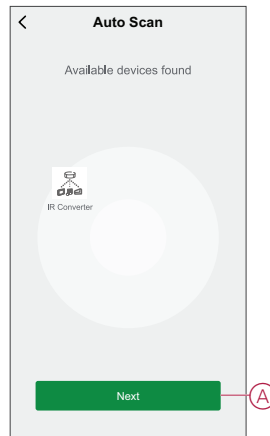
- On the **Home** page, tap **+**.
- Tap **Auto scan** and tap **Confirm**.
- If you have multiple hub, do Step 4 or proceed to Step 5.
- Tap **Select Hub** and select the Wiser Hub from the slide-up menu.
- Short press the push button 3 times (< 0,5 s).

NOTE:

- The LED flashes orange.
- Wait for a few seconds until the device search is complete.

TIP: If you want to pair multiple devices at once, perform step 5 on each device and wait for a few seconds.

6. Tap **Next (A)** and select **IR Convertor**.





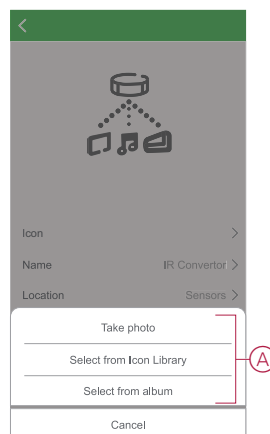
7. Once the device is added successfully, tap **Done**.

Configuring the device

Changing the device icon

Using the Wiser app, you can change the icon of the device. Follow the steps to change the device icon:

1. On the **Home** page, tap **All devices > IR Convertor**.
2. Tap  icon and tap .
3. Tap **Icon** to view the menu.
4. In the slide-up menu, select any one of the following (A):
 - Take photo - Allows you to take a photo from the mobile camera
 - Select from Icon Library - Allows you to select an icon from the app library
 - Select from Album - Allows you to select photo from the mobile gallery





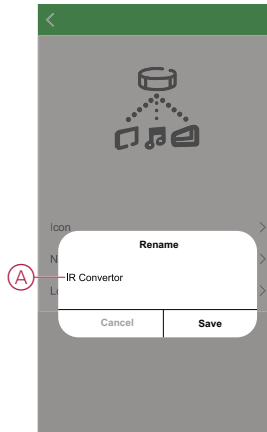
5. Tap on the required photo/icon to change the icon.

Renaming the device

Using the Wiser app, you can rename your device for easy identification.



Follow the steps to rename the device:

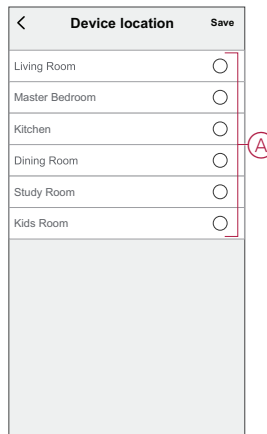
1. On the **Home** page, tap **All devices > IR Converter**.
2. Tap  icon and tap .
3. Tap **Name**, enter the name (A) and tap **Save**.



Changing the device location


Using the Wiser app, you can change the location of the device. Follow the steps to change the device location:

1. On the **Home** page, tap **All devices > IR Converter**.
2. Tap  icon and tap .
3. Tap **Location**, select any location from the list (A) and tap **Save**.

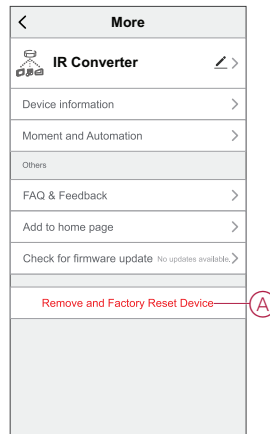


Removing the device

Using the Wiser app, you can remove a device from the device list. To remove the device:

1. On the **Home** page, tap **All devices > IR Converter**.
2. Tap  to display more details.

3. Tap **Remove and Factory Reset Device** (A).



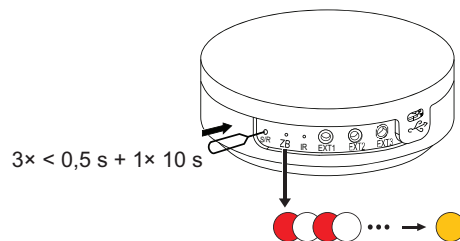
TIP: On the **Home** page, tap and hold the **IR Converter** to remove the device.

NOTE: By removing the device, you will reset the device. If you still have a problem with the reset, then refer to resetting the device, page 12.

Resetting the device

You can reset the device to factory default manually.
To reset the device:

1. Short press the S/R button three times (< 0.5 s) and then long press the push button once (>10 s).
2. After 10 s, LED starts blinking red then release the push button.
3. The device is in reset mode. It is reset to the factory settings after 10 seconds. The device then restarts and the LED stays orange before turning Off.



The LED stops blinking upon successful reset of the device.

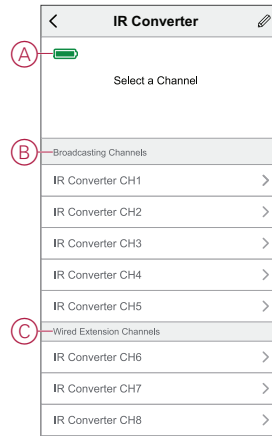
Using the Device

The Control Panel allows you to view the used and unused list of channels.

On the **Home** page, tap **All devices > IR Converter** to access the control panel.

On the IR Converter control panel page, you can see the following:

- Battery level (A)
- Broadcasting channel list (B)
- Wired extension channel list (C)



Adding IR controlled devices

Add infrared-controlled appliances such as televisions, split system air conditioners, and music systems to an IR Converter and control them using the app.

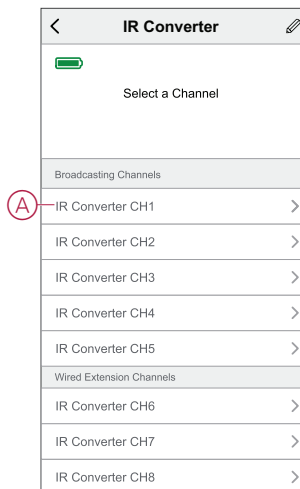
IMPORTANT: If you have a brand-new model of TV, split system air conditioners or HiFi system, the IR code sets may not yet be available in the IR Converter. The code sets in the IR Converter are updated regularly, but there may be times when a new model appliance cannot be used with the device.

NOTE: This task uses the example of adding a television to the IR Converter. The same method can be used to add other infrared-controlled appliances such as split system air conditioners and HiFi systems.

Using IR key codes

If you do not know your television model number, you will need to discover the code set by operating a series of remote commands. To add the device with series commands:

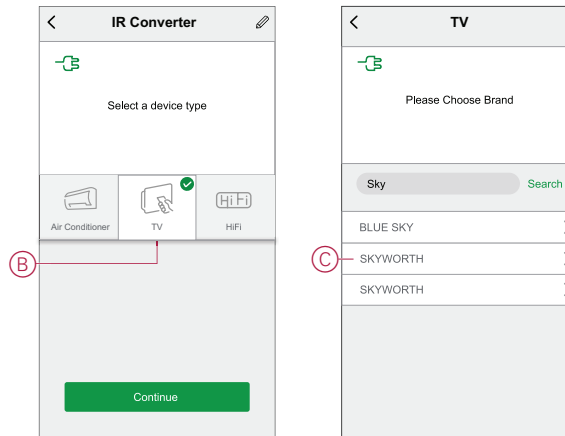
1. On the **Home** page, tap **All devices** > **IR Converter**.
2. Tap on unused channel **IR Converter CH1 (A)**, (Unused channels have no name displayed against them).



NOTE: IR Converter channels CH6 to CH8 are only used with optional IR extension cable.

3. Choose **TV (B)** as the device type then tap **Continue**.

4. Select the television brand (C).

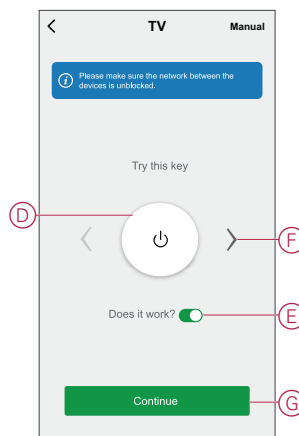
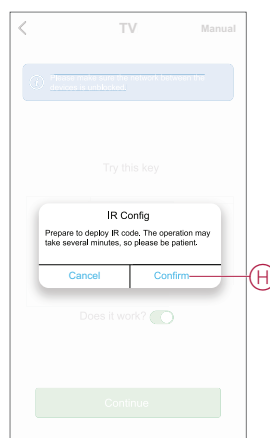


5. Tap on the remote key (D) and check whether the television responds.

NOTE: Confirm that the television is switched on and you can see the screen and network between the devices are unblocked.

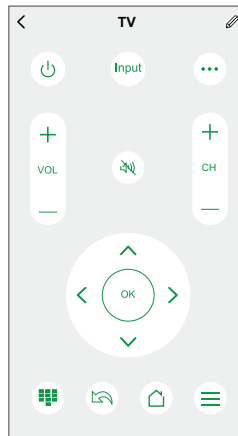
6. If the television shows the possible response tap on **Does it work** toggle switch (E).

7. Tap on › (F) for other remote key and repeat Step 5 and Step 6.

8. Once the correct code set has been recognized, tap **Continue** (G).9. Tap on **Confirm** (H) on **IR Config** pop up.

IR Converter downloads the IR code set and the app displays the progress.

10. Once download of IR code is complete, tap on **Save**.



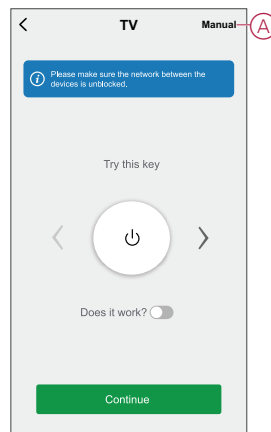
On successful download, the television IR remote will be visible in the Wiser app **Home** page.

Using IR database code number

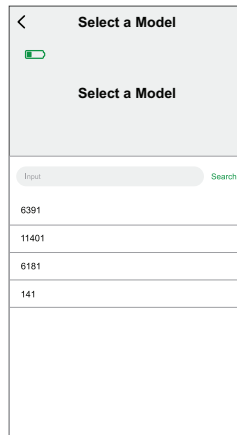
NOTE: Dedicated for authorized Installer ONLY, not applicable for consumer.

If you know the IR database code number of the device, follow the steps to add the device:

1. On the **Home** page, tap **All devices > IR Convertor**.
2. Tap on unused channel **IR Convertor CH2**, (Unused channels have no name displayed against them).
3. Choose **TV** as the device type then tap **Continue** to select the television brand.
4. Tap on **Manual (A)**



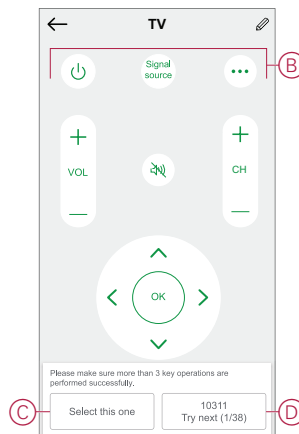
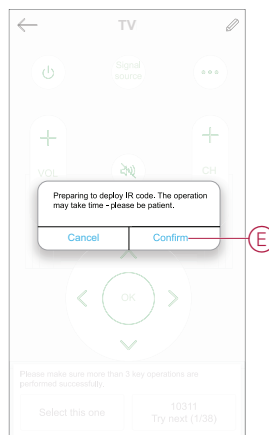
5. Select a model from the list.

6. Tap a button on the remote control display (B) in the app. (For example, the **Vol +**, **⏻** button.)

NOTE: Please verify more than 3 keys operations are successfully confirmed so that IR Converter recognizes the correct code set.

7. If the TV responds as expected, tap **Select this one** (C) and skip step 8 and proceed with step 9.8. If the TV does not respond as expected, tap **Try next** (D) and repeat Steps 6 and 7 using the same button.

NOTE: Number of try next may vary depending on the brand and its model.

9. Tap on **Confirm** (E) on IR Config pop up.


IR Converter downloads the IR code set and the app displays the progress.


On successful download, the television IR remote will be visible in the Wiser app **Home** page.

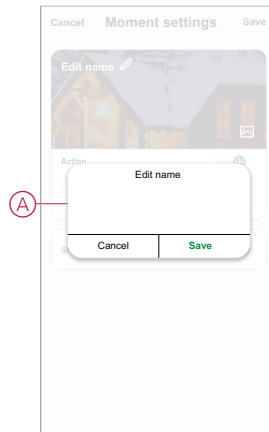
Creating a moment

A Moment allows you to group multiple actions that are usually done together. Using the Wiser app, you can create moments based on your needs (such as movie night).


To create a moment:

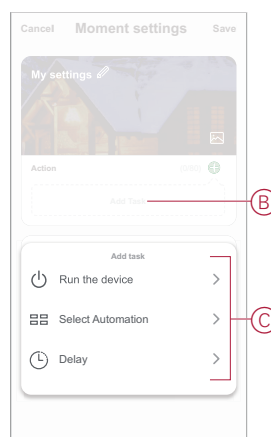
1. On the **Home** page, tap .
2. Go to **Moment** > **+** to create a moment.
3. Tap **Edit name**, enter the name of the moment (A) and tap **Save**.

TIP: You can choose the cover image that represents your moment by tapping .




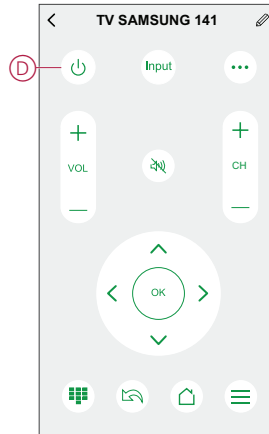
4. In the **Action** section, tap **Add task** (B) to display the slide-up menu.
5. In the **Add task** menu, you can do either or all of the following actions (C):
 - **Run the device** - Select the devices that you want in a moment.
 - **Select Automation** - Select the automation that you want to enable or disable. For more info refer to [Automation](#).
 - **Delay** - Set the delay time.

NOTE: You can add one or more actions using .

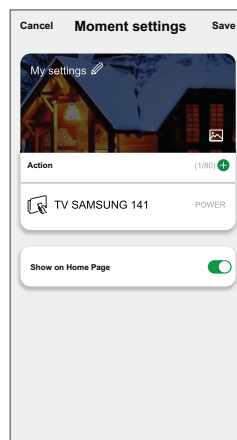


6. Tap **Run the device** and select the IR controlled device remote (Ex. TV SAMSUNG 141).

7. Tap on  (D) to turn on/off the TV.



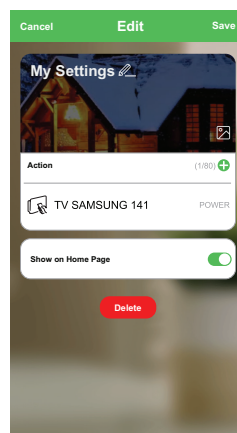
8. Once all the actions are set, tap **Save**.



Editing a moment

Follow the steps to edit a moment:

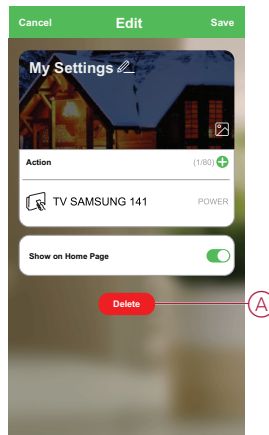
1. On the **Moment** tab, locate the moment you want to edit and tap **•••** icon.
2. On the **Edit** page, you can tap each item (such as dimmer, shutter, relay, etc.) to change the settings and tap **Save**.



Deleting a moment

Follow the steps to delete a moment:


1. On the **Moment** tab, locate the moment that you want to delete and tap ●●● icon.
2. Tap **Delete** (A).




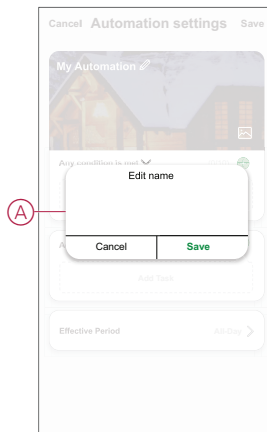
Creating an automation

An automation allows you to group multiple actions that are usually done together, triggered automatically or at scheduled times. By using the Wiser app, you can create automations based on your needs.

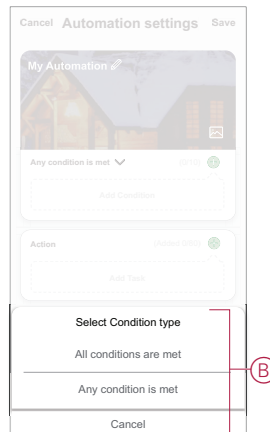
To create an automation:

1. On the **Home** page, tap the .
2. Go to **Automation** > **+** to create an automation.
3. Tap **Edit name**, enter the name of the automation (A) and tap **Save**.


TIP: You can choose the cover image that represents your automation by tapping .

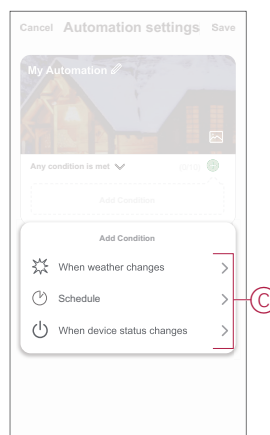


4. Tap **Any condition is met** to select any one of the condition type (B):
- **All conditions are met** - The automation is triggered when all the conditions are met.
 - **Any condition is met** - The automation is triggered when at least one condition is met.




5. Tap **Add Condition** to display the slide-up menu.
6. In the **Add Condition** menu, you can do either or all of the following options (C):
- **When weather changes** - Select the various weather settings.
 - **Schedule** - Set the time and day.
 - **When device status changes** - Select the device and it's function.

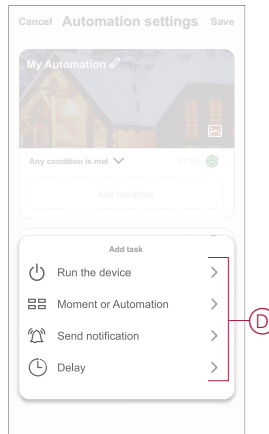
Note: You can add one or more conditions using .



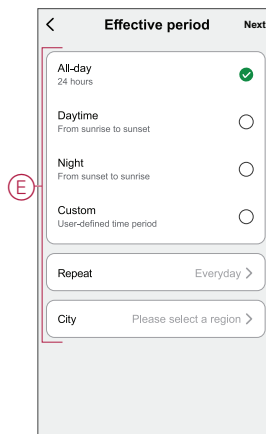
7. Tap **Add task** to open the slide-up menu.

8. In the **Add task** menu, you can do either or all of the following options (D):
- **Run the device** - Select the devices that you want to trigger
 - **Moment or Automation** - Select the moment which you want to trigger or select the automation that you want to enable or disable
 - **Send notification** - Turn On notification for the automation
 - **Delay** - Set the delay time

NOTE: You can add one or more actions using .



9. Tap on **Effective period** to set the time range for the automation. You can select any one of the following (E):
- **All-day** - 24 hours
 - **Daytime** - From sunrise to sunset
 - **Night** - From sunset to sunrise
 - **Custom** - User defined time period




10. Once all the actions and conditions are set, tap **Save**.

Once the automation is saved, it is visible on the **Automation** tab. You can tap the toggle switch on the automation to enable it.

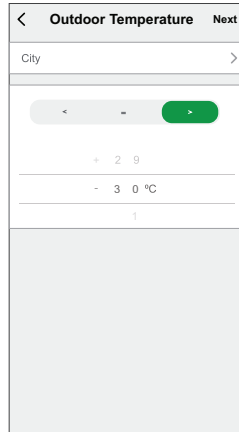
Example of an automation


This demonstration shows you how to create an automation to turn on the AC when there is temperature rise.

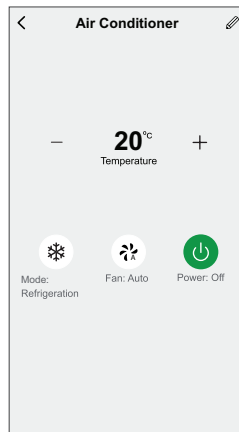
1. Go to **Automation** > **+** to create an automation.
2. Tap **Edit name**, enter the name of the automation and tap **Save**.

TIP: You can choose the cover image that represents your automation by tapping .

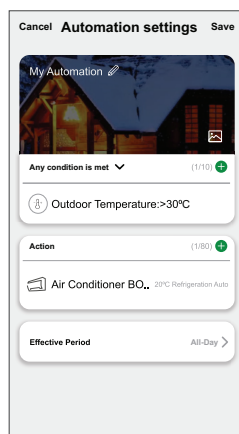
3. Tap **Add Condition > When weather changes > Outdoor Temperature**.
4. Set the required outdoor temperature using the slider.



5. Tap **Add task > Run the device** and select the **Air conditioner** IR controlled device remote.
6. Tap  to turn on the AC and use **-/+** to adjust the required AC temperature and tap.



7. Tap **Next**.
8. In the **Automation Settings** page, tap **Save**.

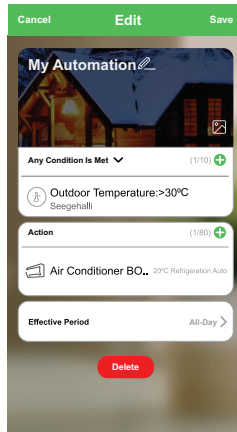


Once the automation is saved, it is visible on the **Automation** tab. You can tap the toggle switch on the automation to enable it.

Editing an automation

Follow the steps to edit an automation:

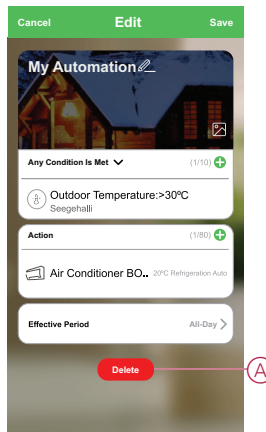
1. On the **Automation** tab, locate the automation you want to edit and tap ●●● icon.
2. On the **Edit** page, you can tap each item (such as dimmer, shutter, relay, etc.) to change the settings and tap **Save**.



Deleting an automation

Follow the steps to delete an automation:

1. On the **Automation** tab, locate the automation you want to delete and tap ●●● icon.
2. Tap **Delete (A)**.



Replacing the battery

Replace the device battery when the level is low or critically low. The battery level can be seen in the app.

To replace the battery from the device:

| |
|---|
| ⚠ WARNING |
| CHEMICAL BURN HAZARD |
| Keep batteries out of reach of children. If swallowed, seek immediate medical attention. |
| Failure to follow these instructions can result in death, serious injury, or equipment damage. |

NOTICE

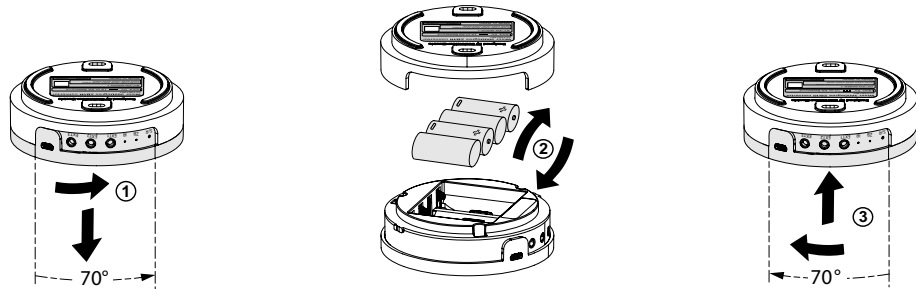
PERFORMANCE DEGRADATION OR EQUIPMENT DAMAGE

- The device should be powered only by the provided AC adaptor or 4× AA batteries.
- Only alkaline batteries should be used. Do not use rechargeable batteries.

Failure to follow these instructions can result in equipment damage.



1. Rotate the module by 70° clockwise to separate the device from the back cover.
2. Replace the batteries with proper polarity.
3. Position the module to the cover and rotate 70° anti-clockwise.

NOTE: Dispose the used batteries, as per statutory regulations.





ZB LED Indication


Pairing

| User Action | LED Indication | Status |
|-------------------------------|--|--|
| Press the push button 3 times | LED blinks orange per second.  | Pairing mode is active for 30 seconds. When pairing is completed, LED glows green for some time before turning Off.  |

Resetting

| User Action | LED Indication | Status |
|---|--|---|
| Press the push button 3 times and hold it down once for > 10 s. | After 10 s, the LED blinks red.  | The device is in reset mode. It is reset to the factory settings after 10 seconds. The device then restarts and the LED stays orange before turning Off.  |

Battery level

| LED Indication | Status |
|---|---|
| LED blinks orange once per minute.  | The battery is low (< 10%), replace the battery, page 23. NOTE: A notification pop-up will appear on the app. |

Troubleshooting

| Symptom | Solution |
|---|---|
| The device is offline. | The battery may be low or drained. Replace the battery in the device. |
| The device is not ready to pair after the device is removed from the app. | Reset to factory default settings, refer to resetting the device, page 12 |

Technical Data

| | |
|---|--|
| AC power adaptor | Model number: KA0601A-0501000DEU |
| | Input: 100-240 VAC, 50/60 Hz |
| | Output: 5.0 VDC, 1.0 A, 5.0 W |
| | Average active efficiency: 73.7% @115 VAC, 230 VAC |
| | No-load power consumption: 0.1 W @115 VAC, 230 VAC |
| Power supply | AC adaptor (included in the package) or |
| | 4× AA Alkaline batteries |
| Connector type | Micro USB port for the AC adaptor |
| | Applicable for 3× 3.5 mm mono mini plug |
| Battery | 4× AA Alkaline batteries |
| Battery life | Up to 1 year (may vary based on the usage, frequency of firmware update and environment) |
| Communication interface | IR emitter energy IEC825 |
| | Zigbee: 2.4 GHz, IEEE802.15.4 |
| Operating frequency | 2405-2480 MHz (Zigbee) |
| Max. radio frequency power transmitted | <10 mW (Zigbee) |
| IR extension cable length | <5 m |
| IR control range with IR extension cable | 1 m (from emitter to the IR controlled device) |
| IR control range without IR extension cable | ≤8 m (from Wiser IR Converter to IR controlled device) |
| IP rating | IP20 |
| Operating temperature | -10 °C to 45 °C, indoor use only |
| Relative humidity | 10% to 90%, non-condensing |
| Dimensions | Ø100.0 × 32.5 mm |
| Certification | CE compliant |

Compliance

Compliance information for Green Premium products

Find and download comprehensive information about Green Premium products, including RoHS compliance and REACH declarations as well as Product Environmental Profile (PEP) and End-of-Life instructions (EOLI).

General information about Green Premium products

Click the link below to read about Schneider Electric's Green Premium product strategy.

<https://www.schneider-electric.com/en/work/support/green-premium/>

Find compliance information for a Green Premium product

Click the link below to search for a product's compliance information (RoHS, REACH, PEP and EOLI).

NOTE: You will need the product reference number or product range to perform the search.

<https://www.reach.schneider-electric.com/CheckProduct.aspx?cskey=ot7n66yt63o1xblflyfj>

Trademarks

This guide makes reference to system and brand names that are trademarks of their relevant owners.

- Zigbee® is a registered trademark of the Connectivity Standards Alliance.
- Apple® and App Store® are brand names or registered trademarks of Apple Inc.
- Google Play™ Store and Android™ are brand names or registered trademarks of Google Inc.
- Wi-Fi® is a registered trademark of Wi-Fi Alliance®.
- Wiser™ is a trademark and the property of Schneider Electric, its subsidiaries and affiliated companies.

Other brands and registered trademarks are the property of their respective owners.

Schneider Electric Asia Pacific Limited
11th Floor, Kerry Centre, 683 Kings Road
Quarry Bay
Hong Kong

www.se.com/contact

As standards, specifications, and design change from time to time,
please ask for confirmation of the information given in this publication.

© 2022 – 2022 Schneider Electric. All rights reserved.

DUG_IR Converter_WASIA-00