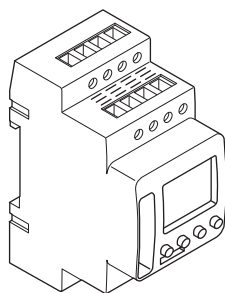


IHP DCF SMART

Product information / menu description



CCT15858

IHP DCF SMART

Getting to know the timer

Displays and operating elements

Operation

Menu structure

Initial setup

Setting a switching time

Modifying a switching time

Deleting a switching time

Extra programs

Setting the holiday function

Setting the PIN

Setting the external input

Activating override and permanent switching

Resetting basic settings

Receiving time signal with antenna

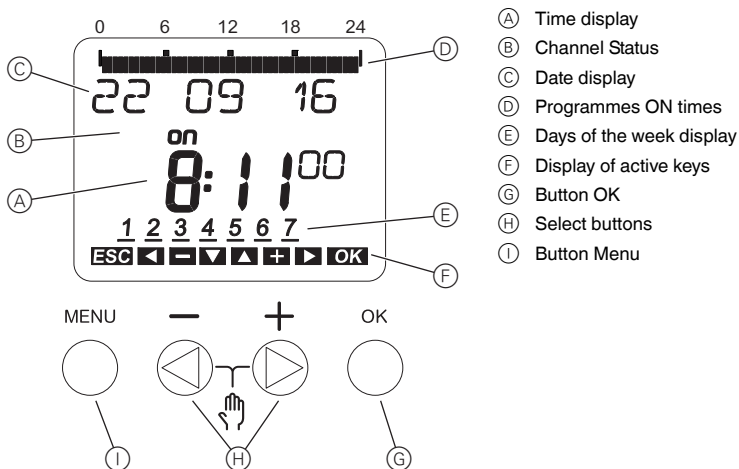
Programming with the memory stick

Schneider Electric Industries SAS

Getting to know the timer

The IHP DCF - SMART with weekly program controls lighting, air conditioning, flushing, etc.
For radio controlled time synchronisation to be completed with a DCF77-antenna (MTN6606-0070).

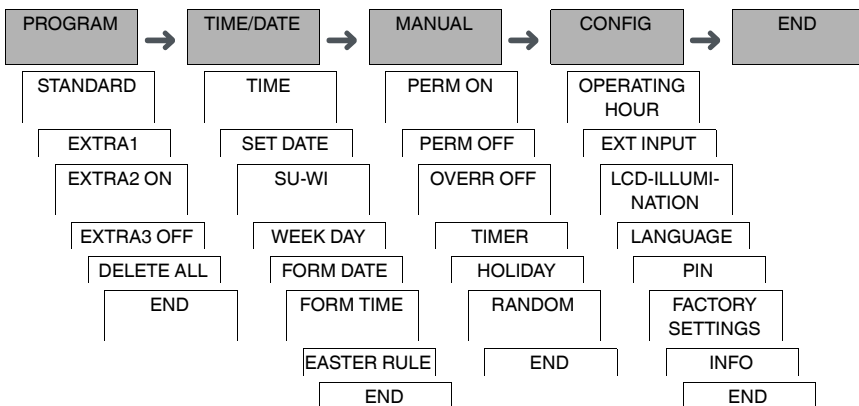
Displays and operating elements



Operation

Button	Function
Button MENU	<ul style="list-style-type: none"> • Opens the menu • In menu mode: one step back • In programming mode: cancel programming mode
Select buttons	<ul style="list-style-type: none"> • Switch between menu items • Increase/decrease value
Button OK	<ul style="list-style-type: none"> • In menu mode: select menu item • In programming mode: confirm setting

Menu structure



Initial setup

The basic settings, such as date, time, etc., must be carried out when starting for the first time or following a reset.

The device starts in the settings menu with the item **LANGUAGE**.

- ① Select the language.
- ② Confirm the message **FORM DATE**.
- ③ Select the date format.
- ④ Set the year.
- ⑤ Set the month.
- ⑥ Set the day.
- ⑦ Confirm the message **FORM TIME**.
- ⑧ Select the time format.
- ⑨ Set the hours.
- ⑩ Set the minute.
- ⑪ Select summer time/winter time.

Setting a switching time

PROGRAM

STANDARD

NEW

A switching time always consists of one time at which the load is switched on and one time at which the load is switched off. You can either set switching times for a specific day of the week or copy them for multiple week days. Copied week days are referred to as a block.

To set a switching time, perform the following steps once for **ON** and once for **OFF**:

- ① Confirm message about free memory slots.
- ② Select **SWITCH**.
- ③ Select **ON** or **OFF**.
- ④ Set the hour.
- ⑤ Set the minute.
- ⑥ Set the day of the week.
- ⑦ If the switching time is only to be valid for one week day, select **SAVE**.
The switching time is set.
- ⑧ If the switching time is to be copied as a block for multiple week days, select **COPY**.
- ⑨ Select further days of the week and confirm in each case.
Week days contained in the block are indicated in the week day display.
To remove a week day from the block, select the week day again using the selection buttons.
- ⑩ Once the desired week days have been set, select **SAVE**.

Setting a pulse

A pulse switches the load on or off for a set duration. You can set a pulse with a maximum length of 59 minutes and 59 seconds.

Setting a pulse:


- ① Confirm message about free memory slots.
- ② Select **PULSE**.
- ③ Select **ON** or **OFF**.
- ④ Set the hour.
- ⑤ Set the minute.
- ⑥ Set the second.
- ⑦ Set the minutes for the pulse length.
- ⑧ Set the seconds for the pulse length.
- ⑨ Set the day of the week.
- ⑩ If the switching time is only to be valid for one week day, select **SAVE**.
The switching time is set.
- ⑪ If the switching time is to be copied as a block for multiple week days, select **COPY**.
- ⑫ Select further days of the week and confirm in each case.
Week days contained in the block are indicated in the week day display.
To remove a week day from the block, select the week day again using the selection buttons.
- ⑬ Once the desired week days have been set, select **SAVE**.


Setting a cycle

A cycle switches the load on (**PULSE LENGTH**) and off (**PAUSE**) recurrently for a defined time. You can set the period of time for the cycle, the pulse length and the pause.

You can select whether a cycle is to apply permanently from the start time or whether a cycle is weekly with a start and end time within the week.

Example: Switch on water rinsing Monday from 8:00 to 20:30 every 15 min for 20 sec (8:00:00 - 8:00:20 On, 8:15:00 - 8:15:20 On, 8:30:00 - 8:30:20 On, etc.)

 The combined PULSE LENGTH and PAUSE must not exceed 17 hours, 59 minutes and 59 seconds.

 The maximum number of switching operations within a cycle cannot be exceeded. Programming ends with the message **ERROR**.

Setting a cycle:

- ① Confirm message about free memory slots.
- ② Select **CYCLE**.
- ③ Confirm **START CYCLE**.
- ④ Set the hour.
- ⑤ Set the minute.
- ⑥ Set the day of the week.
- ⑦ Set the hour for the pulse length.
- ⑧ Set the minutes for the pulse length.
- ⑨ Set the seconds for the pulse length.
- ⑩ Set the hour for the pause.
- ⑪ Set the minutes for the pause.
- ⑫ Set the seconds for the pause.
- ⑬ If the cycle is to be permanent, select **ENDLESS**.
- ⑭ If the cycle is to have a specific end point, select **WITH END**.
- ⑮ Confirm **STOP CYCLE**.
- ⑯ Set the hour.
- ⑰ Set the minute.
- ⑱ Set the day of the week.

Modifying a switching time

PROGRAM

STANDARD

MODIFY

You can change the time for the switching times. In the case of switching times within a block, you can select whether the modification of the time is to apply to the whole block or only to a specific week day. This week day is then removed from the block.

- ① Select **SWITCH**.
- ② Select the switching time.
The display runs through all switching times in sequence. If no switching time is set for a week day, this is indicated in the display by --:--.
If the selected switching time is part of a block, all days of the block are shown in the week day display. The selected week day flashes.
- ③ Set the hour.
- ④ Set the minute.
- ⑤ If the selected switching time is only set for one week day, only the option **SAVE** appears.
- ⑥ If the selected switching time is part of a block, select **MODIFY BLOCK** or **MODIFY WEEK DAY**.
 - **MODIFY BLOCK** changes the time for all switching times of the block.
 - **MODIFY WEEK DAY** changes the time for the selected switching time. The selected switching time is removed from the block.

Deleting a switching time

PROGRAM

STANDARD

DELETE

You can delete switching times at any time. If a switching time is part of a block, you can delete the entire block or remove the switching time from the block. You can also delete all switching times simultaneously.

Deleting a switching time:

- ① Select **SINGLE**.
- ② Select the switching time.
The display runs through all switching times in sequence. If no switching time is set for a week day, this is indicated in the display by --:--.
If the selected switching time is part of a block, all days of the block are shown in the week day display. The selected week day flashes.
- ③ If the selected switching time is only valid for one week day, only the option **DELETE WEEK DAY** appears.
- ④ If the selected switching time is part of a block, select **DELETE BLOCK** or **DELETE WEEK DAY**.
 - **DELETE BLOCK** deletes all switching times of the block.
 - **DELETE WEEK DAY** removes the selected switching time from the block and deletes it.

Deleting all switching times:

- ① Select **DELETE ALL**.
- ② Confirm with **CONFIRM**.

Extra programs

PROGRAM

EXTRA1

EXTRA2 ON

EXTRA3 OFF

You can set switching times independently of the days of the week. During these switching times, other set switching times are inactive.

EXTRA1

You can set two switch-on and switch-off times that are active over a specific date range. The switching times are repeated daily within the date range.

You can specify multiple periods for the switching times.

EXTRA2 ON

You can set a switch-on time.

EXTRA3 OFF

You can set a switch-off time.

Date ranges

If you set an Extra program, different date ranges are available:

- **FIX DATE:** One-off date range with a fixed start and end time or annually recurring date range.
- **BEFORE/AFTER EASTER:** Annually recurring date range whose start and end times are defined relative to Easter Sunday 00:00.



BEFORE/AFTER EASTER setting:

The display starts with 0 days and indicates **START EASTER SUNDAY**. Using the selection buttons, you can reduce this value to **START BEFORE EASTER** or increase it to **START AFTER EASTER**.

Setting the holiday function

MANUAL

HOLIDAY

With the holiday function, you can switch the load on or off completely for a longer period. The programmed switching times do not apply while the holiday function is active. You can only set one holiday time.

- ① Select **ON** or **OFF**.
- ② Confirm **BEGIN HOLIDAY**.
- ③ Set the year.
- ④ Set the month.
- ⑤ Set the day.
- ⑥ Set the hour.
- ⑦ Confirm **END HOLIDAY**.
- ⑧ Set the year.
- ⑨ Set the month.
- ⑩ Set the day.
- ⑪ Set the hour.

Setting the PIN


CONFIG

PIN

A PIN protects against unauthorized use.

If you have forgotten your PIN, contact the Customer Care centre in your country, stating the serial number of your device.

- ① Select **WITH PIN**.
NO PIN cancels the PIN protection function.
- ② Confirm **CURRENT PIN**.
- ③ Set new PIN.

 The PIN digits are set one after the other with +/- and confirmed with **OK**. A digit that has already been set can no longer be changed. When the last digit is confirmed with **OK**, the PIN is saved. If in any doubt, exit the PIN setting procedure with **MENU**.

Setting the external input

CONFIG

EXT INPUT

The device has an external input, you can set whether, and in what manner, it is to respond to an external signal. In the **EXT INPUT** menu, you can set the function that is to be executed. If a function is activated via an external button or switch, **EXTERNAL** appears in the display.

NOT ACTIVE

The external input has no function.

BUTTON

The external input waits for a brief signal and executes a function once.

- **OVERRIDE**
Actuating the external button switches to the override function.
- **TIMER**
The load is switched on or off for a maximum of 23 hours and 59 minutes. Set the duration and the desired function.

SWITCH

The external input switches between two states.

- **PERM ON**
Switches the load on permanently.
- **PERM OFF**
Switches the load off permanently.
- **EXTRA1**
The special program **EXTRA1** is activated.

Activating override and permanent switching

You can set override or permanent switching either via the **MANUAL** menu or using combinations of buttons on the device.

Override switching

If you wish to switch the load briefly to the other switching state (e.g. from **ON** to **OFF**), activate override. This state is only valid until the next switching time.

If override is active, **OVERRI** appears briefly in the display.

Permanent switching

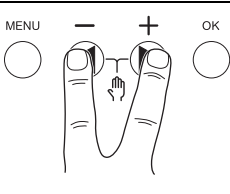
If you wish to switch the load permanently, activate permanent switching. While permanent switching is activated, switching times have no effect.

If you want to select whether the load is to be switched **ON** or **OFF** permanently, use the **MANUAL** menu.

If you use the button combinations to activate permanent switching, the load is switched to the other switching state (e.g. from **ON** to **OFF**).

If permanent switching is active, **PERM** appears briefly in the display.


Button combinations

Buttons	
Activating override	Press buttons simultaneously
Activating permanent switching	Press and hold buttons simultaneously for approx. 2 s
Cancelling override	Press buttons simultaneously
Cancelling permanent switching	Press buttons simultaneously

Resetting basic settings

You can reset the basic settings, such as date and time, etc., and delete or retain all switching times.

You have two options: You can load the factory settings via the **CONFIG** menu or reset the device by pressing specific combinations of buttons on the device.

 Loading the factory settings deletes all switching times. If you reset the basic settings and wish to retain the switching times, use the Reset function.

Loading the factory settings

CONFIG

FACTORY SET-
TINGS

- ① Press **LOAD FACTORY SETTINGS**.
- ② Carry out the basic settings as described in the chapter "Initial setup".

Resetting

- ① Push all four buttons on the device simultaneously.
- ② Select the language.
- ③ If you want to retain the switching times, select **RETAIN PROGRAMS**.
- ④ If you want to delete all switching times, select **DELETE PROGRAMS**.
- ⑤ Set basic settings as described in chapter "Initial setup".

Receiving time signal with antenna

The time of the device can be automatically synchronised by connecting a DCF antenna (MTN6606-0700).

Refer to the manual of the antenna when connecting.

After connecting the power supply or resetting, the display switches to the automatic display. The status of the synchronisation is displayed next to the date display:

- RC:
Receiving the DCF signal.
- Symbol of an antenna:
Antenna is connected, not receiving the DCF signal.
- No symbol:
No connection to antenna.

Adjusting time zones

After successful synchronisation, you can adjust for your time zone in the **TIME/DATE** menu.

Set the correct time by adjusting **HOURL** in the **TIME** menu.

Programming with the memory stick

You can also set switching times, programs and functions with the Kit LTS Software (CCT15860) and transfer them to the device with the Memory stick (CCT15861).

When you plug the Memory stick into the slot, you can call the following menus:

COPY KEY-\$TSWI

Copies the switching times and settings from the Memory stick to the device.

COPY TSWI-\$KEY

Copies the switching times and settings from the device to the Memory stick.

RUN KEY

Activates the switching times set on the Memory stick. The switching times of the device are deactivated. When the memory element is removed, the switching times of the device are reactivated.

CHECK KEY

You can check the settings and programs on the Memory stick

Schneider Electric Industries SAS

If you have technical questions, please contact the Customer Care Centre in your country.

schneider-electric.com/contact