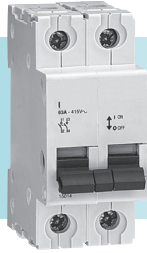


Isobar



MGI1252



Schneider
Electric

Description

125 A 2 pole switch disconnector for use in Schneider Electric single phase + neutral boards.

Safety

The equipment must be installed and maintained by competent personnel in accordance with the appropriate statutory regulations and code of practice e.g. Electricity at Work Regulations, IEE Wiring Regulations (BS7671), etc..

Ensure the source is isolated elsewhere locked off and labelled prior to work being carried out on the board (See reverse for locking methods).

It is the responsibility of the installer to ensure that all electrical connections are tight and satisfactory earth continuity has been achieved.

Following completion of installation these instructions must be left with the equipment/end user.

Installation

- 1 Ensure the switch disconnector is in the off position and that the top and bottom tunnel terminals are fully open.
- 2 Pull back the DIN rail clips and locate the switch disconnector onto the N and L busbar stabs.
- 3 Align the busbar stabs in the centre of the tunnel terminal and then close DIN rail clips, by pushing them upwards until they lock.
- 4 Fully tighten the busbar connection terminals to 3.5 Nm.
- 5 Remove the incoming cable shroud and loosen the incoming cable clamp.
- 6 Prepare the incoming cable ends to expose 15 mm of conductor.
- 7 Pass incoming cables through the clamp inserting the appropriate cable end in to the bottom switch disconnector terminals.
- 8 Ensure that the correct polarity has been maintained i.e. neutral on the left, phase on the right.
- 9 Tighten the cable terminal screws to 3.5 Nm. Tighten the incoming cable clamp and refit the shroud.

General specification

Conforms to	BSEN 60947-3	
Current carrying capacity	125 A	
Switching duty	AC22	
Cable capacity	Single core	1 - 50 mm
	Multi core (using ferrules)	1 - 35 mm

Locking



Locking device part number **MGLA** is available for use on switch disconnecter incomers.

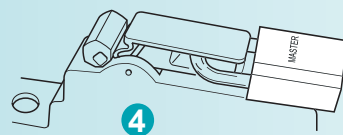
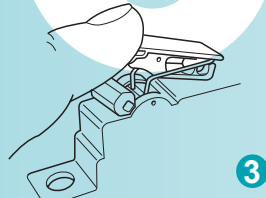
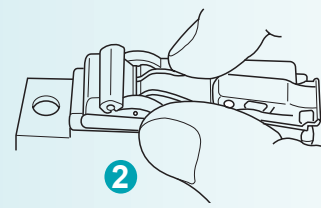
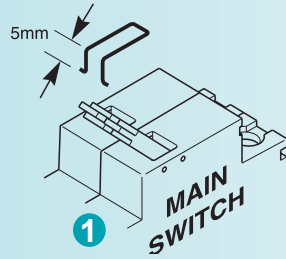
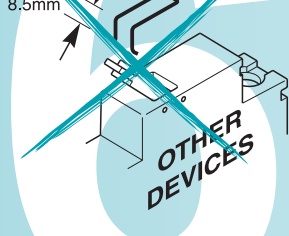
This device allows locking in the off position so the switch may not be closed inadvertently or unintentionally.

The padlock **MGLAP** enables the locking device to be secured in position.

Fitting the locking device Part No. MGLA

Select 5 mm wire spring

8.5mm



Health & Safety at Work, etc Act 1974

To ensure that the equipment described is safe for both personnel and property it should be installed, commissioned and maintained by or under the supervision of qualified persons.

Regard should be taken of IEE Wiring Regulations, Codes of Practice, Statutory requirements and any specific instructions issued by Schneider Electric.

Any operating or installation queries relating to these products should be communicated directly with Schneider Electric.

Schneider Electric Industries SAS
Fordhouse Road,
Wolverhampton WV10 9EO
Tel. (01952) 290029 Fax. (01952) 290534

This product must be installed, connected and used in compliance with prevailing standards and/or installation regulations.
As standards, specifications and designs develop from time to time, always ask for confirmation of the information given in this publication.

BBV1501601_00 - 11/2008

Réalisation : SEDOC 04 76 18 04 11