

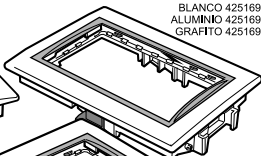
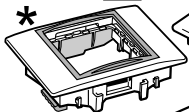
**COJUNTOS PORTAMECANISMOS PARA
CANALES CAM**
**SET MECHANISM HOLDER SET FOR
CAM TRUNKING.**

**CALIDAD EN EL PRODUCTO
CALIDAD EN EL SERVICIO**
**QUALITY IN OUR PRODUCTS
QUALITY IN OUR SERVICE**

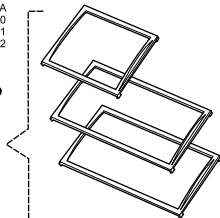


aemsa

módulo 45x45
CAM CP
BLANCO 4251640
ALUMINIO 4251641
GRAFITO 4251642



módulo doble AMERICANO
CAM CPA
BLANCO 4251690
ALUMINIO 4251691
GRAFITO 4251692

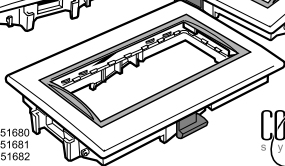


otros colores disponibles

others available colors:

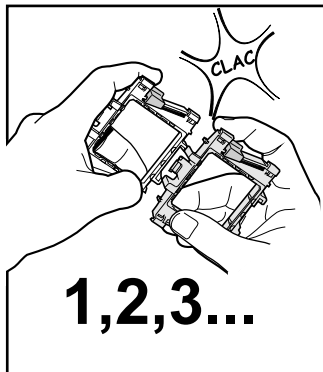
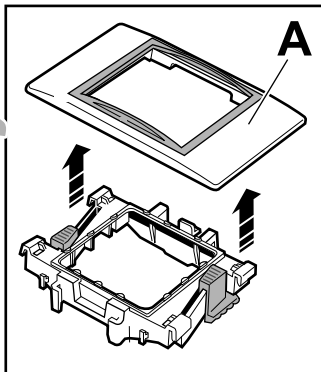
Blanco (white), Aluminio (aluminium),
Grafito (graphite), Azul (blue), Rojo (red),
Verde (green), Amarillo (yellow).

módulo doble
CAM CPD
BLANCO 4251680
ALUMINIO 4251681
GRAFITO 4251682

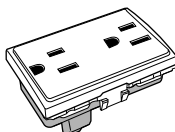
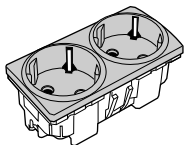
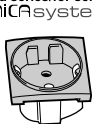


CONNECT
system

Instrucciones Técnicas de Montaje
Technical assembly instructions

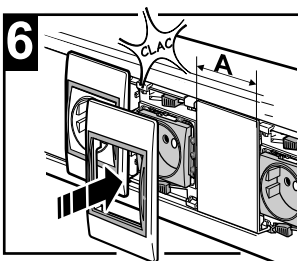
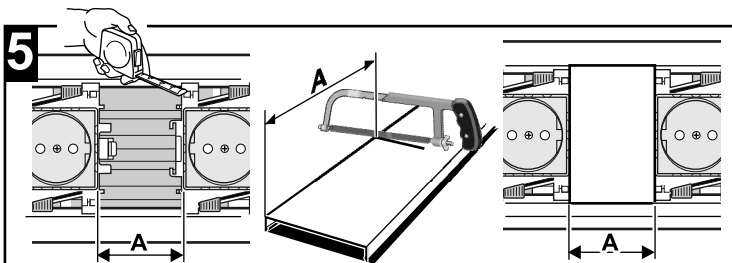
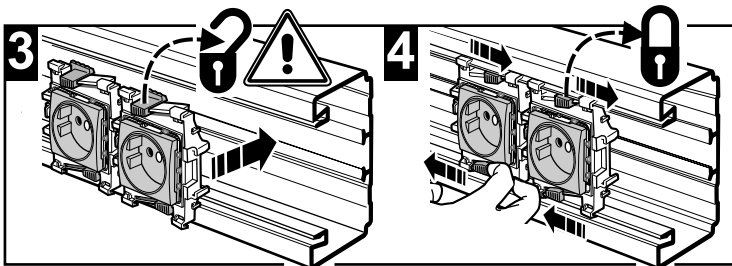
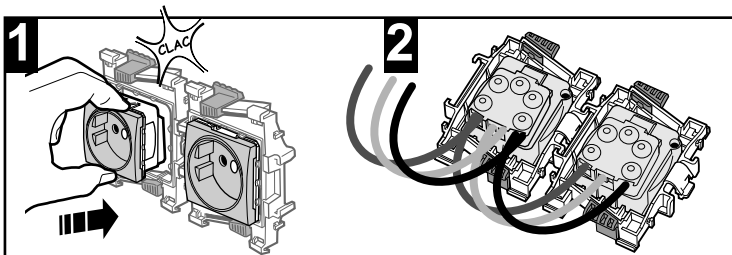


Para series/for series
UNICAsystem



Una empresa de
Schneider
Electric

Azagador de la Torre, 75 - Pol. Ind. Horno de Alcedo - 46026 VALENCIA (España)
Tel. (34) 96 376 47 05 - Fax (34) 96 376 54 90
e-mail: aemsa@aemsa.es - www.aemsa.es



TABIQUE SEPARADOR METÁLICO

TCV.CAM
(COD. 4295113)

OPCIONAL

