

Fuses replacement in cable compartment

! WARNING

This operation must be performed with the HV cables de-energized.

! CAUTION

All logging operation will be carried out according to specific rules of the system concerned. Responsible for the work must ensure that there is no tension in the cable compartment.

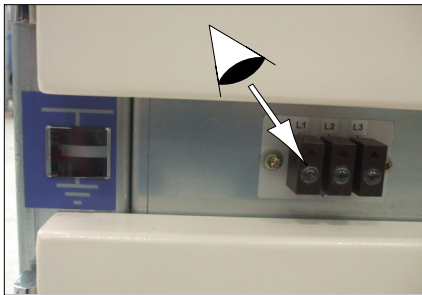
! CAUTION

The body of a fuse can become very hot following a short circuit. Take standard precautions (clean leather gloves) before starting work.

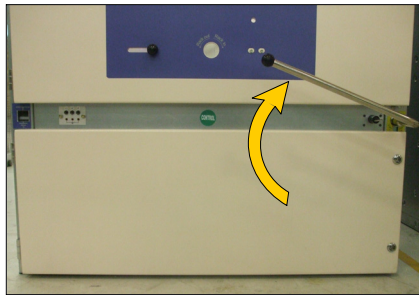
! CAUTION

For an apparently single phase fault, it is **imperative** that all 3 fuses be replaced.

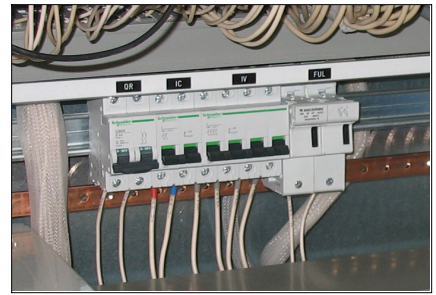
1 Opening of cable compartment



- Open the circuit breaker.
- Ensure the absence of voltage in the cable compartment.

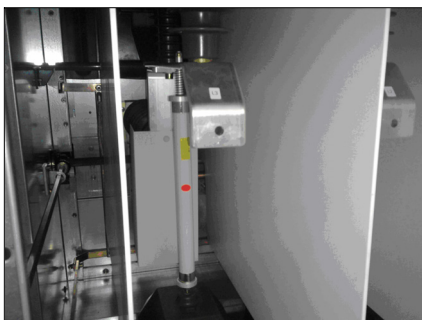


- Unplug the circuit breaker.
- Closed the earthing switch.



- In the LV box, open the LV circuit breaker of the VT.

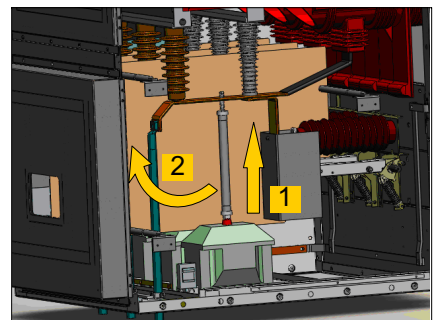
2 Replacement of fuses



- Open the rear door access cables.



- Check the absence of voltage on each phases using a voltage detection stick.



- Take the fuse with gloves.
- 1. Lift the fuse by compressing the spring.
- 2. Pull out the fuse on the support to remove it.
- Replace the fuse.
- Now fit the other two fuses.

3 Processing old fuses and packaging

Fuses and packaging must be disposed of via General Industrial Waste channels.

Schneider Electric Energy France
35, rue Joseph Monier
CS 30323
F - 92506 Rueil-Malmaison Cedex

RCS Nanterre 511 746 356
Capital social 6 909 620 €
www.schneider-electric.com

As standards, specifications and designs change from time to time, please ask for confirmation of the information given in this publication.

Design: Schneider Electric
Photos: Schneider Electric