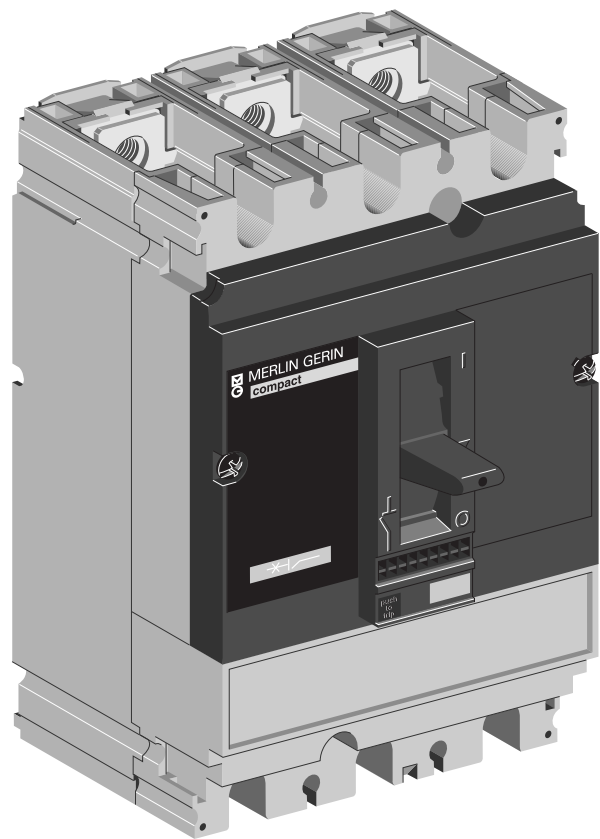


Compact NB250-NS250E

disjoncteur
circuit breaker



Le fournisseur recevra 2 films:

- 1 pour le noir
- 1 pour la couleur.

Pour chaque modification ce document de gestion technique sera obligatoirement accompagné du ou des films concernés.

Qualité du papier:

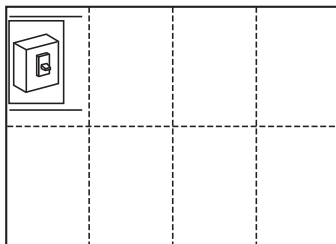
90 grammes couché moderne, semi-mat 2 faces.

Impression OFFSET:

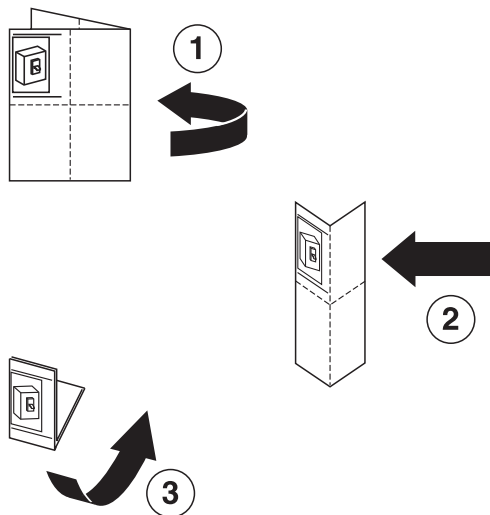
caractères et traits, noir. couleur d'accompagnement,

orange Pantone 151.

FORMAT ouvert: 300 x 420

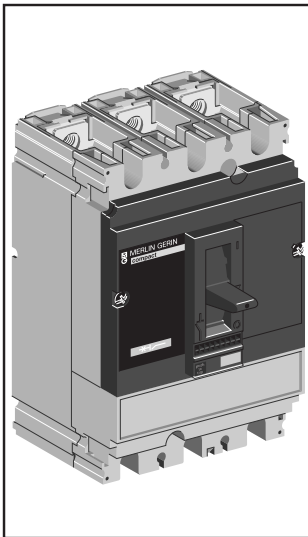


FORMAT plié: 150 x 105



G	01-05-99	Modifié intitulé NB225N devient NB250-NS250E	CHAMPIER		RANEA			
F	30-04-98	Modifié intitulé NS225E devient NB225N	CHAMPIER		RANEA			
E	15-04-97	Modifié couples de serrage borne	CHAMPIER		RANEA			
A	01-05-99	Création	CHAMPIER		RANEA			
Ind. Index	Date Date	Modification/Modification	Nom Name	Visa Signature	Nom Name	Visa Signature	Archivage Micro-filmed	
			Préparé par/Drawn by		Vérifié par/Checked by			
Echelle Scale	0,65		Appareil/Device or equipment		MERLIN GERIN			
Unité/Issued by	PACT		NB250-NS250E					
Code de diffusion Distribution code			Ensemble/Assembly		A			
			Disjoncteur		998627A			
Code de diffusion Distribution code			Pièce/Part		1 / 3			
			NOTICE PRODUIT					

998 627AA



**Compact
NB250-NS250E**

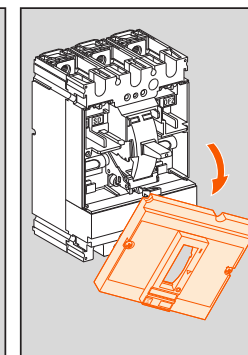
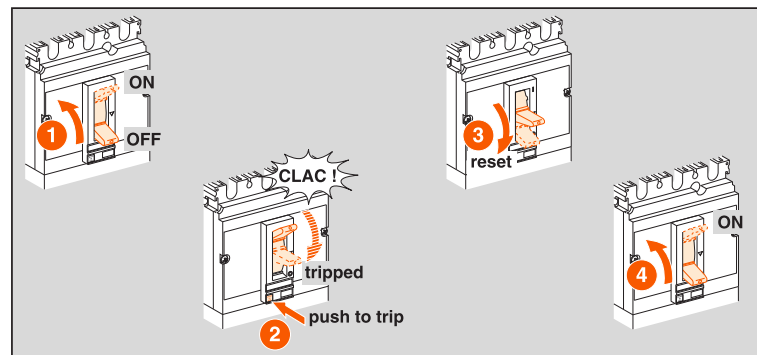
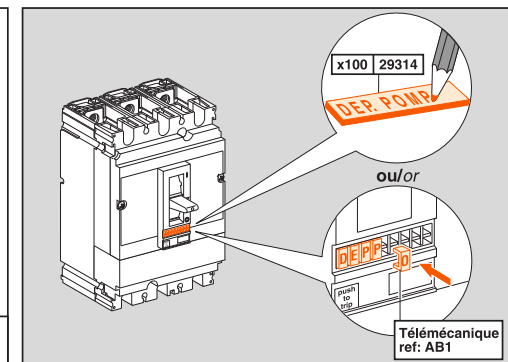
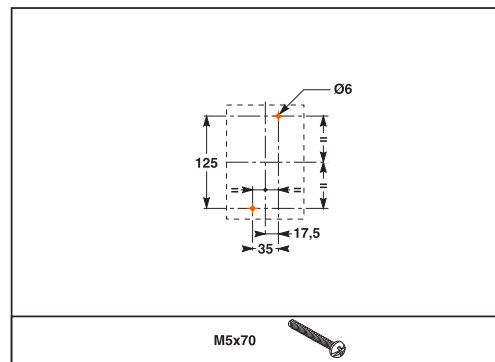
**disjoncteur
circuit breaker**

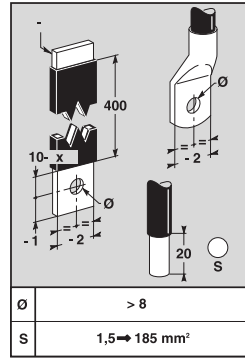
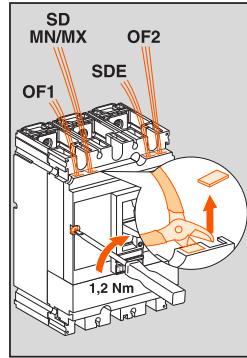
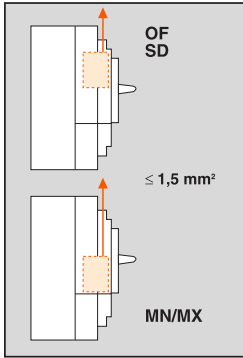
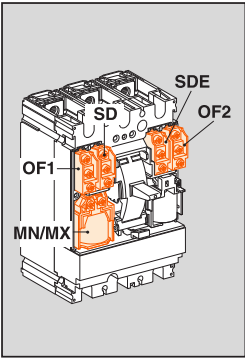
Le montage de ces matériels ne peut être effectué que par des professionnels. Le non respect des indications de la présente notice ne saurait engager la responsabilité du constructeur.

The equipment shall be assembled only by qualified personnel. The manufacturer assumes no responsibility for damages resulting from the non-application or incorrect application of the instructions provided herein.

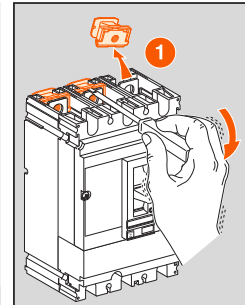
MERLIN GERIN
la maîtrise de l'énergie électrique

6 (M8 x 20)	
2 (M5 x 70)	
 4 5 6	 pozidriv n°1, 2, 3 ou plat / slotted screwdriver

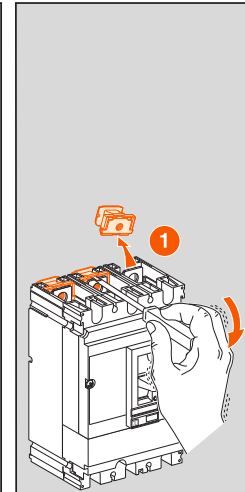
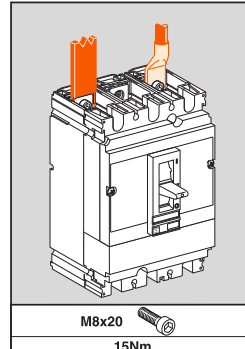
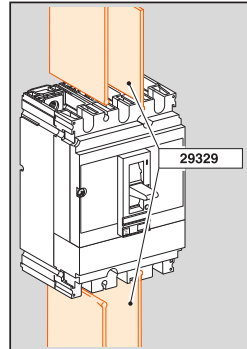
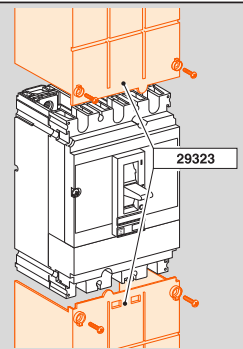
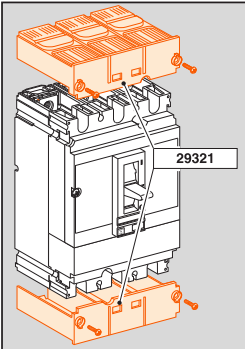
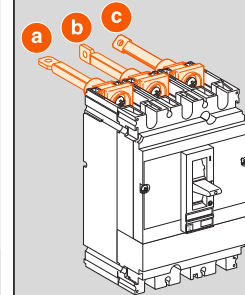
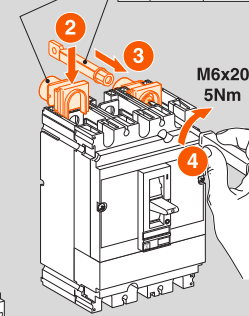




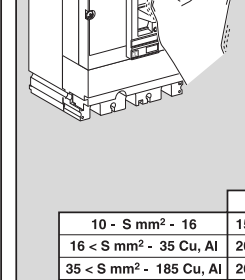
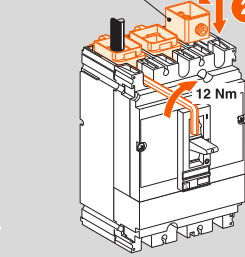
\varnothing	> 8
S	1,5 → 185 mm ²



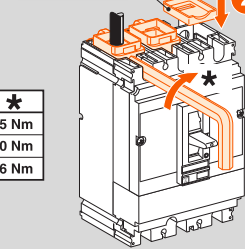
x2 + x4	29239
x4 + x4	29240
x2	29236
x2	29235
x6	29237
x8	29238



1 -	
x2	29246
x3	29242
x4	29243



x2	29247
x3	29259
x4	29260



10 - S mm ² - 16	15 Nm
16 < S mm ² - 35 Cu, Al	20 Nm
35 < S mm ² - 185 Cu, Al	26 Nm