

Commissioning a Com'X 200/Com'X 210/Com'X 510

This guide provides an overview of the commissioning process for a new Com'X and is intended for qualified individuals who have experience setting up the Com'X.

These guidelines can help reduce commissioning time by eliminating unnecessary reboots and adding device configuration at the optimal time:

1. Upgrade firmware
2. Configure Com'X network settings
3. Add and configure devices
4. Configure and start data logging and publication

For detailed installation and operating instructions, including safety messaging, read the Com'X instruction sheet and user manuals. The user manual is available on the Com'X 510 in **Settings > Links > View Links**.

Additional Resources

Document	References
Com'X 200/Com'X 210/Com'X 510 Instruction Sheet	5406AD002 5406AD005 5406AD006 5406AD007
Com'X 510 User Manual	DOCA0098EN DOCA0098FR DOCA0098ES DOCA0098DE DOCA0098PT DOCA0098IT DOCA0098ZH DOCA0098RU

Schneider Electric is a trademark or registered trademark of Schneider Electric in France, the USA and other countries. Other trademarks are the property of their respective owners.

Electrical equipment should be installed, operated, serviced, and maintained only by qualified personnel. No responsibility is assumed by Schneider Electric for any consequence arising out of the use of this manual.

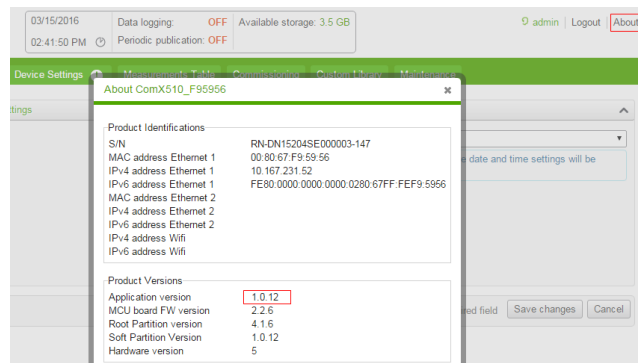
© 2017 Schneider Electric. All rights reserved.

Document	References
Com'X 200/Com'X 210 User Manual	DOCA0036EN DOCA0036FR DOCA0036ES DOCA0036DE DOCA0036PT DOCA0036IT DOCA0036ZH DOCA0036RU
EBXA-GPRS/EBXA-GPRS-SIM Instruction Sheet	253537613
EBXA-WIFI Instruction Sheet	253537634
Zigbee Instruction Sheet	NHA2243500

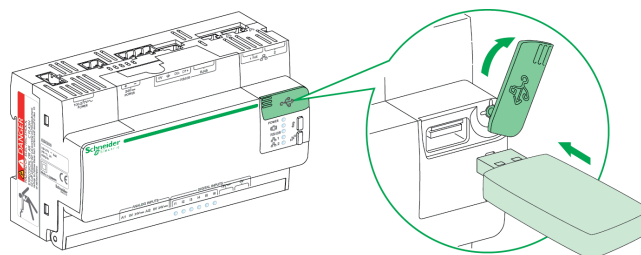
1. Upgrade Com'X Firmware

We recommend that you upgrade to the latest firmware version for optimal performance and feature set. You can check available firmware versions and download new firmware from the Com'X [range page](#) at www.schneider-electric.com.

1. Connect any required accessories: Wi-Fi, GPRS, 3G, or ZigBee (optional).
2. Turn on the device and log in to the Com'X. See *Logging In for the First Time* in the User Manual.
3. Check the firmware version by clicking **About** in the banner.
 - If the **Application version** (firmware) is the latest version, skip to [2. Configure Com'X Network Settings on page 5](#).
 - If the firmware is not the latest version, continue with step 4.

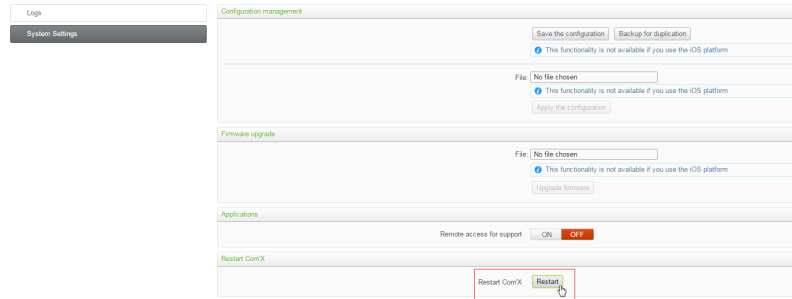


4. Change the date to today's date in **Settings > General Settings > Date/Time Settings**. See *Date and Time Settings* in the User Manual.
5. Plug in the USB device loaded with new firmware (`upgrade.sp1`). The firmware upgrade begins when you restart the Com'X, below. See *Upgrading Firmware via the USB Port* in the User Manual. See the required upgrade path for each model, below.



6. Configure the network settings in **Settings > General Settings > Network Settings**. See *Selecting a Network Configuration* in the User Manual.
7. Reboot the Com'X.
 - If the change to network settings triggers an automatic reboot (see [Reboot Cases on page 5](#)), the firmware upgrade begins when you confirm your changes.

- If not, manually restart the Com'X in **Maintenance > System Settings > Restart Com'X**. (See *Restarting the from the Web Interface* in the User Manual).



Continue to [3. Add and Configure Devices on page 6](#) .

Com'X 510 Firmware Upgrade Path

Installed Version	New Version			
	1.1.x	2.1.x	3.0.7	3.5.24 or higher
1.0.12	Yes	Yes	Yes	No ⁽¹⁾
1.1.x	—	Yes	Yes	No ⁽¹⁾
2.1.x	—	—	Yes	Yes
3.0.7	—	—	—	Yes

⁽¹⁾You must install 2.1.x before moving to this version.

Com'X 200/Com'X 210 Firmware Upgrade Path

NOTE: Versions 3.5.24 and higher are not available for the Com'X 200.

Installed Version	New Version						
	1.1.20	1.3.x	1.4.x	2.0.x	2.1.18	2.2.1	3.5.24 or higher
1.0.14	Yes	No ⁽¹⁾	No ⁽¹⁾	No ⁽¹⁾	No ⁽¹⁾	No ⁽¹⁾	No ⁽²⁾
1.1.20	—	Yes	Yes	Yes	Yes	Yes	No ⁽¹⁾
1.3.x	—	—	Yes	Yes	Yes	Yes	No ⁽¹⁾
1.4.x	—	—	—	Yes	Yes	Yes	No ⁽¹⁾
2.0.x	—	—	—	—	Yes	Yes	Yes
2.1.18	—	—	—	—	—	Yes	Yes
2.2.1	—	—	—	—	—	—	Yes

⁽¹⁾ You must install 1.1.20 (*.tgz) before upgrading to version 1.3.x or higher.

⁽²⁾ You must install 1.1.20 (*.tgz) then 2.2.1 before upgrading to a higher version.

2. Configure Com'X Network Settings

1. Log in to the Com'X.
2. Configure the network settings in **Settings > General Settings > Network Settings** if you did not do so during the firmware upgrade step. See *Selecting a Network Configuration* in the User Manual.

See the table below to understand if your network configuration will cause an automatic reboot.

Reboot Cases

This table describes the cases when changing the configuration causes an automatic reboot.

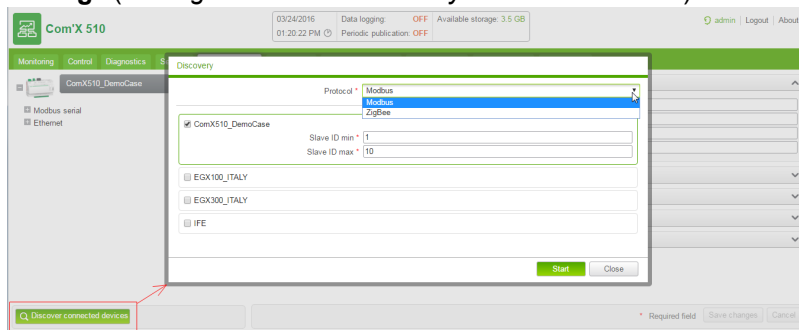
Initial Network Configuration	New Network Configuration
2 separate ports	<ul style="list-style-type: none"> • 2 switched ports • GPRS/3G and 2 switched ports • Wi-Fi and 2 switched ports
GPRS/3G only	<ul style="list-style-type: none"> • 2 switched ports • GPRS/3G and 2 switched ports • Wi-Fi and 2 switched ports
Wi-Fi only	<ul style="list-style-type: none"> • 2 switched ports • GPRS/3G and 2 switched ports • Wi-Fi and 2 switched ports
2 switched ports	<ul style="list-style-type: none"> • 2 separate ports • GPRS/3G only • Wi-Fi only
GPRS/3G and 2 switched ports	<ul style="list-style-type: none"> • 2 separate ports • GPRS/3G only • Wi-Fi only
Wi-Fi and 2 switched ports	<ul style="list-style-type: none"> • 2 separate ports • GPRS/3G only • Wi-Fi only

3. Add and Configure Devices

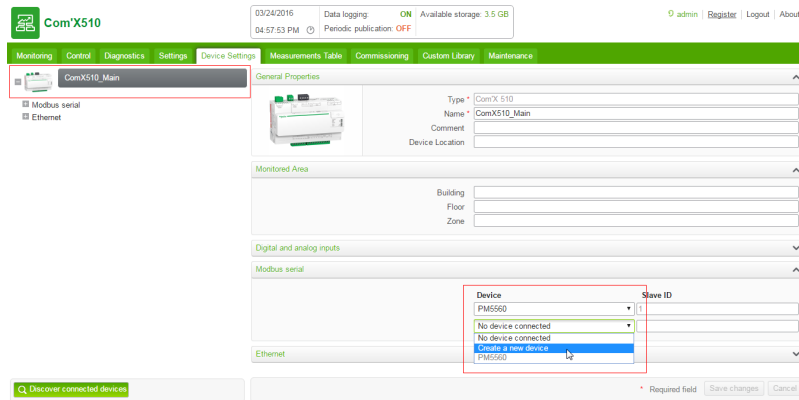
1. Configure the serial port in **Settings > Communication > Modbus Serial**. Adjust baud rate, parity, and number of stop bits according to the connected serial devices.

NOTE: The Com'X cannot discover a device unless these settings match the device's settings.

2. Add devices in the **Device Settings** tab:
 - Automatically: Click **Discover connected devices** to find Modbus devices (See *Discovering Connected Devices* in the User Manual). You can also discover ZigBee devices after setting up a ZigBee network in **Settings > Communication > ZigBee Settings** (see *ZigBee Device Discovery* in the User Manual).



- Manually: In the device tree view, click the upstream device to which the downstream device is connected. For example, select the Com'X to connect a device to the Com'X. See *Adding a Downstream Device* in the User Manual.



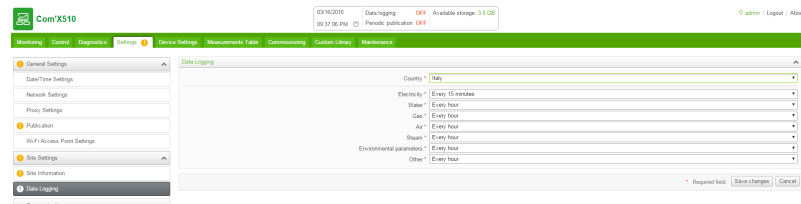
3. Under the **Measurement Table** for each device, update the topics to log and publish. See *Selecting Measurements to Log or Publish* in the User Manual.

NOTE: For optimal performance, only select necessary topics. Energy topics are selected by default.

4. Configure and Start Data Logging and Publication

1. Optional: If you are using the Com'X as a passthrough gateway, ensure that Modbus TCP/IP port 502 on Ethernet 1 is enabled in **Settings > Security > Firewall Management**. See *Firewall Management* in the User Manual.
2. Set up data logging intervals in **Settings > Site Settings > Data Logging**. See *Defining the Logging Intervals* in the User Manual.

NOTE: For optimal performance, select a logging interval of five minutes or greater.



3. Set up the publication platform in **Settings > General Settings > Publication**. See *Selecting Platform and Publication Frequency* in the User Manual.
4. Start data logging and publication in the **Commissioning** tab. This page also displays any missing configuration parameters. See *Starting the Publication* in the User Manual.

Verify that logging and publication are **ON** in the banner. You can also verify that logging and publication are started in **Maintenance > Logs**.

You can check that each device returns relevant values in the **Measurements Table** tab.