

DL to SE Conversion: Installation Instructions (SMSDL2SE)

Retain for future use.

INTRODUCTION

Use these installation instructions to upgrade your System Manager DL software to System Manager Standard. This package includes the *SMSDL2SE* upgrade CD, as well as the entire System Manager Standard CD set. For this installation, you will only use the *SMSDL2SE* CD.

INSTALLATION INSTRUCTIONS

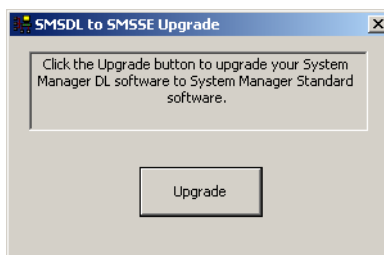
Follow these steps to install the DL to Standard Conversion on an existing System Manager DL computer:

1. Shut down SMS and all Windows programs.
2. Insert the disk named *SMSDL2SE* in the System Manager DL computer's CD-ROM drive.

If you have disabled your computer's autorun feature, you will need to launch the installation manually. To do this, click Start > Run, then browse to locate the CD named *SMSDL_SMSSE*.

Double-click *setup.exe*. At the run screen, click *OK*.

The *SMSDL to SMSSE Upgrade* screen displays:



3. Click Upgrade.
4. When the upgrade is finished (the *Upgrade Complete* screen displays), click *OK*.
5. Restart the computer to cause the upgrade to take effect.

FOR FUTURE USE

Once the conversion is complete, discard your System Manager DL CD set, and replace it with the System Manager Standard CD set. You will use the System Manager Standard CDs for any future system maintenance.

Square D / Schneider Electric
295 Tech Park Dr, Suite 100
Laverne, TN 37086 USA
1-888-SquareD (1-888-778-2733)
www.SquareD.com
www.PowerLogic.com

Electrical equipment should be installed, operated, serviced, and maintained only by qualified personnel. No responsibility is assumed by Schneider Electric for any consequences arising out of the use of this material.

© 2004 Schneider Electric All Rights Reserved