

WebXTR Installation Instructions (WebXTR)

Retain for future use.

INTRODUCTION

By default, System Manager DL and System Manager Standard allow only one browser connection at a time. WebXTR, an optional add-on product, provides an additional five simultaneous connections.

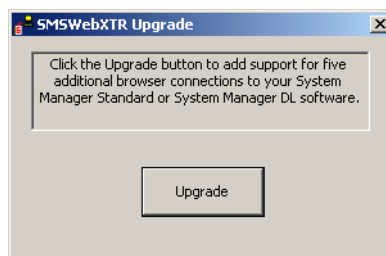
WEBXTR INSTALLATION

Follow these steps to install WebXTR on the SMS computer:

1. Shut down SMS and all Windows programs.
2. Insert the disk named *WebXTR* in the computer's CD-ROM drive.
If you have disabled your computer's autorun feature, you will need to launch the installation manually. To do this, click Start > Run, then browse to locate the CD named *WEBXTR*.

Double-click *setup.exe*. At the run screen, click *OK*.

The *SMSWebXTR Upgrade* screen displays:



3. Click *Upgrade*.
4. When the upgrade is finished, and the *Upgrade Complete* screen displays, click *OK*.
5. If prompted, restart the computer to cause the upgrade to take effect.

Square D / Schneider Electric
295 Tech Park Dr, Suite 100
Laverne, TN 37086 USA
1-888-SquareD (1-888-778-2733)
www.SquareD.com
www.PowerLogic.com

Electrical equipment should be installed, operated, serviced, and maintained only by qualified personnel. No responsibility is assumed by Schneider Electric for any consequences arising out of the use of this material.

© 2004 Schneider Electric All Rights Reserved