

# Sepam 1000+ series 20

( re. 59606 & 59607 )

## Front panel replacement instructions

( n° 51247192EN )

Merlin Gerin

Modicon

Square D

Telemecanique

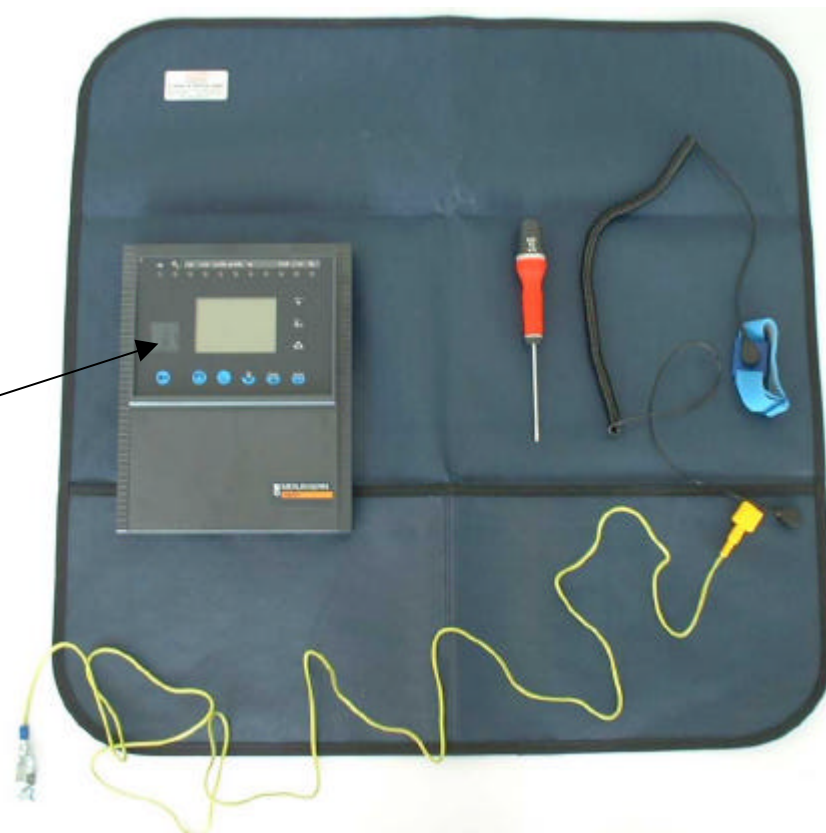


# Preparation

## ■ Equipment required:

Arrange the tools supplied on a table:

- Static-dissipative work surface
- ground cord assembly
- alligator clip
- adjustable wrist band
- Torx T10 screw driver
- After-Sales Spare part  
« Kit DSM SAV »  
n° 51247190FA-A0



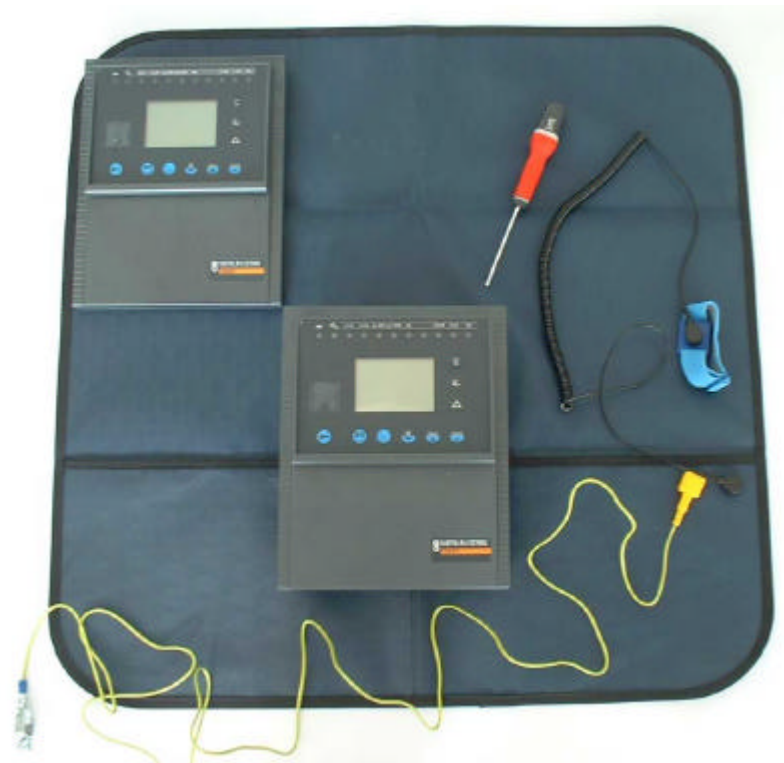
# Preparation

## ■ Remove the Sepam from the cubicle:

- loosen and unplug all connectors and cords as well as the CCA630, CCA670 or CCT640 interfaces connected to the rear panel of the base unit

## Set the Sepam base unit on the mat:

- it is not necessary to remove the MES module, but removing it makes it easier to carry out the operation since it improves stability on the table
- Record the Sepam serial number on the manufacturer label (on right side panel)
- Put on the antistatic bracelet



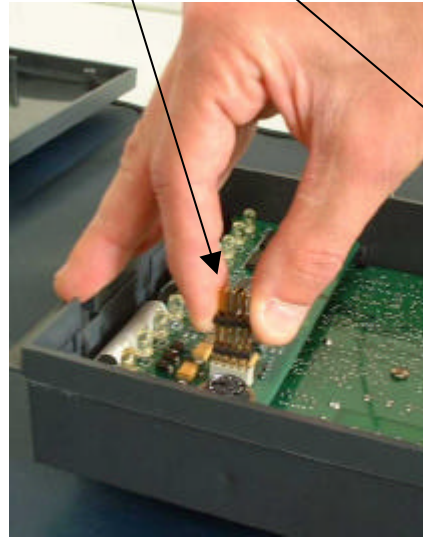
# Remove the front panel

- ➤ loosen and remove the 2 screws on the top panel
- turn the Sepam over and loosen and remove the 2 bottom screws
- turn the Sepam over again



## Remove the front panel (cont'd)

- ➤ remove the front panel,
  - remove the connecting strip connector (do not reuse)



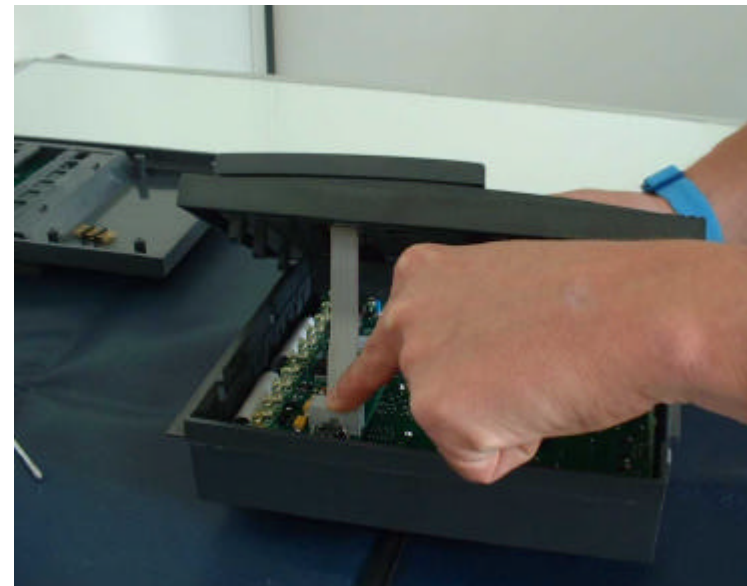
# Mount the spare kit

- ➤ record the spare DSM serial number on the label (\*)
- position the front panel as shown in figure 2
- Insert the flat cable connector into the base unit connector

Figure 1



Figure 2



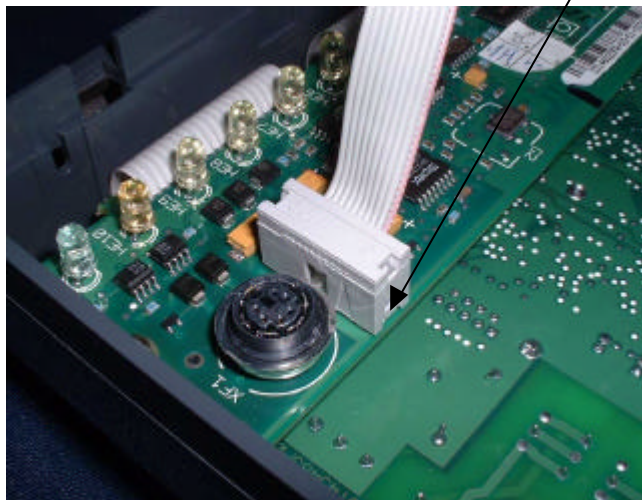
(\*example 51246028FA+B0+V01491048

# Check the connections

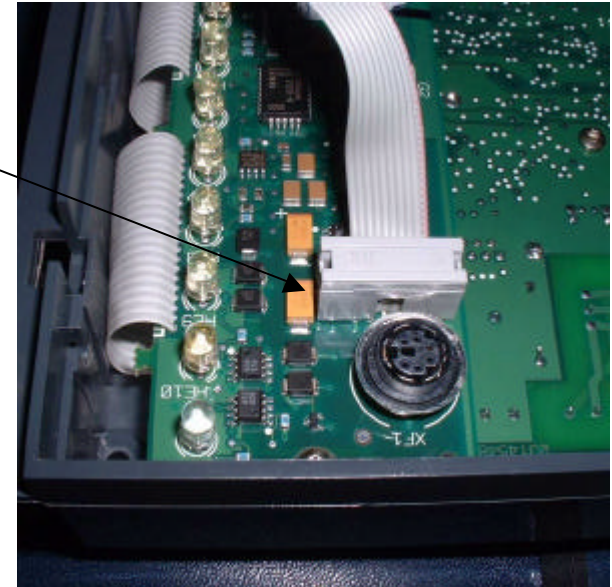


Connector shifted upwards,  
pressing on a component

Connector shifted downwards,  
aligned with the edge of the PCB



Connector  
inserted alongside  
the component





# Put together and test

## ■ Putting together:

- set down and center the front panel on the Sepam case
- tighten the 4 mounting screws, after having carried out the operations opposite to those given in the removal instructions

## ■ Testing at the end of the operation:

- connect a CCA630 (or CCT640 according to model) interface to Sepam
- remount its MES module, if it was removed
- connect the power supply and switch on the Sepam
- After the display has correctly initialized:
  - do a «lamp test» by pressing the button  for 5 sec
  - press the  Button twice and check the «About Sepam» screen, UMI **V0146**

## ■ In the event of faults:

- Remove the front panel again and check that the connector is correctly plugged in
- In the event of incorrect mounting (see previous slide), change the front panel again since it will have been damaged...