

fr en es it de pt

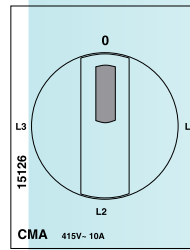
CMA : 15126  
CMB : 15120  
CMC : 15123

CMD : 15121  
CME : 15122  
CMV : 15125

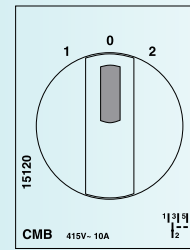


**Schneider**  
Electric

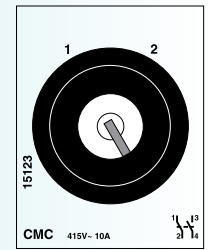
Découvrez / New features / Descubra / Scoprite / Beschreibung / Descubra



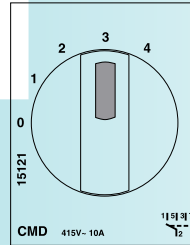
CMA : 15126



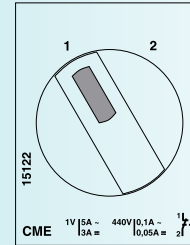
CMB : 15120



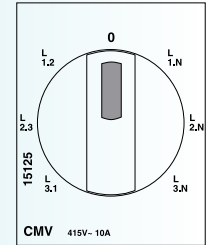
CMC : 15123



CMD : 15121

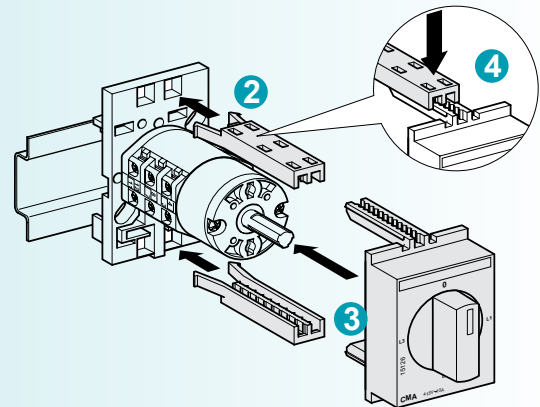
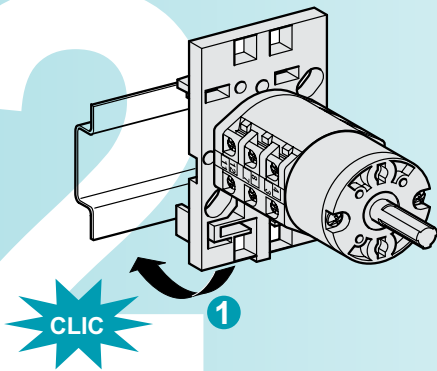


CME : 15122



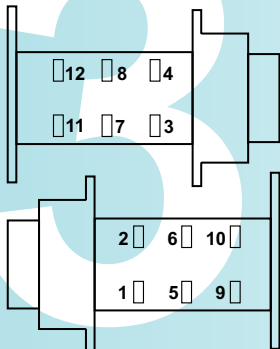
CMV : 15125

Installez / Installation / Instale / Installate / Montage / Instale

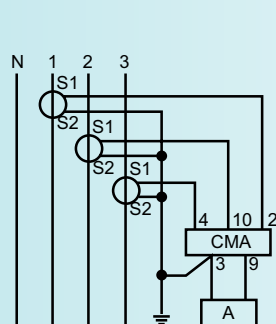


Câblez / Cable / Haga las conexiones / Cablate / Verdringung / Faça a ligação

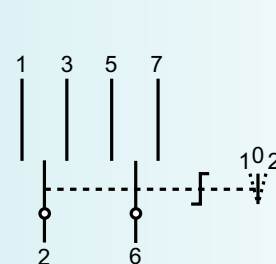
CMB - CMC - CMD - CME



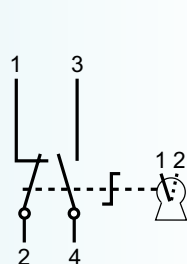
CMA



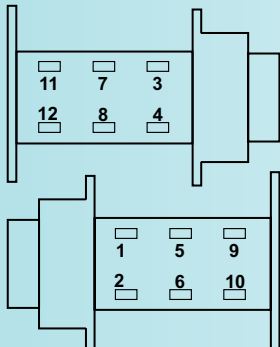
CMB



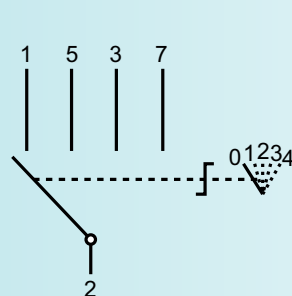
CMC



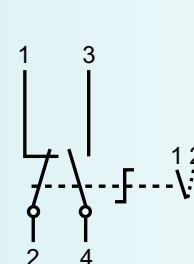
CMA - CMV



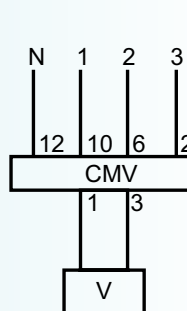
CMD



CME



CMV



**fr** Caractéristiques communes

- commande rotative
- tension max. utilisation : 440 V 50/60 Hz
- courant nominal thermique : 10 A
- température de fonctionnement : -20 °C ... +55 °C
- température de stockage : -25 °C ... +80 °C
- endurance électrique (AC21A-3x440 V) : 200 000 manœuvres
- endurance mécanique : 1 000 000 manœuvres
- raccordement : bornes à cavaliers avec vis imperdable, pour câble jusqu' à 1,5 mm<sup>2</sup>
- conforme aux normes :
  - CEI 60947-3 (EN 60947-3)
  - VDE 0660 part. 107
  - UL.



**Caractéristiques particulières CME**  
gamme-tension 1 V-440 V

**Capacité de coupure**

CA	CC
charge résistive avec faibles surcharges	charge résistive T ≤ 1 ms
1 V/5 A	1 V/3 A
12 V/1,2 A	12 V/0,7 A
24 V/0,7 A	24 V/0,4 A
48 V/0,45 A	48 V/0,25 A
110 V/0,25 A	110 V/0,13 A
240 V/0,15 A	240 V/0,08 A
300 V/0,13 A	300 V/0,07 A
440 V/0,1 A	440 V/0,05 A

**en** Common technical data

- rotary handle
- maximum operating voltage: 440 V 50/60 Hz
- nominal thermal current: 10 A
- operating temperature: -20°C ... +55°C
- storage temperature: -25°C ... +80°C
- electrical durability (AC21A-3x440 V): 200 000 switching operations
- mechanical durability: 1 000 000 switching operations
- connection: jumper terminals with captive screw, for cable up to 1.5 mm<sup>2</sup>
- complies with standards:
  - IEC 60947-3 (EN 60947-3)
  - VDE 0660 part. 107
  - UL.



**CME specific technical data**  
voltage range 1 V-440 V

**Breaking capacity**

AC	DC
resistive load with small overloads	resistive load T ≤ 1 ms
1 V/5 A	1 V/3 A
12 V/1,2 A	12 V/0,7 A
24 V/0,7 A	24 V/0,4 A
48 V/0,45 A	48 V/0,25 A
110 V/0,25 A	110 V/0,13 A
240 V/0,15 A	240 V/0,08 A
300 V/0,13 A	300 V/0,07 A
440 V/0,1 A	440 V/0,05 A

**es** Características comunes

- mando rotativo
- tensión máxima de utilización: 440 V 50/60 Hz
- corriente nominal térmica: 10 A
- temperatura de funcionamiento: -20°C ... +55°C
- temperatura de almacenamiento: -25°C ... +80°C
- resistencia a esfuerzos eléctricos (AC21A-3x440 V): 200 000 maniobras
- resistencia a la fatiga: 1 000 000 switching operations
- conexión: bornes con caballetes y tornillo imperdible para cable de hasta 1,5 mm<sup>2</sup>
- conforme a las normas:
  - CEI 60947-3 (EN 60947-3)
  - VDE 0660 part. 107
  - UL.



**Características particulares CME**  
gama tensión 1 V-440 V

**Capacidad de corte**

CA	CC
carga resistiva con bajas sobrecargas	carga resistiva T ≤ 1 ms
1 V/5 A	1 V/3 A
12 V/1,2 A	12 V/0,7 A
24 V/0,7 A	24 V/0,4 A
48 V/0,45 A	48 V/0,25 A
110 V/0,25 A	110 V/0,13 A
240 V/0,15 A	240 V/0,08 A
300 V/0,13 A	300 V/0,07 A
440 V/0,1 A	440 V/0,05 A

**it** Caratteristiche comuni

- comando rotativo
- tensione max. utilizzo: 440 V 50/60 Hz
- corrente nominale termica: 10 A
- temperatura di funzionamento: da -20 °C a +55 °C
- temperatura di stoccaggio: da -25 °C a +80 °C
- resistenza elettrica (AC21A-3x440 V): 200 000 manovre
- resistenza meccanica: 1.000.000 di manovre
- allacciamento: morsetti a ponticelli con vite antismarrimento, per cavo fino a 1,5 mm<sup>2</sup>
- conforme alle norme:
  - CEI 60947-3 (EN 60947-3)
  - VDE 0660 part. 107
  - UL.



**Caratteristiche particolari CME**  
Gamma-tensione 1 V-440 V

**Capacità d'interruzione**

CA	CC
carica resistiva con deboli sovraccarichi	carica resistiva T ≤ 1 ms
1 V/5 A	1 V/3 A
12 V/1,2 A	12 V/0,7 A
24 V/0,7 A	24 V/0,4 A
48 V/0,45 A	48 V/0,25 A
110 V/0,25 A	110 V/0,13 A
240 V/0,15 A	240 V/0,08 A
300 V/0,13 A	300 V/0,07 A
440 V/0,1 A	440 V/0,05 A

**de** Gemeinsame technische Daten

- Drehschalter
- Max. Betriebsspannung: 440 V 50/60 Hz
- thermoelektrischer Nennstrom: 10 A
- Betriebstemperatur: -20°C ... +55°C
- Lagertemperatur: -25°C ... +80°C
- elektrische Haltbarkeit (AC21A-3x440 V): 200 000 Schaltbedienungen
- mechanische Haltbarkeit: 1 000 000 Schaltbedienungen
- Anschluss : Reiterklemmen mit unverlierbarer Schraube, für Kabel bis zu 1,5 mm<sup>2</sup>
- gemäß den Normen:
  - CEI 60947-3 (EN 60947-3)
  - VDE 0660 Teil 107
  - UL.



**Besondere technische Daten CME**  
Spannungsbereich 1 V-440 V

**Abschaltungs-kapazität**

AC	DC
Ohmsche Belastung mit geringer Überlastung	Ohmsche Belastung T ≤ 1 ms
1 V/5 A	1 V/3 A
12 V/1,2 A	12 V/0,7 A
24 V/0,7 A	24 V/0,4 A
48 V/0,45 A	48 V/0,25 A
110 V/0,25 A	110 V/0,13 A
240 V/0,15 A	240 V/0,08 A
300 V/0,13 A	300 V/0,07 A
440 V/0,1 A	440 V/0,05 A

**pt** Características comuns

- comando rotativo
- tensão máx. utilização: 440 V 50/60 Hz
- corrente nominal térmica: 10 A
- temperatura de funcionamento: -20°C ... +55°C
- temperatura de armazenamento: -25°C ... +80°C
- resistência eléctrica (AC21A-3x440 V): 200 000 manobras
- resistência mecânica: 1 000 000 de manobras
- ligação: terminais de cavaletes com parafuso imperdível, para cabos até 1,5 mm<sup>2</sup>
- conformidade com as normas:
  - CEI 60947-3 (EN 60947-3)
  - VDE 0660 part. 107
  - UL.



**Características particulares CME**  
gama tensão 1 V-440 V

**Capacidade de corte**

CA	CC
carga resistiva com sobrecargas fracas	carga resistiva T ≤ 1 ms
1 V/5 A	1 V/3 A
12 V/1,2 A	12 V/0,7 A
24 V/0,7 A	24 V/0,4 A
48 V/0,45 A	48 V/0,25 A
110 V/0,25 A	110 V/0,13 A
240 V/0,15 A	240 V/0,08 A
300 V/0,13 A	300 V/0,07 A
440 V/0,1 A	440 V/0,05 A