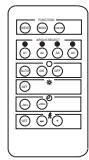


## Remote control for radio ARGUS 220 CONNECT

Operating instructions



Art. no. MTN5052-1100

### Necessary accessories

- Radio ARGUS 220 CONNECT (Art. no. MTN5052-3119)

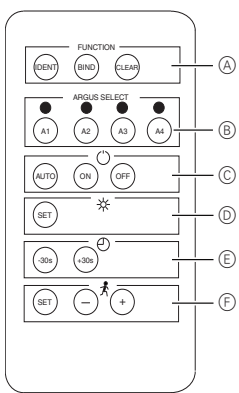
### Remote control introduction

This remote control is intended only for use with the radio ARGUS 220 CONNECT.

You can use the remote control to set the following functions on the ARGUS:

- Operating mode (permanent ON, permanent OFF, automatic mode)
- Brightness duration
- Limit duration
- Movement sensitivity

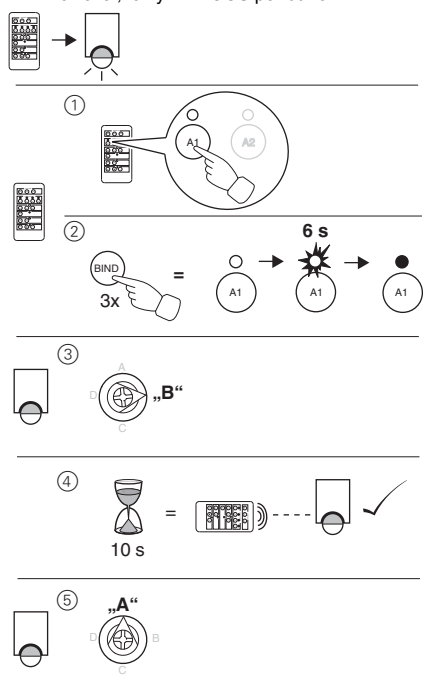
### Connections, displays and operating elements



- (A) Options: Function
- (B) Options: ARGUS 1 - 4
- (C) Options: Operating mode
- (D) Setting: Brightness
- (E) Setting: Limit duration
- (F) Setting: Sensitivity

### Teaching the ARGUS for use with remote control

**i** A maximum of 4 ARGUS devices can be taught on the remote control. However, only 1 ARGUS per button.



**i** The remote control has the status "Primary" as soon as the first ARGUS has been taught.

Repeat steps 1-5 for each additional ARGUS to be taught on the remote control.

**i** Switch actuators (one per key) can also be taught on the remote control.

### Setting up the ARGUS via remote control

**i** You can use the remote control to adjust the ARGUS simply and conveniently.

#### Setting the operating mode

Use the buttons to select one of the following statuses:

- 1 Press the [ON] button: The local ARGUS is permanently switched on (permanent ON).
- 2 Press the [OFF] button: The ARGUS is permanently switched off (permanent OFF).
- 3 Press the [AUTO] button: If the ARGUS is already on, the overshoot time is started. Otherwise, the ARGUS remains off until a movement is detected.

#### Setting the brightness threshold

- 1 Press the [SET] button for 1.2 s: the current brightness value is adopted.

#### Setting the switching duration

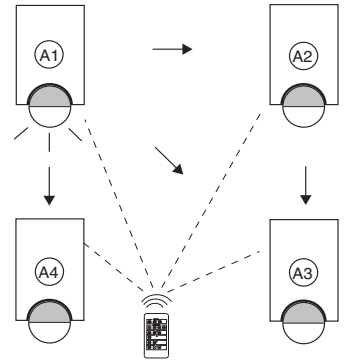
- 1 Press the [+30] or the [-30] button: the current overshoot time is reduced or increased by 30 s per push of the button.

#### Setting the sensitivity

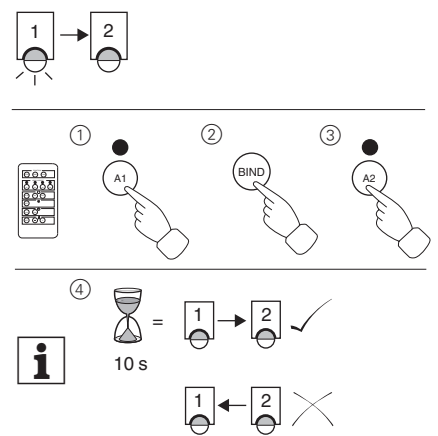
- 1 Press the [SET] button for 1.2 s: ARGUS flashes fast = teaching mode activated. Then, run across the sensor range of the ARGUS once within 30 s. The sensitivity of the ARGUS is set in accordance with the measured movement. You can alter this value afterwards using the [+] and [-] buttons. Press either the [+] or the [-] button for 1.2 s to implement the changes.

### Radio ARGUS in the CONNECT radio system

**i** Optimum protection is achieved by connecting several ARGUS devices in a radio system, as all movement detectors and loads connected to them are always activated, regardless of which movement detector is detecting movement.

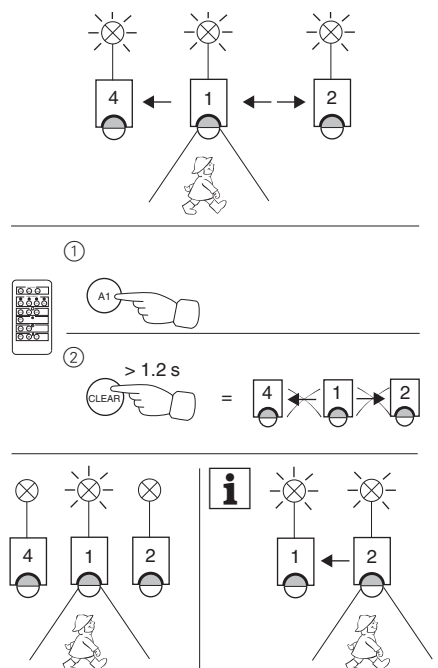


### Connecting ARGUS with another ARGUS



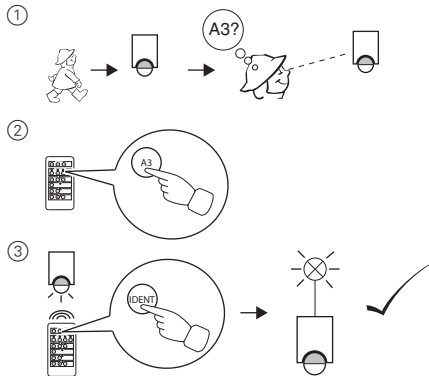
**i** When the second ARGUS is also to switch the first device, a connection must also be made back in the opposing direction. This applies to each additional ARGUS.

### Deleting connections



## Identifying ARGUS

- i** If you should want to reprogram one or several ARGUS devices, you can simply identify the respective ARGUS device via remote control.



## Reset remote control

- Press the **[BIND]** push-button quickly 3x: The remote control is in programming mode.
- Press and hold down the **[BIND]** push-button 1x until an LED (A1...A4) turns green: the remote control is reset.

## Configuring the remote control via PC tool

- Configure the radio system using all the components on the PC.
- Press the **[BIND]** push-button quickly 3x: The remote control is in programming mode:
  - The red LED is flashing: the remote control is the device (Secondary).
  - The red LED is illuminated: the remote control is the system administrator.

## Technical data

Channels:	4
Frequency:	868 MHz, Z-wave
Battery:	1 lithium button cell (CR 2450N)
Display elements:	LEDs
Range:	Free field: Up to 100 m Indoors: Up to 30 m

Information for experienced users who want to use this device with

Z-wave compatible devices from other manufacturers:

Z-wave device type: Controller (the Secondary Controller only, this device cannot be a primary device)

Learn -Mode: (for integration into Z-wave systems of other manufacturers) Triple click on **BIND** push-button. LED flashes approx. 6 seconds

Transmit "Node info frame": Triple click on **BIND** push-button. Wait until the LED goes out.

Push-button	Application
A1	Association Group = 1 Parameter = 0
A2	Association Group = 2 Parameter = 1
A3	Association Group = 3 Parameter = 2
A4	Association Group = 4 Parameter = 3

Z-wave designation	CONNECT designation
Inclusion	Teach (transmits Node info frame), see CONNECT radio system description
Exclusion	Reset to factory settings; complete programming
Primary	Device with system administration

- i** This device can be used with all Z-wave compatible devices, including devices from other manufacturers. Each Z-wave compatible device can be added to a Z-wave system and then also acts as a router, if the routing of commands is supported. Configuration of a Z-wave system is described in the description of devices with system administration function (e.g. CONNECT radio push-button). Some functions are only possible with devices which are compatible with the CONNECT radio system.

## Schneider Electric Industries SAS

If you have technical questions, please contact the Customer Care Center in your country.

[www.schneider-electric.com](http://www.schneider-electric.com) -> „Select your Country“