

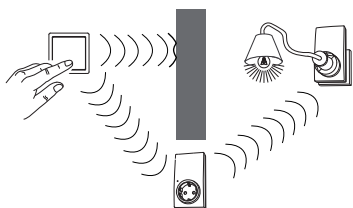
Radio system CONNECT

Operating instructions



CONNECT radio system introduction

The CONNECT radio system is an intelligent, flexible radio network in which the individual devices do not only transmit and receive one-way signals but also communicate with one another. This means the system can route radio signals, for example, via several devices (routing).



The device-specific addressing of the radio commands also enables multiple radio systems to operate side by side. This range of functions makes the CONNECT radio system very reliable, interference-resistant and flexible.

Configuring the system is also simple and convenient. It is especially easy to configure a radio system with up to five devices that are within direct range of each other. That is why this type of radio system is called EASY CONNECT.

Easy-to-use configuration, documentation and diagnostic tools are available for a system across different rooms with up to 100 devices and a wide range of functions (scenes, central function, switching times, customised button assignments and much more).

Creation with a configuration tool

If you want to configure your radio system using a configuration tool, follow the instructions included with this tool or consult your electrician.

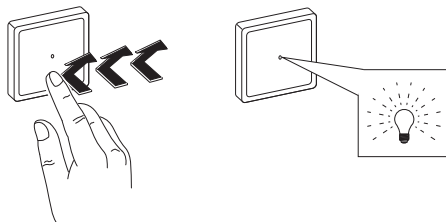
If this is the case, then these operating instructions do not apply to you.

EASY CONNECT creation

i The creation of an EASY CONNECT radio system described in the following applies if you want to connect up to five devices, where all the devices are in direct reception range of one another. Bear in mind that walls or furniture can sometimes significantly limit the range of a radio signal. If you have multiple devices or larger distances, or want to use enhanced device functions or you want to configure a system across various rooms you will need a configuration tool. For more information about this, consult your installer.

Requirements

- Install all receivers in their final installation locations and connect them.
- Connect a corresponding load to the receivers (some receivers use the connected devices to confirm commands during the programming procedure).
- There must be at least one radio push-button in each CONNECT radio system. This manages the system administration during creation. With new systems the push-button, by which a receiver is firstly programmed, manages the system administration. **All other devices are programmed individually and in sequence on this push-button with the system administration.**
- You must be able to set the devices to the learning mode by clicking three times: briefly press the operating surface/programming button or sensor surface (depending on the device) three times in a row. Tap the operating surface or programming button three times at approximately the same speed you would use for a double-click (or triple-click) on a computer mouse (three times in approx. 1.5 seconds). Practice triple clicking with a new push-button



If the LED does not start to flash immediately after you triple-click, you must change the tapping speed.

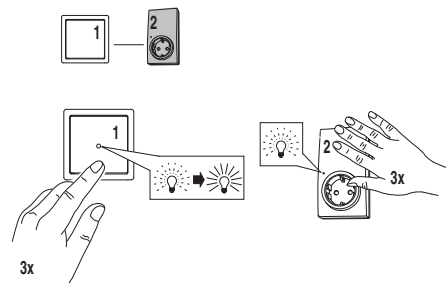
Programming devices

You can create a connection between two devices by programming the devices with the push-button designated for system administration.

- ① Take the push-button that has the system administration to the immediate vicinity of the device to be programmed.
- ② Click three times on the lower operating surface of the push-button.

The LED on the push-button starts to flash briefly and then lights up continuously for approximately 30 seconds. It is only possible to program the device when the LED is continuously lit.

- ③ Click three times on the operating surface/programming button of the receiver to be programmed.

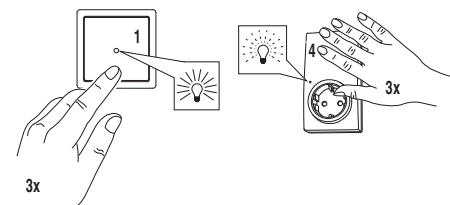
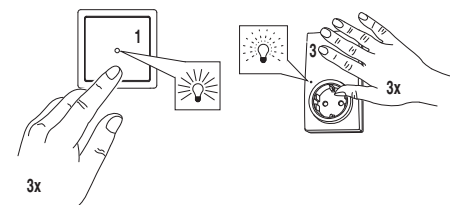
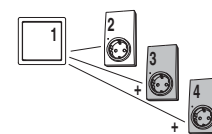


Then program all further receivers **individually, one after the other** via the push-button using the system administration:

- ① Take the push-button that has the system administration to the immediate vicinity of a receiver to be programmed.
- ② Click three times on the lower operating surface of the push-button.

The LED in the push-button lights up for about 30 seconds (without previously flashing).

- ③ Click three times on the operating surface/programming button of the receiver to be programmed.

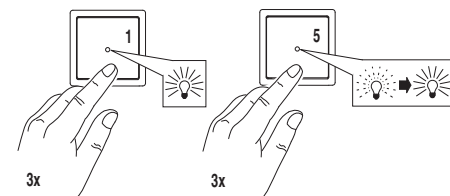
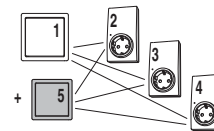


Then program all further transmitters **individually, one after the other** via the push-button using the system administration:

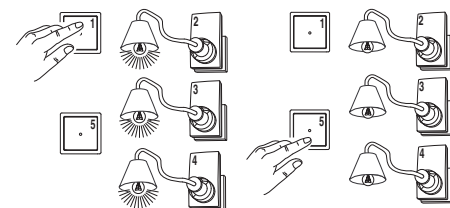
- ① Take the push-button that has the system administration to the immediate vicinity of the transmitter to be programmed.
- ② Click three times on the lower operating surface of the push-button.

The LED in the push-button lights up for about 30 seconds (without previously flashing).

- ③ Click three times on the operating surface/programming button of the transmitter to be programmed.



Following successful programming, you can operate the programmed receivers with the transmitters.





Notes

- You can create separate connections for each operating surface for a push-button 2-gang.
- Additional transmitters then have the same connections and functions as the system administration push-button.
- The receiver functions (e.g. dimming) must all be the same
- Some devices have a two-coloured LED (red/green). The green LED shows that the device has been programmed successfully and that it is connected. If the device has not yet been programmed or the radio connection does not work (when the device is activated), then the red LED lights up.
- For devices with switch relays (e.g. plug adaptors), the switching noise of the relay is not feedback for the operation of the operating surface/programming key. This is particularly important for the programming procedure (quickly pressing three times).

EASY CONNECT modification

Adding devices later:

You can program transmitters subsequently. It is not possible to add receivers subsequently to radio systems with several transmitters.

Removing devices from the system later or changing functions/assignments:

You must reset all devices to their factory settings and then re-program.

Resetting to the factory settings:

Quickly press a push-button/programming key three times. Then press and hold the button/programming button for approx. five seconds until the LED goes out. The device has now been reset to its factory settings.

See also the section "What should I do if there is a problem?" in the operating instructions for the device in question.

Multiple CONNECT radio systems

You can operate multiple CONNECT radio systems in parallel. However, the individual devices can only ever be integrated into one system.

Schneider Electric Industries SAS

If you have technical questions, please contact the Customer Care Center in your country.

www.schneider-electric.com

This product must be installed, connected and used in compliance with prevailing standards and/or installation regulations. As standards, specifications and designs develop from time to time, always ask for confirmation of the information given in this publication.