

# PL7 Micro/Junior/Pro

## Installation manual

07/2008 eng

---

## Document Set

---

**Document set** Further details on installing the different tools (converters, communication drivers, etc.) are given on the documentation CD-ROM supplied with the software.

---



---

# Table of Contents



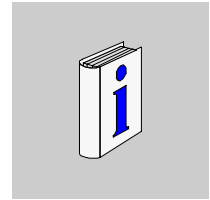
---

	<b>About the Book</b> .....	<b>7</b>
<b>Chapter 1</b>	<b>Software implementation</b> .....	<b>9</b>
	Introduction .....	9
	Terminal configuration .....	10
	How to perform a first installation of PL7 .....	12
	How to Register PL7 .....	14
	How to install PL7 updates and upgrades .....	16
	How to configure the Uni-telway driver with a modem in Windows XP and Windows VISTA .....	18
	How to run PL7 .....	21
	How to uninstall PL7 .....	22
	How to Transfer PL7 User Rights from One Workstation to Another .....	23
<b>Chapter 2</b>	<b>Hardware implementation</b> .....	<b>25</b>
	Connections .....	25

---

---

## About the Book



---

### At a Glance

<b>Document Scope</b>	This manual is used to install the basic PL7 software.
<b>Validity Note</b>	This document takes into account the changes implemented in PL7 V4.5.
<b>User Comments</b>	We welcome your comments about this document. You can reach us by e-mail at <a href="mailto:techpub@schneider-electric.com">techpub@schneider-electric.com</a>

---





---

# Software implementation



---

## Introduction

### Aim of this chapter.

This chapter introduces implementation of PL7 operations.

### What is in this Chapter?

This chapter contains the following topics:

Topic	Page
Terminal configuration	10
How to perform a first installation of PL7	12
How to Register PL7	14
How to install PL7 updates and upgrades	16
How to configure the Uni-telway driver with a modem in Windows XP and Windows VISTA	18
How to run PL7	21
How to uninstall PL7	22
How to Transfer PL7 User Rights from One Workstation to Another	23

## Terminal configuration

---

### Definition

The configuration type determines the level of expected performance. Performance of PL7 software can be affected by simultaneously opening several windows, accessing large quantities of animated data, or using a large application.

---

### Required operating system

PL7 V4.5 software requires one of the following operating systems to be present on the terminal:

- Windows XP Professional
- Windows VISTA Professional Edition 32.

**Note:** Certain functions are unavailable using the Windows VISTA Professional Edition 32 system. For more details, refer to the relevant chapters.

### Minimum configuration

The following table provides the minimum terminal characteristics necessary to implement PL7 software, once Windows is installed on the terminal:

Elements	Characteristics	
System	Windows XP: Pentium 266 MHz processor Windows VISTA: 1 GHz 32-bit processor	
RAM	Windows XP: 128 Mb Windows VISTA: 512 Mb	
Drives	Hard disk	<ul style="list-style-type: none"> <li>● 80 Mb for the software</li> <li>● 25 Mb for temporary directories</li> </ul>
	CD-ROM	
Ports	<ul style="list-style-type: none"> <li>● COM serial port available for connection to the PLC (COM 1 to COM 4)</li> <li>● Parallel port for printer (LPT1 to LPT4)</li> </ul>	
Peripheral	A mouse or pointer compatible with Windows technology	
Monitor	800*600 minimum	

---

**Typical configuration**

The following table shows a configuration for attaining optimal PL7 software performance, once Windows is installed on the terminal:

Elements	Characteristics	
Systems	Windows XP: Pentium 500 MHz processor Windows VISTA: 1 GHz 32-bit processor	
RAM	Windows XP: 128 Mb Windows VISTA: 1GB	
Drives	Hard disk	<ul style="list-style-type: none"> <li>● 80 Mb for the software</li> <li>● 25 Mb for temporary directories</li> </ul>
	DVD-ROM (for technical documentation)	
Ports	<ul style="list-style-type: none"> <li>● COM serial port available for connection to the PLC (COM 1 to COM 4)</li> <li>● Parallel port for printer (LPT1 to LPT4)</li> </ul>	
Peripheral	A mouse or pointer compatible with Windows technology	
Monitor	800*600 or SVGA with 24 bit color management recommended)	

**Please note:**

A more important configuration may be required if other software is used simultaneously with PL7.

## How to perform a first installation of PL7

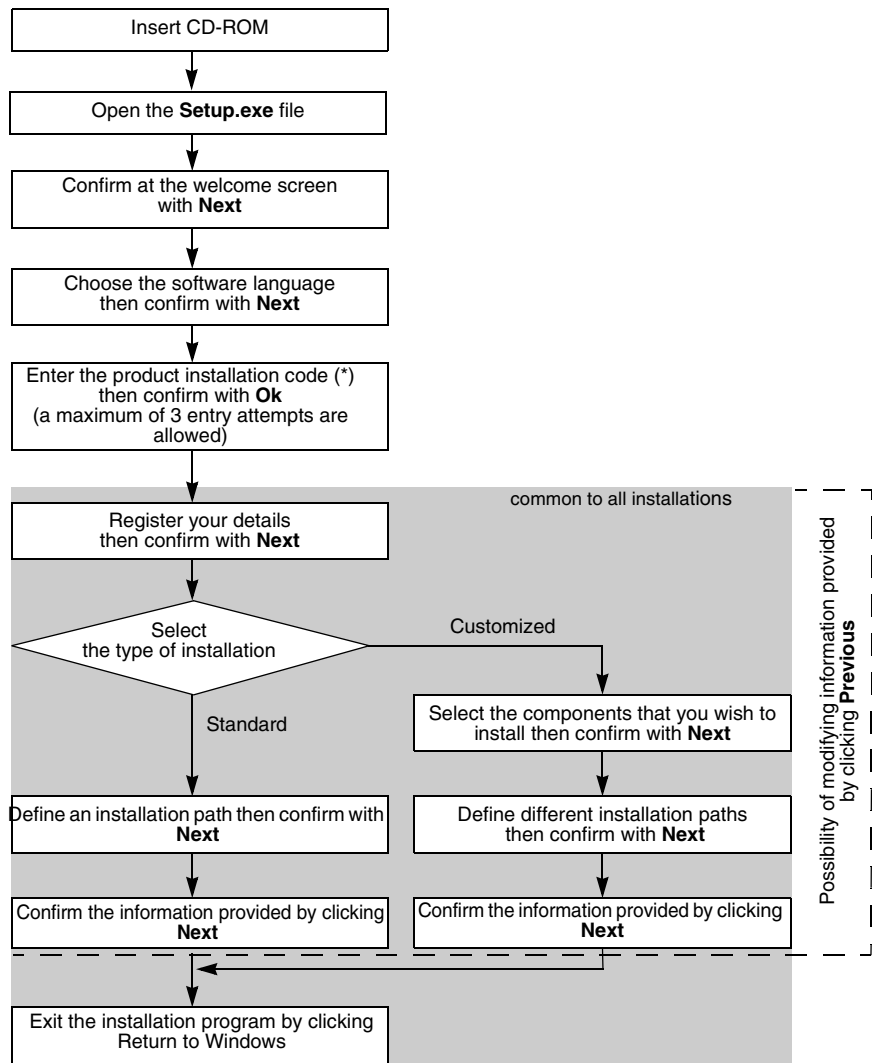
---

### **Introduction**

The procedure for a first-time installation simply involves installing PL7 without searching for a version already installed on the terminal.

## How to install PL7

This procedure describes the different steps for installing PL7 software.



(\*) The installation code is located on the adhesive label on the back of the PL7 programming software CD-ROM.

## How to Register PL7

---

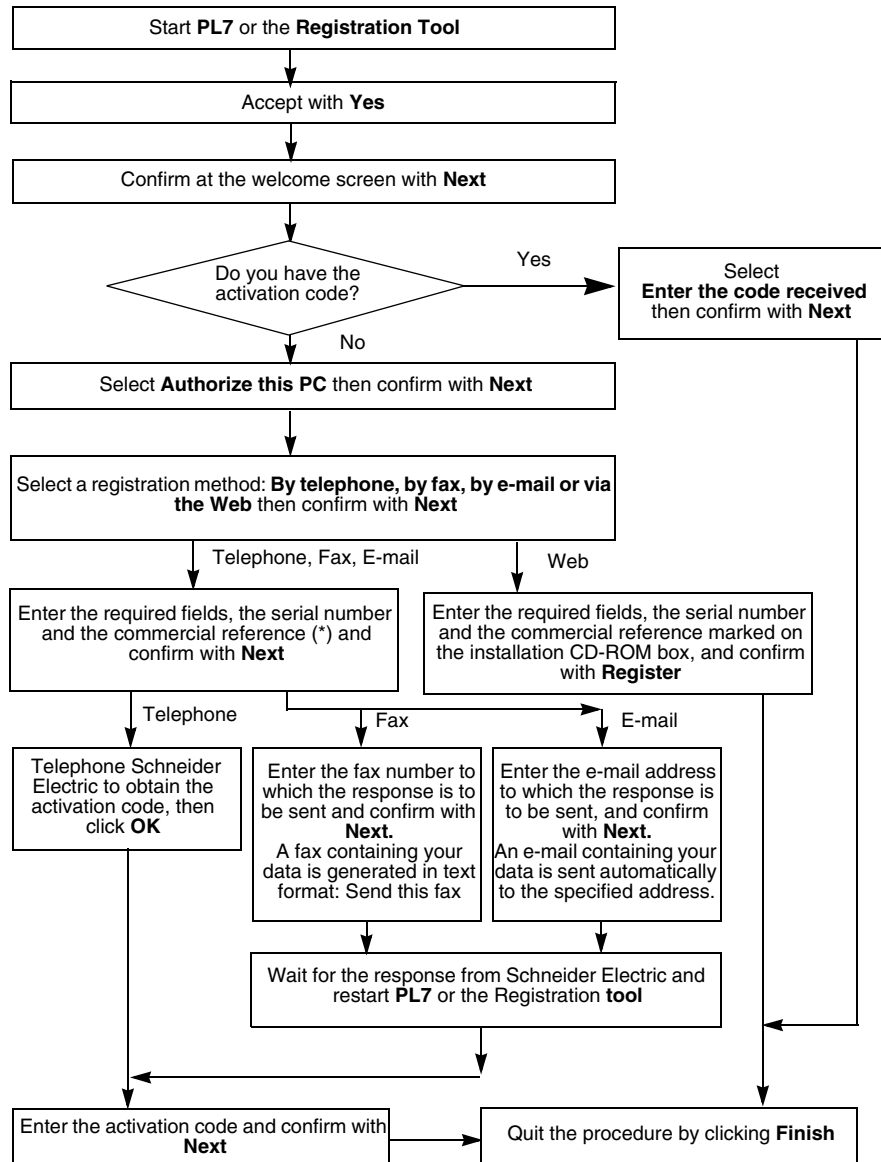
### **At a Glance**

To obtain permanent user rights for the software, you must register it with Schneider Electric. Once the software is installed, you have 21 days to register.

---

**Procedure**

This procedure describes the different steps in registering PL7.



(\*) These numbers are marked on the label inside the box containing the software CD-ROMs.

## How to install PL7 updates and upgrades

---

### Introduction

In order to install updates or upgrades of PL7 V4.5 packages, there must be a coherent earlier version already installed on the terminal.

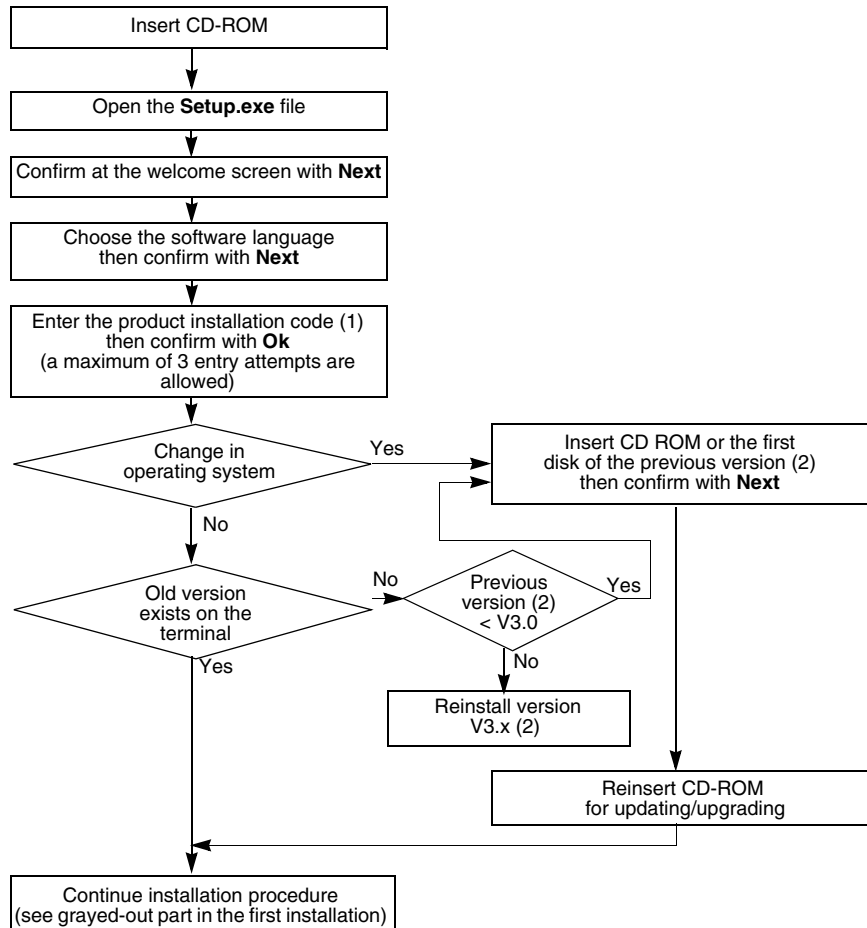
**Note:** If this is not the case, reinstall the earlier version (the software package from the first installation).

---



## How to install PL7

This procedure describes the different steps for installing PL7 software.



(1) The installation code is located on the adhesive label on the back of the PL7 programming software CD-ROM.

(2): First installation software package

## How to configure the Uni-telway driver with a modem in Windows XP and Windows VISTA

---

### Introduction

This procedure can configure the Uni-telway connection driver as a function of the characteristics of the final PLC takeover.

**Note:** For more information on the configuration dialog boxes of the Uni-telway driver, consult the Drivers manual available on the CD-ROM documentation provided with the PL7 software.

---

## How to configure the Uni-telway driver

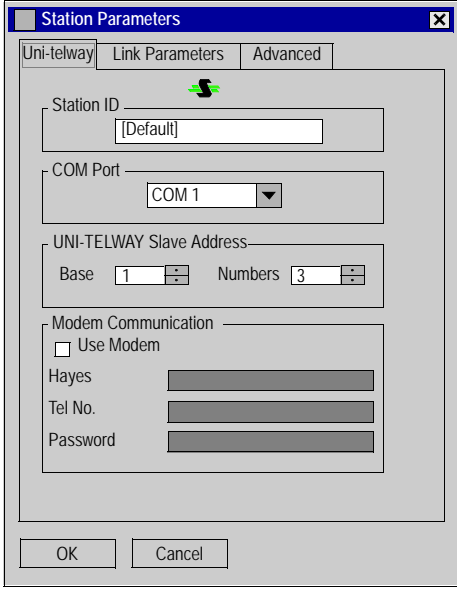
The following table describes the procedure to configure the Uni-telway driver.

Step	Action
1	Carry out the command <b>Start up</b> → <b>Program</b> .
2	Select the <b>Modicon Telemecanique</b> group.
3	Select <b>XWAY Driver Manager</b> .
4	Click on the <b>Uni-telway</b> tab.
5	Click on the <b>Configuration</b> button. <b>Results:</b> The dialog box below appears:

The screenshot shows the 'UNITELWAY Configuration' dialog box. It features a 'Station List' tab and a 'Target Station:' field set to '[Default]'. A table below lists station configurations:

Station ID	Port	Password	Ph
▶ [Default]	COM 1		

At the bottom of the dialog, there are navigation arrows (left, right, first, last), 'Add', 'Modify', and 'Suppress' buttons, and 'OK', 'Cancel', and 'Apply' buttons at the very bottom.

Step	Action
6	<p>Click on <b>Add</b>  <b>Result:</b> The dialog box below appears:</p> 
7	From the <b>Uni-telway</b> tab, configure the communication port ( <b>COM Port</b> ) field.
8	Click on <b>Ok</b>

---

## How to run PL7

---

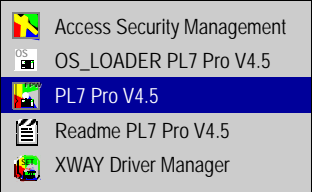
### Introduction

This function allows the user to log on to PL7.

---

### How to log on to PL7

The following table describes the procedure for logging on to PL7.

Step	Action
1	Perform the <b>Start</b> → <b>Programs</b> command.
2	Select the <b>Modicon Telemecanique</b> group.
3	Select the software icon. 

---

## How to uninstall PL7

---

### Introduction

This operation deletes all PL7 software components from the terminal. However, it does not affect:

- application files,
  - Elements shared by other software (PL7 sys.ini, Config.sys, PL7user, PL7temp,...).
- 

### How to uninstall PL7

Uninstallation only deletes selected software. Carry out the following operations for each package to be deleted.

Step	Action
1	Execute the command <b>Start</b> → <b>Parameters</b> → <b>Configuration panel</b> → <b>Add/Delete Programs.ConCCcc</b>
2	Select the <b>Install/uninstall</b> tab.
3	Select <b>PL7***V4.0</b> .
4	Select <b>Add/Delete</b> .
5	Select the elements to be uninstalled (kernel and/or common components),
6	Select <b>OK</b> and confirm with <b>Yes</b> ,
7	Confirm the information screen with <b>OK</b> .

---

## How to Transfer PL7 User Rights from One Workstation to Another

---

### Introduction

This function is used to transfer user rights from a source terminal to a new terminal (destination), thus enabling PL7 to be launched on it.

The transfer can be carried out using:

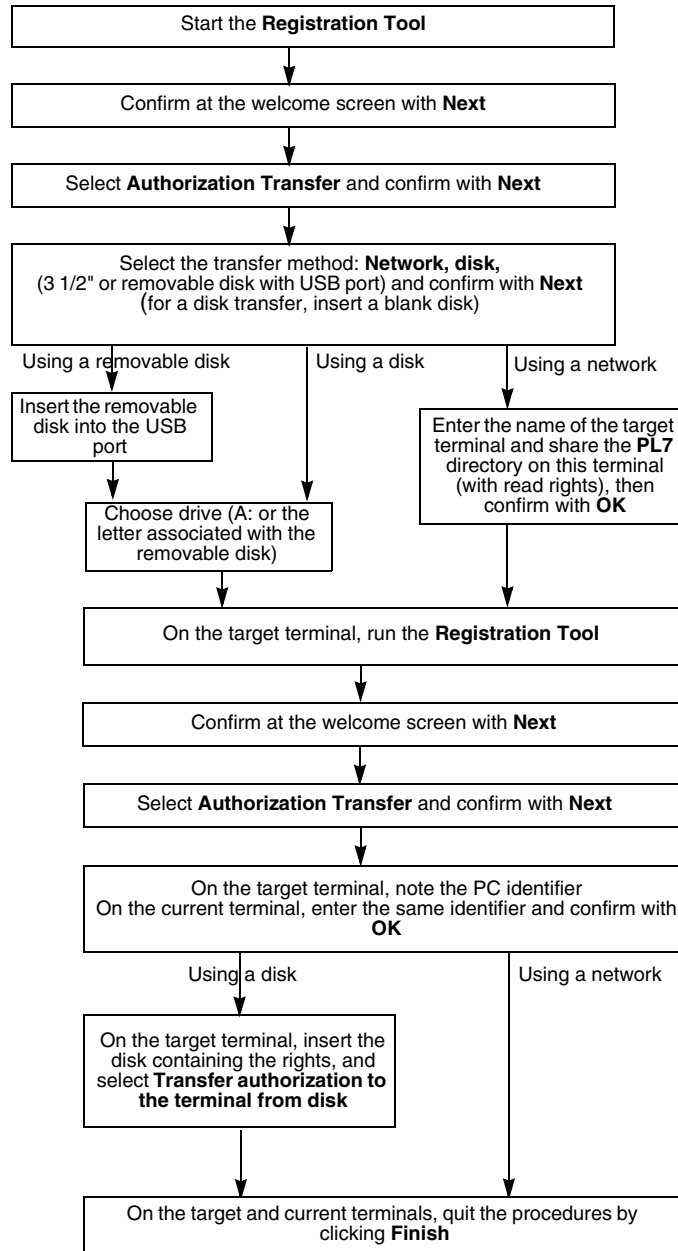
- A 3 1/2" floppy disk,
- A removable disk (USB port),
- A network.

**Note:** Once the access rights have been transferred, the source terminal can no longer use PL7 unless you save again or make a reverse transfer. Following transfer of the rights to floppy or removable disk, if these rights are altered before being transferred to the destination terminal, contact Schneider Electric for a new registration.

---

**How to Perform a Transfer**

This procedure describes the different steps for transferring user rights.





---

# Hardware implementation

# 2

---

## Connections

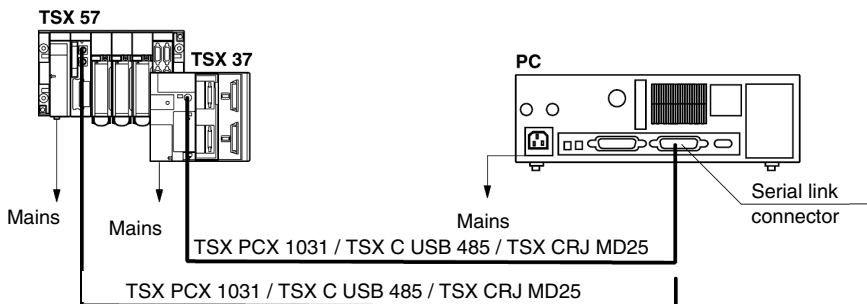
### Introduction

This module deals with the connection of the terminal to the PLC via a cable. A description of how to make other specific connections to the terminal (monitor, keyboard, mouse, printer, mains) is provided in the manufacturer documentation.

Other modes of connections are possible, such as connections via UNITELWAY bus or Modem (via the telephone network).

### PC - PLC connection

To connect a PC, you will require the 2.5 m TSX PCX 1031 or TSX C USB 485 and TSX CRJ MD25 cables, supplied with new software packages (not supplied with update or upgrade variants).



**Note:** The TSX PCX 1031 cable requires the use of the UNITELWAY driver of at least version:

- V1.5 (for Windows XP Professionnel)
- V2.0 (for Windows VISTA Professionnel Edition 32).

