

# MULTIPLES OF RATED CURRENT

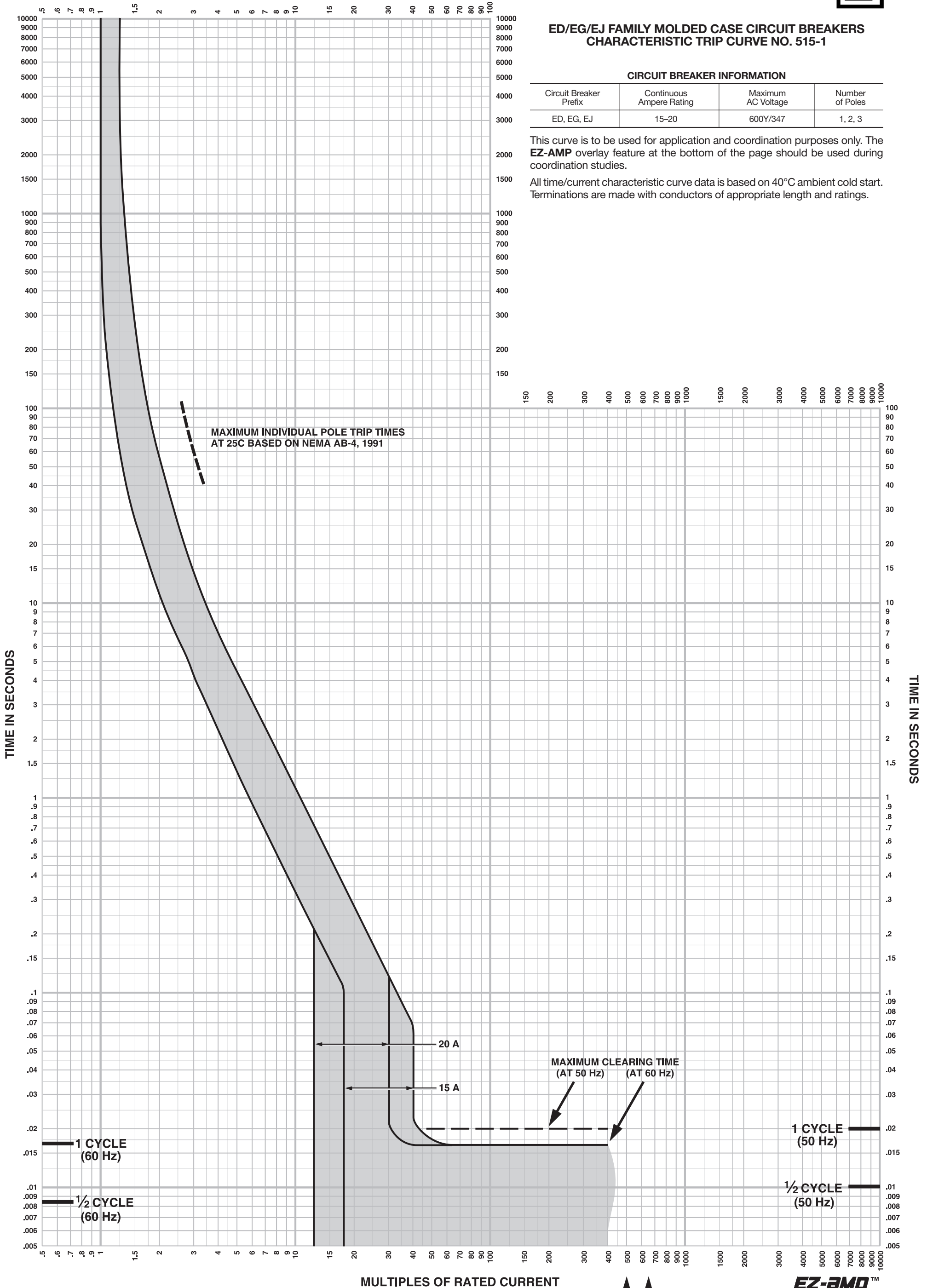
## ED/EG/EJ FAMILY MOLDED CASE CIRCUIT BREAKERS CHARACTERISTIC TRIP CURVE NO. 515-1

### CIRCUIT BREAKER INFORMATION

Circuit Breaker Prefix	Continuous Ampere Rating	Maximum AC Voltage	Number of Poles
ED, EG, EJ	15-20	600Y/347	1, 2, 3

This curve is to be used for application and coordination purposes only. The **EZ-AMP** overlay feature at the bottom of the page should be used during coordination studies.

All time/current characteristic curve data is based on 40°C ambient cold start. Terminations are made with conductors of appropriate length and ratings.



by Schneider Electric

© 2013 Schneider Electric all rights reserved

↑  
20

↑  
15



Curve No. 0515TC1301  
January 2013  
Drawing No. B48095-515-01  
(Replaces 0515TC0001)