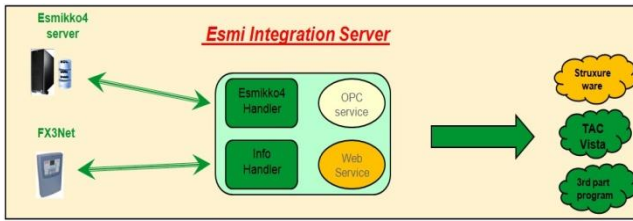
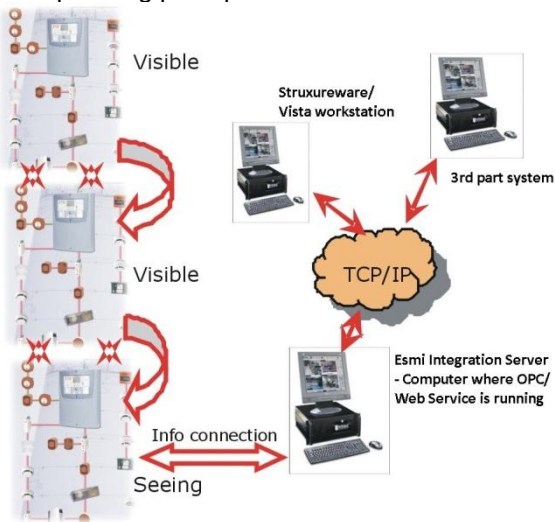


# Esmi Integration Server FFS00393026



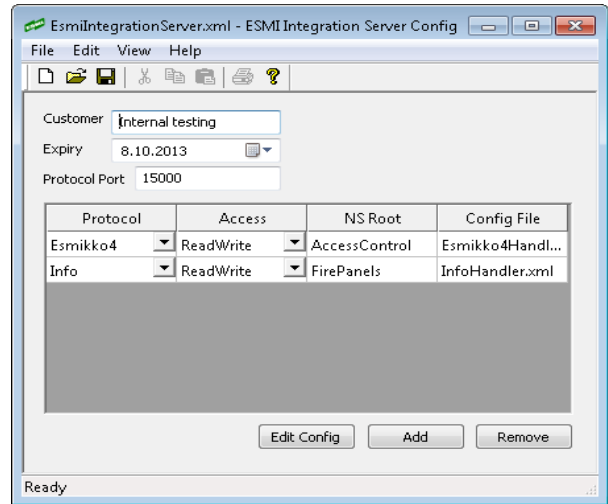
- Windows software, works Windows 7&8 and Windows servers 2008&2012
- Reads Esmi Info/Esmikko4 protocol and deliver that information to whom it may concern
- With **WebServices** integration can be made with **Struxureware**
- Connection between Integration Server server and Fire panel made by RS232/485 connection(terminal server for network access can be used)
- Connection between OPC server and Esmikko4 made by TCP/IP connection
- Operating principle:



- Can be used in stand alone or FxNet/Fx3Net systems(support also Mesa/EsA systems)
- Support several simultaneous info/Esmikko4 connections, in the same Integration Server
- For Fire OPC support also A&E features.
- Configuration in two levels
  - Esmi Integration Server Config defines how many info/Esmikko4 connection we have and also defines type of the connection (one way/Two way)
  - InfoHandler config/ Esmikko4 Handler config: panel configuration files can be imported. Defines also used communication port/TCP/IP address

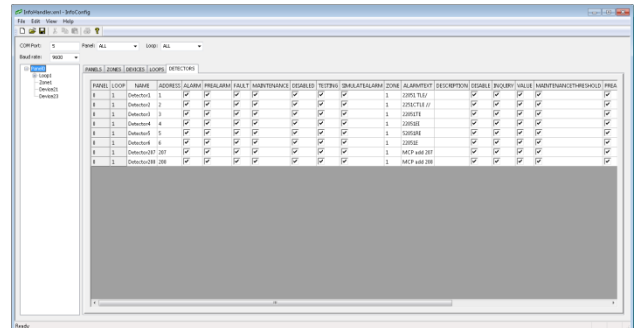
- Licensing
  - Licensing method same as Esgraf
  - License key can be created by Esmilicense.exe
  - Based on used features and the connection type (one way/two way)

## Esmi Integration server Configuration



Handler configuration defines what information will be published through OPC server

## Infohandler config window



## Esmikko4 config window

