

ASCO 5210 Digital Power Meter

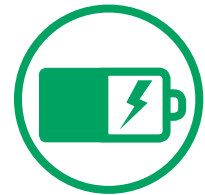
The 5210 Digital Power Meter (DPM) is ASCO's standard solution for providing deeper transparency into the happenings in an electrical circuit. The meter is used to monitor, communicate, and display key electrical parameters that are critical to understanding the real-time health and activity of loads or power sources. The data given by the meter provides the information needed to make key decisions on-site regarding energy management, optimization, utilization, load planning, or even for general reference.



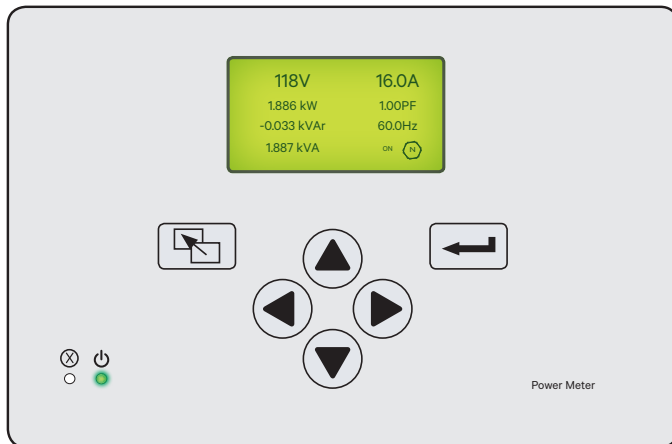
Real-Time Monitoring



Utilization & Load Planning

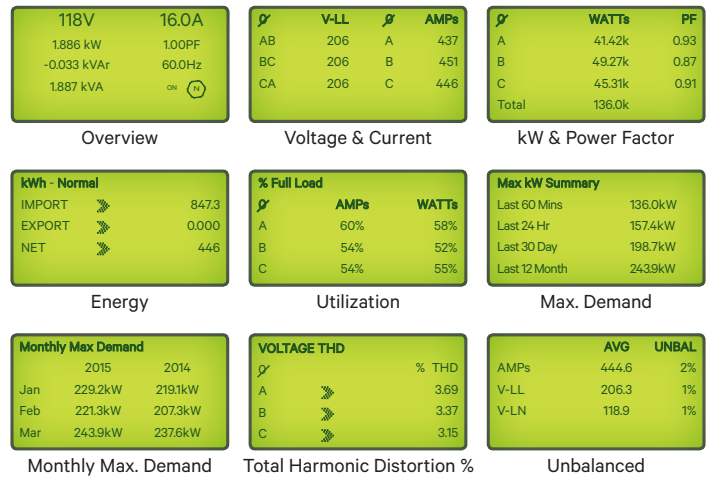


Energy Management



The DPM includes a backlit graphic LCD display and membrane control (keys). All monitoring and control functions can be done from the front of the unit for convenience and safety.

Often times, existing sites are the locations with the most need for added monitoring, but are often the hardest to modify. The 5210 DPM has the flexibility to allow installation in numerous environments. The 5210 can be installed or retrofitted into new or existing Transfer Switches or switchgear. Additionally the 5210 can be purchased pre-mounted in a wall mount enclosure for monitoring third party equipment, or as a loose meter for integration into other systems. Regardless of where it is installed the 5210 will provide the needed data to allow knowledgeable and insightful decision making on a daily basis.



Getting the meter running is as easy as simply wiring the voltage sense lines and current transformers, since it runs off the monitored voltage, saving the time and money of wiring additional, and often difficult to find, control power. Once connected the meter will instantly begin displaying basic data such as voltage, current, and power along with advanced metrics such as total harmonic distortion, kW demand, and energy. All the monitored data is available over Modbus via the onboard serial connection or via the optional Ethernet module which includes a remote and mobile friendly webpage.

ASCO 5210 Digital Power Meter Specifications

Metered Parameters	
• Voltages (LL/LN) & Current	• Total Harmonic Distortion (%)
• Unbalance (V & I)	• Utilization
• Power (kW, kVA & kVAR) & Power Factor	• kW Demand (multiple periods and historical) Complies to NEC 220.87
• Frequency	• Engine Run Time
• Energy (kWh, kVAh & kVARh)	• Min/Max Historical Values

Device Ratings	
Current	0 to 5 ac nominal secondary CT. 4000 V ac isolation, minimum Burden: Less than 0.25 VA per phase
Voltage	70 to 600 V ac nominal, phase to phase (Expandable via power transformers for medium voltage applications)
Frequency	45 Hz to 65 Hz fundamental. True RMS measurements up to and including the 31st harmonic.
Source Selection Input	26 V dc maximum, >10 V dc = active, <1 V dc = inactive
AC Power Requirements	Minimum 70 V L-L Ac/103 mA / 7.2 VA with 50/60 Hertz (Parasitic from voltage sense lines)
DC Power Requirements	Optional backup power supply 9-36 V dc 10 watts. DC power supply should be UL Listed.
User Interface(s)	Isolated RS485 - 2/4 Wire (for external Modbus RTU communication) Optional ASCO Ethernet communication module
Operating Temperature	-4°F to 158°F (-20°C to 70°C)
Storage Temperature	-22°F to 176°F (-30°C to 80°C)
Measurement Category	III
Pollution Degree	PD 2
Humidity	Relative humidity 5% to 85%, non-condensing
Accuracy ¹	0.25% Current, Voltage, Power, Frequency 1.00% Energy, Power Factor, Demand
Standards	UL 61010-1 Safety Requirements for Electrical Equipment for Measurement, Control and Laboratory Use — Part 1: General Requirements
	CSA-C22.2 No. 61010-1, 2nd Edition, 2004-07 Electrical Equipment for Measurement, Control and Laboratory Use — Part 1: General Requirements



ASCO 5210 Digital Power Meter mounted on a transfer switch including optional ASCO Ethernet communication module. (Remote webpage shown)

Ordering Information	
Transfer Switch Accessory	Acc 135 Family
Tech Bundle Accessory	Acc 150A for ATS ² Acc 150B for BPS ^{2,3}
Standalone Meter Kit (Meter & Manual Only)	PN# 966071
In Type 1 Enclosure (5211 PMU) ^{2,4}	PN# 947905
In Type 1 Enclosure with IO (5212 PMU) ^{2,4}	PN# 997684

Notes:

- 1: Further accuracy details available upon request in user manual.
- 2: Includes ride through power module and ethernet communication module.
- 3: Includes discrete IO module for bypass status.
- 4: Enclosures include shorting blocks, fusing and auxiliary power supply.