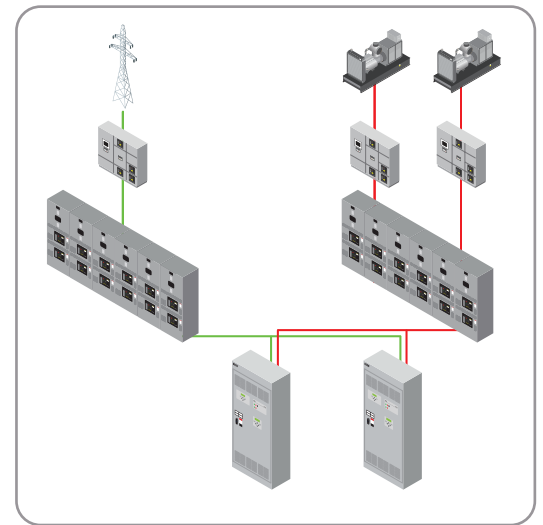
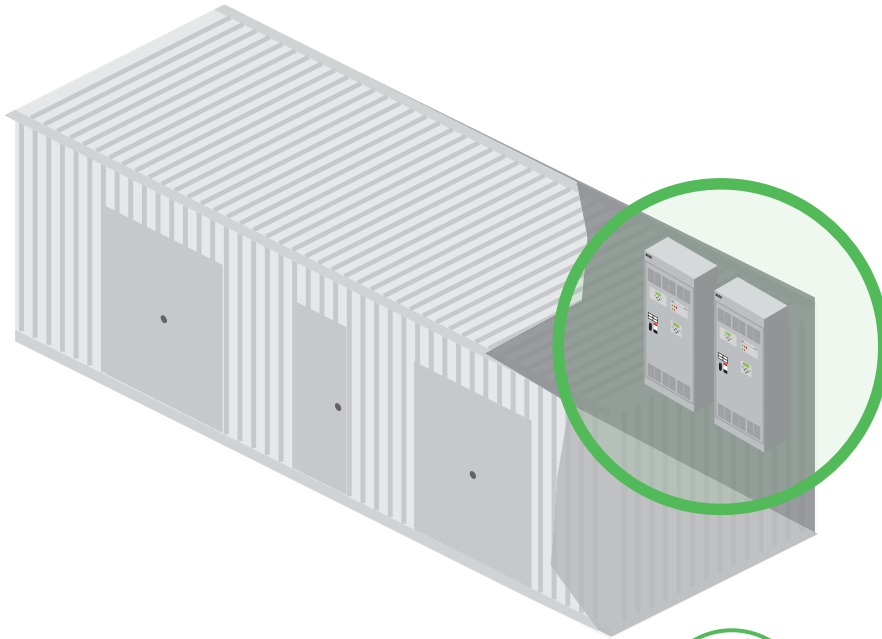
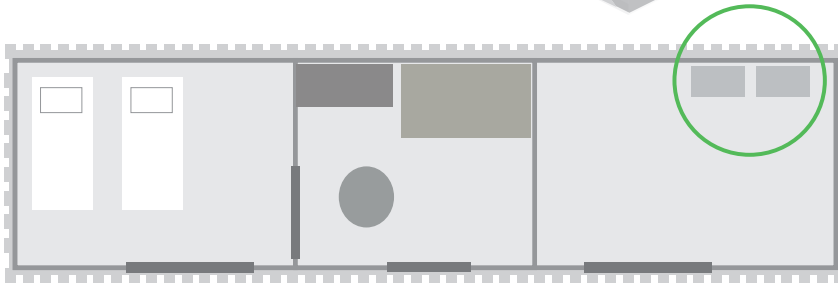


Emerging community health concerns require adding backup power quickly to temporary medical facilities. Shipping containers housing equipment for connecting Normal and Emergency power sources streamline design, procurement, and installation.



Typical Riser Diagram



Each facility needs to transfer its power distribution system to a generator when utility outages occur. This requires a transfer switch together with means to connect it to a generator and monitor its status.

ASCO Automatic Transfer Switches can be installed in containerized power systems. These devices connect backup power when utility outages occur.

The following link shows suitable product. For more information about these and other ASCO critical power products, contact an ASCO representative.

- [4000 SERIES Power Transfer Switch](#)