



The ASCO Model 7700 is a resistive/reactive load bank designed for outdoor installation when up to 3125 kVA of load is required.

## LOAD BANK RATINGS

Standard capacity ratings of:

- 937.5 thru 3125 kVA

Standard load step resolution of 5 kW / 3.75 kVA.

Select from standard three phase voltage ratings of:

- 480-60Hz
- 600-60Hz

Please consult factory for non-standard ratings.

## Blower Motor Control

External 480V, 3 phase, 60 Hz connection is required. An external 120V, 1 phase, 60 Hz supply is required for control circuit operation. An optional step-down transformer is available to provide the required control power. The transformer receives its power from the main power input.

## Cooling System

Approximately 20,000 CFM (per resistor stack) of cooling is provided by integral TEFC or TEAO motor which is direct coupled to the cooling fan blade. The fan motor is fully protected with fuses, motor starter contractor, and overload relay.

## Operator Controls

The standard load control for the 7700 is a remote manual control panel. Controls include: Power On/Off switch, Blower Start/Stop push buttons, Master Load On/Off switch, and Individual Load Step switches. Visual indicators include: Power On, Blower On, and Blower/Air Failure. Other control options are available, please consult factory.

## Construction

The skid of the 7700 is constructed heavy gauge steel. The load banks are constructed of aluminized steel and are designed for continuous outdoor weatherproof operation. Bolt on corner lugs or cleats are provided on the skid for overhead lifting.

All exterior fasteners are stainless steel. The main input bus, load step relays, fuses, and blower/control relays are located in the main enclosure.

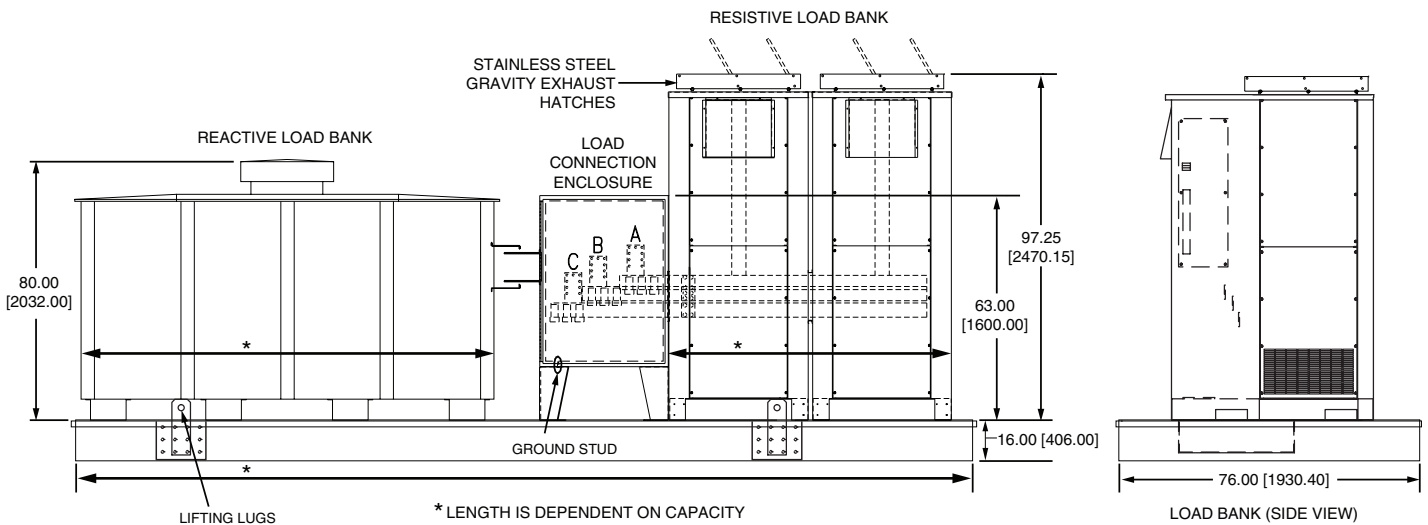
## Finish

The 7700 has a high quality baked polyester powder coated finish with a film thickness of 2.8 +/- 0.4 mils per coat. The standard color is gray (ANSI 61).

## Two Year Warranty Included

The equipment is covered by an industry exclusive 24-month parts and labor warranty.

# Model 7700 Specifications



All dimensions are in inches [millimeters]. Specifications subject to change without notice.

## Resistor Elements

ASCO load banks use helically wound chromium alloy Helidyne elements. Elements are fully supported across their entire length by segmented ceramic insulators on stainless steel rods. These elements are designed to operate at approximately 1/2 of their maximum continuous wire rating.

Elements are positioned within the cooling air stream for optimal performance. Changes in resistance due to temperature are minimized by maintaining conservative watt densities.

The overall load tolerance of the 7700 load bank is -0 +5%. This ensures that advertised kW is delivered at rated voltage.

The elements are continuously rated at the specific voltage. Tests at lower voltages with a corresponding reduction in overall rating may be carried out.

## Reactors

The reactive elements are of non-saturating single and 3 phase iron-core construction impregnated with high dielectric varnish.

## Safety Features

A differential pressure switch is interlocked with the load application controls to prevent load from being supplied if cooling air is not present.

An overtemperature switch is provided to sense the load bank exhaust. This switch is interlocked with the load application controls to disable load from being supplied if an overtemperature condition is present.

The fan motors are protected with fuses and overloads.

The exterior of the load bank has appropriate warning and caution statements on access panels.

Internal access is restricted by bolt on exterior panels.

The air intake on the 7700 is designed to prevent objects greater than 0.50" diameter from being ingested into the unit.

Vertical air discharge is provided and exhaust air is directed upward away from personnel.

## Ambient Temperature

The 7700 load bank is designed for continuous duty cycle with no limitations. The ambient temperatures range is -20°F to 120°F (-28°C to 50°C).

## Mounting

The 7700 is designed for outdoor installation on a concrete pad, structural base or trailer.

## Power Terminals and Cable Entry

A single point connection box is provided for load connections. The connection box is designed for top entry of load cables.

## Optional Accessories

- Control Power Transformer
- NEMA 4 Type Remote Control Panel Enclosure
- Automatic Load Control
- Digital Monitoring
- Digital Load Control
- Remote I/O Control
- Pilot Relay Control
- PLC Control
- Arctic Rating (low temperature)

## Documentation - Operating Manual

A comprehensive operator's manual is supplied electronically via a USB drive.

Sections include: Safety, Installation, Operation, Maintenance, and Troubleshooting.

## Testing and Standards

ASCO load banks comply with NEMA, NEC, and ANSI standards. Quality control system is certified to ISO9001 standards.

## Weight and Dimensions

Dimensions (approx. in/mm)			Weight
Height	Width	Length	
114/	76/	*	*

\*NOTE: Length and weight values are dependent on capacity and voltage.