



The ASCO Model 7500 are capacitive load banks designed for outdoor installation when up to 2000 kVAr(C) of leading power factor load is required.

## LOAD BANK RATINGS

Standard capacity ratings of:

- 75 thru 2000 kVAr(C)

Standard load step resolution of either 5 or 50 kVAr.

Select from standard three phase voltage ratings of:

- 480-60Hz      • 600-60Hz

Please consult factory for non-standard ratings.

## Cooling Fan and Control Circuit

External 120V, 1 phase, 60 Hz required for cooling fan and control power. An optional step-down transformer is available to provide the required 120V control power. The transformer receives its power from the main power input.

## Cooling System

Internal fan(s) provide the necessary cooling air for the load capacitors. The cooling fan(s) operate from a 120V control power source. Fans are protected by an in line over current fuse.

## Operator Controls

The standard load control for the 7500 is a remote manual control panel. Controls include: Power On/Off switch, Master Load On/Off switch, and Individual Load Step switches. Visual indicators include: Power On and overtemperature.

Other control options are available, please consult factory.

## Construction

The 7500 is constructed of aluminized steel and is designed for continuous outdoor weatherproof operation. The base is constructed of formed heavy gauge steel making a rigid structure for lifting. Forklift channels are provided.

All exterior fasteners are stainless steel. The main input bus, load step relays, fuses, and blower/control relays are located in the main enclosure.

## Finish

The 7500 has a high quality baked polyester powder coated finish with a film thickness of 2.8 +/- 0.4 mils per coat. The standard color is gray (ANSI 61).

## Two Year Warranty Included

The equipment is covered by an industry exclusive 24-month parts and labor warranty.

# Model 7500 Specifications

## Capacitors

The dielectric of the capacitor windings are made of metallized polypropylene film resulting in exceptional properties:

- High voltage withstand capability
- Excellent peak current handling capacity
- High capacitance stability
- Long life, even under high electrical stress
- Very low losses

## Safety Features

An overtemperature switch is provided to monitor the temperature of the enclosure. This overtemperature switch is electrically interlocked with the load application controls to prevent load step application in the event of an overtemperature condition.

Each load step is fused using UL class T fuses with 200,000 AIC rating.

The 7500 contains a cooling fan located on top of the air channel which provides the necessary cooling air for the capacitors. The cooling fan operates from a 120V control power. The blower motor is protected by an in-line overcurrent fuse.

The exterior of the load bank has appropriate warning and caution statements on access panels.

Internal access is restricted by bolt on exterior panels.

The air intake on the 7500 is designed to prevent objects greater than 0.50" diameter from being ingested into the unit.

Vertical air discharge is provided and exhaust air is directed upward away from personnel.

## Ambient Temperature

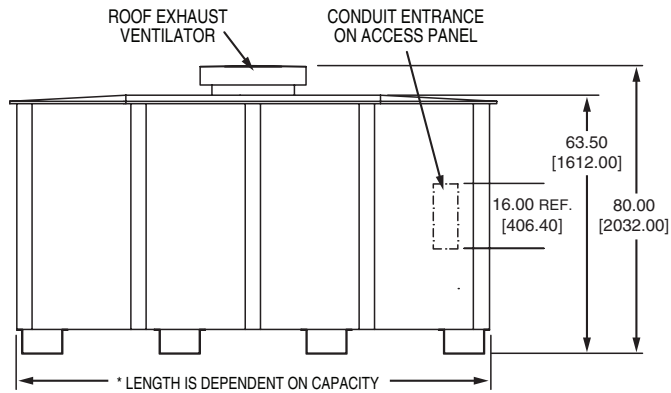
The 7500 load bank is designed for continuous duty cycle with no limitations. The ambient temperatures range is -20°F to 120°F (-28°C to 50°C).

## Mounting

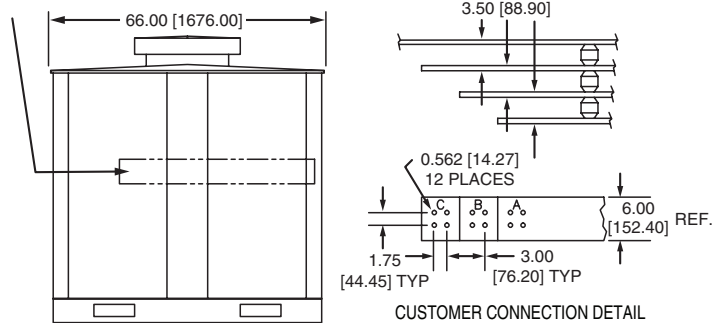
The 7500 is designed for outdoor installation on a concrete pad, structural base or trailer.

## Power Terminals and Cable Entry

Load connections to the load bank are made at the phase bus bars marked A, B, and C, which are located inside the load end of the unit.



CUSTOMER CONNECTION  
SEE DETAIL



All dimensions are in inches [millimeters].  
Specifications subject to change without notice.

## Optional Accessories

- Control Power Transformer
- Load Control Panel
- Digital Monitoring
- Digital Load Control
- Remote I/O Control
- Pilot Relay Control
- PLC Control
- Quick Disconnect Receptacles
- Arctic Rating (low temperature)

## Documentation - Operating Manual

A comprehensive operator's manual is supplied electronically via a USB drive.

Sections include: Safety, Installation, Operation, Maintenance, and Troubleshooting.

## Testing and Standards

ASCO load banks comply with NEMA, NEC, and ANSI standards. Quality control system is certified to ISO9001 standards.

## Weight and Dimensions

Dimensions (approx. in/mm)			Weight
Height	Width	Length	
80/2032	66/1676	*	*

\*NOTE: Length and weight values are dependent on capacity and voltage.