



The ASCO Model 3066 are resistive, AC load banks designed for static or moveable, outdoor installation when up to 680 kW of electrical load is required.

LOAD BANK RATINGS

Standard capacity rating up to:

- 680 kW

Standard load step resolution:

- 1 kW

Standard voltage ratings:

Voltage*	Hz	Max. Capacity
380	50	600 kW
400	50	600 kW
415	50	635 kW
440	60	665 kW
480	60	680 kW

*NOTE: Other voltages are available. Please contact sales for further information.

Airflow and Noise Level

Forced-air cooling is by a single axial metal-bladed aerofoil fan, giving horizontal discharge. Fan motor rated at 50Hz (DOL), 2.5kW at 3 phase and airflow is 6.5 m³/s (13,772 CFM).

Typical noise level is 73dBA at 50Hz. Measurements are taken 3 metres from the load bank and at 90° to the airflow direction. Noise readings are subject to a tolerance of ±3dBA.

Load Control

The load contactors are actuated by the specified load control system. Options range from simple switches to the comprehensive SIGMA system, please see separate data sheet and system layout diagram for further details.

Construction

The frame of the load bank is constructed from 2mm 'Zintec' steel, folded and welded to form a monocoque construction.

Double skinned recessed doors allow easy access to the separate enclosures for control, switch gear and power connections.

The double skinned, horizontal discharge duct with aluminised steel heat shield contains the resistive load elements and the cooling fan.

Stainless steel mesh screens on the main air inlet and outlet provide protection against access to hazardous parts to IP1X.

All electrical enclosures are to IP54.

An optional single and four point lifting frame has corner tie bars to connect the frame to the fork base. The overall effect provides a mini crash frame.

Finish

High quality two-pack industrial acrylic paint system applied to an electro-plated zinc base. Standard colour is grey (RAL7042). Other colours are available on request. Stainless steel construction is also available as an option.

Warranty

The equipment is covered by a 12-month warranty as detailed in our Conditions of Trade.

Model 3066 Specifications

Resistor Elements

The 3066 load banks use replaceable, non-finned sheathed elements. The outer sheath is made from stainless steel to give good corrosion resistance. The heating element is an 80/20 nickel-chrome wire embedded in compacted magnesium oxide powder, giving good thermal and insulation properties.

The elements are very conservatively rated and there is no need for cooling fins to dissipate the heat into the airflow. This ensures that foreign matter or a loosely fitting fin cannot possibly cause hot spots and therefore ensures high reliability.

The elements are designed to operate continuously at up to 800°C (red/orange). The actual temperature is below 500°C (dull red). This gives a wide margin of safety and very long life.

Load tolerance is within 2½ % of total capacity.

Elements are continuously rated at the specific voltage. Short-term tests with fluctuations up to 10% above rated voltage are permissible. Tests at lower voltages, with a corresponding reduction in overall rating, may be carried out. Power is proportional to voltage squared.

Safety Features

An emergency stop/disconnect switch gives full isolation of the fan and control supply.

A 110 Volt AC control circuit transformer provides isolation and operator safety.

Stop/start buttons ensure the load bank will not automatically restart. On static load banks provision is also made for the connection of remote stop/start buttons.

The fan motor is fully protected with fuses and a thermal overload.

Movable load banks are also fitted with phase rotation detection to automatically ensure correct airflow direction. Single phasing protection is provided by the overload. Thermal detectors are fitted to protect against overheating in the resistive duct and switchgear enclosure.

Over voltage protection for the control and load circuit is provided by Sigma load control if specified.

Each element group and its associated contactor are protected by an HRC fuse. This is very important when testing large capacity power supplies, due to the possible high fault currents.

The load contactors are interlocked with the fan controls to ensure load can be applied only when the fan is running.

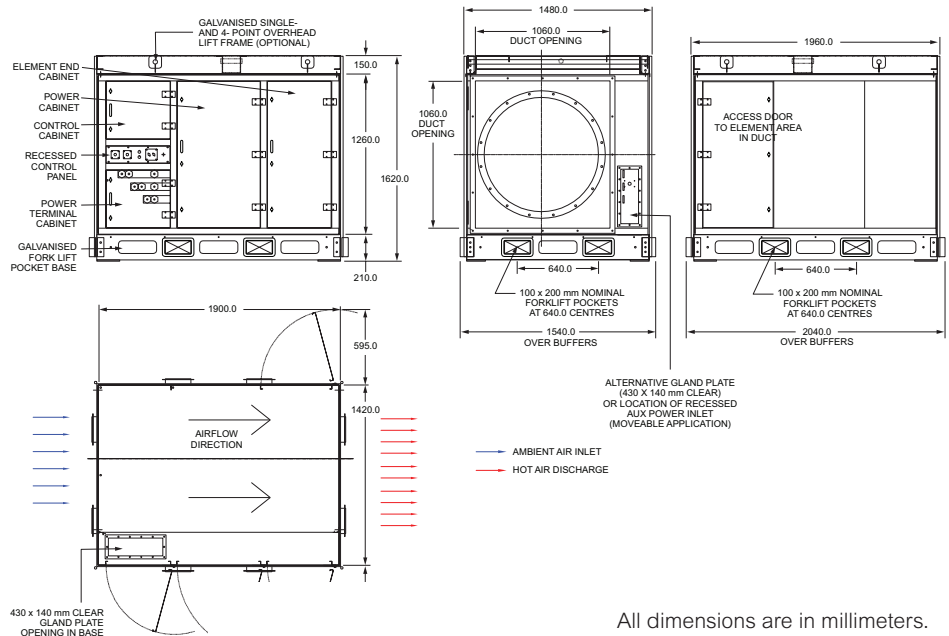
Internal access is restricted by key operated door catches. Polycarbonate screens behind the doors prevent accidental contact with live parts.

Ambient Temperature and Humidity

Standard load banks are rated at 35°C, when protected from solar radiation. Load banks rated at 50°C are also available. Average temperature rise is 92°C.

Ambient humidity may be up to 90% RH, non-condensing.

ASCO Power Technologies
NJ Froment & Co Ltd, Cliffe Road, Easton-on-the-Hill,
Stamford, PE9 3NP, UK



All dimensions are in millimeters. Specifications subject to change without notice.

Mounting

The load bank is mounted on a hot-dip galvanised forklift pocket base.

Power Terminals & Cable Entry

Power terminals are located behind a dedicated door. A neutral terminal is fitted for instrumentation purposes only.

Static load banks are fitted with a blank non-ferrous gland plate.

Moveable load banks are fitted with a pre-punched, non-metallic gland plate with a flexible rubber shutter, to enable safe temporary power connections to be easily made in a controlled test environment. A blank non-ferrous gland plate is also supplied to enable a fully compliant installation to IP54 if necessary.

The gland plate opening is 430 x 140mm.

Auxiliary Supply

The fan and control circuit may be powered from an external auxiliary supply or from the supply on test, provided it is of the correct voltage and frequency. Lower voltages and other frequencies must be tested using the external supply.

On static load banks, connection is by internal terminals.

On movable load banks, an IEC 60309-2 plug and socket with a three-position switch enables quick and easy connection.

Optional Accessories

- Airflow Turning Elbow
- Anti-Condensation Heater
- Castor Sets
- Dual 50/60Hz Fan & Control Circuit
- Highway Trailer
- Protective Cover
- Raised Base/Legs
- Single & Four-Point Lifting Frame
- Special Paint Finish

Please see system layout diagram for further details.

Documentation – Operator Handbook

A comprehensive illustrated operator's manual is supplied. Sections cover safety, installation, commissioning, operation, calibration, maintenance and fault finding.

Testing and Standards

Functional operation and load tests are completed on all load banks, before despatch, in line with our ISO 9001:2008 procedures.

ASCO load banks comply with international standards and are CE marked to confirm compliance with both the EMC and Low Voltage Directives.

Weight and Dimensions

Measurements: mm/in. and kg/lbs.

Model	3066
Length along airflow	2040/80.31
Width across airflow	1540/60.63
Height on forklift base	1470/57.87
Approximate weight	840/1851
Add height for optional lift frame	150/5.90
Add weight for optional lift frame	110/242

Additional Information

An extensive range of resistive, inductive, capacitive or combined load banks of varying capacities are also available. For further information on this model or any other 3000 SERIES load bank, please contact a member of our sales team.