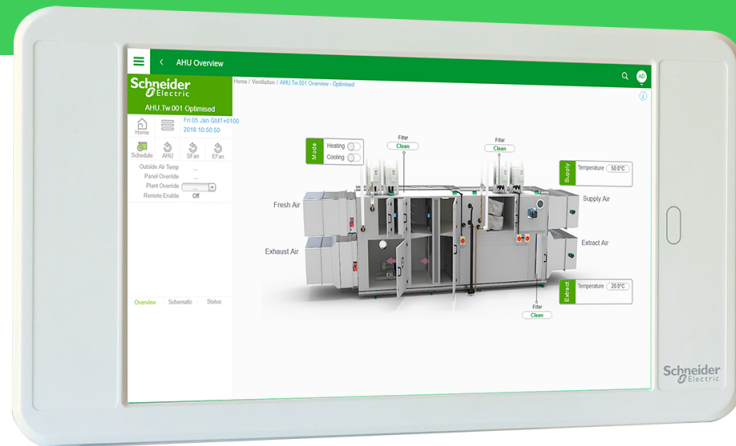


AD v2

SmartX Controller



Introduction

SmartX Controller – AD v2 (AD v2) is a Human Machine Interface (HMI) that can easily be locked to an application such as a web browser running EcoStruxure Building Operation WebStation to create a dedicated tool for local operation and maintenance of an EcoStruxure BMS.

Features

AD v2 provides an easy-to-use interface through which users and engineers can locally access EcoStruxure BMS servers from a handheld device or an HMI terminal installed on a control cabinet or a wall. The simplified user interface and the intuitive touchscreen navigation make it easy for you to operate and maintain the system.

Fully integrated HMI solution

With AD v2, Schneider Electric offers a fully integrated HMI solution that encompasses benefits such as one-stop shopping, ease of use, ease of installation, and robust and secure locking mechanism.

Based on a top-rated Android platform

AD v2 offers a reliable HMI solution based on a top-rated Android platform with high-resolution touchscreen display, high-quality design, leading technology, and good communications and graphics performance. The display size is 10.1 inches, which is an ideal size for many HMI solutions.

Protective frame for quick and easy installation

AD v2 is delivered with a frame that protects against dust, moisture, and mechanical damage. The frame is quick and easy to install. The frame has a base with hole mount patterns to support a variety of installation options on control cabinets and walls. Installation on VESA stands is also supported.

Preinstalled apps

AD v2 is delivered with the following set of preinstalled apps:

- SmartXKiosk for locking AD v2 into Kiosk mode
- SmartX AD-Link for enabling IP over USB communication
- Google Chrome web browser

Dedicated HMI for operation and maintenance

With the preinstalled SmartXKiosk app, you can easily lock AD v2 into Kiosk mode and turn it into a dedicated HMI for operation and maintenance. Kiosk mode enables you to select which app can be used by the end user and prevents the user from leaving the selected app, running other apps, interacting with the OS, and accessing the file system. The benefits of Kiosk mode include enhanced data security, reduced risk of theft, and easier technical support. AD v2 offers a robust Kiosk mode with high cybersecurity.

AD v2

SmartX Controller

Variety of apps including Google Chrome

The Schneider Electric apps portfolio offers a variety of apps for different user profiles, functions, and steps of the building life cycle. You can download and select the app you want AD v2 to run in Kiosk mode.

WebStation comes built-in with every EcoStruxure BMS server and provides a web-based user interface for operation and maintenance of EcoStruxure BMS servers. You can easily make the preinstalled Chrome web browser run WebStation in Kiosk mode. For more information, see the WebStation specification sheet.

HMI solution for different use cases

AD v2 offers an HMI solution that is suitable for different use cases and locations. With AD v2 locked to the Chrome web browser running WebStation and installed on a control cabinet in a plant room, you get an excellent HMI for local maintenance. Without the protective frame, you can use AD v2 as a portable HMI terminal.

Specifications

Electrical

DC input current consumption	500 mA to 1.3 A
DC input supply voltage	5 VDC (USB)

Environment

Ambient temperature, operating	5 to 35 °C (41 to 95 °F)
Ambient temperature, storage	-20 °C to +60 °C (-4 °F to +140 °F)
Maximum humidity.....	95 % RH non-condensing

Material

Enclosure	UV stable ABS
Ingress protection rating	IP 54
Plastic flame rating.....	UL94-HB

Communication and power

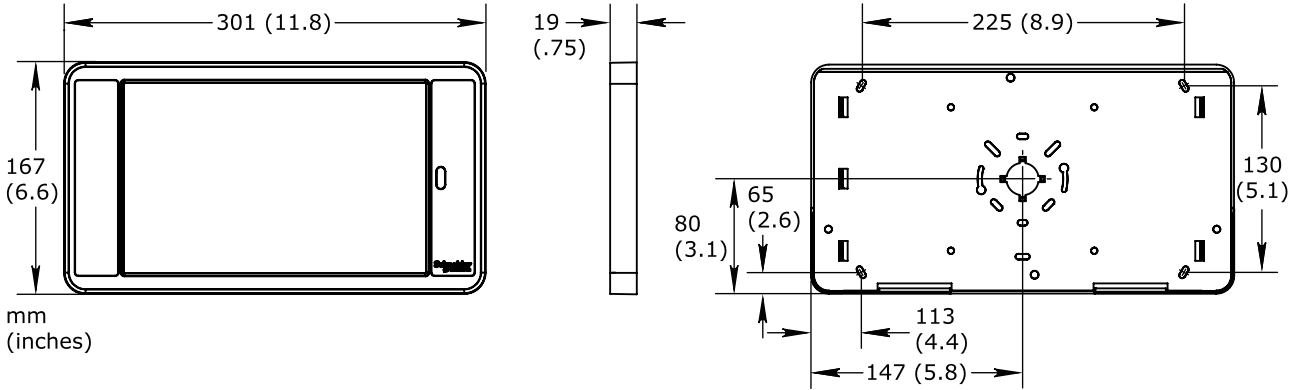
The preinstalled SmartX AD-Link app enables AD v2 to communicate with EcoStruxure BMS servers over a USB connection. During installation and commissioning, you can use a wireless access point to establish communication between AD v2 and EcoStruxure BMS servers. AD v2 can be powered by a SmartX AS-P or AS-B server through the USB cable. In all other cases, AD v2 needs to be powered by an approved USB power adapter. It is recommended to use only USB cables designed for AD v2. The required USB cables can be ordered from Schneider Electric.

AD v2

SmartX Controller

Mechanical

Dimensions (W x H x D).....301 x 167 x 19 mm (11.8 x 6.6 x 0.75 in.)



Weight0.743 kg (1.638 lb)

Agency compliances

EMC EN 301 489-1 V1.9.2; EN 301 489-17 V2.2.1; EN 301 489-3 V1.6.1; EN 55024:2010; EN 55032:2012; FCC Part 15, Sub-part B, Class B; ICES-003, Class B

RadioEN 300 328 V1.9.1; EN 300 440-2 V1.4.1; EN 301 893 V1.8.1

SAR..... EN 50566:2013; EN 62479:2010

Safety..... EN 60950-1:2006 + A11:2009 + A1:2010 + A12:2011 + A2:2013

FCC ID..... A3LSMT580

Communications

USB1 USB 2.0 port

WiFi.....802.11 a/b/g/n/ac 2.4 + 5 GHz, VHT80

CPU

Frequency1.6 GHz

Type..... Octa-core (8-core)

Internal memory2 GB RAM, 32 GB ROM

Operating system

Supported versions.....Android 7.0 (Nougat)

Display

Display resolution1,920 x 1,200 pixels

Display aspect ratio 16:10

Display size 10.1 inches (255 mm)

Display typeTFT LCD, touchscreen

Part numbers

AD v2 bundle
(Includes tablet and protective frame with base)..... SXWADBUND10002

USB cable, 1.5 m (5 ft)
For connection to SmartX AS-P server, SmartX AS-B server, or USB power adapter..... SXWADUSBA10001

AD v2

SmartX Controller

USB cable, 3.0 m (10 ft) For connection to SmartX AS-P server, SmartX AS-B server, or USB power adapter.....	SXWADUSBA10002
USB cable, Y-shaped, 1.5 m (5 ft) For connection to Automation Server and USB power adapter	SXWADUSBB10001
USB cable, Y-shaped, 3.0 m (10 ft) For connection to Automation Server and USB power adapter	SXWADUSBB10002

Regulatory Notices

Federal Communications Commission

FCC Rules and Regulations CFR 47, Part 15, Class B

This device complies with part 15 of the FCC Rules. Operation is subject to the following two conditions: (1) This device may not cause harmful interference. (2) This device must accept any interference received, including interference that may cause undesired operation.

FCC Equipment Authorization ID: A3LSMT580 for the radio certification.

Industry Canada

This Class B digital apparatus complies with Canadian ICES-003.

This device complies with Industry Canada license-exempt RSS standard(s). Operation is subject to the following two conditions: (1) this device may not cause interference, and (2) this device must accept any interference, including interference that may cause undesired operation of the device.

Operation in the band 5150-5250 MHz is only for indoor use to reduce the potential for harmful interference to co-channel mobile satellite systems.

Regulatory Compliance Mark (RCM) - Australian Communications and Media Authority (ACMA)

This equipment complies with the requirements of the relevant ACMA standards made under the Radiocommunications Act 1992 and the Telecommunications Act 1997. These standards are referenced in notices made under section 182 of the Radiocommunications Act and 407 of the Telecommunications Act.

CE - Compliance to European Union (EU)

Directive 1999/5/EC on radio equipment and telecommunications terminal equipment (R&TTE)

Directive 2011/65/EU on the restriction of the use of certain hazardous substances (RoHS)

This equipment complies with the rules, of the Official Journal of the European Union, for governing the Self Declaration of the CE Marking for the European Union as specified in the above directive(s).



WEEE - Directive of the European Union (EU)

This equipment and its packaging carry the waste of electrical and electronic equipment (WEEE) label, in compliance with European Union (EU) Directive 2012/19/EU, governing the disposal and recycling of electrical and electronic equipment in the European community.