



Green Flexible Digital

ECOFIT™ modernization solutions

Greater sustainability

- Efficient use of natural resources by replacing only active components
- Recycling of obsolete equipment
- Enabled energy efficiency monitoring

Improved efficiency

- Lifetime extension for existing switchboards
- Less downtime than with a full panel replacement
- Reduced plant shutdown time from days to hours
- No change of cables and no civil work
- Improved safety of people and surrounding equipment

Resiliency with digital capabilities

- Enabled asset condition monitoring
- Remote operation ability
- Access to digital energy management solutions and connected service plans

Benefits

- Digitization giving access to energy management
- Enhanced process dependability
- Optimized maintenance service costs
- New ECOFIT spare parts availability

Expert help from Schneider Electric

- Worldwide support with Schneider Electric's warranty
- Skilled installation and commissioning experts available locally
- Access to the know-how of a global leader in energy management solutions

se.com/ecofitselector

Life Is On

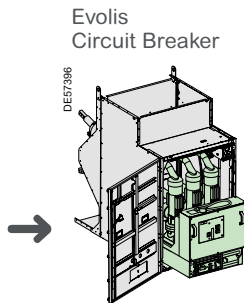
Schneider
Electric

Cradle to Cradle/All breaker types Withdrawable CB with F400 cassette

Original brand: all brands

ECOFIT™ proposal

All breaker types
Compatible with all open Air Insulated Switchgear legacy and no legacy cubicles with minimum inside panel width ≥ 1105 mm



With ECOFIT™, a true extended life time

This solution consists in fitting a cradle inside an existing panel:

- It is particularly adapted for non Schneider Installed Base.
- ECOFIT™ solution with shutters and mechanical interlocks embedded.
- Only the fixed connections (between the cradle and existing busbar) are customized.
- No age condition of the existing equipment.
- Only the width of the existing panel has to be considered.

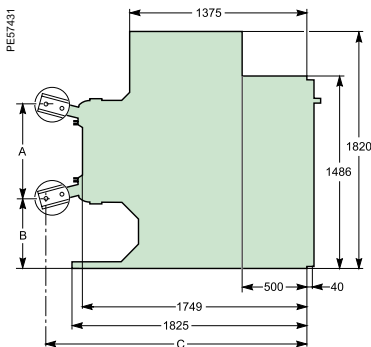
Main technical characteristics

All types		
Rated current (Ir)	1250-2500A	1250A
Short circuit current (Isc)	Up to 40kA	Up to 31.5kA
Rated voltage Un (50/60 Hz)	24-36kV	40.5kV

	F400-SF	F400 cassette
Technology	SF6	SF6
Rated voltage Ur (kV)	24-36	40.5
Surge withstand voltage Up (kV)	125-170	185
Nominal frequency (Hz)	50-60	50-60
Rated current Ir (A)	1250-2500	630-1250
Short circuit current Isc (kA)	25-40	31.5
Short circuit duration Tk (s)	3	3

	MC1	MC2
Switching sequence	O-3 min-CO-3 min-CO O-0.3 s-CO-3 min-CO O-0.3 s-CO-15 s-CO	
Closing time (ms)	<65	<65
Opening time (ms)	<50	<50
Number of switching operations	10000	10000
Service temperature (°C)	-25/+40	-25/+40

Cassette	1250 A	2500 A - 3000 A
Dimensions (mm)		
A	748	752
B	540	533
C	2030	2030
Weight (kg)	750	850



Make the most of your equipment with available add-ons



Protection relays
Easergy Px, Sepam, MiCom
Arc Flash

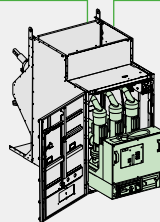


PROTECTION

SUSTAINABILITY



SF6 Recovery Services
SF6, raw material recovery



TECHNOLOGY



Vacuum vs SF6, Oil, Air
Vacuum solutions may require overvoltage protections

