

Innovations

Vacuum disconnection : Positive mechanical indication is more reliable than a visible gap

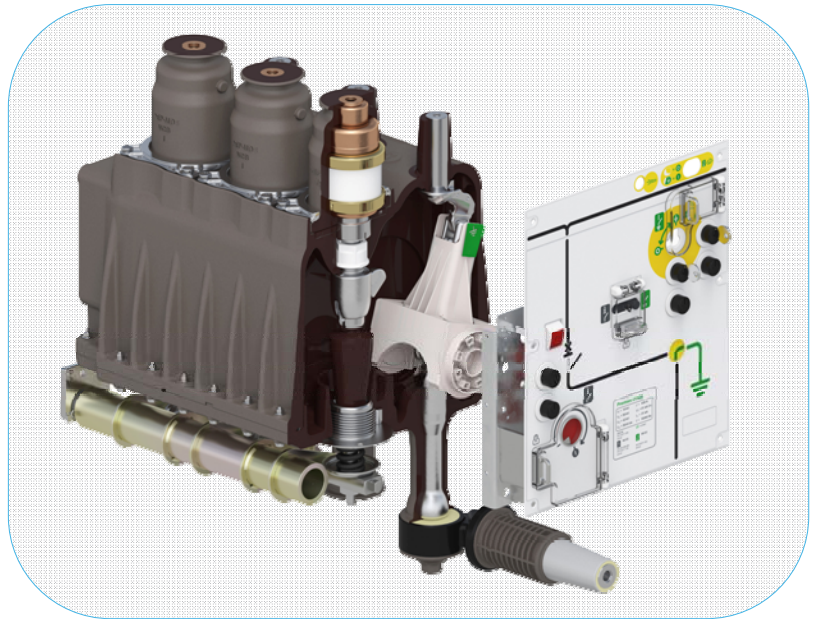
Positive mechanical indication on earthing switch provides the highest safety



Principle

You have **visible gap** if you really can see the gap between **contacts** when the **disconnecter or the earthing switch is open**.

You have **positive mechanical indication** when a mechanical indicator is directly linked with the movable contact of the disconnecter or the earthing switch.



Main points to remember

- *Visible contact indication is still often used in overhead HV switchgear for earthing switches and disconnectors*
- *In compact metal-enclosed medium voltage switchgear, the positive mechanical indication is the most dependable:*
 - *Easy to see on the front panel*
 - *No mistakes regardless of the products integrated in the cubicle*
 - *Standardised earth symbol*
 - *Validated by specific robustness tests according to IEC standard*

Innovations

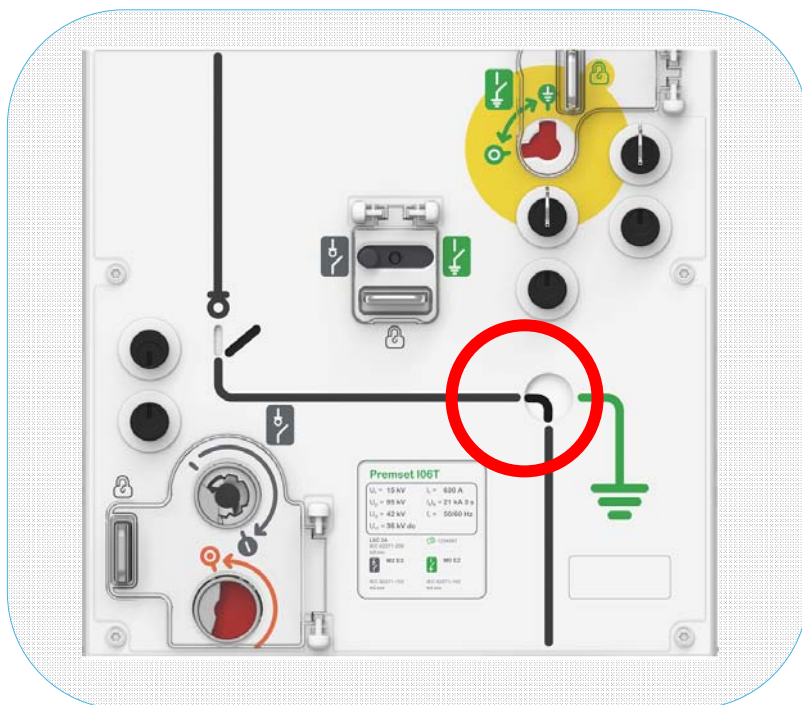
Vacuum disconnection : Positive mechanical indication is more reliable than a visible gap

Positive mechanical indication on earthing switch provides the highest safety



Advantages

- Positive mechanical indication prevents possible bad interpretation of contact position. Utilities often prohibit visibility of contacts to eliminate any risk of accident.
- Positive mechanical indication is safer & quicker to see in case of emergency (night, hurry,...).
- There is no possible misinterpretation: as soon as an operator opens the substation door, he knows the disconnecter and earthing switch positions thanks to standardised symbols.
- The mechanical indication of Premset is compliant with high level requirements of disconnectors and earthing switches IEC standard (IEC 62271-102).



FAQ

• Why do some customers want visible gap?

In some countries or for some customers, it is mandatory to have visible gap on earthing switch. This option is available on Premset.

• Why is visible gap less reliable?

There is a risk of bad interpretation of position of internal contacts due to the large variety of switchgear designs.