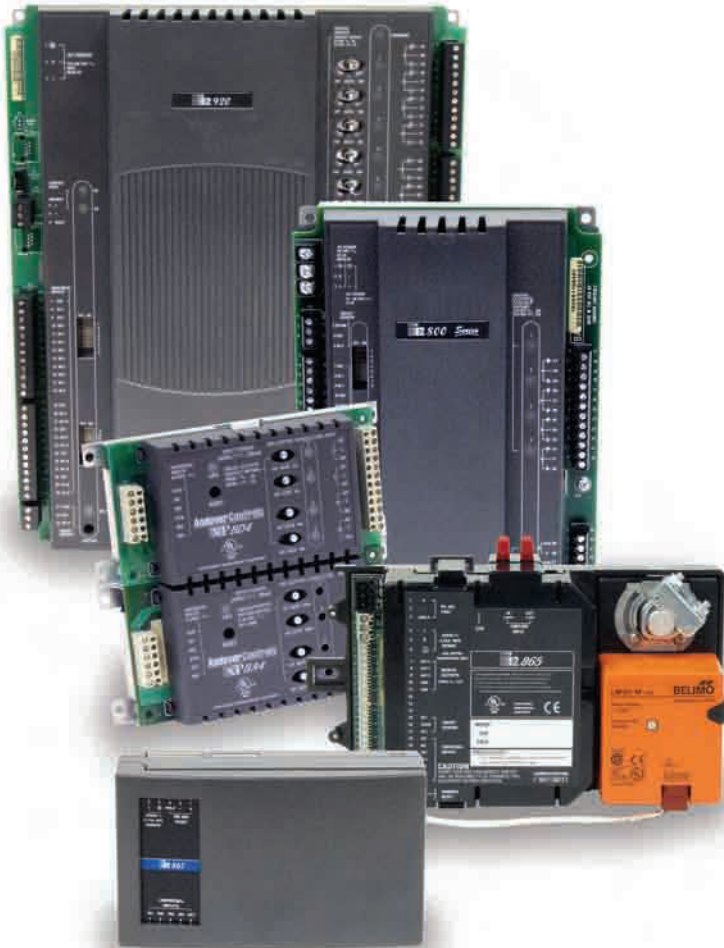


# Andover Continuum™ Infinet II

## Family of Controllers

TAC® continues to provide powerful, state-of-the-art controllers to keep up with tomorrow's fast-paced world. The Andover Continuum Infinet II (i2) family of controllers are ready to meet your most challenging control applications.



# Andover Continuum Infinet II Family of Controllers Features



Andover Continuum™ i2 controllers come packed with exciting new features to make your control projects easier. For starters, because they operate on the familiar Andover Continuum Infinet™ peer-to-peer RS-485 network, i2 controllers are compatible with your existing Andover Continuum and Infinity systems and can replace their predecessors with minimal effort.

Furthermore, programs from your existing Andover Continuum controllers can be loaded into the new i2 controllers with minimal programming changes required. You'll not only gain more memory to fulfill your application needs, but the i2's 32-bit processor provides faster scan times, with plenty of additional memory available for data logging of your critical point data.



## PRODUCT AT A GLANCE

- Andover Continuum Family of Andover Plain English™ Programmable, Compact Controllers for Your Most Challenging Control Applications
- Non-Volatile Flash Memory Provides Utmost Reliability – Stores Both Application Program and Operating System
- Flash Memory Allows Easy On-Line Software Updates
- Battery Back-up Provides Security of All Runtime Data
- Compatible with Both Andover Continuum and Infinity Systems
- 32-bit Processor Provides Fast Scan Times
- Modular, Sleek Design Simplifies Installation and Routine Maintenance
- View and Modify Information with Optional Andover Smart Sensor Display
- LED Indicators for Easy Troubleshooting

### Increased Reliability with Flash Memory

All i2 controllers feature Flash memory, providing the utmost in reliability. The i2's nonvolatile Flash memory stores your application programs and operating system, so that in the event of a power loss, your application will be restored when power is returned. In addition, the Flash memory allows for easy upgrades of your operating system via software downloads, eliminating the need to swap out proms. All i2 controllers include an on-board battery to safeguard your runtime data — protecting all point data and log data from being lost if power is removed.

### Easy Installation

The i2's sleek new open-class design provides easy access to the terminal points and eliminates the need to remove any covers. Inputs are on the left and outputs on the right for easy wiring and troubleshooting. The snap-on cover provides quick access for battery or fuse replacement, when necessary and exposed mounting holes on all i2 controllers allow you to easily mount them in any enclosure.

### Smart Sensor Interface

Most i2 controllers come standard with an additional input to provide direct connection to Andover Continuum Smart Sensor, Sensor Plus, or any standard room temperature sensor.

# Andover Continuum Infinet II Family of Controllers System Controllers

## i2 920



No Air Handling Unit is too big for the i2920 System Controller. The largest of the stand-alone controllers with 512K of memory. Built-in Real Time Clock plus support for additional I/O for larger applications.

Specifications	i2920
UI (0-10 Volts) – 12 bit	16
Smart Sensor/Room Sensor Input	1
DO – Form C Relay; 3A, 24 VAC	8
AO (0-10V, 0-20mA) – 8 bit	8
Expansion I/O Port	Yes
Local Service Port	Yes
Real-Time Clock	Yes
Flash Memory Size (Application)	512k
Program/Application Size	~420k
4-Line, 16-Character Display	Optional

## i2 800 Series



The i2800 Series is perfect for the small Air Handling Unit/Roof Top controller. The i2800 and i2804 feature a built-in 24 VAC and 12-24 VDC auto sensing power supply.

Specifications	i2800	i2804
UI (0-5 Volts) – 10 bit	8	8
Smart Sensor/Room Sensor Input	1	1
DO – Form C Relay; 3A, 24 VAC	8	4
AO (0-10 Volts) – 8 bit	-	4
Expansion I/O Port	-	-
Local Service Port	Yes	Yes
Flash Memory Size (Application)	512k	128k
Program/Application Size	~63k	~63k

# Andover Continuum Infinet II Family of Controllers System Controllers (continued)

## i2 810 Series



The i2810 and i2814 provide the same power as the i2800 series, but also include wider-range universal inputs, additional memory, removable terminal blocks, HOA switches, and expansion I/O capability.

Specifications	i2810	i2814
UI (0-10 Volts) – 10 bit	8	8
Smart Sensor/Room Sensor Input	1	1
DO – Form C Relay; 3A, 24 VAC	8	4
AO (0-10 Volts, 0-20mA) – 8 bit	–	4
Expansion I/O Port	Yes	Yes
Local Service Port	Yes	Yes
Real Time Clock	Yes	Yes
Flash Memory Size (Application)	256k	256k
Program/Application Size	~190k	~190k

## i2 600 Series



The i2600 Series is ideal for small or large groups of inputs that require monitoring in a concentrated area. Equipped with a built-in 24 VAC and 12-24 VDC auto sensing power supply, the unit allows the Universal Inputs to be configured as a Supervised Input for monitoring open wires or short circuits.

Specifications	i2608	i2624
UI (0-5 Volts) – 10 bit	8	24
Smart Sensor/Room Sensor Input	–	–
Expansion I/O Port	–	–
Local Service Port	Yes	Yes
Flash Memory Size Application	128k	128k
Program/Application Size	~63k	~63k

Notes: Requires Continuum V1.5 or greater; no SX 8000 support

# Andover Continuum Infinet II

## Family of Controllers

### Terminal Controllers

#### i2 885 Series



The i2885 is a cost-effective, reduced point-count VAV controller with a built-in actuator. It includes the same CPU used on all i2 controllers, plus Flash memory provides storage of both the operating system and the application program.

Specifications	i2885
UI (0-5 Volts) – 10 bit	2
Smart Sensor/Room Sensor Input	–
Airflow Sensor (0-1")	1
Damper Actuator	1
DO – Form A Triac; 0.5A, 24 VAC	2
Expansion I/O Port	–
Local Service Port	Yes
Flash Memory Size (Application & OS)	512k
Program/Application Size	~20k

Notes:  
 No on-board battery  
 Requires Andover Continuum v1.5 or greater; No SX 8000 support  
 No supervised inputs

#### i2 887/887-L



The i2887 is a unique, low-cost, general purpose terminal controller designed for Fan Coil and Heat Pump applications. The standard i2887 model uses 24 VAC input power; the i2887-L version is designed to use incoming line voltage at 120/240 VAC.

\* Closed class model shown

Specifications	i2885
UI (0-5 Volts) – 10 bit	3
Smart Sensor/Room Sensor Input	1
DO – Form A Triac; 0.3A, 24 VAC	4
DO – Form A Relay; 3A, 277 VAC	1
Expansion I/O Port	–
Local Service Port	Yes
Flash Memory Size (Application & OS)	512k
Program/Application Size	~20k

Notes:  
 No on-board battery  
 Requires Andover Continuum v1.5 or greater; No SX 8000 support  
 No supervised inputs

Models	Power
i2 887	24 VAC
i2 887-L-115	115 VAC
i2 887-L-230	230 VAC
i2 887-L-XXX-C	Closed Class

# Andover Continuum Infinet II

## Family of Controllers

### Terminal Controllers (continued)

#### i2 865/866



The i2865 and i2866 are full-featured VAV controllers that come equipped with a built-in actuator. Compared to the i2885, the i2865 series provides more I/O to handle your full range of VAV applications.

Specifications	i2865	i2866
UI (0-5 Volts) – 10 bit	4	4
Smart Sensor/Room Sensor Input	1	1
Airflow Sensor/(0-2")	1	1
Damper Actuator	1	1
DO – Form A Triac; 0.5A, 24 VAC	3	3
AO (0-10 Volts) – 8 bit	–	2
Expansion I/O Port	–	–
Local Service Port	Yes	Yes
Flash Memory Size (Application)	128k	128k
Program/Application Size	~63k	~63k

#### i2 867



The i2867 is a compact terminal controller that provides DDC control of package units, heat pumps, unit ventilators, and other terminal unit applications. Compared to the i2887, the i2867 provides more I/O for greater flexibility.

Specifications	i2867
UI (0-5 Volts) – 10 bit	4
Smart Sensor/Room Sensor Input	1
DO – Form A Triac; 0.5A, 24 VAC	5
AO –(0-10 Volts) – 8 bit	2
Expansion I/O Port	–
Local Service Port	Yes
Flash Memory Size (Application & OS)	128k
Program/Application Size	~63k

# Andover Continuum Infinet II Family of Controllers Terminal Controllers (continued)

## i2 850



The i2850 series is a perfect fit for your VAV applications where external actuators are used. If additional I/O points are required, the built-in I/O Expansion Port provides the link and the module power for these points. The i2853 is designed for dual-duct VAV applications that require two airflow sensors.

Specifications	i2850	i2851	i2853
UI (0-5 Volts) – 10 bit	4	4	4
Smart Sensor/ Room Sensor Input	1	1	1
Airflow Sensor/(0-2")	1	-	2
DO – Form A Relay; 3A, 24 VAC	3	3	3
DO – Tri-State Form; 3A, 24 VAC	1	1	1
Expansion I/O Port	Yes	Yes	Yes
Local Service Port	Yes	Yes	Yes
Flash Memory Size (Application)	128k	128k	128k
Program/Application Size	-63k	-63k	-63k

## xP Expansion I/O



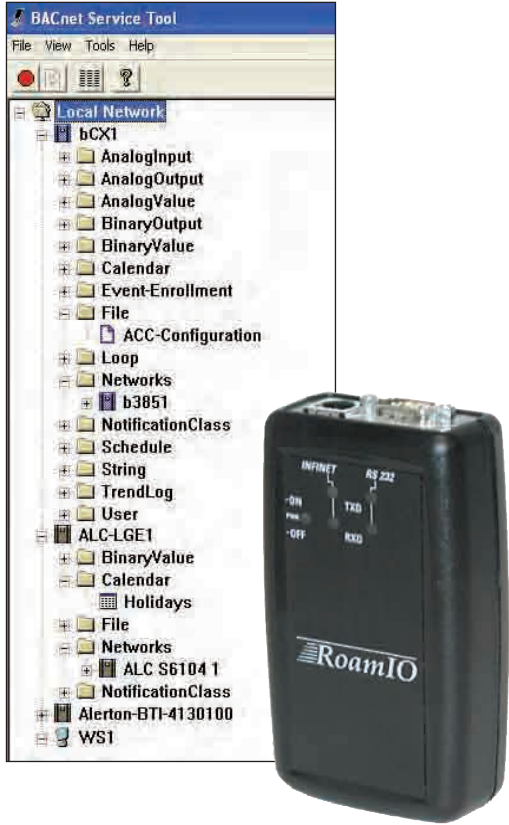
When additional I/O points are required, the I/O Expansion Family of attachable modules are available to solve all your application needs. The i2810, i2850, and i2920 series controllers support up to two I/O Expansion modules and/or a remote mounted display.

Exp. Modules	Provides Additional
xPD18	8 Digital Inputs
xPU14	4 Universal Inputs
xPAO2	2 Analog Outputs with overrides
xPAO4	4 Analog Outputs with overrides
xPDO2	2 Digital Outputs with overrides
xPDO4	4 Digital Outputs with overrides
xP Display	Local Display Module (4-Line, 16-Character)

# Andover Continuum Infinet II Family of Controllers Terminal Controllers (continued)

## RoamIO<sub>2</sub> Service Tool

The RoamIO<sub>2</sub> Service Tool, a portable device that connects to your Pocket PC or laptop computer, provides easy access to point information on any Andover Continuum Infinet controller on the network. Simply connect the RoamIO<sub>2</sub> to the Service port on an Andover Continuum Infinet controller and to your Pocket PC. View and edit point data or update the Controller flash Operating System (i2 Controllers). Easily traverse the network to any controller on the network to view the current values, modify the log configuration, add descriptions, or change the state of the point. A simple, easy-to-use, and extremely portable tool that is a must-have for your tool box.



All brand names, trademarks and registered trademarks are the property of their respective owners. Information contained within this document is subject to change without notice.

On October 1st, 2009, TAC became the Buildings Business of its parent company Schneider Electric. This document reflects the visual identity of Schneider Electric, however there remains references to TAC as a corporate brand in the body copy. As each document is updated, the body copy will be changed to reflect appropriate corporate brand changes.

**Schneider Electric** One High Street, North Andover, MA 01845 USA Telephone: +1 978 975 9600 Fax: +1 978 975 9674 www.schneider-electric.com/buildings