

FBX Express Ring Main Unit

Gas insulated switchgear 12 kV 21kA/3sec
suitable for transformer protection from 200 kVA
up to 2500 kVA.

FBX Express covers a wide range of applications for
MV secondary distribution up to 12 kV. It is an ideal
solution for building applications such as: offices,
hotels, shops...



Advantages of Partner Express

Schneider Electric Partner Express, is our Medium Voltage Business accelerator for the building market. It gives you the tools and support to deliver MV buildings projects faster and win more business.

Easy selection

- A simple & dedicated online selection for FBX India with 29 standard references
- Standard drawings available on web

Quick configuration and quotes

- Configure/Select equipment online with Ecoreal Express.
- Fast-track your customers' projects by submitting accurate quotes in record time.

Rapid ordering

- Use our dedicated online ordering tool or contact your local reseller

Fast delivery

- Ensure fast delivery with 6 weeks lead time.

Get more advantages from FBX Express

- Secured 6 weeks delivery time.
- 29 standard references for building applications.
- Standard set of drawings available in the web.
- Simple and dedicated online selection tool.

Enhance safety and efficiency of your network with a recognized switchgear

- With a strong field proven experience worldwide FBX offers best-in class safety and efficiency to your networks.
- As part of it, the new designed IP54 enclosure brings extended lifetime for outdoor installations.
- Schneider Electric applies drastic quality controls along its manufacturing process, permitting to certify its products according to latest quality certifications.

Save Time, FBX new design makes installation and commissioning easier

- Quick and easy connection thanks to great accessibility to cable compartment.
- Facilitated low voltage customization with adapted compartment to mount auxiliary relays, transformer cards, master trip and FRTU.
- Its small footprint allows space saving and fast installation.

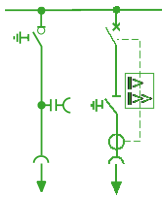
Common specifications for all references

All switchboards referenced below:

- 18 months warranty

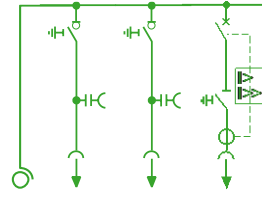
- Comply to IEC – 62271-100 standard and are IAC – AFL tested.
- Delivered with standard manometer and 1 operating handle

Technical description of the functional units



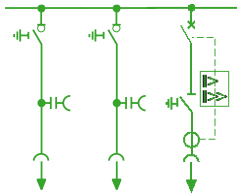
CT2: 1 Load Break Switch as incomer & 1 Breaker as outgoing.

- 2 function RMU
- Suitable cable sizes for all feeders: 1RX3CX185 sq. mm-400 sq. mm
- 2 sets of cable boots



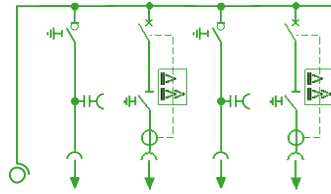
M+CCT2: 2 Load Break Switches & 1 Breaker with metering module for BESCOM (full DAS), TANGEDCO & MSEDCL RAPDRP specific applications.

- 3 function RMU with metering module.
- Suitable cable sizes for all feeders: 1RX3CX185 sq. mm-400 sq. mm
- 3 sets of cable boots



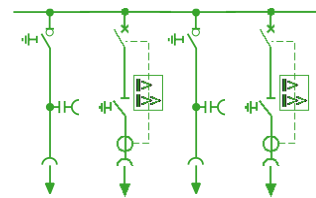
CCT2: 1 Load Break Switch as incoming & 1 Load Break switch & 1 Breaker as outgoing.

- 3 functions RMU with 1 no. FPI for SC & EF indication.
- Suitable cable sizes for all feeders: 1RX3CX185 sq. mm-400 sq. mm
- 3 sets of cable boots



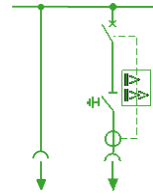
M+CT2CT2: 2 Load Break Switches & 2 Breakers with metering module for BESCOM (full DAS), TANGEDCO & MSEDCL R-APDRP specific applications.

- 3 function RMU with metering module.
- Suitable cable sizes for all feeders: 1RX3CX185 sq. mm-400 sq. mm
- 4 sets of cable boots



CT2CT2: 1 Load Break Switch as incomer & 1 load break switch & 2 Breakers as outgoing.

- 4 function RMU with 1 no. FPI for SC & EF indication.
- Suitable cable sizes for all feeders: 1RX3CX185 sq. mm-400 sq. mm
- 4 sets of cable boots



RT2: 1 Riser as incomer & 1 Breaker as outgoing.

- 2 function RMU
- Suitable cable sizes for all feeders: 1RX3CX185 sq. mm-400 sq. mm
- 2 sets of cable boots

List of references

Installation	Functions	Operation	Extensibility	CT Rating	Transformer rating	References
Outdoor	CCT2	Manual	Non-Extensible	30-60/1A	200kVA-1000kVA	FBX3NC0312A21WOC10
Outdoor	CCT2	Manual	Non-Extensible	75-150/1A	1000kVA-2500kVA	FBX3NC0312A21WOC20
Outdoor	CCT2	Manual	Double extensible	30-60/1A	200kVA-1000kVA	FBX3DC0312A21WOC10
Outdoor	CCT2	Manual	Right extensible	30-60/1A	200kVA-1000kVA	FBX3RC0312A21WOC10
Outdoor	CCT2	C-manual T-motorized	Right extensible	30-60/1A	200kVA-1000kVA	FBX3RC0312A21WOC20
Outdoor	CT2CT2	Manual	Non-Extensible	30-60/1A	200kVA-1000kVA	FBX4NC0412A21WOC10
Outdoor	CT2CT2	Manual	Non-Extensible	75-150/1A	1000kVA-2500kVA	FBX4NC0412A21WOC20
Outdoor	CT2CT2	Manual	Double extensible	30-60/1A	200kVA-1000kVA	FBX4DC0412A21WOC10
#Outdoor	M+CCT2*	Motorized	Right extensible	200-400/1A	250kVA-2500kVA	FBX4RC0612A21WOC10
#Outdoor	M+CCT2**	Motorized	Right extensible	50-100/1A	800kVA-1600kVA	FBX4RC0812A21WCC10
#Outdoor	M+CT2CT2*	Motorized	Right extensible	200-400/1A	250kVA-2500kVA	FBX5RC0712A21WCC30
#Outdoor	M+CT2CT2**	Motorized	Right extensible	50-100/1A	800kVA-1600kVA	FBX5RC0912A21WCC40
Outdoor	CT2	Manual	Right extensible	30-60/1A	200kVA-1000kVA	FBX2RC0112A21WCC30
Outdoor	RT2	Manual	Double extensible	30-60/1A	200kVA-1000kVA	FBX2DC0512A21WOC10
Indoor	CCT2***	Manual	Non-Extensible	30-60/1A	200kVA-1000kVA	FBX2DC0512A21WOC10
Indoor	RT2***	Manual	Non-Extensible	30-60/1A	200kVA-1000kVA	FBX2NC0512A21WCC2I

* BESCOM specific ** MSEDCL R-APDRP specific *** Specific for PSS application. # BESCOM & MSEDCL R-APDRP specific orders are supplied with old outdoor FBX design.

Schneider Electric Infrastructure Ltd.
DLF Building No. 10, Tower C, DLF Cyber City, Phase-II,
Gurgaon, Haryana 122002
Tel: 0124 3940 400
www.schneider-electric.co.in/en/

Life Is On

Schneider
Electric

List of references

Installation	Functions	Operation	Extensibility	CT Rating	Transformer rating	References
Outdoor	RT2	Motorized	Double extensible	25-50/1A	150kVA-800kVA	FBX2DC0512A02WOC8O
Outdoor	RT2	Manual	Non-extensible	50-100-150/1A	200kVA-2500kVA	FBX2NC0512A02WOC6O
Indoor	RT2***	Manual	Non- extensible	50-100-150/1A	200kVA-2500kVA	FBX2NC0512A21WOC6I
Indoor	CCT2***	Manual	Non- extensible	50-100-150/1A	200kVA-2500kVA	FBX3NC0312A21WOC6I
Outdoor	CCT2	Motorized	Double extensible	25-50/1A	150kVA-800kVA	FBX3DC0312A02WOC8O
Outdoor	CCT2	Manual	Non-extensible	50-100-150/1A	200kVA-2500kVA	FBX3NC0312A02WOC6O
Outdoor	CT2CT2	Motorized	Double extensible	25-50/1A	150kVA-800kVA	FBX4DC0412A02WOC8O
#Outdoor	M+CCT2*	Motorized	Right extensible	50-100-150/1A	200kVA-2500kVA	FBX4RC0612A01WCC5O
#Outdoor	M+CCT2**	Motorized	Right extensible	50-100/1A	200kVA-1600kVA	FBX4RC0612A02WCC7O
#Outdoor	M+CT2CT2*	Motorized	Right extensible	50-100-150/1A	200kVA-2500kVA	FBX5RC0712A01WCC5O
#Outdoor	M+CT2CT2**	Motorized	Right extensible	50-100/1A	200kVA-1600kVA	FBX5RC0712A02WCC7O
Outdoor	CCCT2	Manual	Right extensible	50-100-150/1A	200kVA-2500kVA	FBX4RC1012A03WOC6O
Outdoor	CCT2T2T2	Manual	Non- extensible	50-100-150/1A	200kVA-2500kVA	FBX5NC0212A03WOC6O

* BESCOM specific ** TANGEDCO specific *** Specific for PSS application. # BESCOM & TANGEDCO R-APRDP specific orders are supplied with old outdoor FBX design.

Schneider Electric Infrastructure Ltd.
DLF Building No. 10, Tower C, DLF Cyber City, Phase-II,
Gurgaon, Haryana 122002
Tel: 0124 3940 400
www.schneider-electric.co.in/en/

Life Is On

Schneider
Electric