

I/A Series

Continuum CyberStation™ Security Workstation



I/A Series

Continuum CyberStation Security Workstation

Features



PRODUCT AT A GLANCE

- Advanced alarm management
- Manage Security and Card Access
- Personnel management and import utilities
- Integrated badging
- Add Digital Video Surveillance to any graphic display
- Crisp Dynamic Graphic Displays for quick troubleshooting
- Full graphical scheduling
- Web-Based Interface for easy access anywhere
- Native BACnet Operator Workstation (B-OWS), per ASHRAE BACnet Standard
- Functions as BBMD—BACnet Broadcast Management Device

The Continuum CyberStation Security Workstation is the industry leading security command center. Flexible enough to meet even the most demanding user requirements, CyberStation provides unmatched graphics and information management tools. CyberStation also integrates seamlessly with digital video recorders from Integral Technologies®, allowing live video feeds from any camera to be placed in the secured environment.

CyberStation is built upon a solid foundation, designed and implemented in strict accordance with ASHRAE BACnet™ standard to facilitate effortless interoperability with third party BACnet systems. CyberStation runs on the Microsoft® Windows® XP platform, and employs either a Microsoft MSDE or SQL database. Configurations range from a single PC to multiple workstations with a central file server.

Increased Accessibility with web.Client

With the optional web.Client™ package, your BACnet system can be accessed anywhere on your network through a standard browser interface. View graphic displays, modify setpoints, change schedules, view reports, respond to alarms, and manage your building without being pinned down to a dedicated workstation. web.Client functionality can be added to even the smallest existing system with ease, using the same graphic displays, user profiles, and system database as the standard CyberStation.

Time-Saving Configuration Tools

CyberStation will auto-discover all the BACnet Devices on the BACnet network along with their objects and properties. This makes BACnet integration a breeze! Gone is the need to individually map points into the database. Let CyberStation do the work for you with a simple click of the “Find BACnet Devices” and “Save to Database” buttons.

I/A Series Continuum CyberStation Security Workstation Features (continued)

Disaster Recovery

BACnet has a very powerful feature called “Backup & Restore” which permits the backing up and restoring of controller memory. If a BACnet Device supports this feature CyberStation has the tools to provide this advanced management service. CyberStation not only allows you to backup a BACnet Device within it’s SQL database, but also allows you to create an archive of backups on your hard drive. When it comes time to restore a controller, simply issue the restore command and select the backup file from the archive or SQL database.

Networking Support

If you have BACnet Devices spread across multiple IP networks or even the Internet, enable CyberStation’s BBMD (BACnet Broadcast Management Device) and configure CyberStation to communicate to those remote devices.

Consolidated, Flexible Alarm System

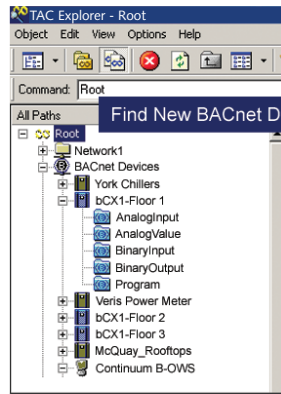
All alarms are displayed in an active alarm view, allowing for a quick yet complete assessment of each alarm condition. Take advantage of CyberStation’s powerful alarm engine to define precise Alarm and Event Notifications, including which workstation the alarm type is delivered to, escalation path, alarm actions including email and pager, and acknowledgement rules. All alarms, including acknowledgement details and text, are logged in the central database. Alarm reports are easily generated based on time and date, priority, alarm type, or any other criteria.

Graphical Reports

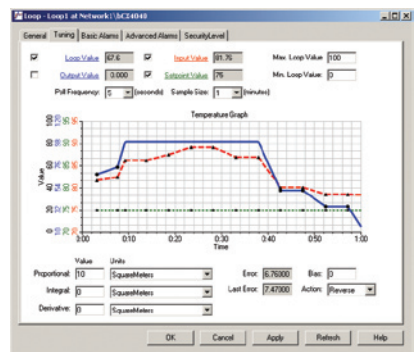
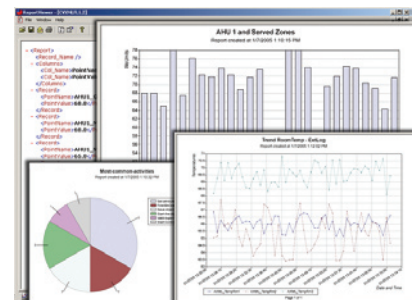
The graphics reporting package in CyberStation/web.Client presents data from extended trend, alarm, access event, and activity logs as well as instantaneous data in a graphical format. Choose between SVG scalable bar graphs, line graphs, and pie charts, and text formats using html and xml. Optionally, reports may be generated in Adobe Acrobat format for distribution. Regardless of format, all reports may be emailed either manually or by a schedule (using MS Scheduler included in OS.) The power of these report lies within some of the statistical reports — display the top ten alarms, the most active personnel!

High Performance BACnet

CyberStation has been optimized to issue BACnet commands and retrieve BACnet information at the highest speeds. Using the change of value and read property multiple services within the BACnet standard, CyberStation can display graphics, reports and other data at the optimal refresh rates.



Date/Time	Name	Value	To State	Alarm Type
8/25/2005 7:58:34 PM	Control 1	100	Return To Normal	Control Trip (12.000)
8/25/2005 2:13:50 PM	Reset 2/2004	On	Alarm	Reset 2/2004 (4.000)
8/25/2005 2:08:18 PM	Network/Verify/Value Entrance	Locked	Return To Normal	Main Entrance - CLOSED
8/25/2005 2:00:26 PM	Network/Verify/Value Entrance	Locked	Return To Normal	Afternoon Entrance - Closed
8/25/2005 2:00:30 PM	DM 41	23.7	Alarm	Low Humidity Alarm
8/25/2005 2:00:35 PM	DM 11	23.9	Alarm	Low Humidity Alarm
8/25/2005 2:03:13 PM	DM 11	23.7	Alarm	Low Humidity Alarm
8/25/2005 1:58:10 PM	Reset 1/2004	100	Return To Normal	Reset 1/2004 (4.000)
8/25/2005 12:41:24 PM	Reset 1	On	Alarm	Control Trip (12.000)
8/25/2005 12:41:28 PM	Reset 4/1 001	On	Alarm	Reset 4/1 Alarm - 001
8/25/2005 12:41:28 PM	Reset 4/1 111	On	Alarm	Reset 4/1 Alarm - 111
8/25/2005 12:12:30 PM	Network/Verify/Office	Locked	Return To Normal	Office
8/25/2005 12:00:10 PM	Network/Verify/Value Entrance	Locked	Return To Normal	Main Entrance - CLOSED
8/25/2005 12:00:20 PM	Network/Verify/Value Entrance	Locked	Return To Normal	Afternoon Entrance - Closed
8/25/2005 11:52:22 AM	Door 1 26	On	Alarm	DOOR ALARM



I/A Series

Continuum CyberStation Security Workstation

Specifications

Specifications

Electrical

Power

24 VAC, 50/60 Hz
12-28 VDC auto-sensing

Power Consumption

90 VA (AC)
50 W (DC)

Real Time Clock

Battery-backed by an internal battery

CyberStation

Minimum/Recommended Hardware Requirements, CyberStation Workstation and File Server

1.6 GHz Pentium® IV processor/2.4 GHz Pentium IV processor, 512 MB RAM/1024 MB RAM, 20 GB/40 GB hard drive, CD ROM drive, 10/100 Ethernet Network Interface card, parallel or USB port

Operating Systems, CyberStation Workstation

Microsoft Windows XP

Operating System, File Server (for multi-user systems)

Microsoft Windows Server 2003, with Microsoft SQL Server 2000 or Microsoft SQL Server 2005 database software

BACnet Device Profile

B-OWS, BACnet Operator Workstation

web.client option

Minimum/Recommended Hardware, Application Server

1.6 GHz Pentium IV processor/2.4 GHz Pentium IV processor, 512 MB RAM plus 5 MB per connection/1024 MB RAM plus 5 MB per connection, 20 GB hard drive (NTFS Partition)/40 GB hard drive (NTFS Partition), CD ROM drive, 10/100 MB Ethernet Network Interface card, Parallel or USB port

Client Browser

PC running Microsoft Internet Explorer 6.0 or higher, Java-enabled, 20 MB minimum hard drive space. Microsoft Windows NT®/2000/XP, Microsoft Windows Server 2003

Operating System, Application Server

Microsoft Windows Server 2003 with Microsoft Internet Information Services (IIS) 6.0 or higher with Active Server Pages (ASP) enabled, Microsoft Windows XP Professional with Microsoft Internet Information Services (IIS) 5.0 or higher with Active Server Pages (ASP) enabled

Communications

Network Connectivity

Ethernet TCP/IP

BACnet Connectivity

BACnet/IP, per ASHRAE BACnet standard

BACnet Device Profile

B-OWS, BACnet Operator Workstation

Maximum Number of Ethernet Devices, including CyberStations

4 million

User Accounts

User Security

User accounts encrypted. Database may be partitioned such that users have access to only certain collections of objects in the system. Minimum password length and password expiration may be enforced.

Auto-Logoff feature

User logoff after 0-255 minutes of inactivity (individually set per user)

Maximum User Accounts

4 million

Software Specifications

Maximum Number of Points

4 million per point type

Maximum Number of Personnel

4 million

Maximum Alarm and Event Log History

Limited only by disk space

I/A Series Continuum CyberStation Security Workstation Architecture

System Overview

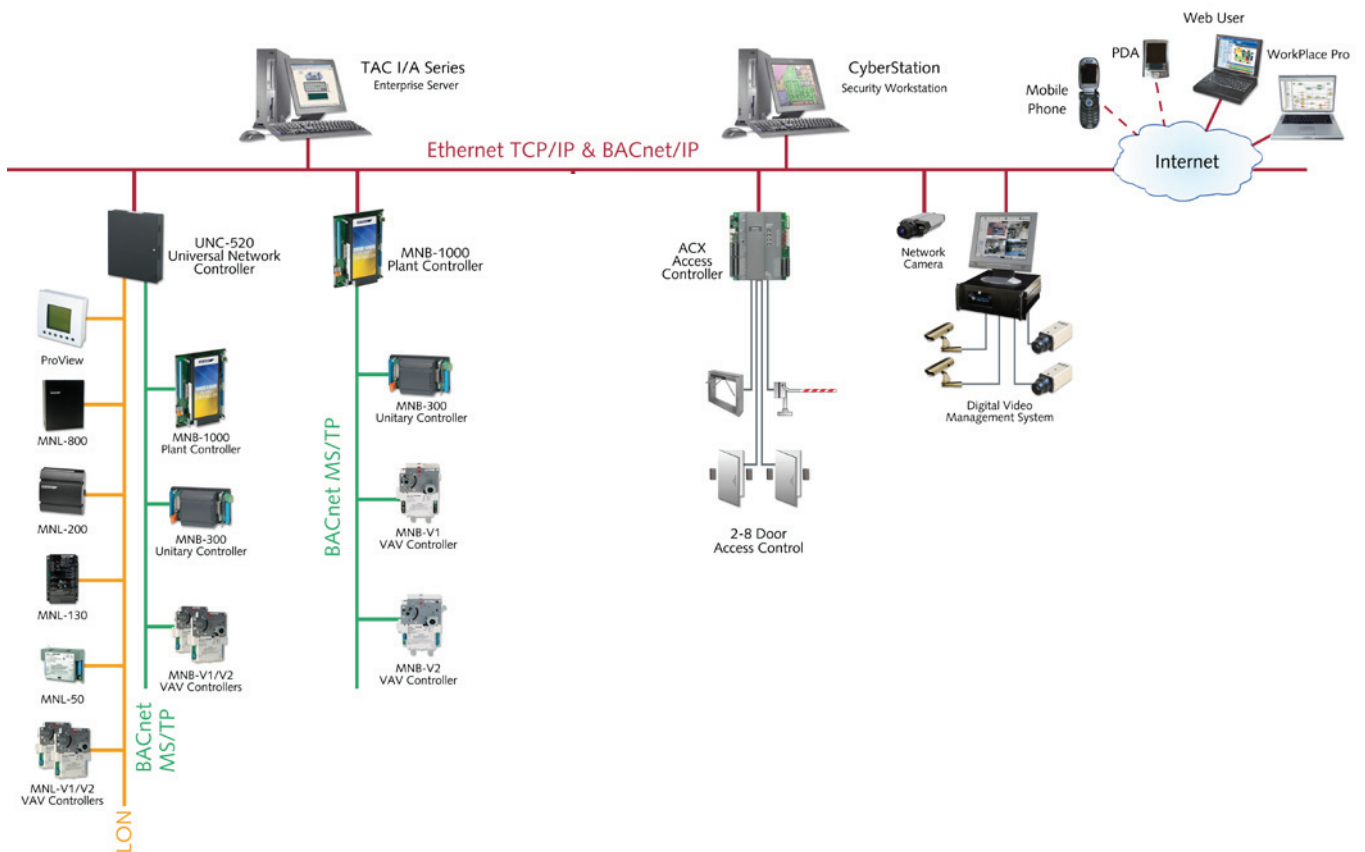
The Continuum Security Management System has four primary components:

- ACX Series Access Controller
- CyberStation software (security workstation)
- web.Client software (web server to make your system accessible over a web-browser)
- Integral Digital Video Management System (DVMS)

These can be used for security only installations or added on to your existing I/A Series sites. Please review the architecture below and parts list for reference.

Architecture

I/A Series and Continuum Security Architecture



All brand names, trademarks and registered trademarks are the property of their respective owners. Information contained within this document is subject to change without notice.

Schneider Electric One High Street, North Andover, MA 01845 USA Telephone: +1 978 975 9600 Fax: +1 978 975 9674 www.schneider-electric.com/buildings

F-27449-4

August 2011 99